

*Limited Seating - Get your tickets today!*

Exceptional People, Exceptional Care

**RUBY VALLEY HEALTHCARE FOUNDATION**

**FUNDRAISER FOR THE TWIN BRIDGES CLINIC**  
 Saturday, August 26, 2023  
 Round Barn, Hamilton Ranch, Twin Bridges, MT  
 Live and Silent Auctions  
 Doors open at 5:00 PM

**TICKET PRICING:**  
 \$50/PERSON • \$75/COUPLE  
 \$300/TABLE OF 6: includes a bottle of wine & 25 chances to win the door prize

Purchase tickets online at [rubyvalleyhealthcarefoundation.org](http://rubyvalleyhealthcarefoundation.org)

Photo Source: facebook.com/theroundbarnattwinbridges | ©Arron Booth Photography

**Amateur Horseshoe Tournament**  
 Saturday, August 12

Registration - 8:00 am  
 Tournament begins - 9:00 am

Join us at the Madison County Horseshoe Tournament on Saturday, August 12, 2023. Horseshoe pits are located in the front of the Madison County Fairgrounds, near the bridge. There will be a \$10 entry fee. The first three (3) places in Class A, B, and C in the single and double divisions will be awarded prizes.

If you have questions contact Bruce Pericich at 406-596-1058. Gather up your lucky horseshoes and we'll see you at the Madison County Fair on August 12!!

**LOST CABIN BAR**

109 S. MAIN ST.  
 TWIN BRIDGES, MT  
 406-684-5482  
 COLDEST BEER IN TOWN

**Tobacco Root Mountains Care Center**

Phone: (406) 842-5600  
 Fax: (406) 842-5419

326 Madison  
 P.O. Box 308  
 Sheridan, MT 59749

**THE SHACK**  
 TWIN BRIDGES, MONTANA

Pizza...Burritos...Beer...Sandwiches...Burgers...Salad Bar...16 Flavors of Ice Cream

301 N. Main 406-684-5050

HOURS:  
 Tuesdays through Sunday ~ 11 a.m. - 8 p.m.  
 Call 406-684-5050 for Daily Specials

**P's Clothes Closet & More**

Located above the Twin Bridges Library

OPEN HOURS

MONDAY	10AM - 2PM
WEDNESDAY	9AM - 2PM
FRIDAY	10AM - 2PM
SATURDAY	10AM - 2PM

ALL items are FREE to the community! Mens, womens, and childrens clothing, toys, household items, sheets, towels, etc. Donations are greatly appreciated and can be dropped off during open hours or by appointment by calling P @ (406) 600-2983

**AUGUST 2023 - 1ST ISSUE**

**RUBY VALLEY NUGGET**

**3 RIVERS COMMUNICATIONS**

PHONE INTERNET

406-467-2535  
 800-796-4567

[3rivers.net](http://3rivers.net)

**MONTANA LAND & LUXURY**

610 N Montana Street - Dillon, MT 59725  
 Office: 406-683-3635  
 Cell: 406-660-2440

Jessie Brooks  
 Licensed Montana Realtor

MLS

**MADISON COUNTY HEATING & COOLING**

EST. 2019

Residential & Commercial Heating & Air Conditioning

406-221-6677

**MADISON COUNTY FAIR SCHEDULE**  
 OUR WEST IS THE BEST  
 AUGUST 9th - 13th, 2023 - TWIN BRIDGES, MT

Saturday, August 5: 4H/FFA Horse Show

Sunday, August 6: 9:00 am--Madison County Youth Rodeo

Wednesday, August 9: 7:00 pm--Madison County Barrel Racing

Thursday, August 10: Birds N Beasts, Inc., The Birdman "World Class Bird Shows" (TBA--Shows throughout the Day)  
 12:00 pm--Bingo (Pavilion)  
 4:30 pm--Ruby Valley FFA Tractor Pull  
 7:00 pm--Madison County Ranch Rodeo

Friday, August 11: Birds N Beasts, Inc., The Birdman "World Class Bird Shows" (TBA--Shows throughout the Day)  
 Adventure Zone (by the river)  
 Double Vision Magic Shows (Strolling Acts and Show)  
 TG Face Painting (Pavilion)  
 12:30/3:30/6:30 pm--Open Mic Music (Open Class Building)  
 8:00 am--NRA Rodeo Slack  
 12:00 pm--Bingo (Pavilion)  
 2:00 pm--Stick Horse Rodeo/bouncy horse races (Friends Arena)  
 4:00 pm--Hog Scramble (Friends Arena)  
 6:45 pm--Ramblin' Rose Drill Team Performance  
 7:00 pm--NRA Rodeo  
 7:00 pm--Mens Stock Saddle Bronc Riding  
 7:00 pm--Mens Rookie Saddle Bronc Riding  
 9:00 pm--Benny Reynolds Wild Cow Milking  
 9:00 pm--Plowed Under Band (Beer Garden Stage)

Saturday, August 12: Birds N Beasts, Inc., The Birdman "World Class Bird Shows" (TBA--Shows throughout the Day)  
 Adventure Zone (by the river)  
 Double Vision Magic Shows (Strolling Acts and Show)  
 TG Face Painting (Pavilion)  
 12:30/3:30/6:30 pm--Open Mic Musi (Open Class Building)  
 8:00 am--Horseshoe Tournament  
 10:00 am-- Madison/Jefferson 4H/FFA Livestock Sale  
 12:00 pm--Bingo  
 6:45 pm--Ramblin' Rose Drill Team Performance  
 7:00 pm-- "All Girls Stock Saddle Bronc Riding"  
 7:00 pm--NRA Rodeo  
 7:00 pm--Rookie Bareback Riding  
 9:00 pm--Benny Reynolds Wild Cow Milking  
 9:00 pm--Plowed Under Band (Beer Garden Stage)

Sunday, August 13: 6:30 am--Twin Bridges Fire Department Pancake Breakfast  
 10:30 am--Parade on Main Street  
 12:00 pm--Cowboy Church  
 11:00 pm--Fair Closes (See you in 2024)

Please join us for open class shows, vendors, 4H/FFA shows, quilt show, beer gardens, and much more.

**DUSTING DAISY HOUSEKEEPING**

My Services Include  
 Cleaning Bathrooms  
 Cleaning Kitchens  
 Dusting & Vacuuming

Mia Babcock  
 Home  
 406-287-3075  
 Cell  
 406-451-6886

\$35.00 per hour

Ruby Valley Campground & Convenience Store  
 In Alder Is Now Open

- Propane Services
- Hot Coffee
- Basic Essentials
- Fishing Equipment
- Campsites Available

8 AM - 7 PM - All Week  
 406-842-5677

**BERKSHIRE HATHAWAY**  
 HomeServices  
 Montana Properties

Frank Colwell  
 Broker  
 32 years serving Montana  
 Real Estate Needs  
 406.596.1076

**HANDYMAN TICE**

Corey Tice 720-732-6506  
 PO Box 42 Cptice@yahoo.com  
 Sheridan, MT 59749 Free Estimates

Carpentry Flooring Drywall Sprinkler Svstems Automotive Repair

**TB Auto Parts**

104 N. Main ST  
 PO Box 434  
 Twin Bridges, MT 59754

Phone: 406-684-5739  
 Fax: 406-684-5377  
[tb\\_auto@yahoo.com](mailto:tb_auto@yahoo.com)

Monday - Friday  
 8 am to 5 pm  
 Saturday  
 9 am to 12 pm

**RUBY VALLEY BREW**  
 REMAIN UNTAMED

WE TIP OUR GLASS TO THE WILDER ONES

111 S. MAIN - SHERIDAN, MT - 842-5977

**PUBLISHED BY BEACON BUSINESS CENTER ~ 406-842-7488**

DESIGNED BY JOETTA WETZSTEON - CONTACT: RUBYVALLEYNUGGET@GMAIL.COM - WWW.BEACONBUSINESSCTR.COM

AUTHORIZED FEDEX & UPS SHIPPING CENTER SUPPLIES

HOME DECOR - TOYS - CRAFTS - PUZZLES - OFFICE SUPPLIES - COPY - FAX - GRAPHIC DESIGN - AND MORE...

## WATERLOO



Waterloo in 1932. From left clockwise: Cheese factory, Depot, Community Hall, Store and Post Office, Church steeple and the Egger residence.

Once a station on a Northern Pacific branch line between Whitehall and Alder, near the Jefferson River on the northern edge of the county, the Waterloo area was first settled back in 1864 by gold seekers.

Permanent settlements began to be established by farmers, miners, doctors and surveyors. Some of the first names in the area were Z.D. Foster, Wickham family, John Beall family, Pat Carney Townsend's family and the James Brook family.

James Brook saw the possibilities for the success of a woolen mill built near Spring Creek, south of town. A company was organized of stockholders and plans went into place. The mill was operated by water power from Spring Creek as the creek did not

freeze in the winter. Late in 1877 the building was constructed and machinery was ordered. It was built of granite rock from nearby hillsides. Pat Carney donated his labor and created the stonework. The stockholders decided to have a big dance to celebrate the completion of the building. During the celebration a storm came up with high winds and blew the mill's roof off. The roof was replaced and not long after the roof blew off again. This discouraged the members of the company and about 1893 Z.D. Foster sold to A.J. Daves and the mill was remodeled into a barn.

A pottery plant was created at the mouth of Mill Canyon by Sam Right. Mr. Right was injured from the roof caving in and could not continue.

Later John Beall and Pat Carney bought the plant. With improvements a good market developed and a large quantity of pottery was sent to many neighboring towns.

A soap factory was set up by Mr. Welsh and Mrs. Foster. Mr. Welsh would supply beaver fat to Mrs. Foster and it was a huge success for the area. It is believed to be the first soap factory in Montana.

Fertile farm lands flourished around Waterloo. A large variety of vegetables, including squash and potatoes, were grown and sold to markets in Butte and as far away as Helena.

Stock raising was also a successful industry. With excellent native grasses and large areas of grazing lands made the stock industry permanent for the area. Dairy, beef, and sheep farms and ranches sprang up as early as the 1870's.

There was an early post office located at Parson's Toll Bridge, which was about two miles northwest of Waterloo and was on the opposite side of the river from Silver Star. Stages passed over this bridge en route to Virginia City or Helena. The freight wagons were slower and hardly ever traveled more than fifteen miles a day. The charges to cross were \$1.00 for a wagon and team and 50 cents for a person on one horse. The original bridge washed away.

A post office didn't open in Waterloo until 1900 (James Gordon, postmaster). Apparently the Waterloo name is at least partly due to the battle over the post office location. It ended up being part of the local general store.

A mine known as the Strawn Gold Mine was historically associated with the Tidal Wave Mining District. The site was first discovered in 1921 by Julian E. Strawn. Past operations took place from 1921 to 1942. Production size when active was considered to be small. There is one known shaft that extended a maximum of 213 meters (700 feet). The ore body is described as irregularly shaped 1.52 meters (4.99 feet) in width. The ore mined is composed of gold, silver and copper with waste material consisting primarily of pyrite and siderite.

The two schools that were in Silver Star consolidated with Twin Bridges. The Harbison (Silver Star Station) District No. 42 was located about two miles east of town. It was first known as the Weingart School and later was changed to Harbison. The district was never recorded as Weingart. When the school was built, there was no bridge across the Jefferson River until about 1912. The school building was eventually moved into Waterloo, later renovated and used as a home.

Some of the early establishments in Waterloo were: A general store/post office, dance hall, depot, cheese factory, church and school. Walter Thackery, a Ruby Valley resident, was an ardent Indian artifact collector and found many in the area, but the most important of his finds was the bones of a saber tooth tiger in a cave near Waterloo. These bones were sent to the Smithsonian Institute for identification.

After he passed away, his wife Cora, presented them to the Montana School of Mines, now Montana Tech. His fine collection of arrowheads and Indian hammers was donated to the Museum in Dillon.

The wind had continued to play havoc in Waterloo. In June of 1980 it is said a tornado touched down with destructive force. It came from a southern direction and moved northeast out of town. Damage was extensive and fortunately no one was hurt. A very terrifying experience for those in the area. Ranches and farms have changed hands and most businesses gradually faded away over the years. The store and post office was probably the last business that phased out and discontinued.

Now all that can be seen are some of the original buildings that are still standing and beautiful farm and ranch lands.

Researched by Joetta Wetzsteon - Sources: 1925 writings of Chief Justice Lew. L. Callaway in an address before the Madison County Federation of Women's Clubs in Virginia City. Also Encyclopedia Britannica and a History Book called The History of Sacagawea

Waterloo in 1932. From left clockwise: Cheese factory, Depot, Community Hall, Store and Post Office, Church steeple and the Egger residence.

Waterloo Store and Post Office.

Stamp Mill at Strawn Mine, 1924; Bell Canyon near Waterloo. Now at Mining Museum; Butte, Montana.

Waterloo School dating - 1916 to 1962. Montana.

Walt's Indian Artifacts which he donated to the Dillon Museum.

Waterloo School dating - 1916 to 1962. Montana.

Walt's Indian Artifacts which he donated to the Dillon Museum.

Waterloo School dating - 1916 to 1962. Montana.

Walt's Indian Artifacts which he donated to the Dillon Museum.

Waterloo School dating - 1916 to 1962. Montana.

Walt's Indian Artifacts which he donated to the Dillon Museum.

Waterloo School dating - 1916 to 1962. Montana.

## RUBY VALLEY HAPPENINGS

**MADISON COUNTY FAIR & RODEO** - August 9th - August 13th - See Attached Flyer.

**OUTDOOR FAMILY MOVIE NIGHT** - Hosted by Madison /Jefferson Jr. Leaders - August 10th at 7 pm at Show Arena - Bring your own snacks and drinks.

**TWIN BRIDGES ANNUAL VOLUNTEER FIRE DEPARTMENT PANCAKE BREAKFAST** - Main Street - Twin Bridges Fire Hall - August 13th - 6:30 am to 12:30 pm - \$8.00 per person - \$25 for family

**BPOE LODGE 390 125TH ANNIVERSARY** - August 18th and 19th -

**DUSK AT DISCO PARK** - Virginia City - August 25th -

**FUNDRAISER FOR THE TWIN BRIDGES CLINIC** - August 26th - Doors open at 5 pm - Purchase tickets online at [rubyvalleyhealthcarefoundation.org](http://rubyvalleyhealthcarefoundation.org) - See Attached Flyer

**PRAIRIE PALOOZA**- August 25th to the 27th at the historic Horse Prairie Stage Stop - See Attached Flyer

**SHERIDAN FARMERS MARKET & MUSIC**- July 6th through September 14th- Every Thursday from 5:30 to 7:30 pm - Main Street Park in Sheridan

**TWIN BRIDGES FARMERS MARKET** - Saturdays from June to September 9 am to 1 pm.

**GRACE COMMUNITY FELLOWSHIP** - Laurin, Mt, will begin Cowboy Church at the tent in Nevada City, MT. Services begin at 10am, June 4, 2023 through September 3, 2023. Everyone is welcome! If you have any questions call 406-842-5915.

**P'S CLOTHES & MORE:** Located above the Twin Bridges Library. Hours: Monday: 10-2 Wednesday: 9-2 Friday: 10-2 Saturday: 10-2 - All items are FREE to the community. Call P at 406-600-2983 to donate or for questions.

**LOST CABIN BAR:** Monday: Open Pool Table 5-7 - Tuesday: Music Trivia 6:30 - 8 - Wednesday: Whiskey Wednesday (Discount flights and tasters) - Thursday: First Thursday of Month Ladies Night - Friday: Red (Remember Everyone Deployed) Friday. Come in or call for details - Every Monday through Friday Happy Hour 5-6 - Check our FB page for weekend specials @lostcabinbar

**PUBLIC LIBRARY EVENTS:**

**SHERIDAN** - Newspaper History Group - Tuesday mornings @ 9 AM. Knitting Group - Thursdays @ 2 PM

**CAREGIVER SUPPORT GROUP** - First and third Tuesdays at 6 pm For more information call 406-842-7981.

**TWIN BRIDGES** - Thank you for everyone who filled out our survey! We are always working to make our library fit the needs of our community. Our five winners of the \$20 in Twin Bucks are: Anna Ingram, Rachelle Parsons, Betty Humbert, Lela Wendt, and Sheila Burke. Congratulations! Check in at the library for information about our summer reading program schedule. It looks to be a lot of fun! Don't forget Lego Club...There will be no meeting in May, but will pick up again in June!

**TWIN BRIDGES HELPING HANDS:** Twin Bridges-MT Helping Hand Food Pantry, we aim to End Hunger in Montana. We have moved to 208 1/2 S. Main St. Wednesday's. 10am to 3pm. Call for appointment any other day or time. We are here for you Madison County and neighboring towns. Pantry is open every Wednesday 11-2 or call for an appointment. Have on Hand canned fruits, vegetables, soups, sauces, jams, jellies, more. Boxed or bags of rice, beans, dinner helpers, pasta, dry milk, some meat. Toiletries. Adult pads/pull ups. Laundry items. Cleaning supplies. Dog, Cat food and Litter. If you don't see what you would like us to carry, please let us know. 596-1978 & 233-9616

**RUBY VALLEY FOOD PANTRY:** Food is distributed on Saturday mornings from 10-12 @ 206 S. Main in Sheridan, MT -between gas station and post office.

**3 RIVERS WORSHIP CENTER: GRIEF SUPPORT GROUP - WEEKLY - FOR MORE INFORMATION CONTACT - 406-381-6677** Worship is what we are all about and we would love to have you join us. Come as you are and be blessed. Every Sunday @ 10:30 am @ 3648 MT-287. Family friendly. Weekly Grief Support Group - Saturdays at 10 am and Mondays at 6 PM - for more information call 406-381-6677

**If you have a event you would like us to help you promote, please let us know.**  
[www.rubyvalleynugget@gmail.com](mailto:www.rubyvalleynugget@gmail.com)

**DEADLINE FOR SUBMISSIONS TO THE RUBY VALLEY NUGGET HAS CHANGED TO MONDAYS!**

*Spiffy Biffy Portable Toilets Inc.*  
**Gary & Heather Caprara**  
 PHONE: 406-596-0593  
 406-580-1574  
 spiffybiffyportables@gmail.com

**Banks Industrial Services LLC**  
 Excavation, Water/Sewer, Hauling, Welding/Portable, Equipment Rentals  
 Equipment Repair, Pump Repair, Used Equipment Sales  
**David Banks**  
 BISLLC@hotmail.com 5 Rogers Road Silver Star, MT 59751  
 406-596-6049 406-684-5128

**EH ENNIS HOME FURNISHINGS**  
 MATTRESSES, APPLIANCES, FURNITURE, ELECTRONICS  
 ennishomefurnishings.com Office: 406-682-3250 120 W Williams St  
 order@ennisfurnishings.com Fax: 406-682-3231 Ennis, MT 59729

**BERKSHIRE HATHAWAY HOMESERVICES MONTANA PROPERTIES**  
**MIRANDA WHEELER, REALTOR**  
 406.640.1655  
 miranda.wheeler@bhhsmt.com

**NOVICH INSURANCE**  
 novich@montanainurance.net  
 P: (406)684-5264 / F: (406)684-5701  
 PO Box 394 / 104 W 4th Ave - Twin Bridges, MT 59754  
 Home - Auto - Farm/Ranch - Business - Work Comp

**HARSHBARGER LAW FIRM**  
 www.harshbargerlawfirm.com  
 Lori A. Harshbarger, Attorney  
 Kylee Gibson, Attorney  
 Hilary O. Betson, Attorney  
 Tai Goldin, Of Counsel  
 204 S. Main Street  
 P.O. Box 445  
 Twin Bridges, MT 59754  
 Phone: (406) 684-5001  
 Fax: (406) 684-5116  
 2022 has brought some exciting changes to our business! We have relocated our office to Twin Bridges. We look forward to helping you with your legal matters at our new location, by phone or via Zoom.

**RENEGADE ELECTRIC**  
**Adam Davis | Dereck Short**  
 406.596.5281  
 renegadeelectric406@gmail.com

**BPOE Lodge 390 Anniversary**  
*125th*  
**Virginia City, Montana**  
 1898 - 2023  
*Friday August 18*  
 3 - 10 pm Happy Hour - Brats - Music  
*Saturday August 19*  
 NOON Lodge and Bar Opens  
 1 pm - 4 pm Poker Stroll  
 4 pm Music & Happy Hour  
 5:30 pm BBQ'd Tri-Tip \$20  
 7 PM 125th Plaques Presentation and Pin Ceremony  
 Music -- Joe Shields 4-5:30 Katie Hall 5:30-7  
 RSVP Appreciated by Aug. 8th  
 RSVP/Questions: elks390@gmail.com 406-660-1559

TWIN BRIDGES PUBLIC SCHOOLS August 2023

Sun	Mon	Tue	Wed	Thu	Fri	Sat
Both gyms CLOSED for floor refinishing		Concussion 1	Impact 2	Testing, 9am-4pm 3		
	6pm Parent Sports Mtg (MT room)					
Both gyms CLOSED for floor refinishing		7pm REG BOARD MTG (MT rm)	Madison 8	County 9	Fair 10	1st day of practice - HS FB, HS VB, XC, MS FB 11
				6pm Super Stars 4-H mtg (lunchrm) 16		County Fair 12
Both gyms CLOSED for floor refinishing						
	P.I.R. Day #1 20	P.I.R. Day #2 21	1st day of school! 22		2pm Vitalant Blood Drive (MT rm) 4pm HS VB w/ Sheridan (H) 24	10am MS FB w/ Gardiner (T) 1pm HS FB w/ Gardiner (T) 25
				4pm HS VB w/ WY (H) 30		

**RE/MAX**  
 WHETHER YOU ARE BUYING OR SELLING, WE'LL WORK HARD FOR YOU.  
 Nobody in the world sells more real estate than RE/MAX.<sup>1</sup> RE/MAX is the most productive real estate network in the world.<sup>1</sup> RE/MAX agents have the experience to get the job done in today's market.  
 RE/MAX Associates average more sales than other real estate agents. RE/MAX: The #1 name in real estate and brand awareness, and the RE/MAX balloon is recognized all over the world.<sup>2</sup>  
 When you join RE/MAX you're receiving the benefit of billions of dollars of advertising that have made RE/MAX the real estate leader it is today.  
 Millions of buyers and sellers visit remax.com for their real estate needs. remax.com shows all of the listings in thousands of cities and towns. Each year, RE/MAX agents help hundreds of thousands of families buy or sell a home.  
<sup>1</sup>As measured by residential transaction sales.  
<sup>2</sup>Source: MMR Strategy Group study of unaided awareness.  
**RE/MAX MOUNTAIN PROPERTY**  
**LIST WITH ME!**  
**Ann Rhine, REALTOR®**  
 (406) 920-0263  
 arhine.REMAXmntprop@gmail.com  
 Serving the...  
 Ruby, Beaverhead & Jefferson River Valleys!

**GRAHAM DRILLING SHERIDAN, MT**  
 Water Well Drilling,  
 Pump Sales  
 Installation,  
 Service &  
 Repairs.  
 Phone: (406) 842-5214  
 GRAHAMDRILLING.COM

**ODYSSEY**  
 DEPENDABLE COMPUTER REPAIR  
 PC, MAC AND SERVER REPAIR,  
 IT SUPPORT, BUSINESS  
 SECURITY AND CAMERAS  
 FOR HOME OR RANCH  
 WWW.COMPUTERSMT.COM  
 (406) 992-4093

**McLeod Mercantile**  
 "Your locally, family owned fuel distributor"  
 2 convenience store locations  
 Navis & Sheridan  
 Delivering fuel in Madison & Jefferson counties  
 Main office: 685-3379  
 Sheridan store: 842-5478  
 Navis store: 685-3361

**PERFORMANCE FAB WORK**  
**ANDREW BRAACH**  
 CUSTOM WELDING  
 CNC PLASMA CUTTING  
 SIGNS  
 MOBILE REPAIR  
 AUTOMOTIVE REPAIR  
 CUSTOMIZATION  
 DIFFERENTIAL REBUILD  
 406-498-0471  
 P.O. Box 393  
 TWIN BRIDGES, MT 59754  
 PERFORMANCEFABWORK@GMAIL.COM

FOR ALL YOUR CONSTRUCTION, HARDWARE AND FARM/RANCH NEEDS!!!  
**IMOC**  
**BUILDING SUPPLIES**  
 SHERIDAN, MONTANA  
 406.842.5643  
 LUMBER - HARDWARE - FEEDS - LAWN/GARDEN - FARM/RANCH  
 WWW.IMOCBUILDINGSUPPLIES.COM

# GROUP GRIEF SUPPORT

Help and encouragement after the death of a Spouse, child, family member, or friend.



**WEEKLY SUPPORT MEETINGS!**  
**MONDAY NIGHTS AT 7PM**  
**STARTING JULY 31ST**  
**AT THE VALLEY ASSEMBLY**  
**FOR MORE INFORMATION**  
**CONTACT 406-381-6677**

## Dusk at Disco Park

An evening of free music at Discovery-Ellingsen Park, Virginia City

**7pm - 9pm**  
rain or shine - byob byof

**FRIDAYS**  
**June 30** The Dirty Shame  
**July 28** Paige And The Peoples Band  
**Aug 25** Fools Gold

Made possible by  
 3-7-77 Productions • Engel & Völkers - Lincoln & Lisa Roberts • 3 Rivers Communications  
 Virginia City Area Chamber of Commerce • Pioneer Bar • Skip & Jody Hissong  
 Body Dynamics Pilates • Bob's Place • Madison Valley Heating & Cooling  
 Double M Business Services • VICE • Montana Heritage Commission  
 Discovery-Ellingsen Park - 9 Grant Mine Road - Virginia City, MT

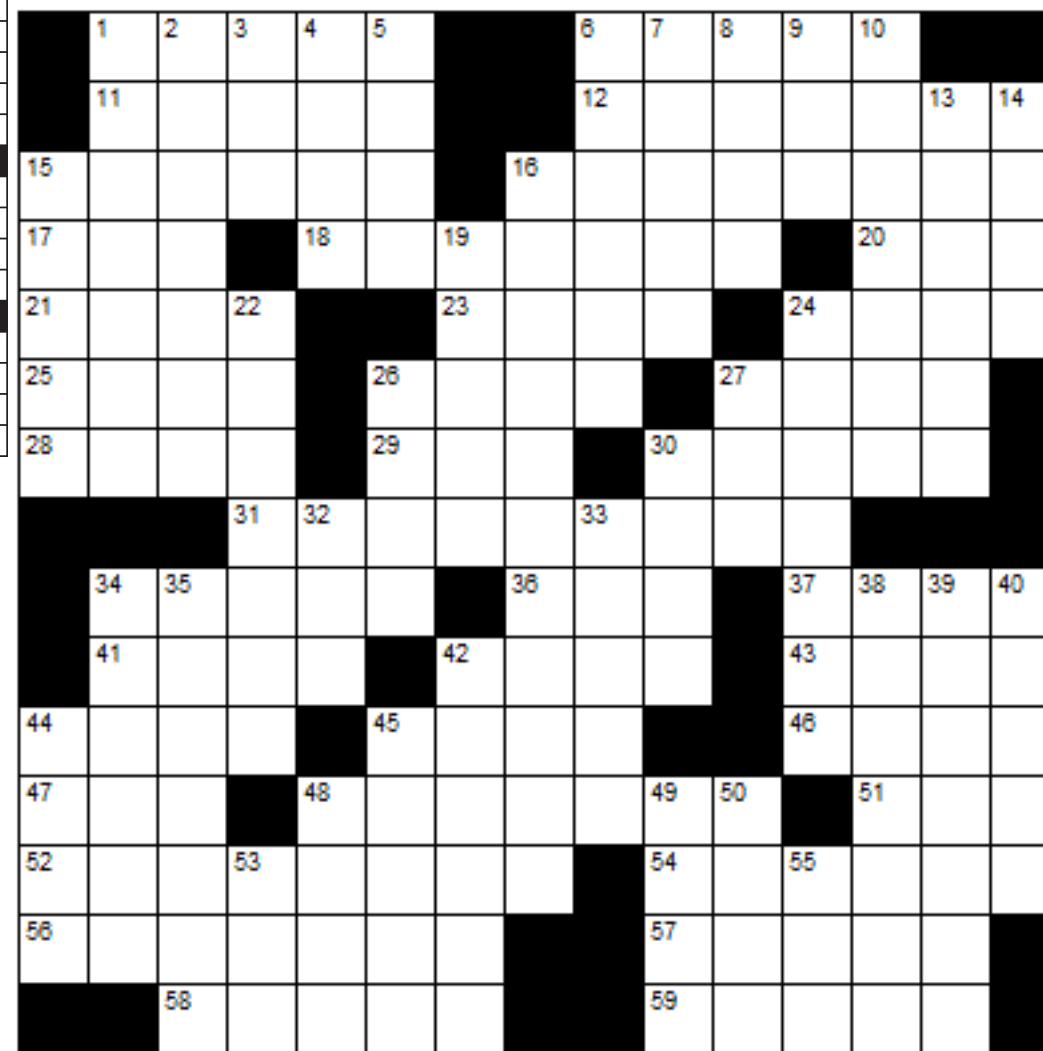
## LAST ISSUE ANSWERS

E	N	D	U	E	R	A	G	A	E	A	R	L	
W	O	U	L	D	E	V	E	N	X	V	I	I	
E	V	A	N	E	S	C	E	N	T	A	I	L	S
S	A	L	A	M	I	N	E	E	C	A	L	L	
A	S	S	U	R	S	E	N	S	E				
E	R	R	S	H	E	A	T	E	R				
B	E	A	T	I	F	Y	L	U	M	B	A	G	O
B	A	N	A	N	A	B	E	A	V	E	R		
S	P	I	N	D	L	E	G	E	N	T	I	L	E
D	I	L	A	T	E	E	D	D	O				
S	A	L	S	A	T	E	E	N	Y				
P	L	O	T	T	A	T	O	A	F	I	S	H	
L	O	C	I	A	B	H	O	R	R	E	N	C	E
A	N	A	L	P	L	E	A	D	A	T	U	M	
T	E	L	L	S	E	R	F	S	T	O	M	P	

### ACROSS

- Devil
- Goes ballistic
- Illegal activity
- Stunning
- Topic
- Send
- Sash
- Not anyplace
- Chapter in history
- Ascend
- Grasped
- Jacket
- Marine mammal
- Slim and muscular
- Made a melodic sound
- Slave
- Consumed
- Half of six
- Gifts
- Extra
- Clobber
- Wild goat
- Glazier's unit
- Courts
- Cast a ballot
- Pub serving
- Pout
- Distinctive flair
- Additionally
- Fundamental
- Bigheadedness
- Spotted felines
- Pay attention
- Unusual
- Illicit sexual relationship
- Change

## CROSSWORD PUZZLE



### DOWN

- Contagious skin infection
- Skilled practitioner
- Small songbird
- Ends a prayer
- Adopted son of Claudius
- Scarcely
- Honor
- Heredity unit
- S
- Somebody
- Illusion
- French for "State"
- A common code
- Near that time or date
- Not black
- Polished
- Longhand
- Gesture of farewell
- Timid
- Faucets
- Anger
- Beau
- Small piano
- Mythological box opener
- Type of fungus
- Knickknack holder
- Colorless odorless inert gas
- Awe
- Friends
- Get together
- Tilt
- "Oh dear!"
- Citrus fruit
- Buddy
- Male child

Get 8 weeks of FREE patches, gum or lozenges  
 SHIPPED STRAIGHT TO YOUR DOOR!

P.O. Box 56  
 Sheridan, MT.  
 Dan Kenworthy (406) 842-5865 PH  
 Cell: 596-4100 (406) 842-7373 FAX  
[kenworthyelectric.com](http://kenworthyelectric.com)

**WE ARE HIRING**  
 SEASONAL WEED CREW



THIS POSITION WILL HELP MANAGE WEEDS THROUGH VARIOUS INTEGRATED WEED MANAGEMENT PRACTICES, OPERATE UTVS, PULL TRAILERS. MUST BE 18. POSITION IS FROM MAY TO SEPTEMBER. PAY STARTS AT 17.00 PER HOUR, DEPENDING ON EXPERIENCE.



CALL US!  
 406-925-1494  
[charles@4mweedcontrol.com](mailto:charles@4mweedcontrol.com)

MADISON-JEFFERSON JR. LEADERS ARE HOSTING AN

**Outdoor FAMILY MOVIE NIGHT**

**THURSDAY, AUGUST 10TH 7PM SHOW ARENA**

BRING YOUR OWN SNACKS AND DRINKS

# BEACON BUSINESS CENTER

Printing - Copy - Graphic Design - UPS & FedEx Shipping Outlet  
Office Supplies - Puzzles - Toys  
& More!

LET US DO YOUR PRINTING  
& MAKE IT EASY FOR YOU

EMAIL US YOUR FILES & WE WILL HAVE IT  
READY WHEN YOU NEED IT

We Do Business Forms

Scan Me!

Let Us Custom Create  
Your 2 & 3 Part  
Business Forms



BEACON BUSINESS CENTER  
beaconbus@gmail.com - www.beaconbusinessctr.com  
203 S. Main - Sheridan, MT

## WORD PUZZLE

### Obscure Metals & Metalloids

M	R	H	O	D	I	U	M	O	S	M	I	U	M
U	C	I	N	E	S	R	A	H	T	O	N	L	C
A	I	N	D	I	U	M	U	M	T	S	L	M	E
R	I	B	I	S	M	U	T	H	N	I	M	L	S
T	T	U	T	B	A	R	I	U	M	T	U	B	I
C	O	I	A	L	R	R	I	U	O	M	I	C	U
G	U	L	N	N	C	I	B	O	R	O	N	A	M
I	A	N	T	I	M	O	N	Y	I	O	A	D	U
E	A	P	A	L	L	A	D	I	U	M	M	M	O
G	A	L	L	I	U	M	A	O	N	U	R	I	M
G	M	U	U	M	D	R	I	A	T	D	E	U	Z
I	B	R	M	D	H	T	N	A	T	A	G	M	U
U	M	M	O	T	H	A	L	L	I	U	M	R	T
I	M	U	Z	I	R	C	O	N	I	U	M	M	O

BISMUTH  
TANTALUM  
GERMANIUM  
ANTIMONY  
INDIUM  
ARSENIC  
THALLIUM  
BORON  
GALLIUM  
RHODIUM  
CESIUM  
OSMIUM  
BARIUM  
ZIRCONIUM  
PALLADIUM  
CADMIUM

.50 cents per card

# Bingo

.50 cents per card

## Twin Bridges Senior Center Fund Raiser

Thursday, August 10, 12:00 pm to 6:00 pm  
Friday, August 11, 12:00 pm to 6:00 pm  
Saturday, August 12, 12:00 pm to 6:00 pm



Please join us in the Pavilion  
All Proceeds go to the Senior Center  
Great Prizes  
Great Fun for Everyone



SPC CONSTRUCTION LLC

Sean Phillips, General Contractor  
New Homes, Additions, Log Structures,  
Rustic Styles, Chinking, Consulting

Home: 406-684-5509 Cell: 406-596-9403

## Ruby Valley Food Pantry

Open Saturdays 10-12 am  
206 S. Main Street, Sheridan  
Green building next to the Post Office



Neighbors helping neighbors

Scan the QR Code to donate

# Montana Medical Savings Accounts



Contribute up to \$4,500 annually, and enjoy tax savings on your Montana tax return. Federally insured safety!

## HighPeaksFCU.com

Sheridan 406-842-5372 Dillon 406-683-4373



Consult your tax advisor. Federally insured by NCUA.

HPF-168c.2



MADISON COUNTY CATTLEWOMEN

# OPEN MEETING

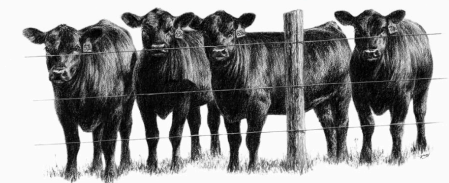
Thursday, August 17th – 6:00 PM  
Madison Valley Public Library, 210 Main Street, Ennis

Come meet the women involved in the MCCW and see what we stand for! Learn about our association and how we are working to benefit agriculture and our communities. This is an open and no commitment meeting!

If you have a passion or an interest in agriculture, come join us! You don't have to have cows to be a part of our association. We'd love to have you!

REFRESHMENTS AND SNACKS WILL BE PROVIDED

Questions? Please email or call us!  
contact@madisoncountycattlewomen.com  
(406) 599-2397



# RE/MAX

MOUNTAIN PROPERTY

## PROPERTIES WANTED!

Residential, River Front Property,  
Farms, Ranches, & Land

Dillon, Twin Bridges, Silver Star, Whitehall,  
Sheridan, Alder & Virginia City



**LIST WITH ME!**  
Ann Rhine, REALTOR®  
(406) 920-0263  
arhine.REMAXmtnprop@gmail.com

Serving the...  
**Ruby, Beaverhead & Jefferson River Valleys!**



**Madison Valley BANK**  
24 Hour ATM Locations:  
Harrison • Ennis • Virginia City  
Sheridan • Boulder • Montana City  
Bozeman • West Yellowstone

Since 1965  
Ennis | Boulder | Montana City  
Bozeman | West Yellowstone  
www.madisonvalleybank.com

Member FDIC

**MOUNTAIN BUILDING CENTER**  
TWIN BRIDGES, MT  
406-842-5363

TRAEGER **DIAMOND KOTE** Building Products Rollex

**Trails End Land Company**  
Jim Kaatz  
Broker/Owner  
PO Box 645  
101 S. Main Street Sheridan, MT 59749  
Phone: 406-842-5960  
Cell: 406-596-1060  
Email: vigilant.jk@gmail.com

**KINNEY CLEANING SERVICE**

CHIMNEY - VENTS - WINDOWS  
DRYER VENT CLEANING - DUCT CLEANING  
ENJOY CLEANER AIR!  
GARY KINNEY  
406-702-5372  
CELL: 406-596-7003  
P.O. BOX 305  
VIRGINIA CITY, MT 59755

OPEN 7 DAYS A WEEK  
8 A.M. - 9 P.M.

**BLUE ANCHOR BAR & GRILL**

DAILY SPECIALS  
NIGHTLY SPECIALS

TWIN BRIDGES MT.  
406-684-5655


CONTACT  
596-7636 OR 539-4238



**BERKSHIRE  
HATHAWAY**  
HOMESERVICES

MONTANA  
PROPERTIES

**Community Events**  
**August 2023**

Sun	Mon	Tues	Wed	Thurs	Fri	Sat
		1 Music Trivia @ Lu's Lost Cabin Bar in Twin Bridges 7pm Dart night @ RV Brew 6pm	2 Ruby Valley Brew – Trivia Night 6:00pm Twin Bridges Food Pantry 10am-3pm	3 Sheridan Cruise- In on Main 6-8pm Sheridan Farmers Market 5:30-7:30pm	4 	5
6 	7	8 Music Trivia @ Lu's Lost Cabin Bar in Twin Bridges 7pm Dart night @ RV Brew 6pm	9 <b>Madison County Fair!</b>	10 <b>Madison County Fair!</b>	11 <b>Madison County Fair!</b>	12 <b>Madison County Fair!</b>
13 <b>Madison County Fair!</b>	14	15 Music Trivia @ Lu's Lost Cabin Bar in Twin Bridges 7pm Dart night @ RV Brew 6pm	16 Ruby Valley Brew – Trivia Night 6:00pm Twin Bridges Food Pantry 10am-3pm	17 Sheridan Cruise- In on Main 6-8pm Sheridan Farmers Market 5:30-7:30pm	18	19
20	21 	22 Music Trivia @ Lu's Lost Cabin Bar in Twin Bridges 7pm Dart night @ RV Brew 6pm	23 Ruby Valley Brew – Trivia Night 6:00pm Twin Bridges Food Pantry 10am-3pm	24 Sheridan Cruise- In on Main 6-8pm Sheridan Farmers Market 5:30-7:30pm	25	26 Twin Bridges Clinic Fundraiser @ The Round Barn – 6pm
27	28	29 Music Trivia @ Lu's Lost Cabin Bar in Twin Bridges 7pm Dart night @ RV Brew 6pm	30 Ruby Valley Brew – Trivia Night 6:00pm Twin Bridges Food Pantry 10am-3pm	31 Sheridan Cruise- In on Main 6-8pm Sheridan Farmers Market 5:30-7:30pm		

**160 ac, Mill Gulch Rd, Sheridan**  
**160 ACRES | \$479,000**

At the base of the Tobacco Root mountains lies a very private getaway of 160 acres. This quarter section has many possible home sites ideal for off-grid living. Take in the 'top of the world' unobstructed views of numerous surrounding mountain ranges. Build your dream home and hunt out the back door. Access the northwest corner of the property from Mill Gulch Rd out of Laurin, or the southeast corner via Water Gulch Ridge Rd

**BERKSHIRE  
HATHAWAY**  
HOMESERVICES  
MONTANA PROPERTIES

118 S. Main St. Sheridan, MT 59749  
©2023 BHH Affiliates, LLC. Real Estate Brokerage Services are offered through the network member franchisees of BHH Affiliates, LLC. Most franchisees are independently owned and operated. Berkshire Hathaway HomeServices and the Berkshire Hathaway HomeServices symbol are registered service marks of Columbia Insurance Company, a Berkshire Hathaway affiliate. Information not verified or guaranteed. If your property is currently listed with a Broker, this is not intended as a solicitation. Equal Housing Opportunity.



**NICHOLETTE PICKEN**  
Broker  
**406.698.0853**



Nicholette Picken  
BROKER®  
(406)698-0853  
nicholette.picken@gmail.com



Madison County Nursing Homes Foundation, in support of the Tobacco Root Mountains Care Center in Sheridan and the Madison Valley Manor in Ennis, wishes you health, happiness and peace during this holiday season and throughout the coming year. Thank you for your ongoing support.

**Board of Directors**

Charity Fechter, President - Melinda Merrill, Vice President  
 Joanne Galiger - Mary Ragsdale - Paul Kramer - Paul Marsh  
 Sammi Christensen - INA Accounting, Ancillary Services

*"How far you go in life depends on your being tender with the young, compassionate with the aged, sympathetic with the striving and tolerant of the weak and strong, because someday in your life you will have been all of these."*  
 - George Washington Carver

**ROCKIN S**  
 BUSINESS SERVICES LLC  
 PO Box 156 Sheridan MT 59749  
 406-682-7769 406-842-7778  
 Cell: 406-581-3818 Fax: 406-281-7242  
 Melody@rockinstax.com WWW.Rockinstax.com

**HEALING WATERS**  
 Lodge  
 TWIN BRIDGES, MONTANA  
 Mike & Laura Geary, Owners  
 270 Tuke Lane - Twin Bridges, Montana  
 Office: 406-684-5960  
 Mike's Cell: 406-459-2030 Laura's Cell: 406-459-5582  
 www.hwllodge.com hwllodgemt@gmail.com

**Resolute Roots**  
 REALTY  
 Dawn Marie Buttrey  
 Broker/Owner  
 406-600-4802  
 ResoluteRoots406@gmail.com

**Madison County Fair**  
**Lawn Mower Tractor Pull**  
 Bring your tractor and show us what you can do!  
 The louder, the better!!  
 \$10 Entry Fee  
 Thursday, August 10th at 4:30 pm before the Ranch Rodeo!  
 For more information please go to....  
<https://www.sheridan.k12.mt.us/domain/59>  
 If any questions, please contact Mr. Braaten 406-596-9696  
 Ruby Valley FFA

AUG 25-27TH AT THE HISTORIC HORSE PRAIRIE STAGE STOP

# PRAIRIE PALOOZA

**CRAIG CAMPBELL**  
**KENDALL TUCKER** LANCE HANDYSIDE  
**DAN HENRY**  
 TYLER POTTER & THE LAST MINUTE SURPRISE  
**Jacob Reed**  
**THE ORNERY JACKS** KATE HALL  
 LINSEY JACOBSON CHIDESTER  
**COFFER & SAGE** CHAD OKRUCHEK **ROB & LOLI**  
 CLIFTONITE **THE BITTERROOT MOUNTAIN TROUBADOUR**

FREE CALISTO Party games & Cornhole Tournament will be held throughout the weekend!  
 1000 347-34 DILLON MT 59718 Local music, brews, hotdogs, & vendors. WWW.PRAIRIEPALOOZA.COM

**LMCH** LMCH Construction & Building Materials  
 your home, from the outside in  
 Gary T. Caprara  
 DESIGN - INSTALLATION - SALES  
 (406) 580-1574 - FAX (406) 458-0138  
 lonemountain70@yahoo.com  
 www.crestwoodinc.com www.canyoncreek.com

**PRAETORIAN** Praetorian Services and Weed Management  
 Zach Hall  
 (406) 596-0245  
 praetorian\_guard63@yahoo.com

**ALLHANDS AUTO CLINIC, LLC**  
 3565 Hwy 287  
 SHERIDAN, MT 59749  
**406-842-7155**  
 FULL SERVICE DIAGNOSTIC AND REPAIR CLINIC  
 MF 7:30AM TO 5:00PM  
 ROBERT ALLHANDS, OWNER 406-596-0502  
 BRADLEY ALLHANDS, OWNER 406-596-5040

**Ruby Valley Sheds**  
**DANIEL & LEONA LEE**  
 179 JUDY LANE - ALDER, MT  
 CELL: 406-217-2131  
 HOME: 406-842-5206

**Opportunity Bank**  
 OF MONTANA  
 OPPORTUNITYBANK.COM

**JTS**  
 CONSTRUCTION LLC  
 TWIN BRIDGES, MT  
**406-925-0615**  
 SPECIALIZING IN NEW HOME CONSTRUCTION AND QUALITY REMODEL AND REPAIR

**Alder Creek**  
 Coffee Roasters  
 117 North Main Unit D  
 Sheridan, MT  
 www.aldercreekcoffeeco.com  
 Hours - 7 a.m. to 3 p.m.

**HOME PARK**  
 ASSISTED LIVING  
 842-5138  
 homeparkassistedliving.com  
 504 RAY LANE  
 SHERIDAN, MONTANA

## SUDOKU PUZZLE

			6					
				4				
	9		8					
5	3	9	1	2		6		
	6	8			9		7	
4	8		6		1	5		
6	3	1						9
		7						
8			7			4	6	

## TWIN BRIDGES MT FARMER'S MARKET

SATURDAYS, 9AM-1PM  
 JUNE - SEPTEMBER  
 MAIN STREET CITY PARK

CONTACT  
 COREE (406) 596-1978  
 JEN (406) 233-9616



Meet Sunny Harmon

## THE CABINET STOP

CABINETS & COUNTER TOPS  
 Locally owned and operated.  
 Serving SW Montana.  
 Offering free 3D layout and quote.  
 No job too big or small!



For more information call  
 Sunny Harmon at: 406-925-0647  
 Jordan Harmon at: 406-925-0615  
 Gary Caprara at: 406-580-1574

## ANSWERS FROM LAST ISSUE

3	5	1	9	7	8	4	2	6
7	9	8	6	2	4	1	5	3
6	2	4	5	3	1	8	7	9
9	4	5	2	8	6	7	3	1
2	6	7	1	5	3	9	8	4
8	1	3	4	9	7	2	6	5
4	8	6	7	1	5	3	9	2
1	3	2	8	6	9	5	4	7
5	7	9	3	4	2	6	1	8

## TWIN BRIDGES ANNUAL VOLUNTEER FIRE DEPARTMENT PANCAKE BREAKFAST

Main Street, Twin Bridges Fire Hall, Twin Bridges, MT  
 SUNDAY, AUGUST 13, 2023 : 6:30 am-12:30 pm (or until food runs out)  
 Cost: \$8.00 per person/\$25 family (immediate family only)

Come support a good cause!  
 Enjoy great food, watch the parade and socialize!!!

## SHERIDAN FARMERS MARKET & LIVE MUSIC

JULY 6th - SEPTEMBER 14th  
 EVERY THURSDAY | 5:30PM to 7:30PM  
 Main Street Park Sheridan  
 Live music, locally grown produce & Montana Made products.  
 If you are interested in being a vendor, please contact Janet Marsh at 406-596-1304

Thank you to Jim Kennedy of Trailsend Ranch for his support!