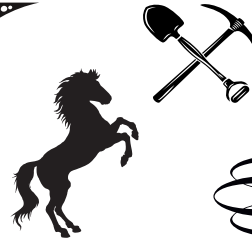


JUNE 2023 - 1ST ISSUE

RUBY VALLEY NUGGET



KIDS FISHING DERBY



Hosted by The Veterans of Twin Bridges!

June 24th at 10 a.m.

Located at Lorie's Pond 2 miles out of Twin Bridges on Hwy 41.

Open for ages 14 and Under!

Everyone that catches a fish will get a prize!

1. If you catch a fish you get a prize
2. Fishermen are divided into 2 groups which is then divided into BOYS AND GIRLS. The first group is 10 years old and younger, the second group is from 11 years old through 14 years old.
3. We have additional prizes for the LARGEST FISH caught by the boy and girl of each group.
4. In addition whoever catches the most fish will get a prize.

Prizes for all who catch a fish. Fishing poles for the biggest fish. Free Lunch for all (Mom, Dad, Kids and others). For more information contact Joe Witherspoon at (406) 842-7722



BH HS
BERKSHIRE HATHAWAY HomeServices
Montana Properties

Frank Colwell
Broker
32 years serving Montana
Real Estate Needs
406.596.1076

3 RIVERS COMMUNICATIONS

Internet Phone

406-467-2535
800-796-4567
3rivers.net

the Elling House
ARTS & HUMANITIES CENTER

presents GRAMMY AWARD WINNING GUITARIST

Mike Dowling

IN CONCERT

Mike Dowling has captured the hearts of acoustic music fans throughout the world with his engaging voice, self-deprecating wit, and elegant interpretations of an arsenal of old blues, swing, rag-time, and original compositions. Mike digs deep into the musical bag of American roots guitar, favoring the melodic Piedmont style of acoustic blues masters like Mississippi John Hurt and slide great Tampa Red. But Mike can't be pigeonholed as a blues player, or even as a fingerstylist. He's far too versatile for that. From bottleneck blues to vintage jazz and much more in between, Mike's musicality, depth, and mastery of the instrument translates fluently to flattop, archtop, and resonator guitars alike.

SATURDAY AT 7^{PM}
June 10th

ADMISSION IS \$20 PER PERSON / RESERVATIONS RECOMMENDED

404 E. IDAHO ST VIRGINIA CITY, MONTANA
406.843.5454 406.843.5507 WWW.ELLINGHOUSE.ORG

McLeod Mercantile

"Your locally, family owned fuel distributor"

2 convenience store locations
Norris & Sheridan
Delivering fuel in Madison & Jefferson counties

Main office: 685-3379
Sheridan store: 842-5478
Norris store: 685-3361

PRAETORIAN Praetorian Services and Weed Management

Zach Hall
(406)596-0245
praetorian_guard53@yahoo.com

NOVICH INSURANCE

novich@montanainurance.net
P: (406)684-5264 / F: (406)684-5701
PO Box 394 / 104 W 4th Ave - Twin Bridges, MT 59754
Home - Auto - Farm/Ranch - Business - Work Comp

MONTANA ARTISTS PAINT MADISON COUNTY EN PLEIN AIR

June, the 8th - 11th, more than a dozen of Montana's finest painters, members of the Montana Painter's Alliance (www.mtpaintersalliance.org) will be painting around the Ruby Valley and Virginia City.

Painting en plein air at the Ruby Habitat

On Sunday June 11th from 11:30 am - 1:00 pm those paintings will be displayed and the public is invited to the showing. Some of the paintings will be available for sale. The show will take place at the Visitors Center on the Ruby Habitat Foundation property in the tiny town of Laurin, MT. The Waldie-Kanouse Visitor Center is located near 199 Ruby River Drive, Sheridan MT...watch for the signs.

Ruby Habitat Foundation is a 1200 acre non-profit ranch in SW Montana whose managed access programs welcome people from around the world for a variety of purposes including recreation, education, and artistic pursuits. For more information, see www.rubyhabitat.org.

Madison Valley BANK

24 Hour ATM Locations:
Harrison • Ennis • Virginia City
Sheridan • Boulder • Montana City
Bozeman • West Yellowstone

Since 1965
Ennis | Boulder | Montana City
Bozeman | West Yellowstone

www.madisonvalleybank.com

Ruby Valley Campground & Convenience Store
In Alder Is Now Open

- Propane Services
- Hot Coffee
- Basic Essentials
- Fishing Equipment
- Campsites Available

8 AM - 7 PM - All Week
406-842-5677

Scan Me!



Spiffy Biffy Portable Toilets Inc.

Gary & Heather Caprara

PHONE: 406-596-0593
406-580-1574
spiffybiffyportables@gmail.com

OPEN 7 DAYS A WEEK
8 A.M. - 9 P.M.

BLUE ANCHOR DAILY SPECIALS

TWIN BRIDGES MT...
406-684-5655

NIGHTLY SPECIALS

BAR & GRILL

CONTACT
596-7636 OR 539-4238

Alder Creek
Coffee Roasters

117 North Main Unit D
Sheridan, MT
www.aldercreekcoffee.com
Hours - 7 a.m. to 3 p.m.

THE SHACK
TWIN BRIDGES, MONTANA

Pizza..Burritos..Beer..Sandwiches..Burgers..Salad Bar..16 Flavors of Ice Cream

301 N. Main 406-684-5050

HOURS:
Tuesdays through Sunday ~ 11 a.m. - 8 p.m.
Call 406-684-5050 for Daily Specials

P's Clothes Closet & More

Located above the Twin Bridges Library

OPEN HOURS

MONDAY	10AM - 2PM
WEDNESDAY	9AM - 2PM
FRIDAY	10AM - 2PM
SATURDAY	10AM - 2PM

ALL items are FREE to the community! Mens, womens, and childrens clothing, toys, household items, sheets, towels, etc. Donations are greatly appreciated and can be dropped off during open hours or by appointment by calling P @ (406) 600-2983

HANDYMAN TICE

Corey Tice 720-732-6506
PO Box 42 Cptice@yahoo.com
Sheridan, MT 59749 Free Estimates

Carpentry Flooring Drywall Sprinkler Systems Automotive Repair

Marsh's Mountain Greenhouse

Bedding Plants - Herbs - Vegetables
Perennials - Hanging Baskets
Paint your Garden with Plants!

NOW OPEN!

Sarris Marsh
52 Marsh Ln, Sheridan | 842-5971 | cell 596-1231

A & E Lawn Care
(406) 683 6734

Lawn maintenance,
Tree pruning/removal
Servicing the Dillon, Twin Bridges,
Sheridan area.

PUBLISHED BY BEACON BUSINESS CENTER ~ 406-842-7488

DESIGNED BY JOETTA WETZSTEON - CONTACT: RUBYVALLEYNUGGET@GMAIL.COM - WWW.BEACONBUSINESSCTR.COM

AUTHORIZED FEDEX & UPS SHIPPING CENTER SUPPLIES

HOME DECOR - TOYS - CRAFTS - PUZZLES - OFFICE SUPPLIES - COPY - FAX - GRAPHIC DESIGN - AND MORE...

HERITAGE APPLE ORCHARDS

As farms and ranches started to spring up in Montana, the pioneers experimented with various seeds that they either brought with them or mailed to them. As they planted various types of fruit trees the apple seeds were found to be one of the most successful for the Ruby Valley area.

Francis Crane owned a ranch up Wisconsin Creek and in 1864 he put in his first apple orchard. This place was once called the Sunnyside Ranch and later was owned by Charles La Due. Also up Wisconsin Creek was the J.K. Hartt Ranch and they owned the second oldest apple orchard that was planted in 1869.

In 1864 Frank Redfern and later his son John Redfern owned a ranch 2 miles east of Laurin and consisting of 160 acres which produced hay, grain, as well as a fine apple orchard.

Mr. Brundy owned a farm close to Alder in the late 1860s that produced wild hay and various fruit trees. A letter written on July 14, 1866 from a visitor to Mr. Brundy's farm stated "In company with Mr. B., we took a look at his farm and crops....We were also shown a bed of strawberries, rows of currant bushes, and some four or five hundred peach, apple, plum, pear and cherry trees, which looked well."

Advertisements from the late 1800's can be found in Montana Newspapers for a variety of trees for sale from ranches and farms mentioned above including apples, pears, plums, peaches, cherry and apricot. Mr. Brundy and Mr. Redfern became successful orchardists for the Ruby Valley area. Mr. Brundy was reported saying "I bought several hundred...and set them out against the advice of some of my neighbors, one of whom said I was a fool for planting apple trees on good wheat land....Later I shipped the first straight car of apples grown in Montana...."

It was reported in October of 1899 The Boettcher Ranch on Granite Creek grew a ton and a half of apples and sold them to the local grocery stores in Madison and Ruby Valley areas. There were six varieties of apples grown on the ranch and they were called Early Transparent, Wolf River, Baldwin, Gideon, Wealthy and Duchess of Oldenburg. Reports of the Early Transparent was the finest as it was said to be mellow in flavor. By 1899, Marcus Daly had planted the second largest apple orchard in the world in the Bitterroot with 665,000 trees planted and producing apples. Apple production was doing so well in Montana that by the early 1900s solutions were needed for surplus or unmarketable fruit. In 1903 a vinegar/cider plant was installed in the historic town of Carlton (which was also located in the Bitterroot area) just in time for handling that fall's harvest surplus. An apple canning plant opened in 1909 on the Bitterroot Stock Farm (owned by Marcus Daly) and it was reported in 1903 that a massive apple press was operating near Victor at the time of the Curlew mine. This would be where many Ruby Valley fruit growers would send their overflow of apples to be processed.

The Ruby Valley still has many historic apple trees that remain dotted around the area and can be found in Ruby Valley home yards or on old trails. Ruby Valley has what Katrina Mendrey considers to be excellent examples of heritage orchards. Katrina Mendrey is the orchard program manager at MSU's Western Agricultural Research Center in Corvallis. She oversees the Montana Heritage Orchard Program, the goal of which is to preserve Montana's fruit production history and the genetic diversity of fruits that have historically grown well in the Montana climate.

In this position, with the help of retired U.S. Forest Service historian Mary Williams, she has compiled historical references to apples in the state between 1840 and 1940— approximately one hundred different cultivars of apple were planted across Montana between 1865 and 1902— and she's surveyed heritage orchards around the state. These are trees that have withstood over a century of the Ruby Valley's harsh, high-elevation climate and are still producing apples. When Katrina Mendrey sees these trees, she sees apples that may hold the key to successful orchards around Montana.

Craig Woodson owned a farm by Laurin with a passion for the land and it's capabilities. With this in mind Mr. Woodson wanted the farm to stay intact for the future and be kept in operation for the Ruby Valley community. To that end, the Woodson family partnered with Montana Land Reliance to create the Ruby Habitat Foundation in 2002, to manage the property in perpetuity.

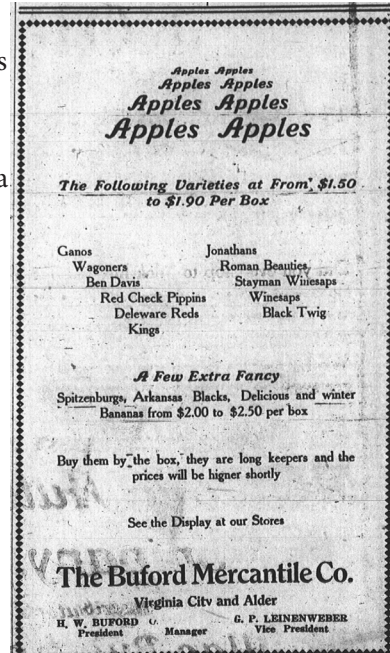
Dave Delisi, the foundation's outreach coordinator, thinks they have already made two valuable contributions to the local ranching community: They've increased no-till farming in the valley, after acquiring a no-till seed drill that allows seeds to be planted without fully turning over the soil and they've increased awareness about ways landscape conservation and agriculture can work together. In 2019, Les Gilman and Dave Delisi participated in one of Mendrey's grafting workshops held at the research station in Corvallis. The following summer, they planted two hundred thirty rootstock seedlings in a 1-acre test orchard on the foundation's property. In August 2020, they grafted scion—bud wood collected from ten known apple varieties and several variety mysteries from around the Ruby—onto the rootstock. The orchard plot is on a limestone bench to the west of the Ruby River. The plot is surrounded by an 8-foot deer fence with an automatic solar timer controls with a valve allowing gravity-fed irrigation water from an old passive irrigation channel fed by the Ruby Dam to sprinkle the orchard. Dwarf rootstock trees are planted in nine rows of twenty with additional two rows of standard apple trees and with five plum trees that grow alongside. Extra trees line the front of the orchard in gallon pots.

An orchard started from scratch is a tender thing. To reduce competition for water, all the grasses were removed prior to planting rootstock, and the plot was fertilized with cow manure. In June 2020, the rootstock plants stood no more than 2 feet high in the brown dirt, leafing out a dozen tender green leaves, two hundred thirty individual shoots of hope.

When the Ruby Habitat Foundation first decided to plant a heritage orchard, Delisi read a two-hundred-page book about all of the potential issues an orchardist could face: irrigation, fertility, coddling moth, fire blight, voles, pocket gophers, and other small vertebrates. "It's insane to try to grow apples. Every apple you eat is a miracle," Delisi says. "[But] to me, it's full of hope, this orchard. We're doing all of this for future generations, on a wing and a prayer."

Researched by Joetta Wetzsteon - Sources:

Montana Newspapers online source - MSU Online Resources - Ruby Valley Habitat Foundation



RUBY VALLEY HAPPENINGS

GRACE COMMUNITY FELLOWSHIP - Laurin, Mt, will begin Cowboy Church at the tent in Nevada City, MT. Services begin at 10am, June 4, 2023 through September 3, 2023. Everyone is welcome! If you have any questions call 406-842-5915.

MONTANA ARTISTS PAINT MADISON COUNTY EN PLEIN AIR - June the 8th - 11th - go to www.mtpaintersalliance.org for more information.

TWIN BRIDGES FARMERS MARKET - Saturdays from June to September 9 am to 1 pm.

ELLING HOUSE EVENTS - Mike Dowling in Concert June 10th at 7 pm - Growling Old Men in Concert - June 28th at 7 pm - 404 E. Idaho St - Virginia City, Montana. www.ellinghouse.org

VIGILANTE MUSIC FEST - June 10th - Noon - Discovery Park in Virginia City, MT

LINDA FOY GALLERY EVENTS - June Gallery Night - June 16th from 4-7 - Baroque Music Montana Concert - July 16th at 4 pm - Tickets are \$20 at <https://baroquemusicmontana.org/2022-23-season/> - refreshments served at all events - 104 S. Main Street - Twin Bridges, MT www.lindafoy.com

FLY IN - June 17th - 8:30 am - Free event, open to the public. Twin Bridges Airport - The event will kick off with a pancake breakfast fundraiser by the Twin Bridges Rotary and VFW. There will be free airplane rides for kids 8-17 between 8 am and 10 a.m. You won't want to miss the pilot games and kids will definitely want to join the ping pong ball drop. To complete the event, join us for a free BBQ lunch. Cash prizes for people's choice 1st-3rd for aircraft and car's.

KIDS FISHING DERBY - June 24th at 10 am - Located at Lorie's Pond 2 miles out of Twin Bridges on Highway 41.

EVANS PAY IT FORWARD FUNDRAISER - June 25th from 3pm to 7pm at the Blue Anchor in twin. Dinner/Silent Auction/drinks to support Evans Cancer journey by paying it forward.

TWIN BRIDGES BLUEGRASS FESTIVAL - June 28th to July 2nd - The first annual Twin Bridges Bluegrass Festival, held in Twin Bridges, Montana, at the Madison County Fairgrounds. Gates open for camping at 0800 on Wednesday, June 28th, and you are welcome to stay through Monday morning, July 3rd. There will be 10+ bands playing music on Friday, Saturday and Sunday, food and craft vendors, a building for folks to set up in who would like to sew or quilt, and if we can get 20 people to sign up, there will be a horseshoe tournament on Saturday morning. Folks are highly encouraged to jam as much as possible, and there will be 2 buildings available as pickin' sheds for nighttime jams, should folks want to use them. If you like trout fishing, the Beaverhead River runs right along the edge of the fairgrounds, and town is located just across the river. The fairgrounds are located right off Hwy 41, and are 1/2 hour from Dillon and I15, 1 hour from Butte, and 1 1/2 hours away from Bozeman. This will be a wonderful family event, and we sure hope to see you there. More details about the venue, the bands, etc, are on the website. <https://twinbridgesbluegrass.com>

FLOATING FLOTILLA RIVER PARADE - July 22nd at 11 am - Get your parade floats ready for the Floating Flotilla River Parade Saturday, July 22nd! Float line up is at 11:30AM, parade starts at 12:00PM!! 2022 Theme is TBD Best Float Awards: Adults: \$200.00 Youth (17 and under): \$100.00 Duck Race to follow!

SHERIDAN DAYS - July 27th to July 30th - Under the Sea! Thursday 6 pm Car Cruise @ RVB, Friday @ 6 Dinner & Beer Gardens sponsored by SCCF with Live Music by Winnie Brave; Saturday @ 8am is the Fun Run, 10 am parade, 11 am Dodge ball, 12pm is lunch sponsored by Fire Department, Kids Activities & Vendors, 1pm Horseshoes, 3pm Corn hole, 5 pm Duck Races, 6 pm Dinner sponsored by SAR & Beer Gardens sponsored by SCCF with Live music by Dan Henry; Sunday 10 am to noon Jacksons Garden Brunch, Church Service & Silent Auction.

RUBY VALLEY POOL: Are you or someone you know looking for a summer job? We are accepting applications and holding interviews next week! We offer competitive wages, opportunity for a tan and flexible schedules. Applications can be found on our website www.rubyvalleypool.com Please email completed applications to swimsheridan@gmail.com

P'S CLOTHES & MORE: Located above the Twin Bridges Library. Hours: Monday: 10-2 Wednesday: 9-2 Friday: 10-2 Saturday: 10-2 - All items are FREE to the community. Call P at 406-600-2983 to donate or for questions.

LOST CABIN BAR: Monday: Open Pool Table 5-7 - Tuesday: Music Trivia 6:30 - 8 - Wednesday: Whiskey Wednesday (Discount flights and tasters) - Thursday: First Thursday of Month Ladies Night - Friday: Red (Remember Everyone Deployed) Friday. Come in or call for details - Every Monday through Friday Happy Hour 5-6 - Check our FB page for weekend specials @lostcabinbar

PUBLIC LIBRARY EVENTS:

SHERIDAN - Newspaper History Group - Tuesday mornings @ 9 AM. Knitting Group - Thursdays @ 2 PM

CAREGIVER SUPPORT GROUP - First and third Tuesdays at 6 pm For more information call 406-842-7981.

TWIN BRIDGES - Thank you for everyone who filled out our survey! We are always working to make our library fit the needs of our community. Our five winners of the \$20 in Twin Bucks are: Anna Ingram, Rachelle Parsons, Betty Humbert, Lela Wendt, and Sheila Burke. Congratulations! Check in at the library for information about our summer reading program schedule. It looks to be a lot of fun! Don't forget Lego Club...There will be no meeting in May, but will pick up again in June!

TWIN BRIDGES HELPING HANDS: Twin Bridges-MT Helping Hand Food Pantry, we aim to End Hunger in Montana. We have moved to 208 1/2 S. Main St. Wednesday's. 10am to 3pm. Call for appointment any other day or time. We are here for you Madison County and neighboring towns. Pantry is open every Wednesday 11-2 or call for an appointment. Have on Hand canned fruits, vegetables, soups, sauces, jams, jellies, more. Boxed or bags of rice, beans, dinner helpers, pasta, dry milk, some meat. Toiletries. Adult pads/pull ups. Laundry items. Cleaning supplies. Dog, Cat food and Litter. If you don't see what you would like us to carry, please let us know. 596-1978 & 233-9616

RUBY VALLEY FOOD PANTRY: Food is distributed on Saturday mornings from 10-12 @ 206 S. Main in Sheridan, MT -between gas station and post office.

3 RIVERS WORSHIP CENTER: Worship is what we are all about and we would love to have you join us. Come as you are and be blessed. Every Sunday @ 10:30 am @ 3648 MT-287. Family friendly. Weekly Grief Support Group - Saturdays at 10 am and Mondays at 6 PM - for more information call 406-381-6677

If you have a event you would like us to help you promote, please let us know.

www.rubyvalleynugget@gmail.com



MATTRESSES, APPLIANCES, FURNITURE, ELECTRONICS

ennishomefurnishings.com | Office: 406-882-3250 | 120 W Williams St
 order@ennishomefurnishings.com | Fax: 406-882-3231 | Ennis, MT 59729

FOR ALL YOUR CONSTRUCTION HARDWARE AND FARM RANCH NEEDS!!!!



LUMBER HARDWARE FEEDS LAWN/GARDEN FARM/RANCH
 WWW.IMOCBUILDINGSUPPLIES.COM

www.imocbuildingsupplies.com

Banks Industrial Services LLC

Excavation, Water/Sewer, Hauling, Welding/Portable, Equipment Rentals
 Equipment Repair, Pump Repair, Used Equipment Sales

David Banks
 BISLLC@hotmail.com | 5 Rogers Road Silver Star, MT 59751
 406-596-6049 | 406-684-5128



HARSHBARGER LAW FIRM

www.harshbargerlawfirm.com

Lori A. Harshbarger, Attorney
 Kylee Gibson, Attorney
 Hilary O. Betson, Attorney
 Tai Goldin, Of Counsel

204 S. Main Street
 P.O. Box 445
 Twin Bridges, MT 59754

Phone: (406) 684-5001
 Fax: (406) 684-5116

2022 has brought some exciting changes to our business! We have relocated our office to Twin Bridges. We look forward to helping you with your legal matters at our new location, by phone or via Zoom.

BERKSHIRE HATHAWAY HOMESERVICES | MONTANA PROPERTIES
MIRANDA WHEELER, REALTOR
 406.640.1655
 miranda.wheeler@bhsmmt.com

RENEGADE ⚡ ELECTRIC

Adam Davis | Dereck Short

406.596.5281

renegadeelectric406@gmail.com

LINDA FOY | ATELIER

contemporary western landscape and nature art



SUMMER EVENTS!

JUNE GALLERY NIGHT
 FRIDAY, JUNE 16TH, 4-7 PM

BAROQUE MUSIC MONTANA CONCERT
 SUNDAY, JULY 16, 4 PM

Tickets: \$20 (suggested donation, limited seating) at:
<https://baroquemusicmontana.org/2022-23-season/>

Refreshments served at all events

104 S. Main St. Twin Bridges, MT
 www.lindafoy.com



Falcon Football Camp
 Twin Bridges
 5th-8th grade
 July 20, 21, 22, Thursday, Friday, Saturday
 9 am - 2 pm

Falcon Football Camp is a supervised limited contact football camp. Coaches will be providing basic football fundamentals through instruction, drills, and games. Camp will run July 20th through 22nd.

A sack lunch will be provided for participants, with a BBQ and Flag Football game on the last day of camp. We ask that parents/guardians provide their own health insurance for each participant.

Registration Fee is \$35 per participant with scholarships available so everyone can participate. Each child will receive a shirt, sizing will be on the registration forms.

Max number of camp participants is limited to 40 and is open to any school in the area so please sign up as soon as possible. All registrations are due by June 30th.

A drawing for raffle tickets sold will be drawn by the participants at the end of the camp. Tickets are one for \$5 or five for \$20. If you would like tickets to purchase or sell please contact Frank or Jennifer Williams. Tickets will also be located at local businesses for purchase.

- Raffle Prizes:
1. Float trip with Flatline Outfitters
 2. 1/2 Pig processed
 3. 1/2 Pig Processed
 4. Handmade and stained Wall Coat Rack
 5. Gift Baskets

For a registration forms or raffle tickets please contact Frank, or Jennifer Williams at (406) 925-9759 or fjcowboys@hotmail.com.

P.O. Box 56
 Sheridan, MT.
 Dan Kenworthy (406) 842-5865 PH
 Cell: 596-4100 (406) 842-7373 FAX
kenworthyelectric.com

Residential & Commercial Heating & Air Conditioning
 406-221-6677

Twin Bridges, MT
 406-684-5499
DIAMOND KOTE Building Products | Rollex | HANDMADE

Get 8 weeks of FREE patches, gum or lozenges
 SHIPPED STRAIGHT TO YOUR DOOR!

DEPENDABLE COMPUTER REPAIR
 PC, MAC AND SERVER REPAIR, IT SUPPORT, BUSINESS SECURITY AND CAMERAS FOR HOME OR RANCH
 WWW.COMPUTERSMT.COM
 (406) 992-4093

RUBY VALLEY BREW REMAIN UNTAMED
 WE TIP OUR GLASS TO THE WILDER ONES
 111 S. MAIN - SHERIDAN, MT - 842-5977

Sean Phillips, General Contractor
 New Homes, Additions, Log Structures, Rustic Styles, Chinking, Consulting
 Home: 406-684-5509 Cell: 406-596-9403

610 N Montana Street - Dillon, MT 59725
 Office: 406-683-3635
 Cell: 406-660-2440
 Jessie Brooks
 Licensed Montana Realtor
 MLS

109 S. MAIN ST.
 TWIN BRIDGES, MT
 406-684-5482
 COLDEST BEER IN TOWN

Twin Bridges Bluegrass Festival
 June 28th - July 2nd
 Madison County Fairgrounds, Twin Bridges, Montana
 2 Fairgrounds Loop Rd

Kentucky Sky | Low Water String Band | Lochwood | Montana Standard

Runaway Train | Oly Mtn. Boys

93 North | Mountain Strings

Dillon Junior Fiddlers | Prairie Wildfire | DeGroot Band | The Music Bachs

Food and craft vendors | Trout filled river borders the fairground | Indoor areas for night jamming



twinbridgesbluegrass.com

For more information call Gene Bach at 530-340-0214

Sheridan School District No. 5 is accepting applications for two Paraprofessional/teachers' aides positions for the 2023-24 school year (32 hrs/week, starting wage approx. \$14.35/hr.) Sheridan School District operates on a four-day school week. Benefits for hourly positions include state retirement, vacation, and sick leave. Information and applications are available on the district website at sheridan.k12.mt.us, or by contacting Becky Larsen (becky.larsen@sheridan.k12.mt.us) or Mike Wetherbee (mike.wetherbee@sheridan.k12.mt.us) or by calling 406-842-5302. All successful applicants must pass a federal fingerprint-based background check.

GRIEF SUPPORT GROUP

Help and encouragement after the death of a spouse, child, family member, or friend.



WEEKLY GRIEF SUPPORT GROUP
When: Saturday - 10 AM
Monday - 6 PM

For Information Contact: 406-381-6677

Where: 3 RIVERS WORSHIP CENTER
3648 MT HWY 287
Sheridan, MT 59749



Do you care for someone with dementia, disability or chronic illness?

You Are Not Alone!

CAREGIVER SUPPORT GROUP

First and Third Tuesdays at 6pm
at the Sheridan Library
109 East Hamilton St, Sheridan
406-842-5770

The Caregiver Support Group provides emotional, educational and social support for the caregivers, family and friends of individuals with dementia, disability, or chronic illness.

We are so close!

Can you help us complete this project?

We have raised \$110,000 and our goal is **\$130,000**



Sheridan Community Charitable Foundation
PO Box 435 • Sheridan, MT 59749



LAST ISSUE ANSWERS

K	A	R	M	A	B	L	E	D	C	O	S	T	
E	M	A	I	L	L	U	R	E	O	N	C	E	
P	E	N	C	E	A	S	I	A	M	I	E	N	
I	N	T	E	R	E	S	T	E	D	P	O	N	D
T	N	T	P	L	A	N	T						
S	H	I	E	L	D	F	L	A	I	R			
E	A	R	L	Y	P	A	I	N	T	I	N	G	S
A	L	E	E	W	A	L	L	S	S	A	L	E	
M	E	S	M	E	R	I	S	T	R	O	G	U	E
E	L	I	D	E	L	E	N	S	E	S			
H	A	N	D	S	H	O	T						
T	E	N	T	T	H	E	A	T	R	I	C	A	L
U	L	N	A	L	A	R	D	A	D	O	R	E	
S	L	U	R	E	L	S	E	C	E	A	S	E	
H	O	L	Y	T	O	T	S	T	A	L	E	S	

ACROSS

1. Clothed
5. Portion
10. Impressed
14. Was a passenger
15. Novices
16. Beak
17. Act of showing affection
19. Not any
20. Snake-like fish
21. Raise
22. Monarch
23. Gift
25. Assumed name
27. Witch
28. Pin for a man
31. Cirrus or cumulus
34. Door pivot
35. Consumer Price Index
36. Boor
37. Funeral piles
38. Three-handed card game
39. Choose
40. Abnormally active
41. Noodles
42. Gesticulates
44. Dike
45. Mineral excavator
46. Under
50. Legislate
52. Encourage
54. Darjeeling or oolong
55. Seals a champagne bottle
56. Exchange letters
58. Give as an example
59. Gastric woe
60. Initial wager
61. Once, long ago
62. Brute
63. Not more

CROSSWORD PUZZLE

1	2	3	4		5	6	7	8	9		10	11	12	13		
14					15						16					
17					18						19					
20					21						22					
23					24					25	26					
					27					28				29	30	
31	32	33						34						35		
36								37						38		
39								40						41		
42								43						44		
								45						46		
														47	48	49
50	51							52	53					54		
55								56						57		
58								59						60		
61								62						63		

DOWN

- | | | |
|---|--|--|
| <ol style="list-style-type: none"> 1. Move furtively 2. Hermit 3. Confuse 4. D 5. Powerful 6. Boundary 7. Angers 8. Basket or bowl 9. Estimated (abbrev.) 10. Yearly 11. Bags of wool 12. Slave 13. Elk or caribou | <ol style="list-style-type: none"> 18. Coming up 22. Oriental grain 24. Close 26. Limbs 28. Rubber wheels 29. Expectored 30. Falafel bread 31. Blockage 32. Easy gait 33. Outthinks 34. Exaggeration 37. Combustible pile 38. Identical | <ol style="list-style-type: none"> 40. Stalk 41. Trousers 43. Instrument of admission 44. Wasteland 46. Drills 47. Expiate 48. Canvas dwellings 49. Hell 50. Behold, in old Rome 51. French for "Black" 53. Whale 56. Baby bear 57. Buddy |
|---|--|--|

BEACON BUSINESS CENTER

Printing - Copy - Graphic Design - UPS & FedEx Shipping Outlet
Office Supplies - Puzzles - Toys
& More!

LET US DO YOUR PRINTING
& MAKE IT EASY FOR YOU
EMAIL US YOUR FILES & WE WILL HAVE IT
READY WHEN YOU NEED IT

20 % off
All Home Decor

Scan Me!



BEACON BUSINESS CENTER
beaconbus@gmail.com - www.beaconbusinessctr.com
203 S. Main - Sheridan, MT
406-842-7488

Opportunity Bank
OF MONTANA

FDIC OPPORTUNITYBANK.COM

JTs
CONSTRUCTION LLC
TWIN BRIDGES, MT
406-925-0615
SPECIALIZING IN NEW HOME CONSTRUCTION
AND QUALITY REMODEL AND REPAIR

Trails End Land Company
Jim Kaatz
Broker/Owner
PO Box 645
101 S. Main Street Sheridan, MT 59749
Phone: 406-842-5960
Cell: 406-596-1060
Email: vigilant.jk@gmail.com

Picturing a new kitchen?



A Home Equity Line of Credit
is the affordable way to get things done.
And our friendly team makes it easy.

HighPeaksFCU.com

Sheridan 406-842-5372 Dillon 406-683-4373



Loans subject to approval. NMLS #695851 Federally insured by NCUA. HPF-099d.1

Ruby Valley Food Pantry

Open Saturdays 10-12 am
206 S. Main Street, Sheridan
Green building next to the Post Office

Neighbors helping
neighbors



Scan the QR
Code to donate

HOME PARK
ASSISTED LIVING

842-5133
homeparkassistedliving.com
504 RAY LANE
SHERIDAN, MONTANA

WORD PUZZLE

Astronomy

N	U	M	R	V	S	U	R	Y	M	A	R	S	N
W	O	W	C	O	R	I	N	U	S	R	T	N	A
H	M	A	I	O	A	N	R	A	E	I	O	S	
I	S	B	E	D	M	H	I	E	E	N	R	I	T
T	A	L	F	F	N	E	B	U	L	A	G	R	E
E	T	A	P	C	L	E	T	C	O	E	O	O	R
D	U	C	E	M	E	R	C	U	R	Y	R	R	O
W	R	K	T	N	A	I	G	R	E	P	U	S	I
A	N	D	E	N	U	T	P	E	N	C	T	E	D
R	S	W	E	X	O	P	L	A	N	E	T	N	N
F	X	A	O	T	U	L	P	R	O	B	L	T	A
D	R	R	H	T	R	A	E	N	O	U	O	E	E
P	P	F	R	O	E	T	E	M	M	U	N	W	O
O	L	U	H	T	A	V	O	N	R	E	P	U	S

MOON
PLUTO
COMET
ERIS
MERCURY
METEOR
ASTEROID
LEO
SATURN
MARS
WHITE DWARF
SUPERGIANT
SUPERNOVA
NEPTUNE
BLACK DWARF
SUN
EXOPLANET
NEBULA
ORION
EARTH

the Elling House ARTS & HUMANITIES CENTER

presents

Growling Old Men IN CONCERT



The Growling Old Men don't consider themselves old, nor do they growl very much. What they do is play acoustic music on mandolin, guitar, octave mandolin and vocals. Playing an eclectic mix of music including bluegrass, Americana, folk, swing, and original songs, these guys have made fans of their music everywhere they go.

The Growling Old Men really enjoy playing music together. Ben Winship (mandolin & vocals) and John Lowell (guitar & vocals) are both veterans of the Northern Rockies' acoustic music world and have been performing and recording together since 1998. Together the duo presents a tight, yet relaxed set of original and traditional bluegrass songs, ballads and tunes - informed equally by the music of the Appalachian hills and the western plains.

In concert the Growling Old Men are engaging and spontaneous as they make a big sound for two guys. Their shows include a blend of well-rehearsed material and few new songs hot off the press - they like to walk the edge of improvisational risk taking. The duo strives to contrast simplicity with complexity; all with good tone and a warm sense of humor.

FRIDAY AT 7PM

June 28th

ADMISSION IS \$15 PER PERSON - RESERVATIONS RECOMMENDED
Tickets purchased at the door or reserved in advance by calling 406-843-5454

404 E. IDAHO ST VIRGINIA CITY, MONTANA
406.843.5454 406.843.5507 WWW.ELLINGHOUSE.ORG

The RVCD Is Looking For Feedback; Complete This Survey!

- Help Us Design Our New Long-Range Strategic Plan By Gracing Us With Your Feedback and Perspective On Our Organization!
- What goals should we focus on? How much do you know about our events and programs? How Can We Improve?

Incorporate/
Expand On Your
Programs!

Add More
Education
Opportunities!

Increase The
RVCD's staff
capacity!

Implement
Restoration
Projects At New
Sites!

Give
Everyone Free
Puppies!*

*Please do not suggest that we give everyone free puppies. We are not capable of that.



ALDER EAGLETS CHILDCARE

MONDAY-
THURSDAY

7:30 AM-
5:30PM

ACCEPTING
AGES 2+



Summer Spots &
Permanent Spots

• Fulltime
• Part time
• Drop-Ins

GET YOUR CHILD(REN) ENROLLED TODAY!

SKIELA- (406) 531-0084
SAVANNAH- (406) 865-0416



Madison County Nursing Homes Foundation, in support of the Tobacco Root Mountains Care Center in Sheridan and the Madison Valley Manor in Ennis, wishes you health, happiness and peace during this holiday season and throughout the coming year. Thank you for your ongoing support.

Board of Directors

Charity Fechter, President - Melinda Merrill, Vice President
 Joanne Galiger - Mary Ragsdale - Paul Kramer - Paul Marsh
 Sammi Christensen - INA Accounting, Ancillary Services

"How far you go in life depends on your being tender with the young, compassionate with the aged, sympathetic with the striving and tolerant of the weak and strong, because someday in your life you will have been all of these."
 - George Washington Carver



Gary T. Caprara
 DESIGN - INSTALLATION - SALES
 (406) 580-1574 - FAX (406) 458-0138
 lonemountain70@yahoo.com
 www.crestwoodinc.com www.canyoncreek.com

Pints for Pups
 Saturday, June 17th
 3pm to 7pm



at Ruby Valley Brew



\$1 of every pint sold will be donated from RVB and matched by Resolute Roots Realty for the Beaverhead Animal Shelter



ROCKIN'S
 BUSINESS SERVICES LLC
 PO Box 156 Sheridan MT 59749
 406-682-7769 406-842-7778
 Cell: 406-581-3818 Fax: 406-281-7242
 Melody@rockinstax.com WWW.Rockinstax.com

HEALING WATERS
 Lodge
 TWIN BRIDGES, MONTANA
 Mike & Laura Geary, Owners
 270 Tuke Lane - Twin Bridges, Montana
 Office: 406-684-5960
 Mike's Cell: 406-459-2030 Laura's Cell: 406-459-5582
 www.hwllodge.com hwllodgemt@gmail.com

Resolute Roots
 REALTY
 Dawn Marie Buttrey
 Broker/Owner
 406-600-4802
 ResoluteRoots406@gmail.com

SUDOKU PUZZLE

				4				1
7				3	6	5		2
2	8			5				
				8				
		2						
			5		7	3		
3				7		6		
		8	1					3
	4	5	6				8	

ANSWERS FROM LAST ISSUE

9	5	2	3	8	4	7	6	1
6	4	7	2	5	1	3	9	8
3	1	8	6	9	7	5	4	2
5	3	4	9	6	8	2	1	7
2	8	6	7	1	3	4	5	9
1	7	9	4	2	5	8	3	6
7	6	5	8	3	9	1	2	4
4	2	1	5	7	6	9	8	3
8	9	3	1	4	2	6	7	5

PEW
 PERFORMANCE FAB
 WORX
 ANDREW BRAACH
 CUSTOM WELDING
 CNC PLASMA CUTTING
 SIGNS
 MOBILE REPAIR
 AUTOMOTIVE REPAIR
 CUSTOMIZATION
 DIFFERENTIAL REBUILD
 406-498-0471
 P.O. Box 393
 TWIN BRIDGES, MT 59754
 PERFORMANCEFABWORX@GMAIL.COM

KINNEY
 CLEANING SERVICE

 CHIMNEY - VENTS - WINDOWS
 DRYER VENT CLEANING - DUCT CLEANING
 ENJOY CLEANER AIR!
 GARY KINNEY
 406-702-5372
 CELL: 406-596-7003
 P.O. BOX 305
 VIRGINIA CITY, MT 59755

GRAHAM DRILLING
 SHERIDAN, MT

 Water Well Drilling,
 Pump Sales
 Installation,
 Service &
 Repairs.
 Phone: (406) 842-5214
 GRAHAMDRILLING.COM

Tobacco Root
Mountains Care
Center
 Phone: (406) 842-5600
 Fax: (406) 842-5419
 326 Madison
 P.O. Box 308
 Sheridan, MT 59749

ALLHANDS AUTO
CLINIC, LLC
 3565 Hwy 287
 SHERIDAN, MT 59749
406-842-7155
 FULL SERVICE DIAGNOSTIC AND REPAIR CLINIC
 M-F 7:30AM TO 5:00PM
 ROBERT ALLHANDS, OWNER 406-596-0502
 BRADLEY ALLHANDS, OWNER 406-596-5040

Ruby Valley Sheds
DANIEL & LEONA LEE
179 JUDY LANE - ALDER, MT
CELL: 406-217-2131
HOME: 406-842-5206

TB Auto Parts

 104 N MAIN ST.
 PO BOX 434
 TWIN BRIDGES, MT 59754
 PHONE: 406-684-5739
 FAX: 406-684-5377
 tb_auto@yahoo.com

8TH ANNUAL FUNDRAISING WEEKEND
 For the American Cancer Society
June 9th & 10th, 2023
SILENT AUCTION
 ITEMS DISPLAYED IN THE LOBBY OF OPPORTUNITY BANK UNTIL JUNE 30TH
SIDEWALK SALE
 (IN FRONT OF RUBY VALLEY RE-RUNS)
 JUNE 9TH

BBQ
 @ THE OPPORTUNITY BANK PARK
 JUNE 9TH 11 - 1
Ruby Valley Fun/Walk Run
 JUNE 10TH STARTS @ 9 AM
 AT THE BASEBALL FIELD. 5K AROUND SHERIDAN.
 APPLICATIONS AT THE BANK & ALSO ONLINE
 DONATIONS ARE WELCOME.
 PLEASE CONTACT EITHER
ROBIN BIEROTH @ 406-596-1201 OR ERIN ROSSITER @ 406-491-7913





Schedule of Events

- 7:30 a.m. Pancake Breakfast
- 8-10 Young Eagle Ridges
- 9 a.m Car Registration
- 10:30 a.m. Games for Pilots
- 11:30 a.m. Ping Pong Ball Drop
- 12:30 p.m. Free BBQ Lunch

Gifts
 Peoples Choice Awards
 1ST-3RD PLACE CASH PRIZES

TWIN BRIDGES FLY-IN & CRUISE
 75 AIRPORT RD
 TWIN BRIDGES MT
 KRVF
JUNE 17, 2023
 WWW.RUBYVALLEYAVIATION.COM

Community Events
June/July 2023

Sun	Mon	Tues	Wed	Thurs	Fri	Sat
		6 Music Trivia @ Lu's Lost Cabin Bar in Twin Bridges 7pm Dart night @ RV Brew 6pm	7 Ruby Valley Brew – Trivia Night 6:00pm Twin Bridges Food Pantry 10am-3pm	8	9	10 Ruby Valley Fun Run – 8am @ Sheridan Baseball Field
11	12	13 Music Trivia @ Lu's Lost Cabin Bar in Twin Bridges 7pm Dart night @ RV Brew 6pm	14 Ruby Valley Brew – Trivia Night 6:00pm Twin Bridges Food Pantry 10am-3pm	15 	16	17 Twin Bridges Fly-In & Cruise @ Airport – 7:30 am
18	19	20 Music Trivia @ Lu's Lost Cabin Bar in Twin Bridges 7pm Dart night @ RV Brew 6pm	21 Ruby Valley Brew – Trivia Night 6:00pm Twin Bridges Food Pantry 10am-3pm	22	23	24
25	26	27 Music Trivia @ Lu's Lost Cabin Bar in Twin Bridges 7pm Dart night @ RV Brew 6pm	28 Ruby Valley Brew – Trivia Night 6:00pm Twin Bridges Food Pantry 10am-3pm	29	30	JULY 1st 
2	3	4 	5 Ruby Valley Brew – Trivia Night 6:00pm Twin Bridges Food Pantry 10am-3pm	6	7	8



Nicholette Picken
BROKER®
(406)698-0853
nicholette.picken@gmail.com

PENDING IN 4 DAYS!



332 Wisconsin Creek Rd, Sheridan

2 BD | 2 BA | 2,560 SF | \$695,000

Peaceful country living awaits you at this loved and meticulously maintained property up Wisconsin Creek Rd at the base of the Tobacco Root Mountains. The one owner custom home offers all the essentials on the main level including a bedroom, bathroom, laundry room, kitchen, dining and living room. The upstairs loft bedroom area is spacious and could also serve as a den or office.

**BERKSHIRE
HATHAWAY
HOMESERVICES**

MONTANA PROPERTIES

118 S. Main St. Sheridan, MT 59749

©2023 BHH Affiliates, LLC. Real Estate Brokerage Services are offered through the network member franchisees of BHH Affiliates, LLC. Most franchisees are independently owned and operated. Berkshire Hathaway HomeServices and the Berkshire Hathaway HomeServices symbol are registered service marks of Columbia Insurance Company, a Berkshire Hathaway affiliate. Information not verified or guaranteed. If your property is currently listed with a Broker, this is not intended as a solicitation. Equal Housing Opportunity.



NICHOLETTE PICKEN

Broker

406.698.0853





Laboratory community **HEALTH FAIR**

*"Providing
reliable,
timely, and
cost-effective
laboratory services
for the
community"*

- ✔ Comprehensive metabolic panel* **\$50**
- ✔ Basic metabolic panel* **\$20**
- ✔ Lipid panel* **\$20**
- ✔ Uric acid **\$5**
- ✔ TSH - Thyroid Stimulating Hormone **\$30**
- ✔ PSA - Prostate Specific Antigen **\$40**
- ✔ Complete Blood Count **\$20**
- ✔ Hemoglobin A1C **\$20**

June 1-30
weekdays
7 am - 12 pm

No Appointment Needed
Check in at Registration

*Patient must be fasting (8-12 hours preferred) with water only, no tea or coffee, and must not consume alcohol for 24 hours before the specimen is drawn.

Payment is due at the time of service | No insurance billing
Cash or credit cards accepted | Please make checks payable
to **Ruby Valley Medical Center.**



For more info, please call: **(406) 842-5453**



Meet

Sunny Harmon

THE CABINET STOP CABINETS & COUNTER TOPS

Locally owned and operated.

Serving SW Montana.

Offering free 3D layout and quote.

No job too big or small!



For more information call
Sunny Harmon at: 406-925-0647
Jordan Harmon at: 406-925-0615
Gary Caprara at: 406-580-1574