

JULY 27-30

Sheridan Days 2023

UNDER THE SEA

THURSDAY JULY 27
6:00 - CAR CRUISE IN @ RVB

FRIDAY JULY 28
 @ RAY SILVE MEMORIAL BASEBALL PARK
6:00 - DINNER & BEER GARDENS - SCCF
LIVE MUSIC - WINNIE BRAVE

SATURDAY JULY 29
8:00 AM - FUN RUN
10:00 - PARADE
11:00 - DODGEBALL
12:00 - LUNCH BY FIRE DEPARTMENT
KIDS ACTIVITIES & VENDORS
1:00 - HORSESHOES
3:00 - CORNHOLE
5:00 - DUCK RACES

SUNDAY JULY 30
6:00 - DINNER - SAR & BEER GARDENS - SCCF
LIVE MUSIC - DAN HENRY
10:00 - 12:00 - JACKSONS GARDEN
BRUNCH, CHURCH SERVICE & SILENT AUCTION

3 RIVERS COMMUNICATIONS

Internet Phone

406-467-2535
 800-796-4567
 3rivers.net

BERKSHIRE HATHAWAY
 HomeServices
 Montana Properties

Frank Colwell
 Broker
 32 years serving
 Montana
 Real Estate Needs
 406.596.1076

Dusk at Disco Park

An evening of free music at Discovery-Ellingsen Park, Virginia City

7pm - 9pm
 rain or shine byob byof

FRIDAYS
June 30 The Dirty Shame
July 28 Paige And The Peoples Band
Aug 25 Fools Gold

Made possible by
 3-7-77 Productions • Engel & Völkers - Lincoln & Lisa Roberts • 3 Rivers Communications
 Virginia City Area Chamber of Commerce • Pioneer Bar • Skip & Jody Hissong
 Body Dynamics Pilates • Bob's Place • Madison Valley Heating & Cooling
 Double M Business Services • VICE • Montana Heritage Commission
 Discovery-Ellingsen Park • 9 Grant Mine Road • Virginia City, MT

Spiffy Biffy Portable Toilets Inc.

Gary & Heather Caprara

PHONE: 406-596-0593
 406-580-1574
 spiffybiffypartables@gmail.com

McLeod Mercantile

"Your locally, family owned fuel distributor"

2 convenience store locations
 Norris & Sheridan
 Delivering fuel in Madison & Jefferson counties
 Main office: 685-3379
 Sheridan store: 842-5478
 Norris store: 685-3361

Alder Creek
 Coffee Roasters

117 North Main Unit D
 Sheridan, MT
 www.aldercreekcoffee.com
 Hours - 7 a.m. to 3 p.m.

THE SHACK

TWIN BRIDGES, MONTANA

Pizza..Burritos..Beer..Sandwiches..Burgers..Salad Bar..16 Flavors of Ice Cream

301 N. Main 406-684-5050

HOURS:
 Tuesdays through Sunday ~ 11 a.m. - 8 p.m.
 Call 406-684-5050 for Daily Specials

P's Clothes Closet & More

Located above the Twin Bridges Library

OPEN HOURS

MONDAY	10AM - 2PM
WEDNESDAY	9AM - 2PM
FRIDAY	10AM - 2PM
SATURDAY	10AM - 2PM

ALL items are FREE to the community! Mens, womens, and childrens clothing, toys, household items, sheets, towels, etc. Donations are greatly appreciated and can be dropped off during open hours or by appointment by calling P @ (406) 600-2983

JUNE 2023 - 2ND ISSUE

RUBY VALLEY NUGGET

Tobacco Root
Mountains Care
Center

Phone: (406) 842-5600
 Fax: (406) 842-5419

326 Madison
 P.O. Box 308
 Sheridan, MT 59749

GRAHAM DRILLING
 SHERIDAN, MT

Water Well Drilling,
 Pump Sales
 Installation,
 Service &
 Repairs.

Phone: (406) 842-5214
 GRAHAMDRILLING.COM

Madison Valley BANK

24 Hour ATM Locations:
 Harrison • Ennis • Virginia City
 Sheridan • Boulder • Montana City
 Bozeman • West Yellowstone

Since 1965
 Ennis | Boulder | Montana City
 Bozeman | West Yellowstone
 www.madisonvalleybank.com

ODYSSEY
 DEPENDABLE COMPUTER REPAIR

PC, MAC AND SERVER REPAIR,
 IT SUPPORT, BUSINESS
 SECURITY AND CAMERAS
 FOR HOME OR RANCH

WWW.COMPUTERSMT.COM
 (406) 992-4093

Twin Bridges Bluegrass Festival

June 28th - July 2nd

Madison County Fairgrounds, Twin Bridges, Montana

2 Fairgrounds Loop Rd

Kentucky Sky Low Water String Band Lochwood Montana Standard

Runaway Train 93 North

Dillon Junior Fiddlers Prairie Wildfire DeGroot Band The Music Batches

Three days of music:
 1-9 Fri, 12-9 Sat, and 10-3 Sun
 Gates open for early camping June 28th
 *12 great bands *Horseshoe tournament
 *Sewing and quilting room
 *Covered audience area

Food and craft vendors Trout filled river borders the fairground Indoor areas for night jamming

twinbridgesbluegrass.com

For more information call Gene Bach at 530-340-0214

BERKSHIRE HATHAWAY
 HOMESERVICES

MONTANA PROPERTIES

MIRANDA WHEELER, REALTOR
 406.640.1655
 miranda.wheeler@bhhsmt.com

LOST CABIN BAR

109 S. MAIN ST.
 TWIN BRIDGES, MT
 406-684-5482
 COLDEST BEER IN TOWN

PFW

PERFORMANCE FAB WORKX
 ANDREW BRAACH

CUSTOM WELDING
 CNC PLASMA CUTTING
 SIGNS
 MOBILE REPAIR
 AUTOMOTIVE REPAIR
 CUSTOMIZATION
 DIFFERENTIAL REBUILD

406-498-0471
 P.O. Box 393
 TWIN BRIDGES, MT 59754
 PERFORMANCEFABWORKX@GMAIL.COM

KINNEY
 CLEANING SERVICE

CHIMNEY - VENTS - WINDOWS
 DRYER VENT CLEANING - DUCT CLEANING
 ENJOY CLEANER AIR!
 GARY KINNEY
 406-702-5372
 CELL: 406-596-7003
 P.O. BOX 305
 VIRGINIA CITY, MT 59755

MOUNTAIN BUILDING CENTER

TWIN BRIDGES, MT
 (406) 684-5562

DIAMOND KOTE
 Building Products

Rollax

PUBLISHED BY BEACON BUSINESS CENTER ~ 406-842-7488

DESIGNED BY JOETTA WETZSTEON - CONTACT: RUBYVALLEYNUGGET@GMAIL.COM - WWW.BEACONBUSINESSCTR.COM

AUTHORIZED FEDEX & UPS SHIPPING CENTER SUPPLIES

HOME DECOR - TOYS - CRAFTS - PUZZLES - OFFICE SUPPLIES - COPY - FAX - GRAPHIC DESIGN - AND MORE...

RACE HORSES OF THE RUBY VALLEY



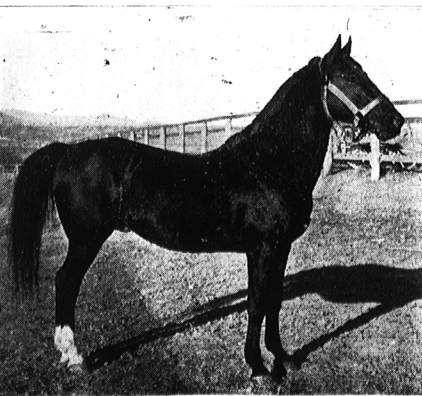
William Raymond

The history of Madison County pertaining to race horses was reported that residents owned many race horses in addition to breeding them. The Twin Bridges Southern Montana Fair Association advertised trotting, pacing and running races in 1898. By 1909 it was reported that Madison County was declared to have had the largest number of thoroughbred horses of any county in the state. It was also noted that the Fairgrounds had the finest mile track in the state of Montana with ample stables for horses.

Noah Armstrong, who owned the Doncaster Ranch and Spokane, was neither the first nor the most long standing horseman in the area. The round barn at the old Doncaster Ranch north of Twin Bridges is well known for it's rich history about the race horse, Spokane. Armstrong believed the altitude of Montana could produce horses with the lung capacity and endurance to be world class racers. Bunch grass grown in the area was said to said to

be superior to the Kentucky bluegrass for building stronger bones. Still standing today, the Doncaster Round Barn is a private run event center and is in the National Register of Historic Places.

In the 1880's round barns were promoted by agricultural colleges for efficiency and said to be cheaper to make. Armstrong liked it was wind resistance and had a self supporting roof. The Barn is one hundred feet in diameter at ground level and three stories tall with weather tight walls. The first floor had twenty-four box stalls and each with a window. The design gave "each horse a chance to see his neighbors for about halfway around the building...This promotion of neighborly companionship greatly relieved the monotony of indoor horse life." It had exterior doors that opened to a paddock for each horse, with fence lines fanning out over a total of 2.5 acres." Each stall used



to open up to an internal track about 20 feet wide. In the winter months the dirt corridor, about 220 feet in circumference, allowed the horse to be trained indoors. There was also a tack room, veterinary stalls, a circular staircase and a hay and grain elevator. At the core was a well pipe that drew water to an 11,000 gallon cistern on the third floor. A windmill on top of the barn pumped water from the well to the cistern, piped from there in to each stall. The second floor was a for feed storage. It was reported to hold up to 50 tons of hay and contain grain bins built to store 12,00 bushels. Sloped chutes about each stall allowed feed to be feed to the horses.

In this barn the mare, Interpose foaled a chestnut colt in 1886. Armstrong happened to be in Spokane Falls, Washington Territory and Armstrong decided to name him Spokane. He would tell the press after Spokane's 1899 win that the horse's name not only honored the community of Spokane Falls, but "secondly, because of an old Indian tradition of that locality that very much interested me."

In 1868 William Raymond and his brother Hillhouse Raymond bought ranch land in the Sweetwater Creek area that was known for a never freezing tributary of the Ruby River and what he called the "Animal's Paradise". The ranch consisted of nearly six thousand acres all under fence. In

1876, Hillhouse went to Kentucky and purchased a hundred head of the finest mares and a Standard bred stallion named Commodore Belmont. He also owned famous stud horses called Tempest,

Copper King and he would also bring the first Shetland ponies to Montana. In 1880 the stallion had sired a colt that Raymond would name Doncaster that became a star on Montana's trotting track and because of the name there was confusion amongst historians about the origin

of how Noah Armstrong came to name the ranch. Marcus Daly would later buy Doncaster and renamed him Dalgamo.

In 1880 Raymond build an affluent looking barn with ornate steeple style cupola with an organized interior tailored towards palatial horse barns found near Lexington, Kentucky. It also had a one mile training track. He would name his place Belmont Park for his favorite stallion and also in honor of a once famous race then held at Jerome Park, New York.

Raymond would own Belmont Park until his death in 1905 and he became one of the largest breeders of trotting horsed in the United States.

Another historic local breeder was Charles X. Larabie (Also spelled as Larrabee).

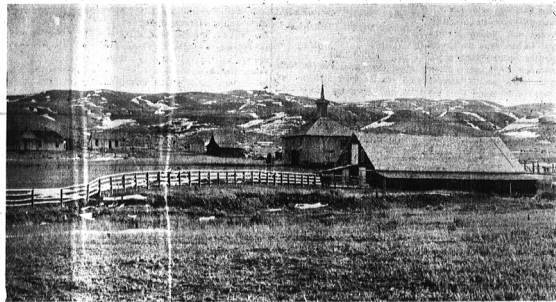
He was the co-founder of the Boston

& Montana Consolidated Mining Company and owned the Brook Nook Ranch. This place was in the upper Ruby Valley and consisted of 4,500 acres of land and by 1895 he put in \$250,000 to set up the ranch for well-bred trotting horsed and by 1895 he owned over two hundred of these horses. Larabie purchased Commodore Belmont from Raymond in 1891 and he would describe the aged stallion as "full of spirit, courage and virility as when he was a colt".

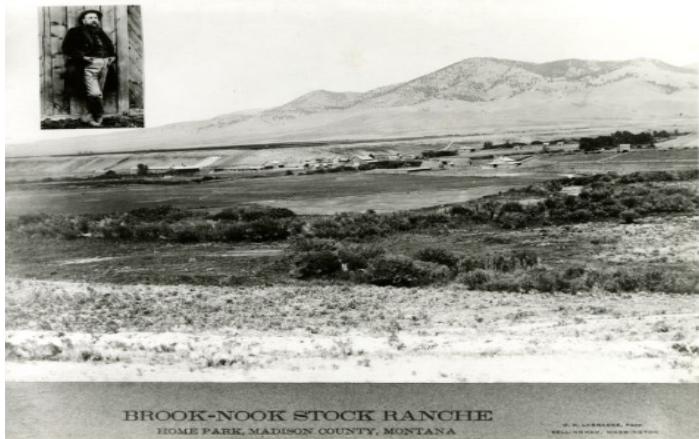
The tracks are now gone, and the horses are racing over the rainbow, but they still live on through our local history and in the horse breeders blood lines.



shot of Rothschild, Winner First Prize, Saddle Horses' Stallion Class, Montana Fair, October, 1903. Property of W. H. Raymond, Belmont Park Stock Farm.



Dirdeye View of Belmont Park Stock Farm, Property of W. H. Raymond.



Researched by Joetta Wetzsteon - Sources:
Montana Newspapers online source

RUBY VALLEY HAPPENINGS

TWIN BRIDGES FARMERS MARKET - Saturdays from June to September 9 am to 1 pm.

KIDS FISHING DERBY - June 24th at 10 am - Located at Lorie's Pond 2 miles out of Twin Bridges on Highway 41.

EVANS PAY IT FORWARD FUNDRAISER - June 25th from 3pm to 7pm at the Blue Anchor in twin. Dinner/Silent Auction/drinks to support Evans Cancer journey by paying it forward.

TWIN BRIDGES BLUEGRASS FESTIVAL - June 28th to July 2nd - The first annual Twin Bridges Bluegrass Festival, held in Twin Bridges, Montana, at the Madison County Fairgrounds. Gates open for camping at 0800 on Wednesday, June 28th, and you are welcome to stay through Monday morning, July 3rd. There will be 10+ bands playing music on Friday, Saturday and Sunday, food and craft vendors, a building for folks to set up in who would like to sew or quilt, and if we can get 20 people to sign up, there will be a horseshoe tournament on Saturday morning. Folks are highly encouraged to jam as much as possible, and there will be 2 buildings available as pickin' sheds for nighttime jams, should folks want to use them. If you like trout fishing, the Beaverhead River runs right along the edge of the fairgrounds, and town is located just across the river. The fairgrounds are located right off Hwy 41, and are 1/2 hour from Dillon and I15, 1 hour from Butte, and 1 1/2 hours away from Bozeman. This will be a wonderful family event, and we sure hope to see you there. More details about the venue, the bands, etc, are on the website. <https://twinbridgesbluegrass.com>

ELLING HOUSE EVENTS - Growling Old Men in Concert - June 28th at 7 pm - at 404 E. Idaho Street - Virginia City, Montana
DUSK AT DISCO PARK - 7-9pm - JUNE 30TH - DIRTY SHAME - JULY 28TH - PAGE AND THE PEOPLE BAND - AUG 25TH - FOOLS GOLD - At Discovery-Ellingsen Park, Virginia City

SHERIDAN FARMERS MARKET & MUSIC- July 6th through September 14th- Every Thursday from 5:30 to 7:30 pm - Main Street Park in Sheridan

FLOATING FLOTILLA RIVER PARADE - July 22nd at 11 am - Get your parade floats ready for the Floating Flotilla River Parade Saturday, July 22nd! Float line up is at 11:30AM, parade starts at 12:00PM!! 2022 Theme is TBD Best Float Awards:
Adults: \$200.00 Youth (17 and under): \$100.00 Duck Race to follow!

SHERIDAN DAYS - July 27th to July 30th - Under the Sea! Thursday 6 pm Car Cruise @ RVB, Friday @ 6 Dinner & Beer Gardens sponsored by SCCF with Live Music by Winnie Brave; Saturday @ 8am is the Fun Run, 10 am parade, 11 am Dodge ball, 12pm is lunch sponsored by Fire Department, Kids Activities & Vendors, 1pm Horseshoes, 3pm Corn hole, 5 pm Duck Races, 6 pm Dinner sponsored by SAR & Beer Gardens sponsored by SCCF with Live music by Dan Henry; Sunday 10 am to noon Jacksons Garden Brunch, Church Service & Silent Auction.

VIRGINIA CITY ELKS LODGE 390- Christmas in July - July 29th from Noon to 7 pm - 125Th Anniversary - August 18th - 3-10pm - August 19th - Noon - 7pm

TWIN BRIDGES FARMERS MARKET - Saturdays from June to September 9 am to 1 pm.

GRACE COMMUNITY FELLOWSHIP - Laurin, Mt, will begin Cowboy Church at the tent in Nevada City, MT. Services begin at 10am, June 4, 2023 through September 3, 2023. Everyone is welcome! If you have any questions call 406-842-5915.

P'S CLOTHES & MORE: Located above the Twin Bridges Library. Hours: Monday: 10-2 Wednesday: 9-2 Friday: 10-2 Saturday: 10-2 - All items are FREE to the community. Call P at 406-600-2983 to donate or for questions.

LOST CABIN BAR: Monday: Open Pool Table 5-7 - Tuesday: Music Trivia 6:30 - 8 - Wednesday: Whiskey Wednesday (Discount flights and tasters) - Thursday: First Thursday of Month Ladies Night - Friday: Red (Remember Everyone Deployed) Friday. Come in or call for details - Every Monday through Friday Happy Hour 5-6 - Check our FB page for weekend specials @lostcabinbar

PUBLIC LIBRARY EVENTS:

SHERIDAN - Newspaper History Group - Tuesday mornings @ 9 AM. Knitting Group - Thursdays @ 2 PM
CAREGIVER SUPPORT GROUP - First and third Tuesdays at 6 pm For more information call 406-842-7981.

TWIN BRIDGES - Thank you for everyone who filled out our survey! We are always working to make our library fit the needs of our community. Our five winners of the \$20 in Twin Bucks are: Anna Ingram, Rachelle Parsons, Betty Humbert, Lela Wendt, and Sheila Burke. Congratulations! Check in at the library for information about our summer reading program schedule. It looks to be a lot of fun! Don't forget Lego Club...There will be no meeting in May, but will pick up again in June!

TWIN BRIDGES HELPING HANDS: Twin Bridges-MT Helping Hand Food Pantry, we aim to End Hunger in Montana. We have moved to 208 1/2 S. Main St. Wednesday's. 10am to 3pm. Call for appointment any other day or time. We are here for you Madison County and neighboring towns. Pantry is open every Wednesday 11-2 or call for an appointment. Have on Hand canned fruits, vegetables, soups, sauces, jams, jellies, more. Boxed or bags of rice, beans, dinner helpers, pasta, dry milk, some meat. Toiletries. Adult pads/pull ups. Laundry items. Cleaning supplies. Dog, Cat food and Litter. If you don't see what you would like us to carry, please let us know. 596-1978 & 233-9616

RUBY VALLEY FOOD PANTRY: Food is distributed on Saturday mornings from 10-12 @ 206 S. Main in Sheridan, MT -between gas station and post office.

3 RIVERS WORSHIP CENTER: Worship is what we are all about and we would love to have you join us. Come as you are and be blessed. Every Sunday @ 10:30 am @ 3648 MT-287. Family friendly. Weekly Grief Support Group - Saturdays at 10 am and Mondays at 6 PM - for more information call 406-381-6677

If you have a event you would like us to help you promote, please let us know.
www.rubyvalleynugget@gmail.com

ENNIS HOME FURNISHINGS

MATTRESSES, APPLIANCES, FURNITURE, ELECTRONICS

ennishomefurnishings.com | Office: 406-882-3250 | 120 W Williams St
order@ennishomefurnishings.com | Fax: 406-882-3231 | Ennis, MT 59729

FOR ALL YOUR CONSTRUCTION, HARDWARE AND FARM/RANCH NEEDS!!!!

IMOC BUILDING SUPPLIES
SHERIDAN, MONTANA
406.842.5643

LUMBER - HARDWARE - FEEDS - LAWN/GARDEN - FARM/RANCH
WWW.IMOCBUILDINGSUPPLIES.COM

Banks Industrial Services LLC

Excavation, Water/Sewer, Hauling, Welding/Portable, Equipment Rentals
Equipment Repair, Pump Repair, Used Equipment Sales

David Banks
BISLLC@hotmail.com | 5 Rogers Road Silver Star, MT 59751
406-596-6049 | 406-684-5128

RENEGADE ELECTRIC

Adam Davis | Dereck Short

406.596.5281

renegadeelectric406@gmail.com

HARSHBARGER LAW FIRM

www.harshbargerlawfirm.com

Lori A. Harshbarger, Attorney
Kylee Gibson, Attorney
Hilary O. Betson, Attorney
Tai Goldin, Of Counsel

204 S. Main Street
P.O. Box 445
Twin Bridges, MT 59754

Phone: (406) 684-5001
Fax: (406) 684-5116

2022 has brought some exciting changes to our business! We have relocated our office to Twin Bridges. We look forward to helping you with your legal matters at our new location, by phone or via Zoom.

HANDYMAN TICE

Corey Theis 720-732-6506
PO Box 42 Cptice@yahoo.com
Sheridan, MT 59749 Free Estimates

Carpentry Flooring Drywall Sprinkler Systems Automotive Repair

NOVICH INSURANCE

novich@montanainsurance.net
P: (406) 684-5264 / F: (406) 684-5701
PO Box 394 / 104 W 4th Ave - Twin Bridges, MT 59754
Home - Auto - Farm/Ranch - Business - Work Comp

LINDA FOY | ATELIER

contemporary western landscape and nature art

SUMMER EVENTS!

JUNE GALLERY NIGHT
FRIDAY, JUNE 16TH, 4-7 PM

BAROQUE MUSIC MONTANA CONCERT
SUNDAY, JULY 16, 4 PM

Tickets: \$20 (suggested donation, limited seating) at:
<https://baroquemusicmontana.org/2022-23-season/>

Refreshments served at all events

104 S. Main St. Twin Bridges, MT
www.lindafoy.com

OPEN 7 DAYS A WEEK
8 A.M. - 9 P.M.

BLUE ANCHOR BAR & GRILL

DAILY SPECIALS
NIGHTLY SPECIALS

TWIN BRIDGES MT..
406-684-5655

CONTACT
596-7636 OR 539-4238

TB Auto Parts

104 N MAIN ST.
PO BOX 434
TWIN BRIDGES, MT 59754

PHONE: 406-684-5739
FAX: 406-684-5377
tb_auto@yahoo.com

MONDAY THROUGH FRIDAY
8 AM TO 5 PM

SATURDAY
9 AM TO 12 PM

HOME PARK ASSISTED LIVING

842-5133
homeparkassistedliving.com
504 RAY LANE
SHERIDAN, MONTANA

KENWORTHY ELECTRIC INC.

P.O. Box 56
Sheridan, MT.

Dan Kenworthy
Cell: 596-4100 (406) 842-5865 PH
(406) 842-7373 FAX
kenworthyelectric.com

FLOATING FLOTILLA FISH FANTASIES

Come join the fun in Twin Bridges
JULY 21ST & 22ND 2023

AT THE MADISON COUNTY FAIRGROUNDS

SCHEDULE OF EVENTS

Friday, July 21st:

4:00 pm: Cornhole Tournament & Axe Throwing at the Blue Anchor Bar
5:00 pm: Pasture Golf
Registration at the Madison County Fairgrounds Office
Fee: \$10 per player
6:00 pm: Tee Time
Prizes and Cash Awards!

Saturday, July 22nd:

9 am: Farmers Market at City Park
Walter "Lucky" Shular Horseshoe Tournament
11 am - 2 pm: Concessions
11:30 am: Floats Line-Up
2023 Theme: Cat vs Griz
12 Noon: Parade Begins - Duck Race to follow
1:00 pm: Cornhole Tournament at the Blue Anchor Bar
6 pm: Alumni Dinner

SPONSORED BY: TBCA, Rotary, United Veterans of TB, & The Greater Ruby Valley Chamber of Commerce & Ag

SHERIDAN FARMERS MARKET & LIVE MUSIC

JULY 6th - SEPTEMBER 14th

EVERY THURSDAY | 5:30PM to 7:30PM

Main Street Park
Sheridan

Live music, locally grown produce & Montana Made products.

If you are interested in being a vendor, please contact Janet Marsh at 406-596-1304

Thank you to Jim Kennedy of Trailsend Ranch for his support!

ALDER EAGLETS CHILDCARE

MONDAY-THURSDAY | 7:30 AM-5:30PM | ACCEPTING AGES 2+

Summer Spots & Permanent Spots | Fulltime Parttime Drop-Ins

GET YOUR CHILD(REN) ENROLLED TODAY!

SKIELA- (406) 531-0084
SAVANNAH- (406) 865-0416

Sheridan School District No. 5 is accepting applications for two Paraprofessional/teachers' aides positions for the 2023-24 school year (32 hrs/week, starting wage approx. \$14.35/hr.) Sheridan School District operates on a four-day school week. Benefits for hourly positions include state retirement, vacation, and sick leave. Information and applications are available on the district website at sheridan.k12.mt.us, or by contacting Becky Larsen (becky.larsen@sheridan.k12.mt.us) or Mike Wetherbee (mike.wetherbee@sheridan.k12.mt.us) or by calling 406-842-5302. All successful applicants must pass a federal fingerprint-based background check.



Do you care for someone with dementia, disability or chronic illness?

You Are Not Alone!

CAREGIVER SUPPORT GROUP

First and Third Tuesdays at 6pm
at the Sheridan Library
109 East Hamilton St, Sheridan
406-842-5770

The Caregiver Support Group provides emotional, educational and social support for the caregivers, family and friends of individuals with dementia, disability, or chronic illness.

GRIEF SUPPORT GROUP

Help and encouragement after the death of a spouse, child, family member, or friend.



WEEKLY GRIEF SUPPORT GROUP

When: Saturday - 10 AM
Monday - 6 PM

For Information Contact: 406-381-6677

Where: 3 RIVERS WORSHIP CENTER
3648 MT HWY 287
Sheridan, MT 59749



Free books delivered to your child age 0-5

Why Choose Books?

Register Your Child Here: 

Growing up with as little as 20 books at home has a significant impact on a child's literacy, math skills, higher education and job retention.

Now available in Madison County!

Questions?  406-682-7244  karenk@ennismontana.org  www.imaginationlibrary.org

LAST ISSUE ANSWERS

C	L	A	D		S	L	I	C	E		A	W	E	D	
R	O	D	E		T	I	R	O	S		N	O	S	E	
E	N	D	E		A	R	M	E	N	T		N	O	N	E
E	E	L		H	O	I	S	T		R	U	L	E	R	
P	R	E	S	E	N	T		A	L	I	A	S			
			H	A	G		T	I	E	C	L	A	S	P	
C	L	O	U	D		H	I	N	G	E		C	P	I	
L	O	U	T		P	Y	R	E	S		S	K	A	T	
O	P	T		H	Y	P	E	R		P	A	S	T	A	
G	E	S	T	U	R	E	S		D	A	M				
		M	I	N	E	R		B	E	N	E	A	T	H	
E	N	A	C	T		B	O	O	S	T		T	E	A	
C	O	R	K		C	O	R	R	E	S	P	O	N	D	
C	I	T	E		U	L	C	E	R		A	N	T	E	
E	R	S	T		B	E	A	S	T		L	E	S	S	

- ## ACROSS

 - Record company
 - Bounce back
 - Anagram of "Care"
 - Excuse
 - Fella
 - Murres
 - Approaches
 - Period of discounted prices
 - Wacky
 - Devastation
 - Small island
 - Distinctive flair
 - Ease up
 - Enclosed conduit
 - East southeast
 - Sweet potato
 - African sheep
 - Fair attraction
 - Absorbs written material
 - Wood eater
 - Nose hole
 - Consumer of food
 - Ego
 - Anagram of "Seen"
 - Fifty-two in Roman numerals
 - Ignited
 - Marsh plant
 - A behavioral syndrome
 - Affirm
 - Fiber source
 - Faded
 - Bicycle
 - Smile
 - Tally
 - IIII
 - Roof overhang
 - Not those
 - Anagram of "Sent"
 - Didn't dillydally
 - Affirmatives

CROSSWORD PUZZLE

1	2	3	4	5		6	7	8	9		10	11	12	13	
14						15					16				
17						18					19				
20						21					22				
					23					24	25				
26	27	28	29		30				31						
32					33			34		35		36	37	38	
39					40				41	42					
43							44	45				46			
				47		48		49				50			
51	52	53						54			55				
56						57	58					59	60	61	62
63						64					65				
66						67					68				
69						70					71				

- ## DOWN

- Territory
 - Away from the wind
 - Partiality
 - River in Spain
 - Fine thread
 - Raptures
 - Fettered
 - Angelic headgear
 - Candidly
 - Hearing measurement device
 - Uncouth
 - A shoulder firearm
 - Consumed
 - Ready for anything
 - Paddles
 - Day, month and year

- Component used as fertilizer
 - Abrupt
 - Being at the right time
 - Jazzed up
 - Rear end
 - Banquet
 - Sleigh
 - Colored part of the eye
 - Frequently
 - The absolute superlative
 - Pictures
 - Monastery head
 - Pee
 - Spoken for

- Out of practice
 - Snare
 - Dull pain
 - Foot digits
 - Celtic language
 - D D D

SUMMER RIVER AND POOL FLOATS NOW FOUND AT BEACON BUSINESS CENTER!



ALL NEW SUMMER FUN
ITEMS
IN STOCK!


Opportunity Bank
OF MONTANA
FIDC OPPORTUNITYBANK.COM

JTS
CONSTRUCTION LLC
TWIN BRIDGES, MT
406-925-0615
SPECIALIZING IN NEW HOME CONSTRUCTION
AND QUALITY REMODEL AND REPAIR


Trails End Land Company
Jim Kaatz
Broker/Owner
PO Box 645
101 S. Main Street Sheridan, MT 59749
Phone: 406-842-5960
Cell: 406-596-1060
Email: vigilant.jk@gmail.com

Picturing a new kitchen?



A Home Equity Line of Credit
is the affordable way to get things done.
And our friendly team makes it easy.

HighPeaksFCU.com

Sheridan
406-842-5372

Dillon
406-683-4373



Loans subject to approval. NMLS #695851 Federally insured by NCUA. HPF-09d.1

Ruby Valley Food Pantry

Open Saturdays 10-12 am
206 S. Main Street, Sheridan
Green building next to the Post Office



Neighbors helping
neighbors

Scan the QR
Code to donate


**Marsh's Mountain
Greenhouse**
Bedding Plants - Herbs - Vegetables
Perennials - Hanging Baskets
Paint your Garden with Plants!
NOW OPEN!
Sarris Marsh
52 Marsh Ln, Sheridan | 842-5971 | cell 596-1231

WORD PUZZLE

Types of candy

O	M	Y	O	E	P	U	C	E	S	E	E	R	J
S	A	F	S	T	C	S	D	A	E	H	R	I	A
R	R	F	U	A	A	L	A	R	I	T	C	Y	W
E	S	A	C	L	R	O	E	R	T	A	L	D	B
H	H	T	K	O	A	L	N	S	R	I	G	N	R
C	M	Y	E	C	M	L	M	S	A	K	U	A	A
N	A	F	R	O	E	I	R	R	M	S	M	C	K
A	L	F	S	H	L	P	E	O	S	B	E	N	E
R	L	A	O	C	H	O	R	C	O	A	D	O	R
Y	O	L	P	E	P	P	E	R	M	I	N	T	S
L	W	P	L	S	K	C	O	R	P	O	P	T	W
L	P	O	G	W	H	O	P	P	E	R	S	O	S
O	T	O	T	S	I	E	P	O	P	A	C	I	
J	C	H	I	N	E	S	E	C	A	N	D	Y	S

PEPPERMINT
LOLLIPOP
LAFFY TAFFY
POP ROCKS
CHINESE CANDY
JAW BRAKERS
MARSHMALLOW
AIR HEADS
SUCKERS
COTTON CANDY
CHOCOLATE
JOLLY RANCHERS
TOOTSIE POP
WHOPPERS
GUM
SMARTIES
CARAMEL
REESE CUP

the **Elling House**
ARTS & HUMANITIES CENTER

presents

Growling Old Men IN CONCERT



The Growling Old Men don't consider themselves old, nor do they growl very much. What they do is play acoustic music on mandolin, guitar, octave mandolin and vocals. Playing an eclectic mix of music including bluegrass, Americana, folk, swing, and original songs, these guys have made fans of their music everywhere they go.

The Growling Old Men really enjoy playing music together. Ben Winship (mandolin & vocals) and John Lowell (guitar & vocals) are both veterans of the Northern Rockies' acoustic music world and have been performing and recording together since 1998. Together the duo presents a tight, yet relaxed set of original and traditional bluegrass songs, ballads and tunes - informed equally by the music of the Appalachian hills and the western plains.

In concert the Growling Old Men are engaging and spontaneous as they make a big sound for two guys. Their shows include a blend of well-rehearsed material and few new songs hot off the press - they like to walk the edge of improvisational risk taking. The duo strives to contrast simplicity with complexity; all with good tone and a warm sense of humor.

FRIDAY AT 7PM

June 28th

ADMISSION IS \$15 PER PERSON - RESERVATIONS RECOMMENDED
Tickets purchased at the door or reserved in advance by calling 406-843-5454

404 E. IDAHO ST. VIRGINIA CITY, MONTANA
406.843.5454 406.843.5507 WWW.ELLINGHOUSE.ORG

KIDS FISHING DERBY



Hosted by The Veterans of Twin Bridges!

June 24th at 10 a.m.

Located at Lorie's Pond 2 miles out of Twin
Bridges on Hwy 41.

Open for ages 14 and Under!

Everyone that catches a fish will get a prize!

1. If you catch a fish you get a prize
2. Fishermen are divided into 2 groups which is then divided into BOYS AND GIRLS. The first group is 10 years old and younger, the second group is from 11 years old through 14 years old.
3. We have additional prizes for the LARGEST FISH caught by the boy and girl of each group.
4. In addition whoever catches the most fish will get a prize.

Prizes for all who catch a
fish. Fishing poles for the biggest fish.
Free Lunch for all
(Mom, Dad, Kids and others).

For more information contact
Joe Witherspoon at (406) 842-7722



BOYS BASKETBALL CAMP

GRADES:

Pre-k to 4th grade boys
5th grade to 8th grade boys

SCHEDULE: JULY 24-27

- 10 am - 12 : pre-k - 4th grade
- 1 pm - 4 pm : 5th grade - 8th grade

COST:

- Pre-k - 5th \$35
- 6th - 8th \$45

LOCATION:

Twin Bridges Gym

PLEASE FILL OUT AND RETURN A FORM!



Madison County Nursing Homes Foundation, in support of the Tobacco Root Mountains Care Center in Sheridan and the Madison Valley Manor in Ennis, wishes you health, happiness and peace during this holiday season and throughout the coming year. Thank you for your ongoing support.

Board of Directors

Charity Fechter, President - Melinda Merrill, Vice President
Joanne Galiger - Mary Ragsdale - Paul Kramer - Paul Marsh
Sammi Christensen - INA Accounting, Ancillary Services

"How far you go in life depends on your being tender with the young, compassionate with the aged, sympathetic with the striving and tolerant of the weak and strong, because someday in your life you will have been all of these."
- George Washington Carver



PO Box 156 Sheridan MT 59749
406-682-7769 406-842-7778
Cell: 406-581-3818 Fax: 406-281-7242
Melody@rockinstax.com WWW. Rockinstax.com



Mike & Laura Geary, Owners

270 Tuke Lane - Twin Bridges, Montana
Office: 406-684-5960
Mike's Cell: 406-459-2030 Laura's Cell: 406-459-5582
www.hwllodge.com hwllodgemt@gmail.com



Dawn Marie Buttrey

Broker/Owner
406-600-4802
ResoluteRoots406@gmail.com



A & E Lawn Care
(406) 683 6734
Lawn maintenance,
Tree pruning/removal
Servicing the Dillon, Twin Bridges,
Sheridan area.



RUBY VALLEY BREW
REMAIN UNTAMED

WE TIP OUR GLASS
TO THE WILDER ONES

111 S. MAIN - SHERIDAN, MT - 842-5977



Residential &
Commercial
Heating &
Air Conditioning

406-221-6677



Ruby Valley Campground
& Convenience Store
In Alder Is Now Open

- Propane Services
- Hot Coffee
- Basic Essentials
- Fishing Equipment
- Campsites Available

8 AM - 7 PM - All Week
406-842-5677

MOVING SALE

JULY 8TH

➔ **107 FLICK LANE SHERIDAN, MT** ⬅

7AM-3PM



Gary T. Caprara

DESIGN - INSTALLATION - SALES
(406) 580-1574 - FAX (406) 458-0138
lonemountain70@yahoo.com
www.crestwoodinc.com www.canyoncreek.com

PRAETORIAN

Praetorian Services
and Weed Management



Zach Hall

(406) 596-0245
praetorian_guard63@yahoo.com



FULL SERVICE DIAGNOSTIC AND REPAIR CLINIC
M-F 7:30AM to 5:00PM

ROBERT ALLHANDS, OWNER 406-596-0502
BRADLEY ALLHANDS, OWNER 406-596-5040

Ruby Valley Sheds

DANIEL & LEONA LEE

179 JUDY LANE - ALDER, M

CELL: 406-217-2131

HOME: 406-842-5206

SUDOKU PUZZLE

				4			1
7				3	6	5	2
2	8			5			
				8			
		2					
			5		7	3	
3				7		6	
		8	1				3
	4	5	6				8

ANSWERS FROM LAST ISSUE

5	6	3	2	9	4	8	7	1
7	1	9	8	3	6	5	4	2
2	8	4	7	5	1	9	3	6
1	5	7	3	8	2	4	6	9
8	3	2	4	6	9	7	1	5
4	9	6	5	1	7	3	2	8
3	2	1	9	7	8	6	5	4
6	7	8	1	4	5	2	9	3
9	4	5	6	2	3	1	8	7

EVAN'S PAY IT FORWARD SILENT AUCTION FUNDRAISER!

LOCATED AT BLUE ANCHOR, TWIN BRIDGES

JUNE 25, 3:00 PM - 7:00 PM

\$12 DINNER - RIBS, PULLED PORK, AND SALAD

CHOICES



100% DINNER PROCEEDS
AND 50% BAR PROCEEDS
WILL BE DONATED TO EVAN'S
FUNDRAISING EFFORT

SILENT AUCTION
ENDS AT
7:00

EVAN WAS DIAGNOSED WITH
B-CELL ACUTE LYMPHOBLASTIC
LEUKEMIA 09/15/2021

THE CABINET STOP CABINETS & COUNTER TOPS

Locally owned and operated.

Serving SW Montana.

Offering free 3D layout and quote.

No job too big or small!



For more information call
Sunny Harmon at: 406-925-0647
Jordan Harmon at: 406-925-0615
Gary Caprara at: 406-580-1574



Meet

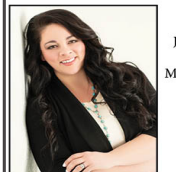
Sunny Harmon



Get 8 weeks of FREE
patches, gum or lozenges
SHIPPED STRAIGHT TO YOUR DOOR!



610 N Montana Street - Dillon, MT 59725
Office : 406-683-3635
Cell: 406-660-2440



Jessie Brooks
Licensed
Montana Realtor



TWIN BRIDGES MT FARMER'S MARKET

SATURDAYS, 9AM-1PM

JUNE - SEPTEMBER

MAIN STREET CITY PARK

CONTACT
COREE (406) 596-1978
JEN (406) 233-9616



Teen Safe Driving ROADeo

Madison County Fair Grounds

June 23, 2023

4 pm – 7 pm

For more information or to register contact:

Esther Lince

Preventionmc@swmtprevent.org

406-498-1215

Are you a teen driver, soon to be a driver or a parent of a teen about To get their license? THEN THIS EVENT IS FOR YOU!

- A free event that will give teens and parents the tools to become safe, careful drivers.
- Learn how to find your way under the hood and change a tire, information for parents on the most dangerous driving situations for teens.
- Emergency Roadside kit for each teen participant and drawing for a \$100.00, \$50.00, and \$25.00 gas card for parents
- Teens must be accompanied by parent or guardian



SPONSORED BY:



"This project is funded in part under a Contract with the Montana Department of Public Health and Human Services. The statements herein do not necessarily reflect the opinion of the Department."

Ruby Valley
Medical
Center

Laboratory community HEALTH FAIR

"Providing
reliable,
timely, and
cost-effective
laboratory services
for the
community"

- ✓ Comprehensive metabolic panel* \$50
- ✓ Basic metabolic panel* \$20
- ✓ Lipid panel* \$20
- ✓ Uric acid \$5
- ✓ TSH - Thyroid Stimulating Hormone \$30
- ✓ PSA - Prostate Specific Antigen \$40
- ✓ Complete Blood Count \$20
- ✓ Hemoglobin A1C \$20

*Patient must be fasting (8-12 hours preferred) with water only, no tea or coffee, and must not consume alcohol for 24 hours before the specimen is drawn.

Payment is due at the time of service | No insurance billing
Cash or credit cards accepted | Please make checks payable to **Ruby Valley Medical Center.**

June 1-30
weekdays
7 am - 12 pm

No Appointment Needed
Check in at Registration



For more info, please call: (406) 842-5453

Community Events

July 2023

Sun	Mon	Tues	Wed	Thurs	Fri	Sat
 JULY						1
2	3	4  INDEPENDENCE DAY	5 Ruby Valley Brew – Trivia Night 6:00pm Twin Bridges Food Pantry 10am-3pm	6 Sheridan Cruise- In on Main 6-8pm	7	8
9	10	11 Music Trivia @ Lu's Lost Cabin Bar in Twin Bridges 7pm Dart night @ RV Brew 6pm	12 Ruby Valley Brew – Trivia Night 6:00pm Twin Bridges Food Pantry 10am-3pm	13 Sheridan Cruise- In on Main 6-8pm	14	15
16	17	18 Music Trivia @ Lu's Lost Cabin Bar in Twin Bridges 7pm Dart night @ RV Brew 6pm	19 Ruby Valley Brew – Trivia Night 6:00pm Twin Bridges Food Pantry 10am-3pm	20 Sheridan Cruise- In on Main 6-8pm	21 Pasture Golf @ Fairgrounds 5pm	22 Floating Flotilla River Parade @ Fairgrounds 11am
23	24 	25 Music Trivia @ Lu's Lost Cabin Bar in Twin Bridges 7pm Dart night @ RV Brew 6pm	26 Ruby Valley Brew – Trivia Night 6:00pm Twin Bridges Food Pantry 10am-3pm	27 Sheridan Cruise- In on Main 6-8pm	28	29



Nicholette Picken
BROKER®
(406)698-0853
nicholette.picken@gmail.com

Home Improvements that are Less Likely to Increase Your Property Value

There are two ways your property can lose value – events that are beyond your control and factors within your control. You may not be able to do much about conditions that impact the market such as rising interest rates, job losses in your area, foreclosures or other negative changes in the neighborhood but you can do something about the condition of your property.

Three influences trigger homebuyers to purchase a home – location, price and condition. You can't change the location of your home, but you can make sure that repairs and improvements that you undertake will add value to your home.

Every year, Zonda Media releases the cost vs. value survey in partnership with the National Association of REALTORS®. This report details home renovations that will deliver the best return on investment and those that don't. As the results are derived from the opinions of survey participants, they're subjective, but they do indicate new trends and homebuyer preferences in the marketplace.

With a couple of exceptions, exterior improvements yield better results than interior updates and mid-range improvements add more value than high-end luxury renovations. Homebuyers get their first impressions of a home from how attractively and well-maintained the home is from the outside. This first impression primes them to either be more open and relaxed about what they find on the interior. A negative impression made by an overgrown yard, peeling paint, or old, outdated siding makes homebuyers more wary of what's inside and more likely to take a pass on the home or to make a low-ball offer. For that reason, many front entry details can be improved inexpensively and add significantly to the home's curb appeal. Among these would be fresh paint, a new welcome mat, new porch light fixtures and cheerful flowers planted in the yard or in pots flanking the entry. Otherwise, home improvements can range from the replacement of a single feature like a front door or garage door, to a full interior and exterior remodel.

Homebuyers love fresh, new looks in a home, but poor workmanship can bring down the ROI on any home improvement project. Do-it-yourselfers may understand that homeowners want updates, and to save money, these homeowners do all or much of the work themselves. If the results are amateurish, slipshod, or cheaply done, homebuyers will not be happy. Craftsmanship is essential to any home improvement project; home sellers will net bigger returns if they stick to what they know. Contact Nicholette for recommended do's & don'ts and more info on this subject.



Nicholette Picken
BROKER®
406.698.0853
nicholette.picken@gmail.com

CONTACT:

✉ NICHOLETTE.PICKEN@GMAIL.COM
📞 406-698-0853
💻 WWW.BHHSMT.COM

Wildflower Music Academy

GRAND OPENING *and* MEET AND GREET

SUNDAY JULY 9
6-8 PM

117 N MAIN ST SHERIDAN, MT

- * TOUR THE STUDIO *
- * SIGN UP FOR CLASS *
- * EAT * PLAY * VISIT *



Elks Lodge 390
Presents:
**Christmas
in July**

 Gourmet Treats
Handmade Crafts & Gifts
Christmas Inspired Food
and Drinks

July 29th Noon-7 PM

Questions: Call or Text Tanya
406-660-1559

Quilt show, July 1,
10 am to 4 pm.
Virginia city
community center,
free admission,
sponsored by
Patchwork Pals
Quilt Guild of the
Ruby Valley

FLOATING FLOTILLA FISH FANTASIES

Best
Float Awards
Adult: \$200 -
Youth (17 &
under): \$100

**COME JOIN THE FUN IN TWIN BRIDGES
JULY 21ST & 22ND 2023**

AT THE MADISON COUNTY FAIRGROUNDS

SCHEDULE OF EVENTS

Friday, July 21st:	Saturday, July 22nd:
4:00 pm: Cornhole Tournament & Axe Throwing at the Blue Anchor Bar	9 am: Farmers Market at City Park
5:00 pm: Pasture Golf	Walter "Lucky" Shular Horseshoe Tournament
Registration at the Madison County Fairgrounds Office	11 am - 2 pm: Concessions
Fee: \$10 per player	11:30 am: Floats Line-Up
6:00 pm: Tee Time	2023 Theme: Cat vs Griz
Prizes and Cash Awards!	12 Noon: Parade Begins - Duck Race to follow
	1:00 pm: Cornhole Tournament at the Blue Anchor Bar
	6 pm: Alumni Dinner

SPONSORED BY: TBCA, Rotary, United Veterans of TB, & The Greater Ruby Valley Chamber of Commerce & Ag

JIM SHIRK 2008