

THE RUBY VALLEY NUGGET



Fundraiser

for **Robert Ball**

All you can eat Taco/Nachos Bar, Silent Auction, Raffle Drawing, 50/50 Drawings and more!

Sunday, January 8, 2023
11:00 am - 2:00 pm

at **The Vault in Twin Bridges**

Raffle tickets \$10.00 each or 3 for \$25. Available at Womack's Printing-Dillon, Lu's Lost Cabin Bar-Twin Bridges, Main Street Market-Twin Bridges, Harshbarger Law Firm-Twin Bridges, or call Lori 406-596-5559. Need not be present to win!

Raffle Prizes Include

- ★ Fairmont Golf Package for 2 people includes 1 night stay, 18 holes, green fee and cart
- ★ 9' 5wt Air 2 Winston Rod
- ★ Bauer Fly Reel RVR 4/5 in Charcoal/Silver
- ★ \$500.00 Visa Gift Card

To donate an item for the Silent Auction, please call Verta 406-684-5505 or Victoria 310-871-1234.

Friends Helping Friends

Robert was diagnosed with colon cancer in January of 2022. After a year of surgeries, chemotherapy and other medical procedures he needs your financial help with continued treatment and outstanding medical bills.

Donations can be made to **The Robert Ball Medical Fund at Opportunity Bank**

DIAMOND KOTE Building Products
Rollex
TRAEGER

Dan Kenworthy (406) 842-5865 PH
Cell: 596-4100 (406) 842-7373 FAX
kenworthyelectric.com

NOVICH INSURANCE
novich@montanainurance.net
P: (406)684-5264 / F: (406)684-5701
PO Box 394 / 104 W 4th Ave - Twin Bridges, MT 59754
Home - Auto - Farm/Ranch - Business - Work Comp

CONSTRUCTION LLC
TWIN BRIDGES, MT
406-925-0615
SPECIALIZING IN NEW HOME CONSTRUCTION AND QUALITY REMODEL AND REPAIR

Banks Industrial Services LLC
Excavation, Water/Sewer, Hauling, Welding/Portable, Equipment Rentals
Equipment Repair, Pump Repair, Used Equipment Sales
David Banks
BISLLC@hotmail.com 5 Rogers Road Silver Star, MT 59751
406-596-6049
406-684-5128

OPEN HOURS
MONDAY 10AM - 2PM
WEDNESDAY 9AM - 2PM
FRIDAY 10AM - 2PM
SATURDAY 10AM - 2PM
ALL items are FREE to the community! Mens, womens, and childrens clothing, toys, household items, sheets, towels, etc. Donations are greatly appreciated and can be dropped off during open hours or by appointment by calling P @ (406) 600-2983

THE SHACK
TWIN BRIDGES, MONTANA
Pizza..Burritos..Beer..Sandwiches..Burgers..Salad Bar..16 Flavors of Ice Cream
301 N. Main 406-684-5050
WINTER HOURS:
Tuesdays through Sunday ~ 11 a.m. - 8 p.m.
Call 406-684-5050 for Daily Specials

Montana Properties
Frank Colwell
Broker
32 years serving Montana Real Estate

Water Well Drilling, Pump Sales
Installation, Service & Repairs.
Phone: (406) 842-5214
GRAHAMDRILLING.COM

109 S. MAIN ST.
TWIN BRIDGES, MT
406-684-5482
COLDEST BEER IN TOWN

Gary & Heather Caprara
PHONE: 406-596-0593
406-580-1574
spiffybiffyportables@gmail.com

117 North Main Unit D
Sheridan, MT
www.aldercreekcoffeeco.com
Hours - 7 a.m. to 3 p.m.

HAPPY NEW YEAR 2023
BEACON BUSINESS CENTER

We can't thank you enough for all the support you've showed us in 2022. We are looking forward to the privilege of serving you in the future.

ups BEACON BUSINESS CENTER & THE RUBY VALLEY NUGGET
203 S. MAIN - SHERIDAN, MT 59754
406-842-7548
www.beaconbusinessctr.com
FedEx Authorized ShipCenter

MARK UNRUH
Owner/Operator
406-925-2088
markunruh63@gmail.com
Dillon, MT
COMPLETE EXCAVATING
RANCH IRRIGATION
HOME SITE PREPARATION
PROFESSIONAL MASTICATING (MULCHER)
JUNIPER TREES - SAGEBRUSH - WILLOWS
HEAVY BRUSH

Residential & Commercial Heating & Air Conditioning
406-221-6677

Tobacco Root Mountains Care Center
Phone: (406) 842-5600
Fax: (406) 842-5419
326 Madison
P.O. Box 308
Sheridan, MT 59749

HANDYMAN TICE
Corey Tice - 720-732-6506
PO Box 42 Cptice30@yahoo.com
Sheridan, MT 59749 Free Estimates
Carpentry, Flooring, Drywall, Sprinkler Systems, Automotive Repair

Drawing of Jack Slade pouring coffee for Mark Twain.



JOSEPH "JACK" SLADE

Mark Twain, Buffalo Bill Cody, and Sir Richard Burton all wrote about Slade and his exploits. Many books and later short films.

Mark Twain wrote "Roughing It," which has to do with his experiences traveling across the west. He details his meeting with Jack Slade at the Julesburg Station when Slade's reputation was widely known as a mean and tough killer. He writes "In due time we rattled up to a stage station and sat down to breakfast with a have-savage, half-civilized company of armed and bearded mountaineers, ranch men and station employees. The most gentlemanly appearing, quiet and affable officer we have yet found along the road the road in the Overland company's service, was the person who sat at the head of the table, at my elbow. Never youth stared and shivered as I did when I heard them call him SLADE! Here was romance and I was sitting face to face with it! Looking upon, hobnobbing with it as it were! Here, right by my side, was the actual ogre who in

fight and brawls and various ways, had taken the lives of twenty-six human beings, or all men lied about him. I suppose I was the prudish stripling that ever traveled to see strange lands and wonderful people. He was so friendly and so gentle spoken that I warmed to him in spite of his awful history. It was hardly possible to realize that this pleasant person was the pitiful scourge of the outlaws." "The coffee ran out; at least it was reduced to one tin cupful, and Slade was about to take it when he saw that my cup was empty. He politely offered to fill it, I declined. I was afraid he had not killed anybody that morning and might be needing diversion. But, still with firm politeness he insisted on filling my cup and said I had traveled all night and deserved it more than he; and while he talked, he placidly poured the fluid to the last drop. I thanked him and drank it but it gave me no comfort, for I could not feel sure that he would not feel sorry presently, that he had given it away, and proceed to kill me to distract his thoughts from the loss. But nothing of the kind occurred. We left him with only 26 dead people to account for to the Rocky Mountain division..."

Captain Jack Slade would become a member of the vigilantes and helped them when he could, even though he couldn't help feel a certain contempt for them. When drinking he would talk about how they went after road agents only when they had a great advantage in numbers and he also didn't like watching the accused pulled from their beds or have a chance to defend themselves.

According to Colonel Sanders, a vigilante member and a one time Montana senator, that after breaking up the "road agents" in Virginia City a sort of Municipal Court for the punishment of miscreants was formed. Sanders would say "The vigilance committee met on the outskirts of Virginia City with an idea of a more lawful local government needed to be formed for the population that was then up to 10,000. They proceeded to choose from themselves sitting officials. They would turn to one of their members and say "You are a pretty square sort of fellow, and we know you to be as straight as a string, so you shall be judge." and to another, " you are a heavy built chap and have plenty of grit, you shall be marshal." For a time all went well, but after awhile there was less hangings, so it was thought the lawless element grew bolder and more aggressive.

Jack Slade's return from his freighting expedition to Milk River and back to Virginia City brought him popularity and he fell into drinking again. Bill Fairweather, one of the discoverers and owners of Alder Gulch, was one of his most intimate friend and companion. The sitting Judge at this time was Judge Alexander Davis and the Marshal was James Williams. Jack Slade would go into a saloon of around 50 men that would have been engaged in playing billiards, cards, etc. and insist that everything should stop at once and have a drink with him. Men would line up at the bar and order each person a drink. Jack Slade would then raise his glass to a toast and instead of drinking with them, he would wait until they had finished. Jack would then bring his glass level with his eye and intently stare at it. Suddenly he would dash the glass at the mirror behind the bar, the floor, barkeeper or anything that seemed to strike his fancy. Drawing his revolver, he would begin shooting indiscriminately until a "friend" would then have to calm him. Reportedly this happened most days he visited the saloons and usually not with deadly intent, he simply seemed to be seized with a mad passion which he could not control.

By 1864 he became the recognized leader of the rough and rowdy and had about a dozen friends always on hand to help him terrorize local vicinities. Once this group loaded up at a Virginia City Saloon and then proceeded to tear down random log houses close to the tavern. In the morning, the peaceful citizens woke up to piles of logs and upset homeowners demanding justice.

Now that the courts were organized, Mr. Slade and his friends were rounded up by the Marshal with instructions to arrest and bring them into court. In the beginning Jack Slade was peaceful very each time he was brought before the acting members of court. The fine would start out at \$25 which was cheerfully paid and off they went. Shortly after Slade and friends stood before the same court, only this time the fine would double, yet was paid with the same degree of cheerfulness. Then after one of their drinking binges and destruction the fine reached the sum of \$400. Slade did not have that much cash on him, so the courts allowed him to pay the fine at a later date. Before he paid that fine though, he was in trouble again.

On March 9th, 1864 the Marshal brought him into what was the court room. This room was a portion of a Virginia City grocery store where barrels of flour and bags of grain were scattered around the floor, bacon and ham was suspended from the rafters and soap boxes were used for chairs. Mr. Slade and his cohorts came in peacefully and all was well until the Marshal read the warrant and now a fine of \$700. Slade jerked the document from the Marshal and at the same time leveled a revolver towards the heart of the Judge. He wasn't alone in this action as the six men that were arrested with him did the same. Slade then said "Now, I am about tired of this business. I am not going to be drained anymore, and I am not going to recognize your authority, nor shall I pay that \$700. I shall hold you personally responsible for my personal safety, and if any of your committee attempt to touch me I will blow your hearts out." He turned and walked calmly out of the store.

Colonel Sanders was acting district attorney at this time and he followed Slade and his men out on to the streets of Virginia City and immediately found a former member of the vigilantes. Sanders explained the situation and instructed this man to ride the two miles to Nevada City and round up some men to bring Slade back into court. When Colonel Sanders turned to go back into the makeshift court room, he came face to face with Slade and his followers. Slade said "Come have a drink with me." Sanders said "Get on your horse and go home as fast as you can."



Painting of Slade

RUBY VALLEY HAPPENINGS

TWIN SPIRITS YOGA: Happy New Year from Twin Spirits Yoga. New year, same you, but growing! Yoga schedule for the first week of 2023 - Monday 6:00 P.M. - Tuesday 8:30 A.M. - Thursday 8:30 All levels welcome, bring a friend! Offering pranassage and private classes

SPICE CLASS- Just \$7 per spice and take it home in tupperware. You can choose one of the following: Barbeque - Italian Herb - Ranch - Seasoning Salt - Jan 9th at the Sheridan Senior Center - Jan 10th at the Twin Bridges Senior Center.

MAVRERICK MOUNTAIN SKI SCHOOL: If you would like to schedule lessons give me a call or text to get on the schedule. We are open everyday from December 17-January 1. Then Thursday-Sunday from January 5- March 26 Anna Rhodes 406-925-1772

P'S CLOTHES & MORE: Located above the Twin Bridges Library. Hours: Monday: 10-2 Wednesday: 9-2 Friday: 10-2 Saturday: 10-2 - All items are FREE to the community. Call P at 406-600-2983 to donate or for questions.

ZUMBA! 6:30 pm every Monday and Wednesdays above the Twin Bridges Fire Hall in Twin Bridges.

LOST CABIN BAR: Monday: Open Pool Table 5-7 - Tuesday: Music Trivia 6:30 - 8 - Wednesday: Whiskey Wednesday (Discount flights and tasters) - Thursday: First Thursday of Month Ladies Night - Friday: Red (Remember Everyone Deployed) Friday. Come in or call for details - Every Monday through Friday Happy Hour 5-6 - Check our FB page for weekend specials @lostcabinbar

PUBLIC LIBRARY EVENTS: SHERIDAN - Newspaper History Group - Tuesday mornings @ 9 AM. Knitting Group - Thursdays @ 2 PM. For more information call 406-842-7981. | TWIN BRIDGES - Fall Story Time is beginning! Story Time starts September 28th @ 10:30 am. We hope to see you there! While you are there, check out our new bathroom remodel, and see what books are new! | VIRGINIA CITY - Thompson Hickman - 10:30 a.m. Library Story and craft time.

TWIN BRIDGES HELPING HANDS: Twin Bridges-MT Helping Hand Food Pantry, we aim to End Hunger in Montana. We have moved to 208 1/2 S. Main St. Wednesday's. 10am to 3pm. Call for appointment any other day or time. We are here for you Madison County and neighboring towns. Pantry is open every Wednesday 11-2 or call for an appointment. Have on Hand canned fruits, vegetables, soups, sauces, jams, jellies, more. Boxed or bags of rice, beans, dinner helpers, pasta, dry milk, some meat. Toiletries. Adult pads/pull ups. Laundry items. Cleaning supplies. Dog, Cat food and Litter. If you don't see what you would like us to carry, please let us know. 596-1978 & 233-9616

MOUNTAINVIEW CHAPEL HIGH SCHOOL YOUTH GROUP: Every Wednesday @ 7 PM. 515 N. Main St., Twin Bridges. 406-684-5217

RUBY VALLEY FOOD PANTRY: Food is distributed on Saturday mornings from 10-12 @ 206 S. Main in Sheridan, MT -between gas station and post office.

3 RIVERS WORSHIP CENTER: Worship is what we are all about and we would love to have you join us. Come as you are and be blessed. Every Sunday @ 10:30 am @ 3648 MT-287. Family friendly.

If you have a event you would like us to help you promote, please let us know.
www.rubyvalleynugget@gmail.com

EH ENNIS HOME FURNISHINGS
FURNISHINGS
 MATTRESSES, APPLIANCES, FURNITURE, ELECTRONICS
 ennishomefurnishings.com | Office: 406-882-3250 | 120 W Williams St
 order@ennishomefurnishings.com | Fax: 406-882-3231 | Ennis, MT 59729

HARSHBARGER LAW FIRM
 www.harshbargerlawfirm.com
 Lori A. Harshbarger, Attorney
 Kylee Gibson, Attorney
 Hilary O. Betson, Attorney
 Tai Goldin, Of Counsel
 204 S. Main Street
 P.O. Box 445
 Twin Bridges, MT 59754
 Phone: (406) 684-5001
 Fax: (406) 684-5116
 2022 has brought some exciting changes to our business! We have relocated our office to Twin Bridges. We look forward to helping you with your legal matters at our new location, by phone or via Zoom.

ODYSSEY
 DEPENDABLE COMPUTER REPAIR
 PC, MAC AND SERVER REPAIR,
 IT SUPPORT, BUSINESS
 SECURITY AND CAMERAS
 FOR HOME OR RANCH
 WWW.COMPUTERSMT.COM
 (406) 992-4093

3 RIVERS COMMUNICATIONS
 406-467-2535
 800-796-4567
 3rivers.net

PERFORMANCE FAB WORX
 ANDREW BRAACH
 CUSTOM WELDING
 CNC PLASMA CUTTING
 SIGNS
 MOBILE REPAIR
 AUTOMOTIVE REPAIR
 CUSTOMIZATION
 DIFFERENTIAL REBUILD
 406-498-0471
 P.O. Box 393
 TWIN BRIDGES, MT 59754
 PERFORMANCEFABWORX@GMAIL.COM



Slade did not go home, but did get on his horse and in arrogance he rode up and down main street a few times and then dismounted and headed back into the court room. About 500 men, mostly miners from Nevada City, showed up and surrounded the Grocery Store. Slade was surprised and surrendered immediately.

The report told by Colonel Sanders describes that a vigilante member came to him and said "Mr. Sanders, the boys have about concluded that they won't be bothered with Slade any longer, and there is no place to keep him safely. They are going to hang him, whether the court wills it or not." Mr. Sanders then had a conversation with Judge Alexander Davis, Marshall James Williams and other acting court members about the fate of Jack Slade. It was decided that as Jack Slade was bound to hang, whether by their wishes or not, it was better to have him

executed by order of the court and thus preserve their hold on the community. They sentenced him to death for high treason for inciting others to rebellion and for himself seeking to overthrow the newly form of government. When Slade heard this news he wanted Colonel Sanders and the Judge to make a speech on his behalf. He begged for his life, then he begged for a delay in his execution until the arrival of his wife. They both declined to see him and the committee feared that the presence of his wife might result in an effort to rescue him and cause bloodshed. These men knew that Mrs. Slade had at a previous time saved her husband from the noose. Slade's life had been lawless, desperate and no road agent was more dreaded, yet he had friends from all walks of life. It was reported that a few of the men would have given all they possessed to save his life and some did weep as the march toward the scaffold started.

Slade was taken to Elephant Corral in Daylight Gulch, a tributary of Alder Gulch. He was placed on a barrel and hanged from the cross beam of the corral gate. In the meantime someone had rode to Slade's Toll House to inform Virginia Slade of her husbands hanging. She was too late to save him and when she arrived, most everyone present scattered not wanting to remain witness to her sorrow. She had her husband's body carefully moved to the second story of what was then the Virginia Hotel. (Today is now the O.K. Livery Stables) Jack was placed into a tin coffin and Virginia Slade had it filled with alcohol. His coffin was then stored at Slade's Toll House until his wife would try to take him back to his home town in Illinois. Virginia started her trip that spring and would only make it as far as Salt Lake City, UT where he was buried in a local cemetery.

Captain J. A. Slade was one of the most interesting characters of the Vigilante days, he was also the one member of the Vigilante committee to be hung by the Vigilantes.

In 1946 a completion of the Vigilante Trail was proposed by the Vigilance club of Virginia City. The Engineers from the state highway department had set up headquarters in Ennis to build a route for the Vigilante Highway No. 34 across the Tobacco Root Range to connect with Highway No. 1. in Madison Valley. There was a route called Buford Boulevard that was constructed as a federal aid project in 1921 that had numerous spirals, S curves, banks and hairpin turns. It was difficult and costly to care for in the winter. There was an organized effort to relocate the Vigilante Highway over what was then known as old Slade toll road. It was claimed to be a natural water route, as laid out by the early day road builders was said to be practically free from snow drifts year round. Old Slade Toll Road later became part of Highway 287 and is now on the Vigilante Trail.

We now travel on that old toll road that is rich in history from Captain J. A. Slade and the many pioneers before us.

Researched and written by Joetta Wetzsteon

Come to The 2023 Annual Elling House Chautauqua!
 A unique American experience.

The Elling House Arts and Humanities Center invites you to attend this year's winter Chautauqua on the third Saturday of January (21st), February (18th), March (18th) and April (15th). The monthly event begins at 6:30pm with a meet and greet. Performances will start at 7:30pm and end at 9:00pm.



Come, enjoy a fun evening of entertainment, intellectual or spiritual growth, and local culture. We are located at 404 East Idaho Street, Virginia City, Montana.

Participants can present one or two songs, or a 5-minute reading. Those wishing to be on stage should contact Toni James at (406) 843-5454 or email ranksmarc@yahoo.com to reserve their place in the spotlight.

STEPPING STONE MARKETING & WEB DESIGN
 mysteppingstonepro.com
 The Next Step For Your Organization
 Website Development, Graphic Design, Marketing & more...
 406-561-0249 | rachelstone77@gmail.com | Rachel Stone

Opportunity Bank OF MONTANA
 OPPORTUNITYBANK.COM

Twin Bridges Dental
 Embrace Yourself!
 Braces, Implants, Root Canals
 Full Service Dental Office
 303 N Main St
 Twin Bridges, MT 59754
 (406) 684-5080

Madison Valley BANK
 24 Hour ATM Locations:
 Harrison • Ennis • Virginia City
 Sheridan • Boulder • Montana City
 Bozeman • West Yellowstone
 Since 1965
 Ennis | Boulder | Montana City
 Bozeman | West Yellowstone
 www.madisonvalleybank.com

Madison County FAIRGROUNDS
 FAIR & RODEO
 August 10-14, 2022
 7UP | pepsi.
 6" Round Steel Pipe
 3" Steel Base
 Concrete Foundations.
 * Opposite Side of "PEPSI" Face.

THANK YOU TO HARRINGTON BOTTLING COMPANY FOR PROVIDING THE SIGN

Madison County Fairgrounds Improvement Foundation, Inc.
 "Preserving Our Western Heritage"
 P.O. Box 664 • Twin Bridges, MT 59754
 (406) 596-9696 • (406) 925-1724
 Madison County Fairgrounds Improvement Foundation, Inc.
 Thank you to all our donors and community members for your keen interest, dedication and support for The Madison County Fairgrounds Improvement Foundation's programs, services, renovation projects, and new construction projects for the Madison County Fairgrounds in Twin Bridges, Montana.
 Lydia Hutchison
 Thank You for Helping Us Build a Legacy for Future Generations!
 The Madison County Fairgrounds Improvement Foundation, Inc. is a public, non-profit charity, established in 2021. Our purpose is to provide donors and supporters with an opportunity to receive a tax-deductible donation contributions to support the Madison County Fairgrounds.

CLASSIFIEDS

HOME PARK ASSISTED LIVING
 504 Ray lane • Sheridan, MT 59749
 Phone (406) 842-5133 • Fax (406) 842-5651

EMPLOYMENT OPPORTUNITIES
PERSONAL CARE ASSISTANTS WANTED
 (SIGN ON BONUS)

We are currently seeking compassionate, dedicated and fun-loving individuals to join our team as a full-time and part-time Personal Care Assistant (PCA). We have multiple shifts available for full or part-time work, including daytime, evening, weekday and weekend shifts, with overnight opportunities available. Apply today and pick the schedule that works best for you!

*We offer a sign-on bonus, competitive wages along with benefits packages for qualifying employees.

**Home Park ALF maintains a drug-free work environment and offers of employment are contingent upon successfully completing and passing a background check.

Please apply at Home Park Assisted Living
Call Jason @ 406-980-1117

BUYING GUNS
 LOOKING FOR ALL TYPES OF FIREARMS.
 CALL TODAY
 FOR A FAIR AND COMPETITIVE OFFER.
 CALL: 406-596-3475

LMCH Construction & Building Materials
your home, from the outside in

Gary T. Caprara
 DESIGN - INSTALLATION - SALES
 (406) 580-1574 - FAX (406) 458-0138
 lonemountain70@yahoo.com
 www.crestwoodinc.com www.canyoncreek.com

HEALING WATERS Lodge
 TWIN BRIDGES, MONTANA

Mike & Laura Geary, Owners

270 Tuke Lane - Twin Bridges, Montana
 Office: 406-684-5960
 Mike's Cell: 406-459-2030 Laura's Cell: 406-459-5582
 www.hwllodge.com hwllodgemt@gmail.com


FIREWOOD BANK OF THE RUBY VALLEY
VOLUNTEERS NEEDED!
HELP OUT YOUR COMMUNITY



CUT - SPLIT - STACK FIREWOOD

FOR MORE INFORMATION CONTACT
842-7392

NOT EVERYONE TRAPPED BY ALCOHOL IS AN ALCOHOLIC



Families and friends are suffering too.

Do you worry about how much someone drinks?

Al-Anon and Alateen can help.


Al-Anon Family Groups
 Help and hope for families and friends of alcoholics

1-888-4AL-ANON • AL-ANON.ORG

QUIT LINE
 MONTANA TOBACCO
 1-800-QUIT-NOW

Get 8 weeks of FREE patches, gum or lozenges
 SHIPPED STRAIGHT TO YOUR DOOR!

OB/GYN Healthcare Coming to the Ruby Valley!
 Dr. Mark Garnaa, OB/GYN, and Jenevieve Bayless, MSN, CNM, will be providing women's healthcare at the Ruby Valley Medical Clinic in Sheridan on the first Tuesday of every month.



Please call (406) 723-2922 for an appointment.

Ruby Valley Medical Center
 Exceptional People. Exceptional Care
 The Ruby Valley Medical Center is an equal opportunity employer and provider.
 321 Madison Street Sheridan, Montana (406) 842-5453 www.RVMC.org

LAST ISSUE ANSWERS

A	R	R	A	Y	B	O	L	O	I	C	E	D	
L	O	I	R	E	U	R	I	A	N	A	V	E	
A	P	N	E	A	L	I	N	T	T	R	E	K	
R	E	G	A	R	D	L	E	S	S	O	G	R	E
S	E	I	N	E	P	L	O	Y	S				
N	O	P	E	C	O	T	E	R	I	E			
A	B	A	N	D	O	N	D	E	P	R	E	S	S
R	O	L	L	E	R	D	E	A	R	I	E		
D	E	M	I	C	U	P	F	U	R	N	A	C	E
S	O	M	A	T	I	C	T	S	K	S			
P	A	R	T	Y	N	O	T	E	D				
S	L	I	M	R	O	U	N	D	A	B	O	U	T
H	A	V	E	A	P	S	E	T	O	R	S	O	
A	M	E	N	I	L	L	S	E	M	B	E	R	
W	O	R	T	D	Y	E	S	S	A	S	S	Y	

ACROSS

1. If not
5. Double-reed woodwind
9. Begin
14. Wander
15. Whacks
16. Poison
17. Writes down quickly
19. Highly skilled
20. Part of a leg
21. Enter unlawfully
23. Beaming
25. Marine
28. Prompt
29. Not used
32. Alter
33. Bog
34. Shower alternative
35. Actors in a show
36. Holdup
38. Pang
39. Applications
40. Card with one symbol
41. Mommy
43. Crimson
44. Website address
45. Repair
46. Destitution
48. Delicate
50. Appear
54. Light wood
55. Humorists
57. Runs in neutral
58. Not odd
59. Distinctive flair
60. Cantankerous
61. Patch
62. Arid

CROSSWORD PUZZLE

1	2	3	4		5	6	7	8		9	10	11	12	13	
14					15					16					
17					18					19					
20						21				22					
			23		24										
25	26	27						28				29	30	31	
32							33				34				
35						36	37				38				
39						40				41	42				
43					44					45					
				46						47					
		48	49								50		51	52	53
54							55			56					
57							58					59			
60							61					62			

DOWN

- | | | |
|---------------------------|----------------------------|-------------------|
| 1. At one time (archaic) | 25. Come to pass | 52. Celebrity |
| 2. Lake (Scottish) | 26. Pursue | 53. Feudal worker |
| 3. Indian dress | 27. Alleviated | 54. Smidgen |
| 4. Anagram of "Streaming" | 29. Tortilla chip | 56. Hotel |
| 5. Sphere | 30. Aromatic solvent | |
| 6. Area around Latvia | 31. What place? | |
| 7. A drama set to music | 33. Cry of disgust | |
| 8. Colognes | 34. Energy storage devices | |
| 9. Mainstay | 37. Overshadowed | |
| 10. Tomorrow's yesterday | 42. Academy award | |
| 11. Chopping tools | 44. Apprehensive | |
| 12. Tears | 45. One who leases | |
| 13. Explosive | 46. Map within a map | |
| 18. Indian hemp | 47. Exotic jelly flavor | |
| 22. Stand-ins for actors | 48. Disappear gradually | |
| 24. Traditionalists | 49. Ailments | |
| | 51. Small island | |

CLASSIFIED AD FORMS LOCATED AT BEACON BUSINESS CENTER

To place an ad or to promote your event, please email us at rubbyvalleynugget@gmail.com or call us at 406-842-7488

BEACON BUSINESS CENTER



NOW CARRIES HOME DECOR & GIFTS!



- Additional Features:**
- Print Speeds up to 17ppm black/9.5ppm color*
 - Monitor ink usage with Page Gauge*
 - Print from and scan to popular cloud services directly from the 1.8" color display*
 - Auto two-sided printing
 - Borderless Printing
 - Wireless*, Wi-Fi Direct®, and USB connectivity



WE ALSO HAVE BROTHER PRINTERS IN STOCK

203 S. MAIN - SHERIDAN, MT

HOME PARK
HP
ASSISTED LIVING

842-5133
homeparkassistedliving.com
504 RAY LANE
SHERIDAN, MONTANA

KINNEY
CLEANING SERVICE

CHIMNEY - VENTS - WINDOWS
DRYER VENT CLEANING - DUCT CLEANING
ENJOY CLEANER AIR!
GARY KINNEY
406-702-5372
CELL: 406-596-7003
P.O. BOX 305
VIRGINIA CITY, MT 59755

RR Resolute Roots REALTY

Dawn Marie Buttrey
Broker/Owner
406-600-4802
ResoluteRoots406@gmail.com

ROCKIN'S
BUSINESS SERVICES LLC

PO Box 156 Sheridan MT 59749
406-682-7769 406-842-7778
Cell: 406-581-3818 Fax: 406-281-7242
Melody@rockinstax.com WWW. Rockinstax.com

OPEN 7 DAYS A WEEK
8 A.M. - 9 P.M.

BLUE ANCHOR DAILY SPECIALS

NIGHTLY SPECIALS TWIN BRIDGES MT., 406-684-5655

CONTACT
596-7636 OR 539-4238

BRUNCH AND BINGO

Sundays Jan. 8 - Mar. 26

AT Virginia City Elk's Lodge

Brunch \$10
Bingo \$5 for 3 cards

10-11 AM Brunch
11AM-12PM Bingo

GREAT FOOD AND FUN FOR ALL!

Questions - call Tanya @ 406-660-1559

FOR ALL YOUR CONSTRUCTION, HARDWARE AND FARM/RANCH NEEDS!!!

IMOC
BUILDING SUPPLIES
SHERIDAN, MONTANA
406.842.5643

LUMBER - HARDWARE - SEEDS - LAWN/GARDEN - FARM/RANCH
WWW.IMOCBUILDINGSUPPLIES.COM

Trails End Land Company
Jim Kaatz
Broker/Owner
PO Box 645
101 S. Main Street Sheridan, MT 59749
Phone: 406-842-5960
Cell: 406-596-1060
Email: vigilant.jk@gmail.com

HAPPY New Year 2023

FRONT PORCH TRADITIONS
will be closed starting December 25, 2022 through the New Year. We will be open Saturdays in January 11:00 - 5:30.

Rob or I would be happy to come open up for you Monday - Friday 9:00 - 4:00. We will be doing our yearly deep cleaning, revamping and of course taking pictures and posting so you can still order online through messaging @ Front Porch Traditions on Facebook, or call/text Katie @ 406-660-2303
Rob @ 406-596-2300

Please dont hesitate to make an appointment to come to the shop.

Thank you so much for your amazing support this year and years past. We are so estactic about what blessings God will bestow upon us in 2023. WE COULD NOT DO IT WITHOUT YOU!

118 1/2 SOUTH MAIN STREET SHERIDAN, MT 59749

SPICE CLASS

SHERIDAN -- JAN. 9
TWIN BRIDGES -- JAN 10

Just \$7 per spice & take it home in Tupperware!

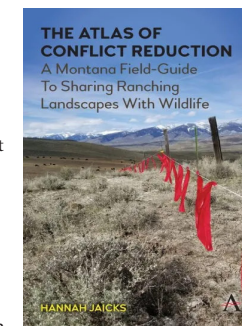
Choose 1 or all of the following to make:

- Barbeque
- Italian Herb
- Ranch
- Seasoning Salt

BEACON BUSINESS CENTER

WE CARRY BOOKS BY LOCAL AUTHORS
DANA S. HARVEY
AND NOW

HANNAH JAICKS
WITH HER NEW BOOK
THE ATLAS OF CONFLICT REDUCTION



Hannah Jaicks, who moved to Sheridan from Belgrade last spring with her boyfriend Mark and their dog Posey, recently published a book, The Atlas of Conflict Reduction: A Montana Field-Guide to Sharing Ranching Landscapes with Wildlife, about local ranching communities across southwestern Montana-- including the Ruby Valley.

Her book takes readers on a journey to a different valley in each chapter, and it highlights the firsthand stories of local producers and partner groups like the Ruby Habitat Foundation and Ruby Valley Strategic Alliance, to illustrate the critical role of ranchers and farmers in protecting the strength of our communities, the ecological integrity of the region, and the overall food supply chain we all depend on. Her book ties in concepts from her background in psychology to show how the broader public can work with ranching communities more effectively to collaboratively navigate some of the challenges and opportunities that wildlife present to ranching and farming operations. Her book is intended to celebrate the stories of Montana residents and inform others about how to best support them moving forward.

Illustrations by the talented Katie Shepherd Christiansen (Editor of The Artists' Field-Guide to Yellowstone) accompany the text. Pick up your copy at the Beacon Business Center or online (www.atlasofconflictredution.com).

As a lifelong knitter and co-owner of Bears Den Essentials, Hannah is committed to supporting her ranching and farming partners, and she loves buying yarn from them to knit up gifts when she's not behind her computer screen writing.

WORD PUZZLE

Dr. Seuss

A	U	Y	S	T	R	H	U	S	G	E	G	G	S
M	C	A	U	R	N	C	T	G	R	U	E	O	H
H	O	R	T	O	N	N	A	Y	L	O	O	L	Y
D	E	E	N	H	T	I	T	R	O	E	T	E	G
H	A	R	O	H	E	R	R	R	G	E	L	O	
S	S	H	H	S	N	G	U	E	A	E	H	Y	K
N	A	E	T	T	C	E	F	B	X	E	Y	O	T
N	M	M	H	L	H	H	F	L	O	A	O	T	H
A	H	O	R	C	S	T	U	U	S	S	O	A	G
G	T	N	H	W	T	E	L	M	A	N	M	G	G
G	W	H	L	A	H	E	A	L	L	W	Y	O	G
E	A	C	A	T	T	O	E	W	L	R	M	A	R
R	G	Y	F	R	L	O	U	N	Y	S	R	F	A

WHO
HAM
SAM
CAT
LORAX
MULBERRY
TRUFFULA
WACKY
SMOG
THNEED
SNEETCHES
THE GRINCH
HAT
EGGS
HORTON
SALLY

Picturing a new kitchen?



A Home Equity Line of Credit is the affordable way to get things done. And our friendly team makes it easy.

HighPeaksFCU.com

Sheridan 406-842-5372 Dillon 406-683-4373



Loans subject to approval. NMLS #695851 Federally insured by NCUA. HPF-099d.1

TWIN BRIDGES PUBLIC SCHOOLS January 2023

Sun	Mon	Tue	Wed	Thu	Fri	Sat
1 New Year's Day 	2 Staff lunch mtg Newsletter items due	3 MS GBB practice starts Noon Sophomore class mtg 6pm Booster Club mtg	4 Noon BPA mtg 3:45pm Falcon team mtg	5 Noon FFA mtg 2:30pm HS BB w/Boulder (H), GBGB	6 Noon Junior class mtg 3pm HS BB w/ Whitehall (T), GBGB	7 S/D/D/ meet in Townsend
8 CHRISTMAS BREAK New Year's Day	9 Noon Exec. Student Co. mtg	10 Noon Student Co. mtg 7pm REG BOARD MTG (MT rm) 	11 Noon 8th gr class mtg	12 Noon Close-Up mtg 2:30pm HS BB w/ Lone Peak (H), GB 4pm MS GBB w/ Sheridan (T) 7pm Am. Legion mtg (MT rm) 	13 End 2nd qtr/1st sem 	14 MS GBB w/ Harrison/WC (T) 2:30pm HS BB w/ Gardiner (T), GBGB
15 	16 Martin Luther King Day - No School 7pm Trailblazers 4-H mtg, Inchrn	17 Staff lunch mtg	18 Noon Safety cmttee mtg	19 Noon Freshman class mtg 2:30pm HS BB w/ Ennis (T), GBGB 6pm S/D/D Community Night (MT rm)	20 FFA LDE District Events (Three Forks) 2:30pm HS BB w/ WSS (T), GBGB 4pm MS GBB w/ Lima (H)	21 Divisional S/D/D, Columbus MS GBB w/ Sheridan (T)
22	23 2:30pm HS BB w/ Sheridan (T), GBGB 4pm MS GBB w/ Harrison/WC (T)	24	25	26	27 State S/D/D in 2:30pm HS BB w/ Man. Christian (T), GBGB	28 Manhattan FFA Fergus Mechanics CDE MS GBB Twin Bridges tourney
29 	30	31 				

print-a-calendar.com

Sheridan School Calendar

January 2023

January							February						
Su	Mo	Tu	We	Th	Fr	Sa	Su	Mo	Tu	We	Th	Fr	Sa
1	2	3	4	5	6	7	1	2	3	4	5	6	7
8	9	10	11	12	13	14	8	9	10	11	12	13	14
15	16	17	18	19	20	21	15	16	17	18	19	20	21
22	23	24	25	26	27	28	22	23	24	25	26	27	28
29	30	31					29	30	31				

Sunday	Monday	Tuesday	Wednesday	Thursday	Friday	Saturday
1/1 CHRISTMAS BREAK New Year's Day	2 New Year's Day (substitute)	3 MS GIRLS Basketball Practice 5	4	5	6 BASKETBALL @ Shields Valley HAVE SCHOOL	7 BASKETBALL vs. Gardiner MS GIRLS Basketball @ West Y Speech & Debate to Townsend
8	9	10 Board Meeting MS GIRLS Basketball vs. Ennis @ 7p Sheridan School Board Mee	11 WINTER SPORTS PICTURES	12 BASKETBALL @ Ennis MS GIRLS Basketball vs Twin Br	13 7:30a Speech & Debate to Huntley Project	14 BASKETBALL @ Lima MS GIRLS Basketball @ Harris
15	16 MS GIRLS Basketball vs. Harris Martin Luther King Jr. Day	17	18 SEMESTER TESTS	19 FFA KMON - Meats CDE - Great Falls	20 8a Speech & Debate Divisional @ Columbus	21 BASKETBALL @ West Yellowsto MS GIRLS Basketball Booster T
22	23	24 BASKETBALL vs. Twin Bridges	25	26 BASKETBALL vs. Lima MS GIRLS Basketball @ Ennis @	27 FFA Fergus Mechanics Speech & Debate State @ Manhattan	28
29	30 BASKETBALL vs. Butte	31 BASKETBALL vs. Harrison / Will	2/1 First Day of Black History Mont	2 MS GIRLS Basketball @ Twin B	3 BASKETBALL vs Manhattan Chr	4 BASKETBALL vs White Suplhur MS GIRLS Basketball @ White

Ruby Valley Sheds
DANIEL & LEONA LEE
179 JUDY LANE - ALDER, MT
CELL: 309-209-0662
HOME: 406-842-5206

ALLHANDS AUTO CLINIC, LLC
3565 Hwy 287
SHERIDAN, MT 59749
406-842-7155
FULL SERVICE DIAGNOSTIC AND REPAIR CLINIC
M-F 7:30AM TO 5:00PM
ROBERT ALLHANDS, OWNER 406-596-0502
BRADLEY ALLHANDS, OWNER 406-596-5040

SPC CONSTRUCTION LLC
Sean Phillips, General Contractor
New Homes, Additions, Log Structures, Rustic Styles, Chinking, Consulting
Home: 406-684-5509 Cell: 406-596-9403

McLeod Mercantile
"Your locally, family owned fuel distributor"
2 convenience store locations
Naris & Sheridan
Delivering fuel in Madison & Jefferson counties
Main office: 685-3379
Sheridan store: 842-5478
Norris store: 685-3361

RUBY VALLEY BREW
REMAIN UNTAMED
WE TIP OUR GLASS TO THE WILDER ONES
111 S. MAIN - SHERIDAN, MT - 842-5977

SUDOKU PUZZLE

		5	7	4			9
4				8			2
6	1	3		2			
1				7	4		
				1			
3	8				1		
		5			8		
7							2
		9					7

THE CABINET STOP
CABINETS & COUNTERTOPS
Locally owned and operated. Serving SW Montana. Offering free 3D layout and quote. For more information call Sunny Harmon at: **406-925-0647**
No job too big or small!

Meet Sunny Harmon

Alison's Pantry
CAROL & CANDY WILCOX
819 MIDDLE ROAD
TWIN BRIDGES, MT 59754
CAROL - 684-5142
CANDY - 599-5609

TB Auto Parts
104 N MAIN ST.
PO BOX 434
TWIN BRIDGES, MT 59754
PHONE: 406-684-5739
FAX: 406-684-5377
tb_auto@yahoo.com
MONDAY THROUGH FRIDAY 8 AM TO 5 PM
SATURDAY 9 AM TO 12 PM

MCNHF
MADISON COUNTY NURSING HOMES FOUNDATION

Madison County Nursing Homes Foundation, in support of the Tobacco Root Mountains Care Center in Sheridan and the Madison Valley Manor in Ennis, wishes you health, happiness and peace during this holiday season and throughout the coming year. Thank you for your ongoing support.

Board of Directors
Charity Fechter, President - Melinda Merrill, Vice President
Joanne Galiger - Mary Ragsdale - Paul Kramer - Paul Marsh
Sammi Christensen - INA Accounting, Ancillary Services

"How far you go in life depends on your being tender with the young, compassionate with the aged, sympathetic with the striving and tolerant of the weak and strong, because someday in your life you will have been all of these."
- George Washington Carver

ANSWERS FROM LAST ISSUE

2	3	7	6	9	4	8	1	5
6	5	8	1	3	7	2	9	4
4	9	1	2	5	8	6	3	7
8	6	3	9	7	5	4	2	1
5	7	4	8	1	2	3	6	9
9	1	2	3	4	6	5	7	8
1	8	9	4	2	3	7	5	6
3	4	5	7	6	1	9	8	2
7	2	6	5	8	9	1	4	3



BERKSHIRE HATHAWAY
HomeServices
Montana Properties

Community Events

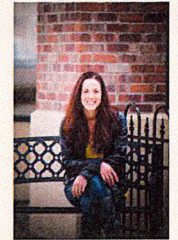
January 2023

Sun	Mon	Tues	Wed	Thurs	Fri	Sat
1 Happy New Year 2023	2	3 Music Trivia Night at Lu's Lost Cabin Bar in Twin Bridges 7pm	4 FFA S'more Cookout @ TBHS	5	6 Line Dancing @ the Vault (Lost Cabin) in TB 5:30pm	7
8 Fundraiser for Robert Ball @ The Vault – 11am	9	10 Music Trivia Night at Lu's Lost Cabin Bar in Twin Bridges 7pm	11 Ruby Valley Brew – Trivia <u>Night 6:00pm</u> Twin Bridges Food Pantry 10am-3pm next to Library	12 January	13 Line Dancing @ the Vault (Lost Cabin) in TB 5:30pm	14
15 Brunch & Bingo Virginia City Elks Lodge @ 10am	16 Martin Luther King Jr Day	17 Music Trivia Night at Lu's Lost Cabin Bar in Twin Bridges 7pm	18 Ruby Valley Brew – Trivia <u>Night 6:00pm</u> Twin Bridges Food Pantry 10am-3pm next to Library	19	20 Line Dancing @ the Vault (Lost Cabin) in TB 5:30pm	21
22 Brunch & Bingo Virginia City Elks Lodge @ 10am	23	24 Music Trivia Night at Lu's Lost Cabin Bar in Twin Bridges 7pm	25 Ruby Valley Brew – Trivia <u>Night 6:00pm</u> Twin Bridges Food Pantry 10am-3pm next to Library	26	27 Line Dancing @ the Vault (Lost Cabin) in TB 5:30pm	28
29 Brunch & Bingo Virginia City Elks Lodge @ 10am	30	31 Music Trivia Night at Lu's Lost Cabin Bar in Twin Bridges 7pm				



Nicholette Picken
BROKER®
406.698.0853
nicholette.picken@gmail.com

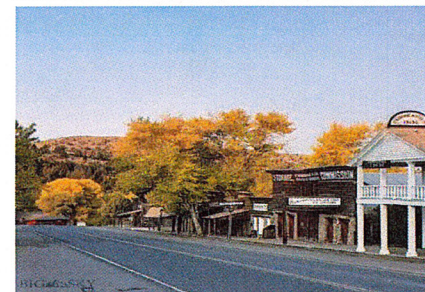
Commercial or Residential Opportunities



Nicholette Picken
Broker
406-698-0853
nicholette.picken@gmail.com
www.bhhsmt.com



\$42,000
MLS# 376736



Lot 17 W. Wallace St | Virginia City, MT

The "first and the last lot" in Virginia City MT. Located on the Main Street running through historic Virginia City, this lot offers load of potential with commercial or residential development opportunities. This town, located in the heart of SW Montana, is a sportsman's paradise. World class fishing, hunting, and more await you in the mountains surrounding this historic piece of the old west.



118 S. Main St. Sheridan, MT 59749

©2022 BHH Affiliates, LLC. Real Estate Brokerage Services are offered through the network member franchisees of BHH Affiliates, LLC. Most franchisees are independently owned and operated. Berkshire Hathaway HomeServices and the Berkshire Hathaway HomeServices symbol are registered service marks of Columbia Insurance Company, a Berkshire Hathaway affiliate. Information not verified or guaranteed. If your property is currently listed with a Broker, this is not intended as a solicitation. Equal Housing Opportunity.



BERKSHIRE HATHAWAY
HomeServices
Montana Properties

PROPERTY SPOTLIGHT

205 N Madison Street, Twin Bridges



HOUSE FOR SALE

OFFERED AT \$300,000

ABOUT THE PROPERTY

Centrally-located one block off of Main Street in Twin Bridges, this charming 3 BR/2 BA home is situated on 0.16± acres of mature lawn, lilac shrubs and other vegetation. The covered porch wraps around two sides providing additional great space to enjoy the outdoors. Master suite includes a walk-in closet and full bathroom with washer and dryer. The 2-car detached garage is insulated and has a separate room which could be used for a variety of purposes such as an office, gym or studio. New roofs in 2020. Plumbing and electricity were updated approximately 10 years ago.

3 BR / 2 BA 1,130 SF

0.16± acres

2-car detached garage, with bonus room

Electricity, city water, city sewer, natural gas



406-600-4802
ResoluteRoots406@gmail.com
ResoluteRoots406.com

CRITICAL INCIDENT STRESS MANAGEMENT

For more information:
Contact Jennifer Martens with
Madison County Emergency Management
at:
406-970-5950
Jennifer.martens@madisoncountymt.gov

Help us help those who help our community!

Complete CISM (Critical Incident Stress Management) training so you can be there during our First Responders' hardest times.

(Retired/Inactive First Responders, Family, Clergy, Chaplains, Federal, State and County Law Enforcement, Search and Rescue, EMS, Fire, Dispatch, Detention, Probation & Parole, Nurses, Ski Patrol, & Mental Health Professionals)

**JANUARY 31-FEBRUARY 2, 2023
8AM-5PM**

FREE TO MADISON COUNTY RESIDENTS
(Madison County DES is covering the fees.)
If you no-show you will be charged for the course.

24 CE/POST Hours for this course

Instructor: Carol Staben Burroughs

