

**Schedule of Events**

- 7:30 a.m. Pancake Breakfast
- 8-10 Young Eagle Ridges
- 9 a.m. Car Registration
- 10:30 a.m. Games for Pilots
- 11:30 a.m. Ping Pong Ball Drop
- 12:30 p.m. Free BBQ Lunch

**TWIN BRIDGES FLY-IN & CRUISE**

75 AIRPORT RD  
TWIN BRIDGES MT  
KRVF

**JUNE 17, 2023**

WWW.RUBYVALLEYAVIATION.COM

**Gifts**  
Ten Places  
Who Fly-In

**Peoples  
Choice  
Awards**  
1ST - 3RD PLACE  
CASH PRIZES

**A & E Lawn Care**  
(406) 683 6734  
Lawn maintenance,  
Tree pruning/removal  
Servicing the Dillon, Twin Bridges,  
Sheridan area.

**BERKSHIRE HATHAWAY** MONTANA PROPERTIES  
HOMESERVICES  
  
MIRANDA WHEELER, REALTOR  
406.640.1655  
miranda.wheeler@bhsm.com

**Banks Industrial Services LLC**  
Excavation, Water/Sewer, Hauling, Welding/Portable, Equipment Rentals  
Equipment Repair, Pump Repair, Used Equipment Sales  
David Banks  
BISLLC@hotmail.com  
406-596-6049  
406-684-5128  
5 Rogers Road Silver  
Star, MT 59751

**JTS**  
CONSTRUCTION LLC  
TWIN BRIDGES, MT  
**406-925-0615**  
SPECIALIZING IN NEW HOME CONSTRUCTION  
AND QUALITY REMODEL AND REPAIR

**THE SHACK**  
TWIN BRIDGES, MONTANA  
Pizza..Burritos..Beer..Sandwiches..Burgers..Salad Bar..16 Flavors of Ice Cream  
301 N. Main 406-684-5050  
WINTER HOURS:  
Tuesdays through Sunday ~ 11 a.m. - 8 p.m.  
Call 406-684-5050 for Daily Specials

**P's Clothes Closet & More**  
OPEN HOURS  
MONDAY 10AM - 2PM  
WEDNESDAY 9AM - 2PM  
FRIDAY 10AM - 2PM  
SATURDAY 10AM - 2PM  
ALL items are FREE to the community! Mens, womens, and childrens clothing, toys, household items, sheets, towels, etc. Donations are greatly appreciated and can be dropped off during open hours or by appointment by calling P @ (406) 600-2983

**COME OUT & HAVE A BURGER AT RIVERSIDE PARK BEFORE THE PONY BASEBALL GAME**  
GRILLING STARTS AT 5:30 PM ON FRIDAY MAY 19TH, 2023  
HAMBURGERS \$5.00  
BACON CHEESE BURGERS \$7.00

**1ST ANNUAL Sheridan Days DUCK RACES**  
RACE ONE \$100.00 per duck for a chance at a up to \$5,000 dollar pay out. Selling 100 ducks  
RACE TWO \$20.00 per duck for a chance at up to \$1,000, \$500 or \$250 dollar pay out for 1st, 2nd & 3rd places. Selling 300 ducks  
ALL PROCEEDS WILL GO TOWARDS NEW TOWN PARK EQUIPMENT  
LIMITED DUCKS AVAILABLE BUY BUY BUY  
WHILE WE HAVE THEM!  
HOW TO GET TICKETS  
Katie Holden, Kaylie Theis, Pete Rossiter, Sydnee Mailley, Britani Allhands  
Facebook Front Porch Traditions  
Send Checks to SCCF @ P.O. Box 435 Sheridan, MT  
RACE 5:00 PM SATURDAY JULY 29 @ RAY SILVE MEMORIAL BASEBALL PARK DURING SHERIDAN DAYS  
POTS are dependent on how many ducks are sold.

**KENWORTHY ELECTRIC INC.**  
P.O. Box 56  
Sheridan, MT.  
Dan Kenworthy (406) 842-5865 PH  
Cell: 596-4100 (406) 842-7373 FAX  
kenworthyelectric.com

**MONTANA LAND & LUXURY**  
610 N Montana Street - Dillon, MT 59725  
Office: 406-683-3635  
Cell: 406-660-2440  
Jessie Broksle  
Licensed Montana Realtor  
MLS

**LOST CABIN BAR**  
109 S. MAIN ST.  
TWIN BRIDGES, MT  
406-684-5482  
COLDEST BEER IN TOWN

**Alder Creek Coffee Roasters**  
117 North Main Unit D  
Sheridan, MT  
www.aldercreekcoffeeco.com  
Hours - 7 a.m. to 3 p.m.

**Spiffy Biffy Portable Toilets Inc.**  
Gary & Heather Caprara  
PHONE: 406-596-0593  
406-580-1574  
spiffybiffyportables@gmail.com

**PRAETORIAN**  
Praetorian Services and Weed Management  
Zach Hall  
(406) 596-0245  
praetorian\_guard63@yahoo.com

MAY 2323 - 2ND ISSUE

**RUBY VALLEY NUGGET**

**GARAGE-A-RAMA**  
Twin Bridges Fairgrounds  
Time to declutter!!  
Reserve your booth today!  
\$25 per booth  
Saturday June 3rd  
9am-2pm  
Direct sales & Small Businesses are welcome!  
There will be a Coffee Trailer & Food Truck for your lunch and caffeine needs!  
Contact: Jordan Pettigrew to reserve a booth @  
406-596-9999 or  
jordan.spruceupboutique@gmail.com

**PEW**  
PERFORMANCE FAB WORK  
ANDREW BRAACH  
CUSTOM WELDING  
CNC PLASMA CUTTING  
SIGNS  
MOBILE REPAIR  
AUTOMOTIVE REPAIR  
CUSTOMIZATION  
DIFFERENTIAL REBUILD  
406-498-0471  
P.O. Box 393  
TWIN BRIDGES, MT 59754  
PERFORMANCEFABWORK@GMAIL.COM

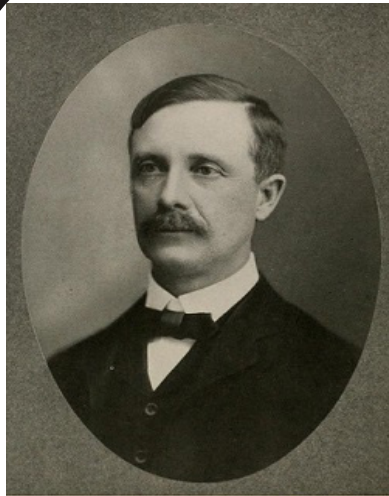
**GRAHAM DRILLING**  
SHERIDAN, MT  
Water Well Drilling,  
Pump Sales  
Installation, Service &  
Repairs.  
Phone: (406) 842-5214  
GRAHAMDRILLING.COM

**KINNEY CLEANING SERVICE**  
CHIMNEY - VENTS - WINDOWS  
DRYER VENT CLEANING - DUCT CLEANING  
ENJOY CLEANER AIR!  
GARY KINNEY  
406-702-5372  
CELL: 406-596-7003  
P.O. BOX 305  
VIRGINIA CITY, MT 59755



**PUBLISHED BY BEACON BUSINESS CENTER ~ 406-842-7488**  
DESIGNED BY JOETTA WETZSTEON - CONTACT: RUBYVALLEYNUGGET@GMAIL.COM - WWW.BEACONBUSINESSCTR.COM  
AUTHORIZED FEDEX & UPS SHIPPING CENTER SUPPLIES  
HOME DECOR - TOYS - CRAFTS - PUZZLES - OFFICE SUPPLIES - COPY - FAX - GRAPHIC DESIGN - AND MORE..

## JACOB AND FRANCES ALBRIGHT



*J. Albright*

Jacob Albright was born in New Salem, New York on July 17, 1860. At the age of twenty-four in 1884 he came to Virginia City to join his brother, Pete whom had arrived in Alder Gulch several years prior.

After he arrived in Virginia City he worked for a hotel called the Madison House, then operated by Thomas J. Farrell where he was the night clerk. After a few months, he entered employment for R.O. Hickman in a Merchandise store until 1895.

In 1895 he purchased his own clothing store at Stonewall Hall or what was the Virginia City Garage.

In June of 1889 Mr. Albright was united in marriage to Miss Frances E. Gilbert, daughter of Mr. and Mrs. Henry Gilbert of Gilbert Brewery. To this union six children were born including Mrs. W.H. Thomas, Mrs. R.C. Ferris, Mrs. W.E. Erickson, Henry G. Albright, Clifford W. Albright and Richard H. Albright who preceded his father in death at the age of thirty-three.



OLD MADISON HOTEL, 7 STORIES LONG, IN VIRGINIA CITY, M



Richard O. Hickman Store

On May 27, 1903 Mr. Albright had the opportunity to be guest at a dinner in honor of President Theodore Roosevelt, being invited by Mayor Mullins of Butte. It was a presidential banquet held by the citizens of Anaconda and Butte to honor then President Roosevelt at the Finlen Hotel. The menu for the banquet was inscribed on a copper plate and each guest received a silver medal stamped with the Greater Seal of Montana. President Theodore Roosevelt spoke on the balcony of the Finlen Hotel before the banquet.

President Theodore Roosevelt speech was about his first experience in Butte, how his traveling was "pretty rough." Roosevelt highlights the accomplishments of the United States Navy and the importance of irrigation in Montana. While he was in Butte, President Roosevelt visited Columbia Gardens and toured the streets before resuming his trip to various town in Montana that year.

In 1910 Jacob Albright served in Montana as State Senator for two terms.

In 1916 he was elected delegate to the Republican National Convention held in Chicago.

### Copper Menu from 1903

In January 1888 a fire swept through Wallace street destroying from Phil Conrey's barbershop and all the business to the left. This included Merkle's Jewelry Store, Gohn's Meat Market, and Jacob Dick's Paint Store. Mr. Gohn rebuilt his decorative tin-front meat market right away, but the other lots remained vacant for many years.

By 1913, the massive stone wall of Rank's Drug Store (the original Masonic Temple) was sagging without a sister building to shore it up. In response, Virginia City Grand Lodge No. 1 built a classic example of an early twentieth-century brick commercial building for just over \$4,600. Later, Jacob Albright moved his clothing shop from across the street at Stonewall Hall to this brick building, what we now know as Cousins Candy Shop. Mr. Albright would keep this business in operation under his care until 1933. During this time he would also serve as County Treasurer for eight years.

On November 24, 1933 he passed away in the Murray Hospital in Butte. He was a Knight Templar, a member of Lodge No. 2 and Virginia City Lodge No. 9 O.E.S. He had held the highest offices in each organization at various times.

Mrs. Albright was born at Millerville, Utah, December 18, 1861 and came to Virginia City with her parents, Henry and Margaret Gilbert (Henry owned the Gilbert Brewery in Virginia City) by covered wagon in 1863. Mrs. Albright was a member of the Montana Society of Pioneers, the Virginia City Women's Club, a life member and Past Matron of Virginia City Lodge No. 9 O.E.S., Past Matrons Club and a life long member of the Episcopal Church.

Mrs. Albright's article "A Pioneer Child's Story", was published in 1931 by the Frontier Magazine and can be found in another section of Pioneer Trails and Trials. (Page 850) She was also honored by the Society of Montana Pioneer with an award and a pin for being Pioneer Citizen of the Montana Territory before 1864.

Their daughter, Mrs. Erickson, taught school in Madison County for some time and she was appointed the first County Librarian and held that position for many years.

Mrs. Albright died in her home in Virginia City on July 21st, 1949.



Mrs. Jacob Albright (Frances)  
Frances E. Gilbert Albright

## RUBY VALLEY HAPPENINGS

**BASEBALL, BURGERS AND A RAFFLE - May 19 - Riverside Park - Twin Bridges** - Grilling at 5:30 - \$5 burgers or \$7 bacon cheese burgers - Come out and have a Friday night burger and enjoy a game.

**At SHERIDAN LEGION POST OPEN HOUSE MEET AND GREET** - May 23rd at 5:30 at the Sheridan Legion Post. See Ad

**ELLING HOUSE EVENT:** Friday May, 19 at 7PM Phil Page, working cowboy, saddle maker, traditional western musician and story teller will be at the Elling House Arts and Humanities Center, 404 East Idaho Street, Virginia City. Let Phil Page take you on a journey back to the time when early cattle drives from Texas to Montana supplied beef to the gold fields. The fee for this performance is \$15.00 per person For more information, please call 406-843-5454 or 460-843-5507..

**VIRGINIA CITY CHAMBER'S DINNER AND AUCTION** - May 20th - registration at 5:30 - Dinner at 6:30 pm - see ad

**GARAGE-A-RAMA** - June 3rd from 10-2 at the Madison County Fairgrounds

**VIGILANTE MUSIC FEST** - June 10th - See Ad

**Fly In** - June 17th - 8:30 am - Free event, open to the public. Twin Bridges Airport - The event will kick off with a pancake breakfast fundraiser by the Twin Bridges Rotary and VFW. There will be free airplane rides for kids 8-17 between 8 am and 10 a.m. You won't want to miss the pilot games and kids will definitely want to join the ping pong ball drop. To complete the event, join us for a free BBQ lunch. Cash prizes for people's choice 1st-3rd for aircraft and car's.

**TWIN BRIDGES BLUEGRASS FESTIVAL** - June 28th to July 2nd - The first annual Twin Bridges Bluegrass Festival, held in Twin Bridges, Montana, at the Madison County Fairgrounds. Gates open for camping at 0800 on Wednesday, June 28th, and you are welcome to stay through Monday morning, July 3rd. There will be 10+ bands playing music on Friday, Saturday and Sunday, food and craft vendors, a building for folks to set up in who would like to sew or quilt, and if we can get 20 people to sign up, there will be a horseshoe tournament on Saturday morning. Folks are highly encouraged to jam as much as possible, and there will be 2 buildings available as pickin' sheds for nighttime jams, should folks want to use them. If you like trout fishing, the Beaverhead River runs right along the edge of the fairgrounds, and town is located just across the river. The fairgrounds are located right off Hwy 41, and are 1/2 hour from Dillon and 1 1/2 hours from Butte, and 1 1/2 hours away from Bozeman. This will be a wonderful family event, and we sure hope to see you there. More details about the venue, the bands, etc, are on the website. <https://twinbridgesbluegrass.com>

**FLOATING FLOTILLA RIVER PARADE** - July 22nd at 11 am - Get your parade floats ready for the Floating Flotilla River Parade Saturday, July 22nd! Float line up is at 11:30AM, parade starts at 12:00PM!! 2022 Theme is TBD Best Float Awards: Adults: \$200.00 Youth (17 and under): \$100.00 Duck Race to follow!

**RUBY VALLEY POOL:** Are you or someone you know looking for a summer job? We are accepting applications and holding interviews next week! We offer competitive wages, opportunity for a tan and flexible schedules. Applications can be found on our website [www.rubyvalleypool.com](http://www.rubyvalleypool.com) Please email completed applications to [swimsheridan@gmail.com](mailto:swimsheridan@gmail.com)

**P'S CLOTHES & MORE:** Located above the Twin Bridges Library. Hours: Monday: 10-2 Wednesday: 9-2 Friday: 10-2 Saturday: 10-2 - All items are FREE to the community. Call P at 406-600-2983 to donate or for questions.

**LOST CABIN BAR:** Monday: Open Pool Table 5-7 - Tuesday: Music Trivia 6:30 - 8 - Wednesday: Whiskey Wednesday (Discount flights and tasters) - Thursday: First Thursday of Month Ladies Night - Friday: Red (Remember Everyone Deployed) Friday. Come in or call for details - Every Monday through Friday Happy Hour 5-6 - Check our FB page for weekend specials @lostcabinbar

### PUBLIC LIBRARY EVENTS:

SHERIDAN - Newspaper History Group - Tuesday mornings @ 9 AM. Knitting Group - Thursdays @ 2 PM

CAREGIVER SUPPORT GROUP - First and third Tuesdays at 6 pm For more information call 406-842-7981.

TWIN BRIDGES - Thank you for everyone who filled out our survey! We are always working to make our library fit the needs of our community. Our five winners of the \$20 in Twin Bucks are: Anna Ingram, Rachele Parsons, Betty Humbert, Lela Wendt, and Sheila Burke. Congratulations! Check in at the library for information about our summer reading program schedule. It looks to be a lot of fun! Don't forget Lego Club...there will be no meeting in May, but will pick up again in June!

**TWIN BRIDGES HELPING HANDS:** Twin Bridges-MT Helping Hand Food Pantry, we aim to End Hunger in Montana. We have moved to 208 1/2 S. Main St. Wednesday's. 10am to 3pm. Call for appointment any other day or time. We are here for you Madison County and neighboring towns. Pantry is open every Wednesday 11-2 or call for an appointment. Have on Hand canned fruits, vegetables, soups, sauces, jams, jellies, more. Boxed or bags of rice, beans, dinner helpers, pasta, dry milk, some meat. Toiletries. Adult pads/pull ups. Laundry items. Cleaning supplies. Dog, Cat food and Litter. If you don't see what you would like us to carry, please let us know. 596-1978 & 233-9616

**RUBY VALLEY FOOD PANTRY:** Food is distributed on Saturday mornings from 10-12 @ 206 S. Main in Sheridan, MT -between gas station and post office.

**3 RIVERS WORSHIP CENTER:** Worship is what we are all about and we would love to have you join us. Come as you are and be blessed. Every Sunday @ 10:30 am @ 3648 MT-287. Family friendly. Weekly Grief Support Group - Saturdays at 10 am and Mondays at 6 PM - for more information call 406-381-6677

**CAREGIVER SUPPORT GROUP:** First and third Tuesdays at 6PM at the Sheridan Library - For more information call 406-842-5770

**If you have a event you would like us to help you promote, please let us know.**

**[www.rubyvalleynugget@gmail.com](mailto:www.rubyvalleynugget@gmail.com)**

**EH ENNIS HOME FURNISHINGS**  
 MATTRESSES, APPLIANCES, FURNITURE, ELECTRONICS  
 ennishomefurnishings.com | Office: 406-682-3250 | 120 W Williams St  
 order@ennishomefurnishings.com | Fax: 406-682-3231 | Ennis, MT 59729

FOR ALL YOUR CONSTRUCTION HARDWARE AND FARM RANCH NEEDS!!!  
**IMOC BUILDING SUPPLIES SHERIDAN, MONTANA 406.842.5643**  
 LUMBER - HARDWARE - FEEDS - LAWN - GARDEN - FARM RANCH  
 WWW.IMOCBUILDINGSUPPLIES.COM  
 Nutrena

**ODYSSEY**  
 DEPENDABLE COMPUTER REPAIR  
 PC, MAC AND SERVER REPAIR, IT SUPPORT, BUSINESS SECURITY AND CAMERAS FOR HOME OR RANCH  
 WWW.COMPUTERSMT.COM (406) 992-4093

**HOME PARK ASSISTED LIVING**  
 842-5133  
 homeparkassistedliving.com  
 504 RAY LANE SHERIDAN, MONTANA

**MONTANA TOBACCO QUIT LINE**  
 1-800-QUIT-NOW  
 Get 8 weeks of FREE patches, gum or lozenges SHIPPED STRAIGHT TO YOUR DOOR!

**ROCKIN' S BUSINESS SERVICES LLC**  
 PO Box 156 Sheridan MT 59749  
 406-682-7769 406-842-7778  
 Cell: 406-581-3818 Fax: 406-281-7242  
 Melody@rockinstax.com WWW.Rockinstax.com

**NOVICH INSURANCE**  
 novich@montanainurance.net  
 P: (406)684-5264 / F: (406)684-5701  
 PO Box 394 / 104 W 4th Ave - Twin Bridges, MT 59754  
 Home - Auto - Farm/Ranch - Business - Work Comp

**BERKSHIRE HATHAWAY HomeServices**  
 Montana Properties  
 Frank Colwell Broker  
 32 years serving Montana Real Estate Needs

**Tobacco Root Mountains Care Center**  
 Phone: (406) 842-5600 Fax: (406) 842-5419  
 326 Madison P.O. Box 308 Sheridan, MT 59749

**HARSHBARGER LAW FIRM**  
 www.harshbargerlawfirm.com  
 Lori A. Harshbarger, Attorney  
 Kylee Gibson, Attorney  
 Hilary O. Betson, Attorney  
 Tai Goldin, Of Counsel  
 204 S. Main Street P.O. Box 445 Twin Bridges, MT 59754  
 Phone: (406) 684-5001 Fax: (406) 684-5116  
 2022 has brought some exciting changes to our business! We have relocated our office to Twin Bridges. We look forward to helping you with your legal matters at our new location, by phone or via Zoom.

**MOUNTAIN BUILDING CENTER**  
 TWIN BRIDGES, MT  
 (406) 682-5669  
 TRAEGER DIAMOND KOTE Building Products Rollex

**WE ARE HIRING**

**ALDER EAGLETS CHILDCARE MON-THURS 7:30-5:30**

**POSITIONS AVAILABLE**  
 • Full Time & Part Time Providers (18 or older)  
 • High School Helper! (17 or under)  
 pay is DOE starting at \$16 for full time, \$14 part time, & \$12 for highschool help!

**MUST BE ABLE TO COMPLETE REQUIRED TRAININGS AND BE CURRENT ON IMMUNIZATIONS.**

**FULLTIME EMPLOYEES CAN BRING A CHILD FOR FREE!**

Please contact Pam Birkeland for more information!  
 pbirkeland@madisoncountymt.gov or call (406) 439-8713

**Twin Bridges Bluegrass Festival**  
 June 28th—July 2nd, 2023, Madison County Fairgrounds  
 Twin Bridges, Montana

**HANDYMAN TICE**  
 Corey Tice 720-732-6506  
 PO Box 42 Cptice@yahoo.com  
 Sheridan, MT 59749 Free Estimates  
 Carpentry Flooring Drywall Sprinkler Systems Automotive Repair

**BLUE ANCHOR BAR & GRILL**  
 OPEN 7 DAYS A WEEK 8 A.M. - 9 P.M.  
 DAILY SPECIALS  
 NIGHTLY SPECIALS  
 TWIN BRIDGES MT. 406-684-5655  
 CONTACT 596-7636 OR 539-4238

**Opportunity Bank OF MONTANA**  
 OPPORTUNITYBANK.COM

**IN HONOR OF MEMORIAL DAY SHERIDAN LEGION POST PRESENTS AN OPEN HOUSE MEET & GREET TUESDAY MAY 23RD AT 5:30 PM**

MEET SEVERAL LOCAL VETERANS AND HEAR ABOUT THEIR MILITARY SERVICE TO THIS COUNTRY

The Sheridan Legion Post will be honoring the observance of Memorial Day by hosting an Open House and Veteran's Symposium. This event will be held on May 23rd at 5:30 pm at the Legion Post on Main Street.

The community is invited to come and view the renovations made to the 1930's building and enjoy a Veteran's forum. Several veteran's will be on hand to describe their military training and experiences in the service of their country. Information will be provided regarding the Legion's involvement in the forthcoming Memorial Day's schedule of events.

**SHERIDAN LEGION POST MAIN STREET**

*the Elling House*  
 ARTS & HUMANITIES CENTER  
 presents  
**Phil Page**  
 TRADITIONAL WESTERN MUSIC AND STORY TELLING  
 Let Phil Page take you on a journey back to the time when early cattle drives from Texas to Montana supplied beef to the gold fields. Join us for a fun night of music, history, and laughter. Phil is a songwriter, singer, musician, storyteller, as well as a working cowboy and saddle-maker from Dillon, MT. His songs are in the cowboy, country folk genre. His vocal resonance and references to the artwork of Charlie Russell help us experience the American Old West, a defining period of American national identity.  
 FRIDAY AT 7PM  
**May 19th**  
 ADMISSION IS \$15 PER PERSON / RESERVATIONS RECOMMENDED  
 404 E. IDAHO ST VIRGINIA CITY, MONTANA  
 406.843.5454 406.843.5508 WWW.ELLINGHOUSE.ORG

Are you or someone you know looking for a summer job?

Ruby Valley Swimming Pool is now hiring for the 2023 swim season. Must be 15 years old. We offer competitive wages, opportunity for a tan and flexible schedules.

Applications can be found on our website [www.rubyvalleypool.com](http://www.rubyvalleypool.com)

Please email completed applications to [swimsheridan@gmail.com](mailto:swimsheridan@gmail.com)

## GRIEF SUPPORT GROUP

Help and encouragement after the death of a spouse, child, family member, or friend.



### WEEKLY GRIEF SUPPORT GROUP

When: Saturday - 10 AM  
Monday - 6 PM

For Information Contact: 406-381-6677

Where: 3 RIVERS WORSHIP CENTER  
3648 MT HWY 287  
Sheridan, MT 59749

### NOT EVERYONE TRAPPED BY ALCOHOL IS AN ALCOHOLIC

Families and friends are suffering too.

Do you worry about how much someone drinks?

Al-Anon and Alateen can help.

Al-Anon Family Groups  
Help and hope for families and friends of alcoholics

1-888-4AL-ANON • AL-ANON.ORG

Do you care for someone with dementia, disability or chronic illness?

*You Are Not Alone!*

### CAREGIVER SUPPORT GROUP

First and Third Tuesdays at 6pm  
at the Sheridan Library  
109 East Hamilton St, Sheridan  
406-842-5770

The Caregiver Support Group provides emotional, educational and social support for the caregivers, family and friends of individuals with dementia, disability, or chronic illness.

### FIREWOOD BANK OF THE RUBY VALLEY

## VOLUNTEERS NEEDED!

### HELP OUT YOUR COMMUNITY

**CUT - SPLIT - STACK FIREWOOD**

FOR MORE INFORMATION CONTACT 842-7392

HEALING WATERS Lodge  
TWIN BRIDGES, MONTANA

Mike & Laura Geary, Owners

270 Tuke Lane - Twin Bridges, Montana  
Office: 406-684-5960  
Mike's Cell: 406-459-2030 Laura's Cell: 406-459-5582  
[www.hwllodge.com](http://www.hwllodge.com) [hwllodge@gmail.com](mailto:hwllodge@gmail.com)

Resolute Roots REALTY

Dawn Marie Buttrey  
Broker/Owner  
406-600-4802  
[ResoluteRoots406@gmail.com](mailto:ResoluteRoots406@gmail.com)

## LAST ISSUE ANSWERS

|   |   |   |   |   |   |   |   |   |   |   |   |   |   |
|---|---|---|---|---|---|---|---|---|---|---|---|---|---|
| S | T | U | D | C | U | S | P | A | S | K | S |   |   |
| P | A | N | E | U | N | T | I | L | S | H | I | P |   |
| A | X | E | S | P | I | A | N | O | P | O | L | O |   |
| S | I | X | T | H | T | R | A | N | S | I | E | N | T |
| O | P | E | N | I | N | G | A | R | T | I | S | T |   |
| U | L | C | E | R | O | U | S | A | N | T | I | C |   |
| R | U | T | G | N | O | M | E | A | R | E |   |   |   |
| S | T | E | A | M | N | A | R | R | A | T | E | D |   |
| O | D | I | O | U | S | P | R | O | M | I | S | E |   |
| L | O | S | E | R | S | U | M | S |   |   |   |   |   |
| S | W | E | E | T | E | N | E | R | T | O | T | A | L |
| L | I | A | R | R | A | G | E | S | N | I | T | E |   |
| A | L | S | O | S | T | A | V | E | I | C | O | N |   |
| G | L | E | N | E | L | S | E | A | S | P | S |   |   |

## ACROSS

1. Fate
6. Hemorrhaged
10. Price
14. Electronic letter
15. Entice
16. One single time
17. British penny
18. Largest continent
19. Comportment
20. Showing curiosity
22. A small lake
23. Explosive
24. Place into the soil
26. A protective covering
30. Pizazz
32. Not late
33. Pieces of artwork
37. Away from the wind
38. Room dividers?
39. Period of discounted prices
40. Hypnotist
42. Scoundrel
43. Omit
44. Focusing glass (plural)
45. Poker holdings
47. Not cold
48. Canvas dwelling
49. Dramatic
56. Arm bone
57. Animal fat
58. Love intensely
59. Aspersion
60. Apart from this
61. Stop
62. Sacred
63. Kiddies
64. Fables

## CROSSWORD PUZZLE

|    |    |    |    |    |    |    |    |    |    |    |    |    |    |    |    |
|----|----|----|----|----|----|----|----|----|----|----|----|----|----|----|----|
| 1  | 2  | 3  | 4  | 5  |    | 6  | 7  | 8  | 9  |    | 10 | 11 | 12 | 13 |    |
| 14 |    |    |    |    |    | 15 |    |    |    |    | 16 |    |    |    |    |
| 17 |    |    |    |    |    | 18 |    |    |    |    | 19 |    |    |    |    |
| 20 |    |    |    |    |    | 21 |    |    |    |    | 22 |    |    |    |    |
|    |    |    |    | 23 |    |    |    | 24 | 25 |    |    |    |    |    |    |
| 26 | 27 | 28 | 29 |    |    |    | 30 | 31 |    |    |    |    |    |    |    |
| 32 |    |    |    |    |    | 33 |    |    |    |    |    | 34 | 35 | 36 |    |
| 37 |    |    |    |    |    | 38 |    |    |    |    | 39 |    |    |    |    |
| 40 |    |    |    |    | 41 |    |    |    |    | 42 |    |    |    |    |    |
|    |    |    |    |    |    |    |    |    |    | 43 |    |    | 44 |    |    |
|    | 45 | 46 |    |    |    |    |    |    | 47 |    |    |    |    |    |    |
| 48 |    |    |    |    |    | 49 | 50 | 51 |    |    |    | 52 | 53 | 54 | 55 |
| 56 |    |    |    |    |    | 57 |    |    |    |    | 58 |    |    |    |    |
| 59 |    |    |    |    |    | 60 |    |    |    |    | 61 |    |    |    |    |
| 62 |    |    |    |    |    | 63 |    |    |    |    | 64 |    |    |    |    |

## DOWN

- |                                     |                       |                    |
|-------------------------------------|-----------------------|--------------------|
| 1. Visored cap                      | 28. Angers            | 51. Once, long ago |
| 2. Ends a prayer                    | 29. Primary           | 52. Notion         |
| 3. Tirade                           | 30. Untrue            | 53. Anthracite     |
| 4. Rodents                          | 31. Jaunty rhythm     | 54. Rear end       |
| 5. With vigilance                   | 33. Discharged a debt | 55. Dregs          |
| 6. Explosion                        | 34. Badgers           |                    |
| 7. Craving                          | 35. Adhesive          |                    |
| 8. A Great Lake                     | 36. Notices           |                    |
| 9. Says impassively                 | 38. Wrist band        |                    |
| 10. Likening                        | 41. Antiquity         |                    |
| 11. An aromatic flavorful vegetable | 42. Take back         |                    |
| 12. Fragrance                       | 44. Fate              |                    |
| 13. Be inclined                     | 45. Howdy             |                    |
| 21. Finish                          | 46. Cancel            |                    |
|                                     | 47. Hell              |                    |
|                                     | 48. Backside          |                    |
|                                     | 50. Angelic headgear  |                    |

# BEACON BUSINESS CENTER

Printing - Copy - Graphic Design - UPS & FedEx Shipping Outlet  
Office Supplies - Puzzles - Toys & More!

LET US DO YOUR PRINTING  
& MAKE IT EASY FOR YOU  
EMAIL US YOUR FILES & WE WILL HAVE IT  
READY WHEN YOU NEED IT

20% off  
All Home Decor  
And Greeting Cards

Scan Me!



BEACON BUSINESS CENTER  
beaconbus@gmail.com - www.beaconbusinessctr.com  
203 S. Main - Sheridan, MT  
406-842-7488



MADISON COUNTY CATTLEWOMEN  
FIRST ANNUAL

# AGRICULTURAL FAIR

Saturday, June 3rd - 5:30 to 7:30 PM  
Madison Valley Bank Park, 213 Main Street, Ennis

Join the MCCW for a fun and educational evening centered on all things cattle and agriculture!

We'll have activities for kids, educational agricultural demonstrations, and western vendor booths, as well as raffle items. Don't miss it!

Featuring live bluegrass music from The Music Bachs and food from Fully Loaded Tacos!

Questions? Email or call us!  
contact@madisoncountycattlewomen.com  
(406) 599-2397



\*Your locally, family-owned fuel distributor\*  
2 convenience store locations  
Norris & Sheridan  
Delivering fuel in Madison & Jefferson counties  
Main office: 685-3379  
Sheridan store: 942-5978  
Norris store: 685-3361

**Trails End Land Company**  
Jim Kaatz  
Broker/Owner  
PO Box 645  
101 S. Main Street Sheridan, MT 59749  
Phone: 406-842-5960  
Cell: 406-596-1060  
Email: vigilant.jk@gmail.com



Gary T. Caprara  
DESIGN - INSTALLATION - SALES  
(406) 580-1574 - FAX (406) 458-0138  
lonemountain70@yahoo.com  
www.crestwoodinc.com www.canyoncreek.com

## WORD PUZZLE

### Types of Gemstones

|   |   |   |   |   |   |   |   |   |   |   |   |   |   |
|---|---|---|---|---|---|---|---|---|---|---|---|---|---|
| L | I | P | E | A | R | L | A | E | I | A | I | T | D |
| A | I | E | A | K | P | E | R | I | D | O | T | D | D |
| R | Q | D | A | R | U | A | Z | U | R | I | T | E | I |
| U | I | U | L | T | A | N | J | K | A | A | U | S | A |
| I | Z | N | A | A | A | R | Z | A | G | R | R | A | M |
| C | R | O | Z | M | R | N | R | I | D | A | T | P | O |
| I | T | I | T | D | A | E | Z | E | T | E | R | P | N |
| T | P | O | O | L | Y | R | M | A | I | E | A | H | D |
| R | R | R | P | D | A | G | I | E | N | J | P | I | Z |
| I | P | M | P | A | M | A | D | N | K | I | I | R | T |
| N | L | R | L | L | Z | R | I | E | E | R | T | E | A |
| E | O | N | Y | X | R | N | E | E | I | O | U | E | E |
| U | L | A | P | O | R | E | P | S | A | J | L | B | N |
| A | L | T | S | Y | H | T | E | M | A | X | D | I | Y |

TOPAZ  
EMERALD  
KUNZITE  
AQUAMARINE  
ONYX  
AZURITE  
CITRINE  
SAPPHIRE  
AMETHYST  
JASPER  
DIAMOND  
PEARL  
RUBY  
GARNET  
TANZANITE  
PERIDOT  
JADE  
OPAL

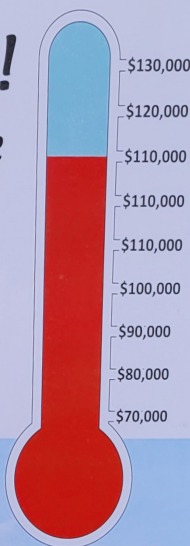
## We are so close!

Can you help us complete  
this project?

We have raised \$110,000  
and our goal is  
**\$130,000**

**Sheridan Community  
Charitable Foundation**

PO Box 435 • Sheridan, MT 59749



# Picturing a new kitchen?



A Home Equity Line of Credit  
is the affordable way to get things done.  
And our friendly team makes it easy.

## HighPeaksFCU.com

Sheridan 406-842-5372 Dillon 406-683-4373



Loans subject to approval. NMLS #695851 Federally insured by NCUA. HPF-0994.1

# Ruby Valley Food Pantry

Open Saturdays 10-12 am  
206 S. Main Street, Sheridan  
Green building next to the Post Office

Neighbors helping  
neighbors



Scan the QR  
Code to donate



WE TIP OUR GLASS  
TO THE WILDER ONES

111 S. MAIN - SHERIDAN, MT - 842-5977



Madison Valley  
BANK

24 Hour ATM Locations:  
Harrison • Ennis • Virginia City  
Sheridan • Boulder • Montana City  
Bozeman • West Yellowstone

Since 1965  
Ennis | Boulder | Montana City  
Bozeman | West Yellowstone

www.madisonvalleybank.com



## Sheridan Schools Needs Your Help!

Do you or anyone you know have the following  
that you would be willing to rent?

- A current rental property
- Unoccupied property
- Extra room in your home
- A 2nd vacation home in use only part of the year
- Property or housing you'd be willing to donate

Due to teacher shortages it's difficult to find applicants for teaching positions. Lack of available, affordable housing exacerbates this problem. Fortunately we live in a community that comes together to solve problems!

We are asking for help gathering potential housing options for teachers. Even if you have something that would only be available for a portion of the year we would appreciate you reaching out. We are currently in an information gathering phase. Compensation would be offered for lodging and any donations may be tax deductible.

Please call Jason at (406) 596-3119 THANK YOU!

# VIGILANTE

## MUSIC FEST

JUNE 10TH  
HIGH NOON  
VIRGINIA CITY MONTANA  
DISCOVERY PARK

GRAVEL BAR  
BURN'T TREE BREWING  
WILDER DISTILLERY

TICKETS SELLOUT.IO

FEATURING

**DEAD SKY**  
**TESSY LOU WILLIAMS**  
**SAM PLATTS & HIS PLAINSMEN**  
**DAMMIT LAUREN!**  
**MATT WALLIN & HIS NERVOUS BREAKDOWN**  
**IZAAK OPATZ**  
**THE DEAD YELLERS**  
**PAUL LEE KUPFER**  
**THE DEGROOT FAMILY BAND**  
FREE RANGE  
**THE NELSON GIRLS**

TWIN BRIDGES PUBLIC SCHOOLS May 2023

| Sun | Mon   | Tue  | Wed   | Thu   | Fri   | Sat   |
|-----|---|--|---|---|---|---|
|     | Staff lunch mtg   | 1<br>Noon sophomore class mtg<br>1pm Top 8 Track Meet (Anaconda)<br>6pm Booster Club mtg   | 2<br>AP Language Test<br>Noon BPA mtg   | 3<br>7/8th gr field trip to Hamilton/Big Hole Battlefield<br>Pre-ACT Testing<br>Noon FFA mtg  | 4<br>Cinco de Mayo<br>State Music<br>Community Service Day<br>Noon Jr class mtg<br>FFA Taco Cook Out! | 5<br>Festival, Missoula<br>10am HS track<br>Meet in Missoula<br>MS Track Meet in Deer Lodge |
|     | 7<br>Madison Co. MS Track Meet (Dillon)<br>Noon Exec. Student Co. mtg<br>5:30pm Travel Group 2023 mtg (library) | 8<br>MS track meet in Anaconda<br>3/4th gr field trip to Bannack<br>2nd gr field trip to Raben Ranch<br>Noon Student Council mtg<br>7pm REG. BOARD MTG (MT rm) | 9<br>Noon 8th gr class mtg  | 10<br>5th & 6th gr field trip<br>Noon Close-Up mtg<br>7pm Am Legion mtg (MT rm)<br>7pm HS Spring Concert (MP gym)<br>5:30 Travel Group 2025 Mtg (library) | 11<br>trip to Hardin<br>District Track in   | 12<br>Bozeman (Gallatin HS)   |
|     | 14<br>Mother's Day  | 15<br>8th gr class trip to Yellowstone<br>Noon Sr class mtg<br>7pm Trailblazers 4-H mtg (lunchrm)  | 16<br>1/2/3rd gr field trip to Museum of the Rockies<br>Noon Safety cmttee mtg<br>3:10pm Falcon Buddies | 17<br>Noon Freshman class mtg<br>6:30pm Elem./MS Spring Concert   | 18<br>Divisional Track  | 19<br>in Missoula   |
|     | 21<br>2pm HS Graduation (main gym)  | 22<br>6pm 8th gr Promotion (MP gym)  | 23<br>10am K-6 Bikes for Books Awards (MP gym)  | 24<br>Last Day of School!<br>End 4th qtr/2nd sem  | 25<br>State Track Meet  | 26<br>in Laurel   |
|     | 28<br>Memorial Day  | 29   | 30  | 31  |   |   |

print-a-calendar.com

May 2023

Sheridan Public Schools

May June

| Sunday  | Monday                              | Tuesday   | Wednesday  | Thursday  | Friday  | Saturday  |
|---|-------------------------------------|---|--|---|---|---|
| 30  | 5/1                                 | 2<br>Middle School Track @ Butte -<br>Track @ Anaconda - Top 8 - 12 | 3<br>7-12 portfolio day in all classes                       | 4<br>10:30a Spanish to Dillon                                 | 5   | 6<br>Middle School Track @ Deer Lc<br>Track @ Dillon TBA<br>10a Sheridan Bike Rodeo |
| 7   | 8                                   | 9<br>Board Meeting<br>7p Sheridan School Board Mee                  | 10   | 11  | 12<br>County Training in the Element                                    | 13<br>Track @ DISTRICT - Galatin HS   |
| 14<br>11:30a Mothers Day                              | 15<br>AWARDS BANQUET 6 PM - Spr     | 16<br>Senior Portfolios<br>Senior Portfolios 8 - 12 PM              | 17<br>Senior Portfolios 8 - 12 PM<br>9a Jr. & Sr. in library | 18<br>JSK - 11 Portfolios                                     | 19<br>Track @ Divisionals - Missoula Big Sky - 10:00 AM                 | 20  |
| 21  | 22<br>STUDENT COUNCIL CAMPAIGN WEEK | 23<br>Senior Semester Test  | 24<br>5-12 Concert - Elem 6PM<br>Senior Semester Test        | 25<br>JSK - 4 Elem Concert - Elem 6P<br>Seniors last day      | 26<br>Memorial Day Break  | 27<br>6:30a Track @ STATE - Laurel - TBA  |
| 28<br>Memorial Day Break<br>Senior Graduation 1:00 PM | 29                                  | 30<br>Elementary Fun Day<br>STUDENT COUNCIL ELECTIONS               | 31<br>SEMESTER TESTS   | 6/1<br>9a Kindergarten Promotion<br>6:30p 8th grade Promotion | 2<br>End 4th Quarter / 2nd Semeste<br>HAVE SCHOOL<br>LAST DAY OF SCHOOL | 3<br>Spanish trip   |

**Ruby Valley Sheds**  
DANIEL & LEONA LEE  
179 JUDY LANE - ALDER, MT  
CELL: 406-217-2131  
HOME: 406-842-5206

**ALLHANDS AUTO CLINIC, LLC**  
3565 Hwy 287  
SHERIDAN, MT 59749  
406-842-7155  
FULL SERVICE DIAGNOSTIC AND REPAIR CLINIC  
M-F 7:30AM to 5:00PM  
ROBERT ALLHANDS, OWNER 406-596-0002  
BRADLEY ALLHANDS, OWNER 406-596-0040

**SPC CONSTRUCTION LLC**  
Sean Phillips, General Contractor  
New Homes, Additions, Log Structures,  
Rustic Styles, Chinking, Consulting  
Home: 406-684-5509 Cell: 406-596-9403

**THE CABINET STOP**  
CABINETS & COUNTER TOPS  
Locally owned and operated.  
Serving SW Montana.  
Offering free 3D layout and quote.  
No job too big or small!



Meet Sunny Harmon



For more information call  
Sunny Harmon at: 406-925-0647  
Jordan Harmon at: 406-925-0615  
Gary Caprara at: 406-580-1574

**Alison's Pantry**  
CAROL & CANDY WILCOX  
819 MIDDLE ROAD  
TWIN BRIDGES, MT 59754  
CAROL - 684-5142  
CANDY - 599-5609

**TB Auto Parts**  
104 N MAIN ST.  
PO BOX 434  
TWIN BRIDGES, MT 59754  
PHONE: 406-684-5739  
FAX: 406-684-5377  
tb\_auto@yahoo.com

We're gearing up for the Summer 2023 Season!  
Take a look below for hours and information about businesses that are opening before Memorial Day weekend!



**DINING & TREATS:**  
Road Agents Roost  
Thurs - Sun, 12-8 pm. Call to check on additional hours.  
Virginia City Cafe  
Until May 1, open 11 am to 3 pm.  
Starting May 2, open 7 am to 3 pm.  
Starting May 19, open 7 am to 8 pm.  
Wells Fargo Steakhouse & Eatery  
Opening May 24, Mon - Sat, 5 pm - 9 pm  
Cousin's Candy  
Beginning May 5, 10 am to 6 pm.  
The Creamery  
Opening May 6 with limited hours  
ENTERTAINMENT:  
Elks Lodge  
Fri, 5 pm to close.  
Thompson Hickman Museum opens May 27.  
Pioneer Bar  
Open daily 10 am to closing.  
Bale of Hay Saloon  
Opening May 15  
SHOPPING:  
Boot Hill Mercantile  
Open 10 am - 3 pm Sun - Thurs, 9 am - 5 pm Fri - Sat.

**Julie's Gems**  
Through April 28, 10:30 am - 3 pm. Opening May 1, 10:30 am - 5 pm, seven days a week.  
LODGING:  
Rambling Moose Campground  
Opening May 19  
The Bonanza Inn, Meagher Cabin, Harding House and Daems House open May 12.  
Fairweather Inn and Nevada City Cabins open May 19.  
Madison River Foundation  
Mon - Fri, 10 am - 6 pm, Sat & Sun by appointment.  
Montana Picture Gallery  
Opening May 20, 11 am to 5 pm.  
El Western, Ennis  
Office Hours 8 am to 10 pm.

**3 RIVERS COMMUNICATIONS**  
Internet Phone  
406-467-2535  
800-796-4567  
3rivers.net

**MADISON COUNTY HEATING & COOLING**  
RESIDENTIAL & COMMERCIAL HEATING & AIR CONDITIONING  
406-221-6677

**SUDOKU PUZZLE**

|   |   |   |   |   |  |   |   |
|---|---|---|---|---|--|---|---|
| 5 | 2 |   | 8 | 4 |  | 6 |   |
|   | 7 |   |   | 1 |  |   | 8 |
|   | 8 |   |   |   |  | 5 | 4 |
|   |   | 9 | 6 |   |  | 1 |   |
| 8 | 7 |   |   |   |  | 4 | 5 |
| 7 |   | 2 |   |   |  |   | 6 |
|   |   |   |   |   |  | 1 |   |
| 2 | 5 | 7 |   |   |  | 9 |   |
|   |   |   | 4 |   |  |   |   |

**ANSWERS FROM LAST ISSUE**

|   |   |   |   |   |   |   |   |   |
|---|---|---|---|---|---|---|---|---|
| 9 | 4 | 8 | 5 | 6 | 2 | 1 | 3 | 7 |
| 6 | 5 | 3 | 8 | 1 | 7 | 2 | 4 | 9 |
| 7 | 2 | 1 | 4 | 9 | 3 | 5 | 8 | 6 |
| 3 | 7 | 4 | 1 | 5 | 9 | 8 | 6 | 2 |
| 5 | 8 | 6 | 7 | 2 | 4 | 3 | 9 | 1 |
| 2 | 1 | 9 | 3 | 8 | 6 | 4 | 7 | 5 |
| 1 | 9 | 5 | 6 | 3 | 8 | 7 | 2 | 4 |
| 4 | 3 | 2 | 9 | 7 | 5 | 6 | 1 | 8 |
| 8 | 6 | 7 | 2 | 4 | 1 | 9 | 5 | 3 |

# THE CABINET STOP



## CABINETS & COUNTERTOPS



**Locally owned and operated.  
Serving SW Montana.  
Offering free 3D layout and quote.  
No job too big or small!**

**For more information call  
Sunny Harmon at:  
406-925-0647**



### Falcon Football Camp

Twin Bridges  
5<sup>th</sup>-8<sup>th</sup> grade

July 20, 21, 22, Thursday, Friday, Saturday  
9 am -2 pm

Falcon Football Camp is a supervised limited contact football camp. Coaches will be providing basic football fundamentals through instruction, drills, and games. Camp will run July 20<sup>th</sup> through 22<sup>nd</sup>.

A sack lunch will be provided for participants, with a BBQ and Flag Football game on the last day of camp. We ask that parents/guardians provide their own health insurance for each participant.

Registration Fee is \$35 per participant with scholarships available so everyone can participate. Each child will receive a shirt, sizing will be on the registration forms.

Max number of camp participants is limited to 40 and is open to any school in the area so please sign up as soon as possible. All registrations are due by June 30<sup>th</sup>.

A drawing for raffle tickets sold will be drawn by the participants at the end of the camp. Tickets are one for \$5 or five for \$20. If you would like tickets to purchase or sell please contact Frank or Jennifer Williams. Tickets will also be located at local businesses for purchase.

- Raffle Prizes:
1. Float trip with Flatline Outfitters
  2. 1/2 Pig processed
  3. 1/4 Pig Processed
  4. Handmade and stained Wall Coat Rack
  5. Gift Baskets

For a registration forms or raffle tickets please contact Frank, or Jennifer Williams at (406) 925-9759 or [fjwcowboys@hotmail.com](mailto:fjwcowboys@hotmail.com).

TWIN BRIDGES BASEBALL



## Raffle

1st place  
Fly Rod - Winston Rod Company Value \$1200  
2nd place  
Gun Voucher - RW Outdoors Value \$800  
3rd place  
Treager Grill - Walter's Ace Hardware value \$800

VS

KEEP  
BASEBALL IN  
TWIN  
BRIDGES!

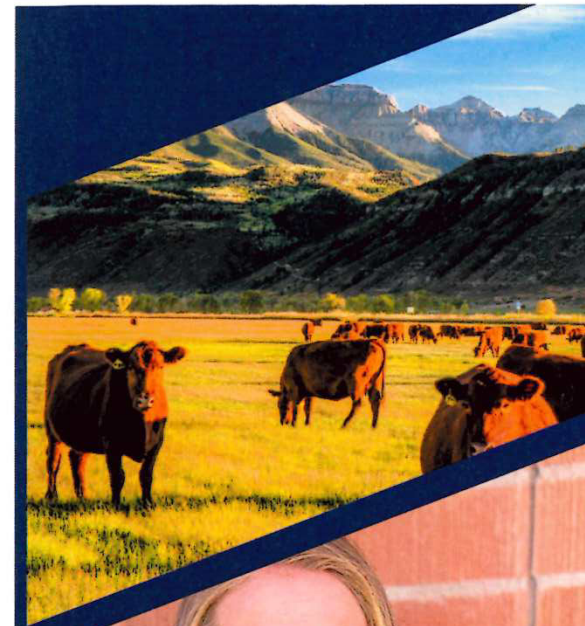
1 TICKET \$20  
5 TICKETS \$70  
10 TICKETS \$100

**DRAWING TO BE HELD AT LAST  
SENIOR HOME GAME TBD**

**PROCEEDS GO TO TWIN BRIDGES  
SUMMER BASEBALL**

CONTACT JEFFREY MILLS AT 419-606-1421 TO BUY TICKETS

FACEBOOK @ TWIN BRIDGES BASEBALL LITTLE LEAGUE | WATCH AT LOCAL STORES TO PURCHASE TICKETS | TICKETS FOR SALE AT CORN HOLE TOURNAMENT APRIL 15TH



## Hello Neighbor

I am thrilled to introduce myself as your local real estate agent, Kristen Ashcraft. As someone who grew up in Southwest Montana, I am committed to helping my community navigate the real estate market with ease and confidence.

My goal is to provide exceptional service to each and every client I work with, whether they are looking to buy their first home, sell their current property, or make a real estate investment. With years of experience in the ranching and agricultural industry and a deep understanding of the local market, I am well-equipped to guide you through every step of the process and help you achieve your real estate goals.

As your local real estate agent, I believe in building lasting relationships with my clients based on trust, honesty, integrity and mutual respect. I am passionate about helping you find the home of your dreams or selling your property for the best possible price, and I will work tirelessly to make sure that your real estate journey is a success.

So, whether you're looking to buy, sell, or just have questions about the real estate market in our community, don't hesitate to reach out to me. I'm excited to get to know you and help you achieve your real estate goals.

*Kristen Ashcraft*

Realtor®

ResoluteRoots406.com

406-596-2010

Kristen@ResoluteRoots406.com



**Community Events**

**May/June 2023**

| Sun                                   | Mon                   | Tues   | Wed  | Thurs                        | Fri   | Sat   |
|---------------------------------------|-----------------------|--|--|------------------------------|---|---|
|                                       | May 15 <sup>th</sup>  | 16<br>Music Trivia @<br>Lu's Lost Cabin<br>Bar in Twin<br>Bridges 7pm<br>Dart night @<br>RV Brew 6pm | 17<br>Ruby Valley<br>Brew – Trivia<br><u>Night 6:00pm</u><br>Twin Bridges<br>Food Pantry<br>10am-3pm | 18                           | 19<br>Line Dancing @<br>the Vault (Lost<br>Cabin) in TB<br>5:30pm | 20  |
| 21<br>Falcon HS<br>Graduation<br>2pm  | 22                    | 23<br>Music Trivia @<br>Lu's Lost Cabin<br>Bar in Twin<br>Bridges 7pm<br>Dart night @<br>RV Brew 6pm | 24<br>Ruby Valley<br>Brew – Trivia<br><u>Night 6:00pm</u><br>Twin Bridges<br>Food Pantry<br>10am-3pm | 25                           | 26<br>Line Dancing @<br>the Vault (Lost<br>Cabin) in TB<br>5:30pm | 27<br>Virginia City<br>Poker Ride and<br>Walk 8am           |
| 28<br>Panther HS<br>Graduation<br>1pm | 29<br>memorial<br>DAY | 30<br>Music Trivia @<br>Lu's Lost Cabin<br>Bar in Twin<br>Bridges 7pm<br>Dart night @<br>RV Brew 6pm | 31<br>Ruby Valley<br>Brew – Trivia<br><u>Night 6:00pm</u><br>Twin Bridges<br>Food Pantry<br>10am-3pm | JUNE 1 <sup>st</sup><br>JUNE | 2<br>Line Dancing @<br>the Vault (Lost<br>Cabin) in TB<br>5:30pm  | 3<br>Garage-A-Rama<br>Mad Cou<br>Fairgrounds<br>9am         |
| 4                                     | 5                     | 6<br>Music Trivia @<br>Lu's Lost Cabin<br>Bar in Twin<br>Bridges 7pm<br>Dart night @<br>RV Brew 6pm  | 7<br>Ruby Valley<br>Brew – Trivia<br><u>Night 6:00pm</u><br>Twin Bridges<br>Food Pantry<br>10am-3pm  | 8                            | 9<br>Line Dancing @<br>the Vault (Lost<br>Cabin) in TB<br>5:30pm  | 10  |
| 11                                    | 12                    | 13<br>Music Trivia @<br>Lu's Lost Cabin<br>Bar in Twin<br>Bridges 7pm<br>Dart night @<br>RV Brew 6pm | 14<br>Ruby Valley<br>Brew – Trivia<br><u>Night 6:00pm</u><br>Twin Bridges<br>Food Pantry<br>10am-3pm | 15<br>Sunflowers             | 16<br>Line Dancing @<br>the Vault (Lost<br>Cabin) in TB<br>5:30pm | 17<br>Twin Bridges<br>Fly-In & Cruise<br>@ Airport -<br>9am |



**Sellers - Don't Be Surprised by Repairs**

Repairs or replacements that the homebuyer requires to be completed before closing on the sale of your home can blindside you if you're not prepared. While any unforeseen expenses are an unwelcome surprise, you'll still have to fix the problems or risk letting your buyer out of the contract and having to disclose the problems to future homebuyers.

Homebuyers have the right to have the home they're buying professionally inspected. The purpose of the inspection is to inform the buyer as to the condition, age and likely lifespan of major systems and appliances in the home. As a contingency in the contract, the buyer has the choice to proceed with the contract or ask the seller for repairs or replacements. This is fair because many issues with a home can't be seen with the naked eye. An inspection gives a rough idea of future expenditures; if there are more problems than the buyer is willing to allow, the transaction will be in jeopardy. The buyer can't help but wonder what other problems may come to light about the home.

Your Berkshire Hathaway HomeServices network professional knows that the less the buyer finds wrong, the smoother the transaction will be. Before you put your home on the market, hire a licensed home inspector to alert you to unknown problems and repair or replace them so the buyer has no misgivings. You'll also be able to ask a higher price for your home when it's in pristine condition.



Nicholette Picken  
BROKER®  
(406)698-0853  
nicholette.picken@gmail.com



Nicholette Picken  
BROKER®  
406.698.0853  
nicholette.picken@gmail.com

**CONTACT:**

- ✉ NICHOLETTE.PICKEN@GMAIL.COM
- ☎ 406-698-0853
- ♥ WWW.BHHSMT.COM