

Coming Soon!
Communities That Care
 "Neighbors helping neighbors,
 connecting people to needs."

Is there something you need, or do you have resources (time, talents, stuff) available to help neighbors in need? The RVN is launching a new section in the paper called "Communities That Care: Neighbors Helping Neighbors, Connecting People to Needs." In this section we will publish personal needs and offers of assistance. All information will be kept confidential & the participating parties will choose to offer a phone number, email, or social media account for contact. Names will not be published. This service is offered at no charge for participants.

To participate please email your request or service to rubbyvalleynugget@gmail.com, or visit Beacon Business Center, or call BBC at 842-7488. Include your request/service and preferred method of contact. Reasonable needs only please.

ZACK & TERRI MEDINA

TAYLOR REALTY

8 S. Idaho St
 Dillon, MT 59725
 406.683.4316
www.taylorrealty.com

We don't just find houses,
 we find homes.
 Let us take you home.

SERVING SOUTHWEST MONTANA
 residential | land | commercial | farm & ranch | recreation

ZackSMedina@gmail.com | 406.865.0334
 Medina.Terri@gmail.com | 406.865.0237

Tiffany Brannon
 Independent Beauty Consultant

MARY KAY

P.O. Box 324
 Twin Bridges, MT 59754
 406-559-0928

Tiffany.Brannon
<https://www.marykay.com/TBrannon2>
 Enriching Women's Lives™

Twin Bridges Dental

Embrace Yourself!

Braces, Implants, Root Canals
 Full Service Dental Office

303 N Main St
 Twin Bridges, MT 59754
 (406) 684-5080

Rocky's Roadhouse
 GREAT FOOD • GREAT MUSIC • GREAT PEOPLE

Hours:
 WED. - THURS.
 9AM - 2PM / 5PM - 9PM

FRI.
 9AM - 2PM / 4PM - 9PM

SAT.
 9AM - 9PM

SUN.
 9AM - 2PM

DINE-IN, TAKE-OUT OR LOCAL DELIVERY
 (406) 842 - 5280



WELCOME TO OUR LOCAL COMMUNITY NEWSLETTER
THE RUBY VALLEY NUGGET



Madison Valley BANK

24 Hour ATM Locations:
 Ennis • Virginia City • Harrison
 Sheridan • West Yellowstone

SINCE 1965 | ENNIS | BOULDER
 MONTANA CITY | WEST YELLOWSTONE
WWW.MADISONVALLEYBANK.COM

NCAA MARCH MADNESS

CALCUTTA
College Basketball Team Auction

Monday, March 15th, 2021
at Lou's Lost Cabin Bar in Twin Bridges
Doors Open at 5:30 p.m.
Auction Starts At 6:00 p.m. Sharp!
Final 64 - Payouts At Every Round
Free Food
Fun And Quick Auction

Sponsored by the
Twin Bridges Community Association

The Twin Bridges Community Association, a not for profit organization, strives to enhance the lives of people who call Twin Bridges "home" as well as those who visit, through beautification efforts, promoting our amenities, planning and supporting healthy events and activities that provide economic growth and entertainment for the community.

MARKET

A FAMILY OWNED AND OPERATED,
 FULL SERVICE GROCERY STORE.
 ESPRESSO BAR WITH DRIVE-THRU
 OPEN 7 DAYS A WEEK
 MONDAY - SATURDAY:
 7 A.M. TO 9 P.M.
 SUNDAY:
 8 A.M. TO 7 P.M.
 108 N. MAIN STREET
 TWIN BRIDGES, MONTANA 59754
 COFFEE SHOP PHONE: 684-5075
 MARKET PHONE: 684-5070

3 RIVERS COMMUNICATIONS

467-2535
 800-796-4567
 3rivers.net

LOST CABIN BAR

109 S. MAIN ST.
 TWIN BRIDGES, MT
 406-684-5482
 COLDEST BEER IN TOWN

KINNEY CLEANING SERVICE

CHIMNEY - VENTS - WINDOWS
 DRYER VENT CLEANING - DUCT CLEANING
 ENJOY CLEANER AIR!
 GARY KINNEY
 406-702-5372
 CELL: 406-596-7003
 P.O. BOX 305
 VIRGINIA CITY, MT 59755

BERKSHIRE HATHAWAY HomeServices
 Montana Properties

Frank Colwell, Broker
 118 S. Main Street
 Sheridan, MT 59754
 406.596.1076

RUBY VALLEY BREW
 REMAIN UNTAMED™

111 S. Main Street
 Sheridan, MT 59749
 406-842-5977

KENWORTHY ELECTRIC INC.

P.O. Box 56
 Sheridan, MT.

Dan Kenworthy (406) 842-5865 PH
 Cell: 596-4100 (406) 842-7373 FAX
kenworthyelectric.com

FedEx Authorized Ship Center **UPS** Authorized Shipping Outlet

BEACON BUSINESS CENTER
 203 S. Main St - Sheridan, MT 59749
 406-842-7488 - beaconbus@gmail.com

SHIPPING CENTER
 SERVING ALL OF MADISON COUNTY
FULL SERVICE

- Authorized **FedEx** & **UPS** Shipping Center
- Packing
- **FedEx** Next Day Delivery to Most of U.S.
- Packing Supplies
- Package Drop Off Center
- Package Receiving

Other Services:
 Graphic Design - Fax - Copy - Print - Scan
 Laminate - Office Supplies - Toys & Crafts
 Puzzles & More!
 Visit us online at beaconbusinessctr.com
In Business Since 2006

THE NEW KIDS ON THE BLOCK DAYCARE PRESENTS
 THE 2021
Leprechaun Dash

SATURDAY MARCH 20, 2021
 SHERIDAN, MONTANA

COME RUN WITH US!
 1 MILE, 5 KM, 10 KM
 FREE KIDS RUN

START TIME: 1:00 PM
 AT
 RUBY VALLEY BREW

Register Now at www.nkobsheridan.wordpress.com

Mountain Building Center
 Twin Bridges, MT

302 N Madison Street
 Twin Bridges, MT 59754
 TEL/FAX | 406-684-5562
 EMAIL | mbcstone@yahoo.com

Mark & Cristy Stonebraker
 2nd Generation Owners

Conn Norling
 Owner

Conn's Window Fashion

We will measure and install.
 (406) 842-5631

43 Bieler Lane
 Sheridan, MT 59749

AWAKEN WITH YOGA

Grounding within yourself to be at peace with the world

Lou Rae Hardev
 406-925-2952
lourae yoga@gmail.com
<https://linktr.ee/lourae hardev>

Available for private in-home yoga
 Insured and confidential

yo-ga noun: a Hindu spiritual and ascetic discipline, a part of which, including breath control, simple meditation, and the adoption of specific bodily posture, is widely practiced for health and relaxation.

lourae yoga
 SHIFT INWARD

PUBLISHED BY BEACON BUSINESS CENTER ~ 406-842-7488
rubbyvalleynugget@gmail.com - www.beaconbusinessctr.com
 Authorized FEDEX & UPS Shipping Center Supplies
 Toys - Crafts - Puzzles - Office Supplies - Copy - Fax - Graphic Design - and more...

RUBY VALLEY HAPPENINGS

CHECK OUT OUR NEW COMMUNITY EVENTS CALENDAR AT BEACONBUSINESSCTR.COM

See all Ruby Valley events in one convenient location. Contact us if you would like to add an event.

FREE BLOOD PRESSURE MANAGEMENT TELEHEALTH WORKSHOP: Noon - 1:30 PM every Monday through March 12th. Help manage hypertension by focusing on nutrition, physical activity, stress management and, more. Participants will receive a free electronic blood pressure monitor. For more information or to sign up, call the Madison County Health Department at 406-843-4295.

BAKE SALE: SHERIDAN - Bake Sale is scheduled for Sunday March 14th at the Sinclair gas station in Sheridan. The bake sale is a fundraiser for the Sheridan Easter Festival that will be held at the Kiwanis Park. Everything is strictly donated for the bake sale. Fingers crossed we can make it happen for all the kiddos in the valley. If anyone has questions give Kim Nixon a call at 406-596-7077.

TWIN BRIDGES ROTARY CLUB: The Rotary Club of Twin Bridges will be hosting a Zoom "legislative update" with Mr. Ken Walsh, a representative for the House of Representatives, District 71. The date is Tuesday, March 23rd, Zoom begins at 6 pm. If you would like to join, email Laurie Bartoletti at laurie.bartoletti@sheridan.k12.mt.us

MONTANA HUNTING AND FISHING LICENSE YEAR BEGINS: Hunters and anglers can buy licenses and apply for permits at <https://fwp.mt.gov> beginning at 5 AM on March 1st. Click on "Buy and Apply". Most FWP offices will be open from 8 AM to 5 PM, Monday through Friday.

PUBLIC LIBRARY EVENTS: SHERIDAN - Newspaper History Group - Tuesday mornings at 9 AM. **Knitting Group** - Thursdays at 2 PM. For more information call 406-842-7981. | **TWIN BRIDGES** - The Library is remodeled and open! | **VIRGINIA CITY - Thompson Hickman** - Story and Craft every Tuesday at the Meeting Hall on Idaho Street, VC at 10:30 a.m.

TOWN COUNCIL MEETINGS: Twin Bridges - Second Tuesday of each month at 7 p.m. Call 406-684-5243 for meeting access information. | **Sheridan** - Second Monday of each month at 6 p.m. 842-5431.

SCHOOL BOARD MEETINGS: Sheridan - Second Tuesday of each month at 7 p.m. - CB Murray Media Center, Zoom option provided on each agenda, found at Sheridan.k12.mt.us | **Twin Bridges** - Second Tuesday of each month at 7 p.m. - Conference Bridge Call-in number: 406-467-1555, Participant Code: 437988 - **Alder** - Second Thursday of each month at 5 p.m.

LOU RAE YOGA: SHERIDAN - #18 7M-4R Rd., Just past Vigilante Construction, Sheridan - Yoga Classes - March 5th, 12th & 19th at 9 am. Oula Intro Dance - Fri., March 12th at 10:30 am. **ENNIS** - 113 South 1st St, at River Studio- Yoga Classes - March 6th and 20th at 9:30 am. Oula Dance - March 6th at 11 am. \$10 drop in, and 3 class punch cards for \$35. EveryBODY is welcome. All inclusive yoga community. All March proceeds go to the Feed the People DXT Mutual Relief in TX for their blackout crisis.

AMERICAN LEGION: Sheridan Post 89 - Second Wednesday of every month at 10 a.m. to 2 p.m. a VA Service Officer will be on hand to assist veterans with VA issues.

TWIN BRIDGES ALL YEAR FARMERS MARKET: Saturdays from 9 AM - 1 PM at the Twin Bridges Fairgrounds in the Round Building. Essential Oils & Friendship Jewelry, Scentsy, Bakers, Candy Makers, Crochet, Knitting, Jewelry Makers, Candles, Jams & Jellies, Woodworkers, Local Landscape Pictures on Canvas-Some Framed, Home Decor and More! Vendors vary each week. Suitable face covering required and temperature checked at the door. 406-596-1978 or twinbridgesfarmersmarket@gmail.com

MOUNTAINVIEW CHAPEL HIGH SCHOOL YOUTH GROUP: Every Wednesday at 7 PM. 515 N. Main St., Twin Bridges. 406-684-5217

RUBY VALLEY BREW: Trivia Night Every Wednesday Night from 6 p.m - 8 p.m. **Live Music:** Steve Rose - March 5th @6 PM

RUBY VALLEY FOOD PANTRY: Food is distributed on Saturday mornings from 10-12 at Valley Assembly Church - 114 N. Main - Sheridan

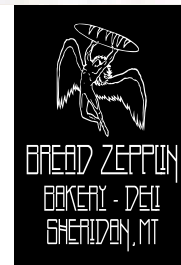
3 RIVERS FAMILY CHURCH is now 3 RIVERS WORSHIP CENTER: Come and experience TRUE Worship in a non-denominational setting every Sunday at 10:30 am at 3648 MT-287. Family friendly. No religion, just relationship. (406) 570-7181

VIRGINIA CITY ELKS LODGE #390: Happy Hour Every Friday and Monday from 5-10 p.m. Every Sunday at 10 AM through March 28th Brunch and Bingo. \$9 Brunch. \$5 Bingo for 3 cards. Public is welcome! Observing Social Distancing. 406-660-1559

ROCKY'S ROADHOUSE: Live Music: Dan Henry - March 5th @ 6 PM

CHICKS BAR: Poker Night is back! Friday's & Saturdays from 7:30 p.m. to close. Up to \$200 buy in.

If you have a event you would like us to help you promote, please let us know.
www.rubyvalleynugget@gmail.com



We open at 8 a.m. with our signature Grab n' Go Breakfast Burritos, Cinnamon Rolls, and Pastries

Our lunch features daily specials and sandwiches crafted on fresh homemade bread.

Starting at 4 p.m., we serve traditional "Italian Style" pizzas, cooked in a Stone Oven, with light sauce and toppings, on our homemade dough.

OPEN TUESDAY - SATURDAY
8 a.m. to 8 p.m.
Pizza is Served 4 p.m. to 8 p.m.
406-842-7777
109 S. Main - Sheridan, MT
breadzeppelin406.com

THE CABINET STOP
CABINETS & COUNTERTOPS

Locally owned and operated. Serving SW Montana. Offering free 3D layout and quote. No job too big or small!

For more information call Sunny Harmon at: **406-925-0647**

SPC CONSTRUCTION LLC

Sean Phillips, General Contractor

New Homes, Additions, Log Structures, Rustic Styles, Chinking, Consulting

Home: 406-684-5509 Cell: 406-596-9403

Dale Giem
Your Local LPL Financial Advisor

LPL Financial

Stop in, Visit Online or Call today!

230 E Glendale St. Dillon, MT. 59725
Ph. 406-988-0733
www.dalegiemlpl.com

Securities offered through LPL Financial, Member FINRA/SIPC

Alder Creek
Coffee Roasters

117 North Main Unit D
Sheridan, MT
www.aldercreekcoffee.com
Hours - 7 a.m. to 3 p.m.

Alison's Pantry

CAROL & CANDY WILCOX
819 MIDDLE ROAD
TWIN BRIDGES, MT 59754
CAROL - 684-5142
CANDY - 599-5609

LMCH Construction & Building Materials
your home, from the outside in

Gary T. Caprara
DESIGN - INSTALLATION - SALES
(406) 580-1574 - FAX (406) 458-0138
lonemountain70@yahoo.com
www.crestwoodinc.com www.canyoncreek.com

Ready for a real home office?

Create your Space

HELOC makes your house work for you

HighPeaksFCU.com

Sheridan 406-842-5372 Dillon 406-683-4373

Loans subject to approval. NMLS #695851 Federally insured by NCUA. HPF-039c.1

SHERIDAN FIREFIGHTERS ASSOCIATION

In Support of
Sheridan Fire Department Rural District #4

The Board of Directors for the Sheridan Firefighter Association elects new officers and welcomes new Board Members!

Ted Woirhaye, Chairman
Dan Kenworthy, Vice Chairman
Ginger Galiger, Secretary/Treasurer, New Member
Ben Hitchcock, Member
Dawn Marie Dickson, New Member
Mike Dietrich, Member
Rob Tipton, Member

Thank You for Supporting Our Capital Campaign to Build a New Fire Station for our Community.

Our new facility will encompass 7,800 sq. ft.
For more information please call (406) 596-4100 or (406) 925-1724

CHICK'S BAR POKER Nights



\$20 BUY IN

POKER NIGHT IS BACK!

Friday's - 7:30 p.m. to Close
Saturday's from 7:30 p.m. to Close

UP TO \$200 BUY IN!

CHICK'S BAR - ALDER, MT

For More information call 406-842-5366



MCNHF
MADISON COUNTY NURSING HOMES FOUNDATION

*"Investing in the Lives of our
Aging Community Members"*

The Madison Valley Manor
Ennis, Montana
Tobacco Root Mountains Care Center
Sheridan, Montana

*Thank You to All Our Donors,
Businesses, Family and Friends
for All You Do to Make Us Who We Are.
Best Wishes to Everyone for a Very
Happy & Healthy New Year!*

406-925-1724
mcnhomesfoundation@gmail.com
P.O. Box 481
Ennis, MT 59729



NOVICH INSURANCE

novich@montaininsurance.net
PO Box 394 / 104 W 4th Ave
Twin Bridges, MT 59754
P: (406) 684-5264 / F: (406) 684-5701

Tyler Holland
Pete Novich
Joy Day
Kathy Schafer
Nikki Picken




"Your locally, family owned fuel distributor"

2 convenience store locations
Norris & Sheridan
Delivering fuel in Madison & Jefferson counties

Main office: 685-3379
Sheridan store: 842-5478
Norris store: 685-3361

STORAGE CONTAINERS & DRAWER SYSTEMS NOW AVAILABLE!



IT'S TIME TO GET ORGANIZED!
COME SEE US AT

BEACON BUSINESS CENTER
203 S. MAIN - SHERIDAN, MT
842-7488

Bring Home Hearty



Fresh & delicious home cooking to-go.
Serving up pastries, hot meals, and frozen suppers.
Find weekly specials on our website.

INDOOR AND OUTDOOR DINING

www.theshovelandspoon.com
MON, TUES, WED 11-2 and THUR & FRI 11-7
108 N. Main Street | Sheridan, MT | 842-7999



Judy Siring
108 S. Washington
Dillon, Montana 59725
Ph: 406-683-2365
Cell: 406-680-0335
Fax: 406-683-6838
jsiringagency@bresnan.net

A Montana Company.
Over 50 Locations To Serve You.
www.fumico.net

SINCE 1915



HARSHBARGER
LAW FIRM

Highest quality representation with a hometown feeling...
Practical wisdom...trusted advice, for all of
Southwest Montana.

LORI DWYER HARSHBARGER - RUSSELL MICHAELS
www.harshbargerlawfirm.com
(406) 287-7933
(406) 683-6151




ROCKIN'S
BUSINESS SERVICES LLC

PO Box 156 Sheridan MT 59749
406-682-7769 406-842-7778
Cell: 406-581-3818 Fax: 406-281-7242

Melody@rockinstax.com WWW.Rockinstax.com


FOR ALL YOUR CONSTRUCTION, HARDWARE AND FARM/RANCH NEEDS!!!!



IMOC
BUILDING SUPPLIES
SHERIDAN, MONTANA
406.842.5643

LUMBER - HARDWARE - FEEDS - LAWN/GARDEN - FARM/RANCH

www.imocbuildingsupplies.com



2021 Seasonal Positions

Virginia City, Montana
SEASON: May 29th – September 6th SALARY: \$11.28 - \$13.53 Hourly
FREE HOUSING AVAILABLE

HOW TO APPLY:
www.statecareers.mt.gov
-Click on Career Opportunities
-Type Virginia City under Location
-Select a position to apply for

Contact with Questions
Montana Heritage Commission
406-843-5247
MHC@mt.gov

HOUSEKEEPER
(1 position available)
Vacation rentals in Virginia City

- Laundry
- Change bed linens
- Collect trash
- Cleaning / wash windows

GROUNDSCAPE
(1-2 positions available)

- Mow/weed whack around state-owned properties
- Clean bathrooms and collect trash
- Perform routine maintenance of grounds and facilities
- Fill in driving the train when needed

COLLECTIONS DEPT. CUSTODIAN
(1 position available)

- Wash windows, dust and sweep displays
- Clean & handle artifacts

VILLAGE PUMP CUSTOMER SERVICE ASSOCIATE
(1 position available)

- Use point of sale system to sell merchandise and fuel
- Give out info on history and area attractions

VISITOR SERVICE ASSOCIATES
(10 positions available)
Working at Virginia City Depot, Nevada City Museum, River of Gold Panning Experience, and the Alder Gulch Shortline Railroad

- Sell tickets/passes for NC Museum, Railroad and River of Gold Panning
- Use a register and credit card machine to collect sales
- Greet visitors and give out information on history regarding the area and attractions



Get 8 weeks of FREE patches, gum or lozenges
SHIPPED STRAIGHT TO YOUR DOOR!



GRAHAM DRILLING
SHERIDAN, MT

Water Well Drilling, Pump Sales
Installation, Service & Repairs.
Phone: (406) 842-5214
GRAHAMDRILLING.COM



ODYSSEY
DEPENDABLE COMPUTER REPAIR

PC, MAC AND SERVER REPAIR,
IT SUPPORT, BUSINESS SECURITY AND CAMERAS
FOR HOME OR RANCH

WWW.COMPUTERSMT.COM
(406) 992-4093



**STEPPING STONE
MARKETING
& WEB DESIGN**

mystepingstonstonepro.com

The Next Step For Your Organization
Website Development, Graphic Design & More....

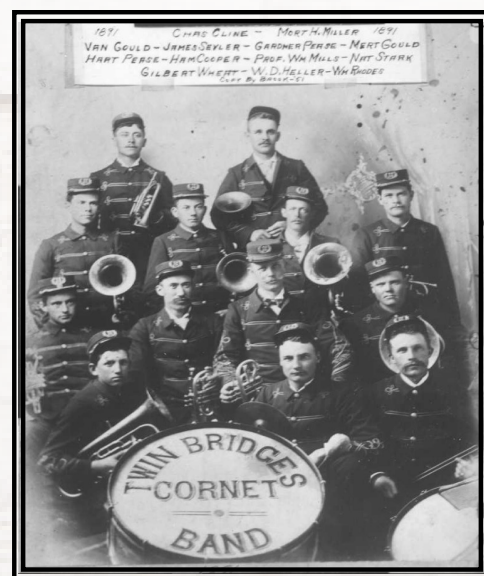
406-561-0249 raechelstone@outlook.com Raechel Stone

CORNET BAND HISTORY

"In that time before electric powered sound systems and studio prerecordings, if people wanted music, they made it themselves. Bands comprised of area citizens provided the accompanying tunes to the various outdoor activities and celebrations of that era. One of the more popular of these bands in the years following the Civil War were the "cornet bands," with the instrumentation of these groups consisting of varying types of brass instruments collectively referred to then as cornets. What served them well in those pre-electrical days was that the cornet band could be heard over a great distance without amplification." (Jerry Eident, When Cornet Bands Made the Music, 5/2/2016, Effingham Daily News).

In 1900, Montana boasted a large number of cornet bands (60-99 bands per million inhabitants). Sheridan, Twin Bridges, and Rochester all had cornet bands here in the Ruby Valley. They played at baseball games and holiday celebrations. They also played for balls, weddings, funerals, and many other gatherings. On Christmas day, they would rent a horse and carriage and play throughout the streets of town. The writers of The Madisonian often mentioned that Virginia City ought to have a cornet band but there is no evidence that they got a group together. Women were typically not allowed to join. The Sheridan Silver Cornet band was a self-supporting institution founded by H.B. Jennings. There were often fundraisers in the form of plays and concerts held to help support the band. Orlie Thompson was once a member of the group and he became teacher and conductor of the State Orphans' Home Band at Twin Bridges, which traveled over the state and won honors in competitions.

The Dillon Tribune describes Sheridan's Memorial Day celebration in 1893, "The flowers were strewn in profusion making the cemetery look like a flower garden. 'Fall in' was called and the line of march was taken to return, headed by the Silver Cornet band. Marching directly to the Methodist church. After the beautiful service of the G. A. R. (Grand Army of the Republic, a Union Army Veterans organization, who had served in the American Civil War), Rev. Geo. Comfort followed with an address, which was full of interest and patriotism from commencement to close. The services were closed by a song, entitled 'They Will Never March Again.' The Sheridan Silver Cornet band did themselves proudly that day, having practiced but about 5 weeks, yet they were ready whenever called upon to discourse sweet music." The Twin Bridges Cornet furnished music for the Thanksgiving Ball in Whitehall in 1893. All of the local cornet bands also played during the Fair yearly.



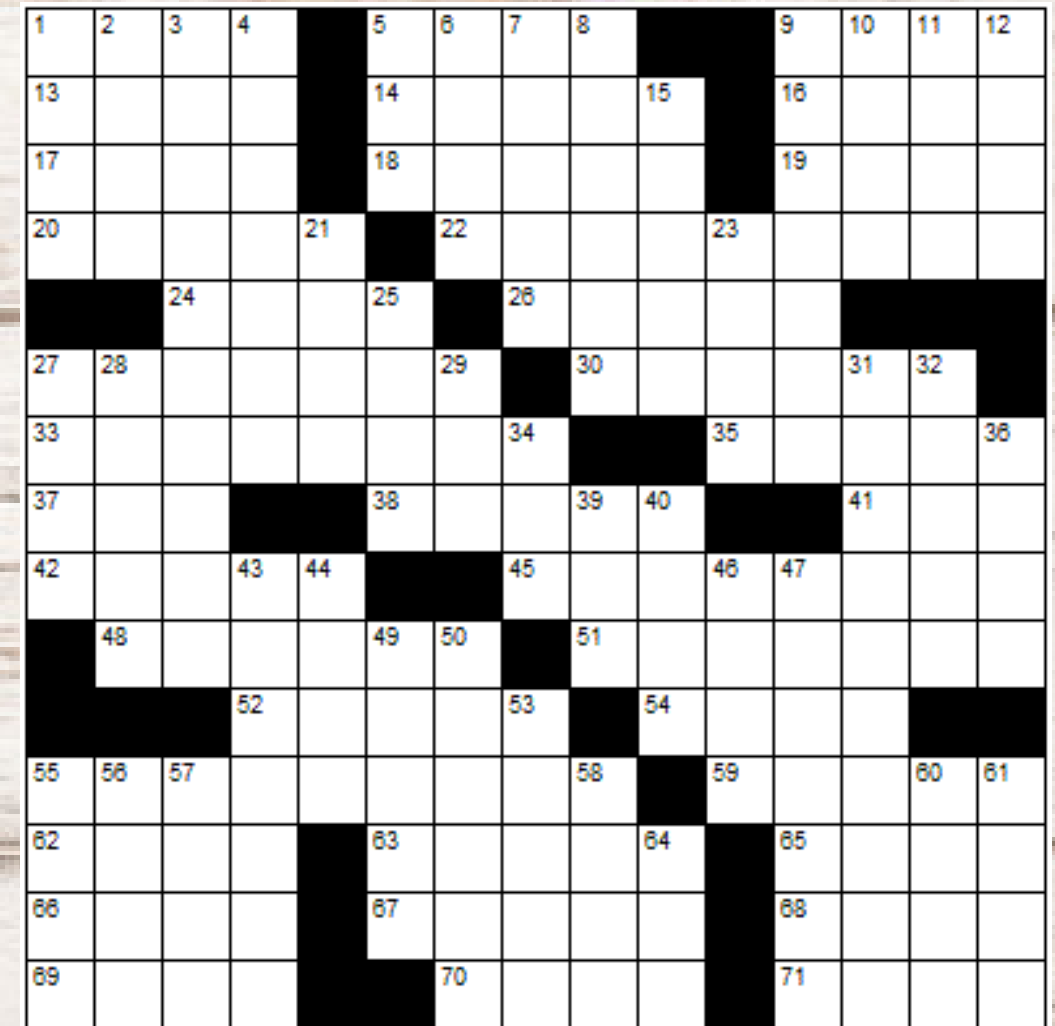
LAST ISSUE ANSWERS

| | | | | | | | | | | | | | |
|---|---|---|---|---|---|---|---|---|---|---|---|---|---|
| E | D | E | M | A | C | A | M | S | S | N | A | G | |
| P | A | V | E | S | O | B | I | T | T | O | G | A | |
| I | D | E | A | S | A | R | E | A | O | V | A | L | |
| C | O | N | N | E | C | T | I | N | G | N | A | M | E |
| T | U | R | D | E | M | E | S | I | S | | | | |
| S | C | A | B | B | A | G | D | I | M | | | | |
| L | O | C | I | I | C | E | S | T | A | S | T | Y | |
| A | I | R | S | I | C | K | E | Y | E | S | O | R | E |
| B | L | E | S | S | S | I | R | E | O | D | I | N | S |
| E | L | K | N | E | T | N | A | G | S | | | | |
| F | L | A | X | E | N | S | N | I | P | | | | |
| E | A | S | T | I | M | P | A | S | S | A | B | L | E |
| A | N | T | I | V | I | E | D | A | R | I | E | L | |
| S | A | I | L | E | C | C | E | L | I | B | E | L | |
| T | I | R | E | S | E | T | S | M | A | S | K | S | |

ACROSS

1. Fathers
5. Urarthritis
9. A small wooded hollow
13. Way out
14. Shot from a bow
16. Double-reed woodwind
17. As well
18. Lava
19. Killer whale
20. Darlings
22. Water tight
24. Tears
26. Water vapor
27. Marked by stripes
30. In a forward direction
33. More pleasantly warm
35. Horse
37. A large vase
38. Short person
41. African antelope
42. Loose-fitting
45. Fierceness
48. Announce
51. Rifle knife
52. S-shaped moldings
54. Distribute
55. Apparently
59. Scrawny one
62. Streetcar
63. Ancient Celtic priest
65. Fit
66. Brute
67. Leaky
68. French for "State"
69. Publicize
70. To be, in old Rome
71. D D D D

CROSSWORD PUZZLE



DOWN

1. Defunct
2. Spindle
3. Randomize
4. Fables
5. A leg (slang)
6. By mouth
7. Prods
8. Chief ingredient in ketchup
9. Welcome mat
10. River of Spain
11. Mentally irregular (slang)
12. Foliage
15. Arouse
21. Petty quarrel
23. Bears' hands
25. Slip
27. Counterfoil
28. Synagogue scroll
29. A type of evergreen tree
31. Rejuvenate
32. Compacted
34. Uncooked
36. Powdery dirt
39. Thorax protector
40. Deception
43. Eyelet
44. A directional antenna
46. Colors
47. Saw-toothed
49. Loans
50. A unit of temperature
53. Slips
55. "Cut that out!"
56. Therefore
57. Hearing organs
58. Puppy sounds
60. Wings
61. Obtains
64. Coloring agent

QUALITY HORSE HAY
SHERIDAN, MONTANA

ALFALFA/GRASS

85-90 BALES
25 BALES P/TON

\$160 P/TON -OR- \$8.00 A BALE

CALL: 406-842-5944 / 406-596-3034
PLEASE LEAVE MESSAGE



Questions? Text or Call 406-460-1559

BRUNCH AND BINGO

Sundays
Jan. 17-March 28, 2021

AT
Virginia City Elk's Lodge

Brunch \$9
Bingo \$5 for 3 cards

10 AM Brunch
Bingo following Brunch

GREAT FOOD AND FUN FOR ALL!

Made with PositivityWall.com
Limited seating for Distancing + Food Service observed

Steve's Handyman Service

Call or Email for Free Quote
Carpentry - Repairs - Small Jobs
Custom Welding - Dry Wall - Painting

Phone: 406-579-8716

Email: smjones1432@gmail.com

Trails End Land Company

Jim Kaatz
Broker/Owner
PO Box 645
101 S. Main Street Sheridan, MT 59749
Phone: 406-842-5960
Cell: 406-596-1060
Email: vigilant.jk@gmail.com

HOME PARK ASSISTED LIVING

842-5133
homeparkassistedliving.com
504 RAY LANE
SHERIDAN, MONTANA

Spiffy Biffy Portable Toilets Inc.

Gary & Heather Caprara

PHONE: 406-596-0593
406-580-1574
spiffybiffyportables@gmail.com

FOR SALE

Alfalfa Hay, Small Squares.
2nd Cut. No Rain. No Mold.
Covered.
\$225/ton or \$15.00/bale.
Call Travis 406-546-1479

Located above the
Twin Bridges Library.

Open every Tuesday 11am to 2pm.

Contact:
Coree Martin, 596-1978
Jen Mulvihill, on Messenger
Or our Facebook page.

Available for
ALL Madison County
families in need.

JT'S CONSTRUCTION LLC

TWIN BRIDGES, MT
406-925-0615
SPECIALIZING IN NEW HOME CONSTRUCTION
AND QUALITY REMODEL AND REPAIR

ALLHANDS AUTO CLINIC, LLC

3565 Hwy 287
SHERIDAN, MT 59749
406-842-7155
FULL SERVICE DIAGNOSTIC AND REPAIR CLINIC
M-F 7:30AM TO 5:00PM

ROBERT ALLHANDS, OWNER 406-596-0502
BRADLEY ALLHANDS, OWNER 406-596-5040

RUBY VALLEY MEATS

MONTANA PASTURE
RAISED NATURAL BEEF

117 N. MAIN STE A
SHERIDAN, MT
406-596-1205

www.rubyvalleymeats.com
beef@rubyvalleymeats.com

The Ruby Valley Medical Center is accepting applications for full-time, Registered Nurses. We have a dynamic and supportive nursing team. Join us!

Please visit our Career Opportunities page at www.RVMC.org for more information or to apply on-line.

Ruby Valley Medical Center is an equal opportunity employer and provider

3 RV hookup spots available plus bonus guest room in Twin Bridges.

Call Sherry Meyers at 406-684-5446 for more details.

NOW HIRING

Home Park has openings for full time personal care assistant, possible full time chef (40 hours/week) and part time personal care assistant (20-32 hours/week) employment. Please understand that we are staffed 24/7/365, so full time and part time employees must be available to work weekends and holidays. This very challenging, but rewarding opportunity requires you to be a part of a close team of caregivers who make it a priority to take care of the people who helped build our communities. Working at Home Park Assisted Living is a great way to go home knowing that you made a positive and personal impact in someone's life. Apply with Home Park Assisted Living and help create smiles! Pay D.O.E.

Please contact HPAL for an application or call Jason at 406-980-1117 for more information.

CHURCH FOR THE WHOLE FAMILY

EVERY SUNDAY, AT 10:30 AM

JOIN THE FUN!

3R KIDZ

ROYALTY • RELATIONSHIP • REFLECTION

GRADES K - 5TH WELCOME

YOU'RE INVITED TO 3R KIDZ!
JOIN US FOR GAMES, BIBLE LESSONS, ACTIVITIES AND OF COURSE, FUN!

3 Rivers Family Church
3648 MT-287
Sheridan, MT 59749
www.3Rfc.tv
[@3riversfamilychurch](https://www.facebook.com/3riversfamilychurch)

C&E CONSTRUCTION

Local handyman dedicated to excellent personalized service.

20+ YEARS EXPERIENCE IN

- ROOF REPAIR
- PAINTING
- LIGHT CARPENTRY
- DECKS
- INTERIOR AND EXTERIOR
- SMALL REMODELS
- AND A WHOLE LOT MORE...

CONTACT AN EXPERT

Text Curt: 406-799-8400

[/aguywithahammer](https://www.facebook.com/aguywithahammer)

All jobs over \$500.00 will receive a \$50 gift certificate for

Rocky's ROADHOUSE

GREAT FOOD • GREAT MUSIC • GREAT PEOPLE

Offer expires March 7th.

CLASSIFIED AD FORMS LOCATED AT BEACON BUSINESS CENTER

To place an ad or to promote your event, please email us at rubyvalleynugget@gmail.com or call us at 406-842-7488

Sheridan School Calendar - March 2021

| SUN | MON | TUE | WED | THU | FRI | SAT |
|-----|-----|----------------------------|-----|----------------------------------|------------------------------------|-----|
| | | | | | FFA Crops & Mechanics: Conrad → | |
| | | Staff Meeting @ 7:30 AM | | | | |
| | | Board Meeting @ 7:00 PM | | | | |
| | | | | | End of Quarter 3 | |
| | | | | High School Play @ 7:00 PM | High School Play @ 7:00 PM | |
| | | | | | | |
| | | | | | | |

BENEFACTORS
TWIN BRIDGES LIBRARY
Invest in Discovery

Best Wishes to you and your family for a happy new year in a world of peace.

PHILANTHROPY
KINDNESS
Peace on Earth
LOVE

Thank you for your generous donations to help us build our new Discovery Hall. The new Discovery Hall is a remodel of an existing addition to the library. Our goal is to generate \$340,000 to build a 2,800 sq. ft. addition to create more room for social distancing, new technology, resources, classes, and exhibits. The Discovery Hall will also provide much needed space for growing the Library's circulation and archives. Thank you for your generous donations and support.

BlechaWorks-Farrier
406-546-1479
blechabusiness@gmail.com
facebook/travis.blecha.90

HEALING WATERS Lodge
TWIN BRIDGES, MONTANA

Mike & Laura Geary, Owners

270 Tuke Lane - Twin Bridges, Montana
Office: 406-684-5960
Mike's Cell: 406-459-2030 Laura's Cell: 406-459-5582
www.hwllodge.com hwllodgmt@gmail.com

Opportunity Bank OF MONTANA

YOUR LOCAL BANK. YOUR OPPORTUNITY.

SHERIDAN • 406.842.5411
TWIN BRIDGES • 406.684.5678

FDIC OPPORTUNITYBANK.COM

Tobacco Root Mountains Care Center

Phone: (406) 842-5600
Fax: (406) 842-5419

326 Madison
P.O. Box 308
Sheridan, MT 59749

ENNIS HOME FURNISHINGS

MATTRESSES, APPLIANCES, FURNITURE, ELECTRONICS

ennishomefurnishings.com | Office: 406-682-3250 | 120 W Williams St
order@ennishomefurnishings.com | Fax: 406-682-3231 | Ennis, MT 59729

SUDOKU PUZZLE

| | | | | | | | |
|---|---|---|---|---|---|---|---|
| | 3 | 7 | | | 1 | | |
| 9 | | | | | | 5 | 3 |
| | 6 | 8 | | | | | 4 |
| 6 | | 9 | | | 8 | | |
| | | | 4 | | | | |
| | | 5 | | | 6 | | |
| 1 | | | 5 | | 7 | | |
| 7 | 2 | | | | 4 | 6 | |
| | | | | 7 | | | 1 |

Twin Bridges Public Schools March 2021

| Sun | Mon | Tue | Wed | Thu | Fri | Sat |
|-----------------------------|--|---|-----------------------------|------------------|------------------|--------------------------|
| | | 1 Cross Country Ski Trip, gr. 4 & 5 | 2 6pm Booster Club Mtg | 3 | 4 | 5 |
| | 7 | 8 7pm REG BOARD MTG (MT room / conf. call) | 9 | 10 Basketball | 11 State Tour | 12 nament (Bil lings) |
| Daylight Saving Time Starts | 14 BPA State Leadership Contest (virtual) | 15 | 16 St. Patrick's Day | 17 | 18 | 19 |
| | 21 | 22 | 23 End 3rd qtr | 24 | 25 | 26 |
| 28 | 29 | 30 | 31 | | | |

print-a-calendar.com

PIVOTS PLUS

1045 Selway Dr. Dillon, MT 59725
OFFICE: 406-683-4418
www.pivotsplusllc.com

Certified Irrigation Design
Pivots, Pumps, Mainline, Hand Line, & more!
Factory Trained Valley Service Technicians

Parts Outlets:
D&D Auto—Ennis and IMOC—Sheridan

PERFORMANCE FAB WORX ANDREW BRAACH

CUSTOM WELDING
CNC PLASMA CUTTING
SIGNS
MOBILE REPAIR
AUTOMOTIVE REPAIR
CUSTOMIZATION
DIFFERENTIAL REBUILD

406-498-0471
P.O. Box 393
TWIN BRIDGES, MT 59754
PERFORMANCEFABWORX@GMAIL.COM

ANSWERS FROM LAST ISSUE

| | | | | | | | | |
|---|---|---|---|---|---|---|---|---|
| 1 | 8 | 3 | 4 | 2 | 6 | 7 | 5 | 9 |
| 7 | 2 | 9 | 5 | 8 | 1 | 4 | 6 | 3 |
| 4 | 5 | 6 | 3 | 7 | 9 | 8 | 1 | 2 |
| 2 | 3 | 8 | 6 | 9 | 4 | 5 | 7 | 1 |
| 6 | 7 | 5 | 8 | 1 | 3 | 9 | 2 | 4 |
| 9 | 1 | 4 | 7 | 5 | 2 | 3 | 8 | 6 |
| 5 | 6 | 2 | 9 | 3 | 7 | 1 | 4 | 8 |
| 8 | 9 | 1 | 2 | 4 | 5 | 6 | 3 | 7 |
| 3 | 4 | 7 | 1 | 6 | 8 | 2 | 9 | 5 |



**Thank you very much for supporting
the Ruby Valley Medical Center and
the Ruby Valley Healthcare Foundation**

**MARK YOUR CALENDAR FOR
OUR ANNUAL EVENT
Saturday, August 21, 2021**

Special thanks to Tony and Amie James
for allowing us to use the beautiful round barn, Hamilton
Ranch, Twin Bridges, MT.

The Ruby Valley Healthcare Foundation is dedicated to enhancing and supporting the vital role and mission of the Ruby Valley Medical Center which provides quality healthcare to area residents and visitors. We develop and manage private support to assure the Ruby Valley Medical Center's financial integrity and high level of professional service.



COVID-19 Vaccine Update

The Ruby Valley Medical Center, as of February 18, 2021, has administered over 224 doses (Moderna Covid-19 vaccines) to healthcare workers, congregate care residents, first responders and some of our high-risk community.

The Ruby Valley Medical Center has since worked diligently to communicate with community members who meet Phase 1B and 1C Criteria. We kindly request that individuals who meet these criteria contact us (at 842-5453 between the hours of 8 am – 5 pm Monday – Friday) with their name, phone number, age and any pertinent health information so that we can add them to our waiting list.

Phase 1C Criteria Includes:

- Frontline Essential Workers
- Persons aged 60 years and older
- Individuals residing in congregate care and correctional facilities
- Persons aged 16-59 with medical conditions not included in phase 1B that may have an elevated-risk of COVID19 complications, conditions include:
 - o Asthma (moderate-to-severe)
 - o Cerebrovascular disease (affects blood vessels and blood supply to the brain)
 - o Cystic fibrosis
 - o Hypertension or high blood pressure
 - o Immunocompromised state (weakened immune system) from blood or bone marrow transplant, immune deficiencies, HIV, use of corticosteroids, or use of other immune weakening medicines
 - o Neurologic conditions, such as dementia
 - o Liver disease
 - o Overweight (BMI > 25 kg/m2, but < 40 kg/m2)
 - o Pulmonary fibrosis (having damaged or scarred lung tissues)
 - o Thalassemia (a type of blood disorder)

As the vaccine continues to arrive, we will work quickly and steadily through the Phase1 Criteria list until we meet the needs of our community.



Help is here for you!

BEACON BUSINESS CENTER

can create your vision from business cards to invitations.

We offer a multitude of graphic design services on a project-by-project basis –keeping prices low, quality high and turn around fast.

Let our graphic designers help with:

Logo Design, Business Cards

Business Forms, Brochures, Ad Creation,

Signage Design, Flyers, Posters, Invitations

Raffle Tickets, Copy, Printing Pictures

& More!

BEACON BUSINESS CENTER

203 S. Main

Sheridan, MT 59749

406-842-7488

beaconbus@gmail.com

beaconbusinessctr.com







BERKSHIRE HATHAWAY
HomeServices

Montana Properties

Community Events

March 2021

| Sun | Mon | Tues | Wed | Thurs | Fri | Sat |
|--|--|------|--|--|--|---|
|  March | 1 st | 2 | 3 Ruby Valley Brew – Trivia Night 6:00pm | 4 | 5 | 6 Twin Bridges Farmers Market @ Fairgrounds |
| 7 | 8 | 9 | 10 Ruby Valley Brew – Trivia Night 6:00pm | 11 Mad. Cou. Plan Dept. Floodplain meeting regarding Twin & Sheridan areas in VC @ 5:30pm | 12 | 13 Twin Bridges Farmers Market @ Fairgrounds |
| 14 Daylight Savings Time!!  | 15  March Madness Calcutta Auction in Twin Bridges 5:30pm | 16 | 17 Ruby Valley Brew – Trivia Night 6:00pm SAINT PATRICK'S DAY | 18 | 19 | 20 Leprechaun Dash 11:30am Sheridan  |
| 21 | 22 | 23 | 24 Ruby Valley Brew – Trivia Night 6:00pm | 25 | 26 | 27 Twin Bridges Farmers Market @ Fairgrounds |
| 28 | 29 | 30 | 31 Ruby Valley Brew – Trivia Night 6:00pm | | Contact Nicholette if you would like your community event added to this calendar | |



Nicholette Picken
SALES ASSOCIATE
406.698.0853
nicholette.picken@gmail.com