

• Little Guy Wrestling Sign-Ups

- Tuesday, January 16
- High School Gym
- 6:00-7:00 pm
- Boys ages 4*-14
- Girls ages 4*-14
- *must be 4 by 1/1/24
- Head Coach Bo Campbell
- Bring kids to try on singlets
- \$40/first wrestler or \$75/family
- Season starts 2/13

Call 406.596.0463 or email

sheridanlittleguywrestling@gmail.com

You're Invited to GAME NIGHT!

Sheridan Senior Center
East Crofoot St
Sheridan MT
6-9pm

Jan 11 Mar 14
Feb 8 Apr 11
May 9

call (406) 207-0334

~ ALL AGES

Bring your own snacks

\$1 suggested donation per player

JANUARY 2024 - 1ST ISSUE



RUBY VALLEY NUGGET



3 RIVERS COMMUNICATIONS

PHONE INTERNET

406-467-2535
800-796-4567

3rivers.net

Madison Valley BANK

24 Hour ATM Locations:
Harrison • Ennis • Virginia City
Sheridan • Boulder • Montana City
Bozeman • West Yellowstone

Since 1965
Ennis | Boulder | Montana City
Bozeman | West Yellowstone

www.madisonvalleybank.com

MADISON COUNTY HEATING & COOLING

RESIDENTIAL & COMMERCIAL Heating & Air Conditioning

406-221-6677

the *Elling House* ARTS & HUMANITIES CENTER presents

Chautauqua

- Winter Series -

THE *Chautauqua* TRADITION OFFERS A THOUGHTFUL MIX OF CONVERSATION, ENTERTAINMENT AND APPRECIATION OF LOCAL ARTISTIC TALENTS.

SATURDAYS

Jan 20th
Feb 17th
Mar 16th
Apr 20th

6:30PM MEET & GREET
7:30-9PM PERFORMANCES
(DONATIONS APPRECIATED)

404 E. IDAHO ST VIRGINIA CITY, MONTANA
406.843.5454 406.843.5507 WWW.ELLINGHOUSE.ORG

Tobacco Root Mountains Care Center

Phone: (406) 842-5600
Fax: (406) 842-5419

326 Madison
P.O. Box 308
Sheridan, MT 59749

LOST CABIN BAR

109 S. MAIN ST.
TWIN BRIDGES, MT
406-684-5482
COLDEST BEER IN TOWN

TUKE LANE STORAGE UNITS

DON WELBORN
406-842-5713 OR
406-596-5161

PAT WELBORN
406-596-0354

LMCH Construction & Building Materials

Gary T. Caprara
DESIGN - INSTALLATION - SALES
(406) 580-1574 - FAX (406) 458-0138
lonemountain70@yahoo.com
www.crestwoodinc.com www.canyoncreek.com

Banks Industrial Services LLC

Excavation, Water/Sewer, Hauling, Welding/Portable, Equipment Rentals
Equipment Repair, Pump Repair, Used Equipment Sales

David Banks
BISLLC@hotmail.com
406-596-6049
406-684-5128

5 Rogers Road Silver Star, MT 59751

GRAHAM DRILLING SHERIDAN, MT

WATER WELL DRILLING, SOLAR PUMP SYSTEMS FOR STOCK WATER, PUMP INSTALLATION, SERVICE & REPAIRS

Serving Residential & Commercial Customers in Madison County for over 30 years

QUALITY SERVICE AT A FAIR PRICE
PHONE (406)842-5214 OR (406)682-5290
WWW.GRAHAMDRILLING.COM

THE SHACK TWIN BRIDGES, MONTANA

Pizza..Burritos..Beer..Sandwiches..Burgers..Salad Bar..16 Flavors of Ice Cream

301 N. Main 406-684-5050

NEW HOURS:
We will be closed Sunday and Monday - Open Tues-Sat -11am-8pm
Call 406-684-5050 for Daily Specials

P's Clothes Closet & More

Hours:
Wednesday: 9-2
Friday: 10-2
Saturday: 10-2

All items are **FREE** to the community!

Mens, womens, and childrens clothing, toys, household items, sheets, towel, etc.
Donations are greatly appreciated!
They can be dropped off during opens hours or by appointment by calling P @ 406-600-2983

MOUNTAIN BUILDING CENTER

TWIN BRIDGES, MT

DIAMOND KOTE Building Products Rollex

HYNDMAN CONSTRUCTION LLC

CHRIS HYNDMAN GENERAL CONTRACTOR

SHERIDAN, MT 406-451-1967

CARPENTRY & CONSTRUCTION OF RESIDENTIAL DWELLINGS, NEW BUILDS, REMODELS, CHINKING, STAINING & PAINTING

HYNDMANCONSTRUCTION@GMAIL.COM

WOODS & WATERS TAXIDERMY

"Keeping Your Memories Alive"

DAVID BLANK 920-696-3382
632 Mill Gulch Road Sheridan MT 59749

Member WTA & NTA Award Winning Work
woodsandwaterstaxidermy.com

THE RUBY VALLEY NUGGET CAN BE ALSO FOUND ONLINE AT www.beaconbusinessctr.com



PUBLISHED BY BEACON BUSINESS CENTER ~ 406-842-7488

DESIGNED BY JOETTA WETZSTEON - CONTACT: RUBYVALLEYNUGGET@GMAIL.COM - WWW.BEACONBUSINESSCTR.COM
AUTHORIZED FEDEX & UPS SHIPPING CENTER SUPPLIES
HOME DECOR - TOYS - CRAFTS - PUZZLES - OFFICE SUPPLIES - COPY - FAX - GRAPHIC DESIGN - AND MORE...

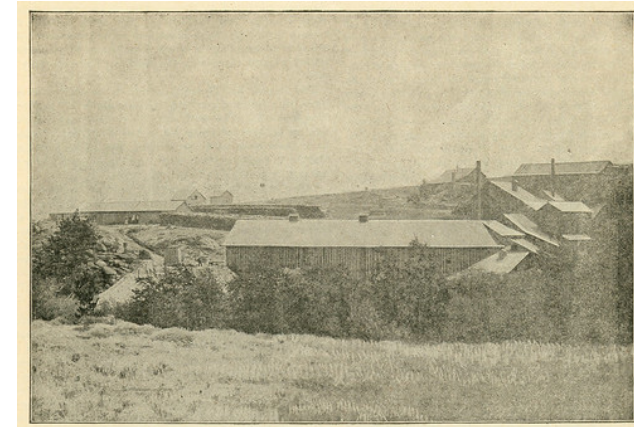
Town of Sterling & It's Mines

Sterling was once a booming quartz camp. The town was situated on Hot Spring Creek, twenty-eight miles north-east of Virginia City, between Madison and Willow Creek Valleys. A post office opened at Sterling in 1867 (October 22) with Andrew Hall as postmaster. At its peak the town of Sterling had about 600 miners and their families and was a principal station on the stage route from the Gallatin country to Virginia City. It was a short-lived community with the post office closing by 1883 (August 16). It once contained some of the finest quartz mill in these mountains.

Sterling had its beginning in the winter of 1864-65 when ten men who were prospecting for quartz lived in a small community of dug-outs. "Someone had grubstaked two miners to drive a tunnel and they had worked all winter unknowingly along the side of this rich vein [the mine called the Monitor]. Then one day, while they were outside in the sunshine eating their lunch, a cave-in occurred, exposing this vein - a regular bonanza. It was four feet in width with six inches of wire gold in the center. The ore assayed six thousand dollars a ton after all specimens were picked out and at the old price of nineteen dollars an ounce. The mine superintendent, Roger Knox, sent a sample of this ore to the World's Fair in San Francisco in 1895 and received first prize." "It took four years to mine this body of ore." The ore was hauled, seven tons a trip, to Norris, bringing coal back to the mine. "All low grade and lead matter was taken out and deposited on the dump. Ike Snodderly spent several summers, employing three or four men with slips or scrapers, gathering up this so-called waste and running it through the mill, using a cyanide process...a strip of talc ranging from two to sixteen inches in width was left hanging in the mine, assaying eighty dollars per ton. The vein was heavily loaded with gold that it was simply squeezed out into the talc." (Madison County History Association 1976) Mines began to be developed in the Sterling area in 1867 and a stamp mill was built soon after. Ultimately four quartz mills were built in Sterling and one at Midasburg, each put up by a different company. Machinery for the mills was brought in from Bozeman.



Old Mill Today



MILL OF REVENUE MINING COMPANY, MADISON COUNTY.

In 1892 the Revenue and the Monitor mines dominated the district. The Revenue mine had \$500,000 of ore in sight. The owners put in a cyanide process to catch the values of the refractory ore. The first run of 100 tons from the waste of the old stamp mill yielded a savings of 80%. The Revenue mine in 1885 had a shaft that was 230 feet down, and started new levels east and west from the shaft with six to ten feet of ore or over eight thousand tons of ore. In 1896 the cyanide mill was reducing 25-30 tons of gold ore a day, averaging \$30 a ton. The nearby Monitor carried similar ore which was to be expected since the two mines were working the same deposit. Litigation between the Revenue and Monitor companies effectively idled both the companies in 1898 until the concerns were consolidated in 1900. The Revenue reportedly yielded \$2,000,000 in gold before it became inactive in 1921.

Over \$1,000,000 was spent in developing lodes and building mills, some of which ran sporadically as late as 1913, and although profits were realized, especially after 1872, the bulk of the ore remained low-grade and averaged only \$9.00 to \$12.00 per ton.

The Midas Mill was erected at a cost of \$80,000. Years ago a goodly amount of ore from it yielded \$30 per ton in the Hyde mill which also sat at Sterling. The ore left on the dump samples \$16 per ton. The mine is now filled with water and pumping machinery will be needed to work it successfully. Previous to April of 1872, no less than \$1,000,000 was expended in building quartz mills and developing the lode. All the old enterprises were unattended with success until 1872, when better management began to show effects.

There was also a mine called the Arkansas lode. When the shaft was down thirty-five feet it had eighteen inches of \$25 of ore. The Idaho mine was also a great producer during this time. At just thirty five feet. The Galena and Midas No. 1, once owned by P. V. Jackson, was leased by Stewart & Co. They are working the Galena from a 100 foot incline, from the bottom of which a level is being run in a body of high-grade ore. Near the surface the quartz was free-milling, and G. F. Cope, who milled it in the early days, stated that it went \$150 per - ton. That produced at present is smelting ore. The character of the ore is sulphuric of iron and copper, carrying 6 ounces of gold and 10 ounces of silver.

The shipments would have been hauled with a man by the name of Bill Reel as far as Norris where it would be freighted on to Butte. Although new management at the mines of Sterling and Midasburg made the mines profitable after 1872, by 1880 the miners from Sterling were hurrying over the hills to the new camp of Richmond Flats, a few miles away. A few years later Bill Reel converted the abandoned town site of Sterling into a farm. Today the ruins of the Clark & Upson mill can still be seen along the Sterling Road west of Norris, near the site of Sterling.

RUBY VALLEY HAPPENINGS

BRUNCH & BINGO - VC ELKS LODGE - Sundays Jan 7th to March 24th - 10-11 am - Brunch 11 am to 12 pm - Bingo

BINGO AT THE STOCKMAN BAR - Jan 15th at 6:30 pm - See Ad

SHERIDAN SENIOR CENTER GAME NIGHT - Jan 11th - March 14th - Feb 8th - April 11th - May 9th - from 6-9 pm - see ad

ELLING HOUSE CHAUTAUQUA - Jan 20th - Feb 17th - March 16 - April 20th - 7:30 to 9 pm - See Ad

SHERIDAN ADULT EDUCATION PLANT CLIPPING SWAP - Feb 3rd at 10 am at the CB Murray Building - See Ad

ELLIE POTTERY CLASS - Tuesdays from 5:30 to 7:30 at CB Murray Building Art Room

TOWN OF SHERIDAN COUNCIL MEETINGS - 2ND MONDAY OF EVERY MONTH LOCATION TBA

SHERIDAN CLOSE UP INVITES YOU TO FAMILY MOVIE AND DINNER NIGHTS- SHOWING AT THE SHERIDAN ELEMENTARY - ANUARY 18 - CARS - FEBRUARY 15- FREE WILLY - MARCH 21ST - SUPER MARIO BROS - DINNER AT 6 PM AND MOVIE 7 PM - DINER AND MOVIE - \$8 PER PERSON - MOVIE ONLY - \$3 PER PERSON

WILDFLOWER MUSIC ACADEMY - Mondays-10 am (Toddler Class up to age 5) Wednesdays - 5:45 to 6:45 Children's Chorus (Age 8+) Thursdays - 5:45 to 6:30 - Youth Group Ukulele (Age 5+) Private Piano Lessons Available As Schedule Permits - Call or Text Jaeleen Munns - 406-465-5934 Country Roots - 117 N Main St Unit A - Sheridan, MT

P'S CLOTHES & MORE: Located above the Twin Bridges Library. Hours: Wednesday: 9-2, Friday: 10-2 Saturday: 10-2 - All items are FREE to the community. Call P at 406-600-2983 to donate or for questions.

LOST CABIN BAR: Monday: Open Pool Table 5-7 - Tuesday: Music Trivia 6:30 - 8 - Wednesday: Whiskey Wednesday (Discount flights and tasters) - Thursday: First Thursday of Month Ladies Night - Friday: Red (Remember Everyone Deployed) Friday. Come in or call for details - Every Monday through Friday Happy Hour 5-6 - Check our FB page for weekend specials @lostcabinbar

PUBLIC LIBRARY EVENTS:

SHERIDAN - Newspaper History Group - Tuesday mornings @ 9 AM. Knitting Group - Thursdays @ 2 PM CAREGIVER SUPPORT GROUP - First and third Tuesdays at 6 pm For more information call 406-842-7981.

TWIN BRIDGES - Twin Bridges Book Club meets every 3rd Thursday of the month at the Blue Anchor. Dinner at 6:00 with meeting at 7:00. Please email dmmontana@3rivers.net for information Accepting applications for a part time library clerk. Position will be 15 hours per week, with Wednesday being a full day and flexibility for other days. Wage depends on experience. Please inquire at Twin Bridges Public Library.

TWIN BRIDGES HELPING HANDS: Twin Bridges-MT Helping Hand Food Pantry, we aim to End Hunger in Montana. We have moved to 208 1/2 S. Main St. Wednesday's. 10am to 3pm. Call for appointment any other day or time. - 596-1978 & 233-9616

RUBY VALLEY FOOD PANTRY: Food is distributed on Saturday mornings from 10-12 @ 206 S. Main in Sheridan, MT -between gas station and post office.

3 RIVERS WORSHIP CENTER: Worship is what we are all about and we would love to have you join us. Come as you are and be blessed. Every Sunday @ 10:30 am @ 3648 MT-287. Family friendly

DEADLINE OR SUBMISSIONS TO THE RUBY VALLEY NUGGET HAS CHANGED TO 1ST & 3RD MONDAYS!

If you have a event you would like us to help you promote, please let us know.
www.rubyvalleynugget@gmail.com

SCCF / THE STOCKMAN




BINGO

MONDAY JANUARY 15 @6:30

Set your schedule and join us for Bingo Night at The Stockman
116 South Main Street Sheridan, MT.
Prepare for your luck and have fun with your friends while playing bingo and winning cash prizes.
KIDS WELCOME!
\$20.00 for 6 Cards
Drink specials

42 26
15 83 7
30 12th 44

ODYSSEY
DEPENDABLE COMPUTER REPAIR

PC, MAC AND SERVER REPAIR,
IT SUPPORT, BUSINESS
SECURITY AND CAMERAS
FOR HOME OR RANCH

WWW.COMPUTERSMT.COM
(406) 992-4093



H & M Handyman
Luis: 406-581-3148/hmhandyman@worksmt.com
Luis Hernandez
PO Box 129
Twin Bridges, MT 59754



Opportunity Bank
OF MONTANA

FDIC OPPORTUNITYBANK.COM

Friends of the TH Library

Paint & Sip



Friday, January 12th
6:30 pm – 8:30 pm
VC Gas Station

Class limited to 15 people- please contact the library to reserve a spot!
Suggested Donation \$25.00



RUBY VALLEY BREW
REMAIN UNTAMED™

Chili COOK OFF

SATURDAY, JANUARY 20th
4-6 PM

Make the best chili to win prizes

Ruby Valley Brew will be hosting our first ever chili cook-off! Bring a pot of premade chili to share for sampling. The competition will be judged by all participating customers. This event will be open to the public.


FREE TO ENTER & FREE TO TASTE

RENEGADE ⚡ ELECTRIC

Adam Davis | Dereck Short

406.596.5281
renegadeelectric406@gmail.com

SPIFFY BIFFY PORTABLE TOILETS, INC. IS NOW OFFERING SEPTIC TANK AND UNDERGROUND VAULT PUMPING SERVICES



Spiffy Biffy Portable Toilets Inc.
Gary & Heather Caprara
PHONE: 406-596-0593
406-580-1574
spiffybiffyportables@gmail.com

RE/MAX MOUNTAIN PROPERTY



106 E. Hamilton St. Sheridan \$574,900

This is a beautiful home A MUST SEE!

Visit my website at annrhineremax.com to check it out.

- 3 Bedrooms
- 2.5 Bathrooms
- 2127 Square Feet
- 2+ Car Attached Garage
- Chef's Kitchen
- Quiet Neighborhood
- Mature Landscaping
- Covered Front Porch
- Large Dog Kennel
- Incredible Enclosed Garden

Ann Rhine, REALTOR®
(406) 920-0263
annrhineremax.com

OPEN 7 DAYS A WEEK 8 A.M. - 9 P.M.

BLUE ANCHOR BAR & GRILL

DAILY SPECIALS
NIGHTLY SPECIALS

TWIN BRIDGES MT., 406-684-5655

CONTACT 596-7636 OR 539-4238

HP HOME PARK ASSISTED LIVING

406-842-5133
homeparkassistedliving.com
504 Ray Lane Sheridan, MT

MONTANA TOBACCO
QUIT LINE
1-800-QUIT-NOW

Get 8 weeks of FREE patches, gum or lozenges
SHIPPED STRAIGHT TO YOUR DOOR!

McLeod Mercantile

"Your locally, family owned fuel distributor"

2 convenience store locations
Norris & Sheridan
Delivering fuel in Madison & Jefferson counties

Main office: 685-3379
Sheridan store: 842-5478
Norris store: 685-3361

KINNEY CLEANING SERVICE



CHIMNEY - VENTS - WINDOWS
DRYER VENT CLEANING - DUCT CLEANING
ENJOY CLEANER AIR!
GARY KINNEY
406-702-5372
CELL: 406-596-7003
P.O. BOX 305
VIRGINIA CITY, MT 59755

Plant/clippings Swap

Saturday, 2/3 @ 10 a.m.

- ✓ Bring **three** plants/propagations/clippings
- ✓ Don't have any cuttings? No problem, just let us know!
- ✓ Learn about plant care.
- ✓ Class is free!

Swap will be in CB Murray Bldg.
Email sheridanadulted@gmail.com to sign up



COLOR YOUR LIFE!

UPDATE YOUR OFFICE OR WORKSPACE AT
BEACON BUSINESS CENTER!
203 S. MAIN - SHERIDAN, MT



FOR SALE: 2 sets of Draft Harnesses
1st set with leather, silver spotted harness with collar & pads.
2nd set Biothane silver spotted harness with collar & pads
\$1200.00 each
Call Steve at 406-533-5592

COLLIE PUPPIES!

Vet check, dewormed and will have 1st shots.



Abraham Yoder
406-425-2218

FIREWOOD BANK OF THE RUBY VALLEY VOLUNTEERS NEEDED!

Neighbors Helping Neighbors

A JOB FOR EVERY
VOLUNTEER,
AT ANY SKILL LEVEL

CUT - SPLIT - STACK



FOR MORE
INFORMATION
CONTACT

406-842-7392

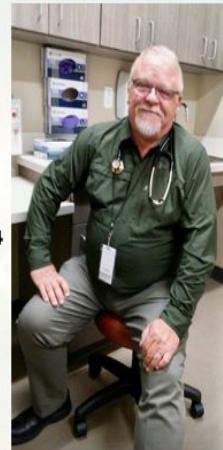
A LOCAL CHARITY

Retirement Party

After 21 years in the
Ruby Valley and
47 years practicing medicine,
Dr. Roman Hendrickson has
decided to retire!

Please come join us to say
Thank You and wish him a
Happy Retirement!

When: Saturday, January 27, 2024
Time: 12:00 - 2:00 pm
Where: Sheridan Senior Center
220 E. Crofoot Street



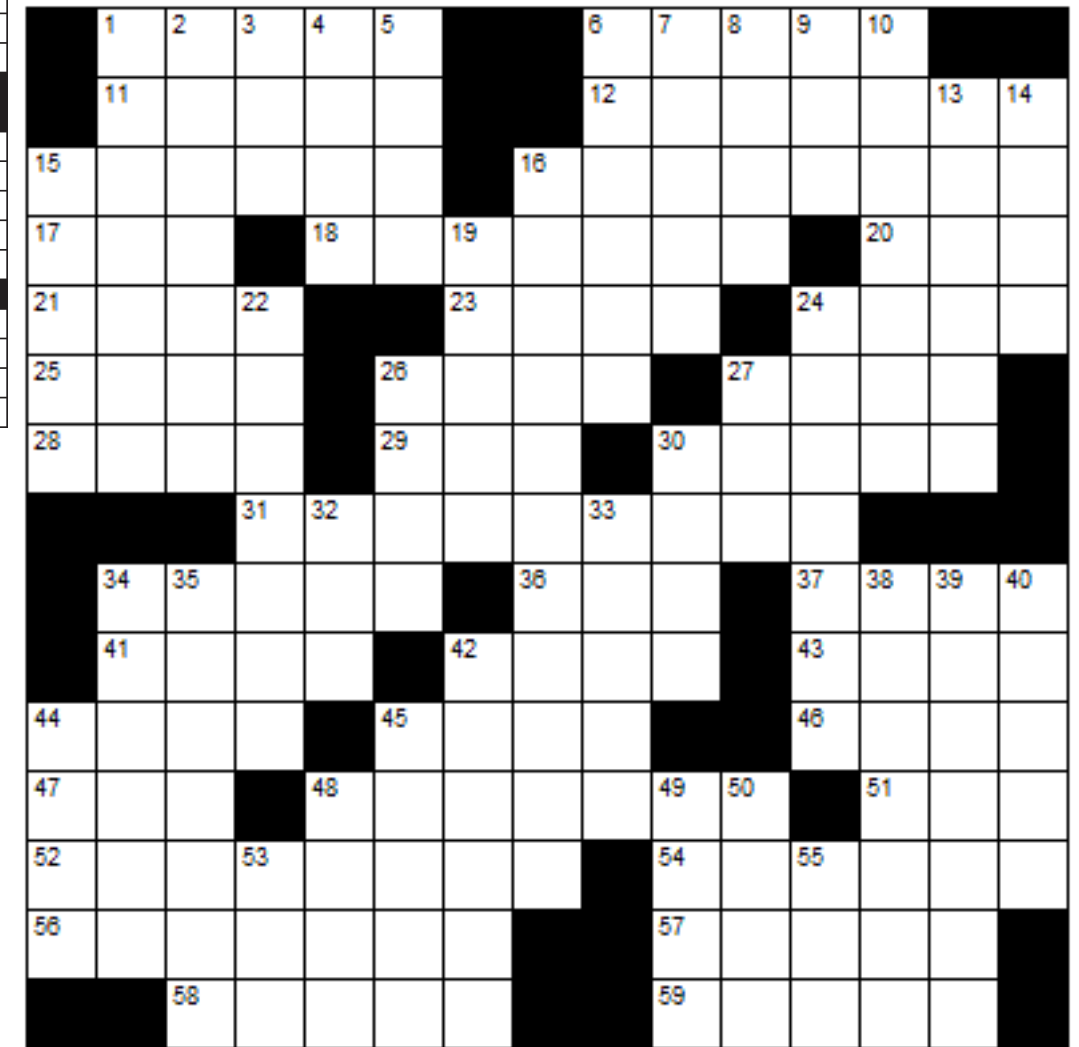
LAST ISSUE ANSWERS

C	A	R	B	E	G	S	S	P	R	A	Y		
A	R	I	A	B	A	R	E	P	L	A	C	E	
L	L	L	A	B	I	E	D	H	A	R	E	S	
F	I	E	L	D	N	E	A	T	E	N	E	D	
	A	D	V	E	N	T	U	R	E				
S	A	D	D	L	E	D	I	R	E	A	S	S	
A	G	R	E	E	S	N	O	N	M	I	T	T	
T	R	E	E	T	R	E	N	D	A	L	E	E	
Y	E	A	R	M	A	W	O	R	D	E	A	L	
R	E	D	H	E	R	S	W	A	D	D	L	E	
	P	E	N	I	T	E	N	C	E				
S	P	L	A	T	T	E	R	E	N	T	E	R	
P	O	L	A	R	I	N	E	B	R	I	A	T	E
O	R	A	T	E	S	N	E	N	I	N	E		
D	I	N	E	R	S	E	E	D	G	L	A	D	

ACROSS

1. Run off to wed
6. Show embarrassment
11. Coronet
12. Set free
15. Component
16. Bored
17. How old you are
18. Southern US state
20. Bounder
21. Depression
23. Low in pitch
24. Greek sandwich
25. Celtic language
26. Heredity unit
27. Balm ingredient
28. Observed
29. S
30. Unable to see
31. Rivulet
34. Dialect
36. Dove's sound
37. Chits
41. Egyptian river
42. Ticket part you keep
43. Wicked
44. Skin disease
45. Lower jaw part
46. Indian music
47. Captain's journal
48. Strangle
51. Decay
52. Hearten
54. Arouse
56. Algae
57. Daughter of a sibling
58. Canvas dwellings
59. Horse

CROSSWORD PUZZLE



DOWN

1. Knickknack holder
2. Permission
3. Type of cereal grass
4. Professor
5. Noble
6. Contusion
7. Loans
8. Arm bone
9. Observe
10. Untroubled
13. Charred
14. Poi source
15. Evanesces
16. Deal
19. Overweight
22. Ductile
24. Sparkle
26. Bacterium
27. Beer
30. Amorphous mass
32. Foot digit
33. Climb up
34. Revenue
35. Simpleton
38. Greed
39. Intolerant
40. A type of writing tablet
42. Tatters
44. Brews
45. Trainee
48. Secluded valley
49. Anagram of "Nets"
50. Way out
53. Be in debt
55. C

TB Auto Parts



104 N. Main ST
PO Box 434
Twin Bridges, MT 59754

Phone: 406-684-5739
Fax: 406-684-5377
tb_auto@yahoo.com

Monday - Friday
8 am to 5 pm
Saturday
9 am to 12 pm

BUYING GUNS
LOOKING FOR ALL TYPES OF FIREARMS.
CALL TODAY
FOR A FAIR AND COMPETITIVE OFFER.
CALL: 406-596-3475

FOR ALL YOUR CONSTRUCTION, HARDWARE AND FARM/RANCH NEEDS!!!

IMOC
BUILDING SUPPLIES
SHERIDAN, MONTANA
406.842.5643

LUMBER - HARDWARE - FEEDS - LAWN/GARDEN - FARM/RANCH
WWW.IMOCBUILDINGSUPPLIES.COM

Ruby Valley Sheds
DANIEL & LEONA LEE
179 JUDY LANE - ALDER, MT
CELL: 406-217-2131
HOME: 406-842-5206

Madison County Nursing Homes Foundation, in support of the Tobacco Root Mountains Care Center in Sheridan and the Madison Valley Manor in Ennis, wishes you health, happiness and peace throughout this coming year. Thank you for your ongoing support.

Board of Directors
Charity Fechter, President - Melinda Merrill, Vice President
Joanne Galiger - Paul Kramer - Paul Marsh
Sammi Christensen - INA Accounting, Ancillary Services

*"How far you go in life depends on your being tender with the young, compassionate with the aged, sympathetic with the striving and tolerant of the weak and strong because someday in your life you will have been all of these."
- George Washington Carver*

BERKSHIRE HATHAWAY MONTANA PROPERTIES
HOMESERVICES

MIRANDA WHEELER, REALTOR
406.640.1655
miranda.wheeler@bhsmmt.com

Montana Medical Savings Accounts

Contribute up to \$4,500 annually, and enjoy tax savings on your Montana tax return. Federally insured safety!

HighPeaksFCU.com

Sheridan 406-842-5372
Dillon 406-683-4373



Consult your tax advisor. Federally insured by NCUA.

HPF-168c.2

BRUNCH AND BINGO

Sundays
Jan. 7 - Mar. 24

Brunch: Adults \$13
Kids 12 & younger \$8
Bingo \$10 for 3 cards

AT
Virginia City Elk's Lodge

10-11 AM Brunch
11AM-12PM Bingo

GREAT FOOD AND FUN FOR ALL!

Questions - call Tanya @ 406-660-1559

WORD PUZZLE

Movies of the 1980s

G	B	E	E	T	L	E	J	U	I	C	E	L	H
T	E	D	T	E	H	E	P	P	E	E	O	R	G
M	T	G	E	G	P	R	O	O	T	H	S	O	N
O	R	H	P	T	R	B	A	L	H	B	R	T	E
S	T	O	E	T	E	T	G	T	E	A	G	A	P
O	I	S	N	G	D	T	T	E	G	T	N	N	A
H	T	T	A	E	A	M	G	R	O	M	I	I	G
H	S	B	L	P	T	E	L	G	O	A	N	M	T
H	L	U	P	D	O	H	E	E	N	N	I	E	O
R	A	S	R	E	R	N	S	I	I	T	H	T	P
B	B	T	I	T	T	O	O	S	E	N	S	E	G
T	O	E	A	E	O	A	I	T	S	S	E	H	U
U	T	R	N	O	O	O	A	I	R	H	H	T	N
S	G	S	S	O	G	H	H	U	J	E	T	L	U

THE SHINING
BEETLEJUICE
TOP GUN
THE GOONIES
AIRPLANE
THE TERMINATOR
GHOSTBUSTERS
POLTERGEIST
BATMAN
PREDATOR

Thank You

to ALL VOLUNTEERS everywhere!

As hearts focus this week with an "attitude of gratitude" I would like to take a moment and give a special thanks for the Madison Valley Manor in Ennis and the Tobacco Root Mountain Care Center in Sheridan. These two facilities, in their 24 hours a day efforts, give excellent care to those they serve...often the elderly in their last days. The staff (ALL inclusive from housekeeping, laundry, nursing, to administration) work to create an atmosphere of love, respect and compassion.

The Donors, too many to mention individually, give generously that the Auxiliaries (tremendous two we have) and the Madison County Nursing Homes Foundation might fill the gaps from needs to the wants and extras that adds to the quality of the resident's lives. Nondi Harrington - this lady tirelessly supports our fund raising efforts with guidance, grants, and mailings. Without each of you giving as you do, we could accomplish nothing.

Last, but certainly not least, I want to give a special thank you to Mary Kenworthy and to Mary (and Don) Ragsdale who have been with the Foundation since Bob Cleverly organized us in the beginning 2 decades ago. These people, along with the past and present board members, exemplify true "service" in our small communities.

Your time, energy, passion and your service makes this world a better place to live.



RE/MAX
MOUNTAIN PROPERTY

Please watch for Buyer & Seller Tips in each upcoming issue of the Ruby Valley Nugget, compliments of RE/MAX. I will begin the articles in the ads, and if you wish to read the entire article, go to my website, click on Sellers, click on Selling A Home, then scroll down to find the article you are interested in.

DOES UPGRADED LIGHTING ADD VALUE TO A HOME FOR SALE?

Lighting plays a key role in setting the tone for a room. Lighting can also help a home seem more updated. For example, if the buyers walk into the bathroom and see dated vanity lights, they may question how well other areas of the home are maintained. In winter, daylight dwindles and snowy weather can be grim - some home sellers are likely considering how to brighten their space, which may involve enhancing or upgrading the light sources inside and outside the house. Help prospective buyers view your home in the best possible light. Refreshed light fixtures and bulbs can make a big impact on the impressions of buyers... READ MORE details from this article on my website.



Ann Rhine, REALTOR®
(406) 920-0263
annrhineremax.com

STAGE STOP BOARDING
Dillon, MT
Dogs, Cats, Exotics
Day Drop-In
Equine & Showstock
Overnight Livery
stagestopboarding@gmail.com

RUBY VALLEY BREW
REMAIN UNTAMED

WE TIP OUR GLASS TO THE WILDER ONES

111 S. MAIN - SHERIDAN, MT - 842-5977

The Women's Resource Center
Providing advocacy services to survivors of domestic and sexual violence in Beaverhead and Madison Counties since 1977.

- Advocacy
- Victim Advocacy
- Legal Advocacy
- Safety Planning
- Crisis Intervention
- Emergency Shelter
- Relocation
- Medical & Law Enforcement Accompaniment
- Outreach
- Education
- Prevention
- Awareness

www.wrcmt.org 236 E. Reeder St. Dillon, MT 59725 406-683-6106

PERFORMANCE FAB WORK
ANDREW BRAACH

CUSTOM WELDING
CNC PLASMA CUTTING
SIGNS
MOBILE REPAIR
AUTOMOTIVE REPAIR
CUSTOMIZATION
DIFFERENTIAL REBUILD

406-498-0471
P.O. Box 393
TWIN BRIDGES, MT 59754
PERFORMANCEFABWORK@GMAIL.COM

BERKSHIRE HATHAWAY
HomeServices
Montana Properties

Frank Colwell
Broker
32 years serving
Montana
Real Estate Needs
406.596.1076

Sun	Mon	Tue	Wed	Thu	Fri	Sat
	New Year's Day No School	Noon Jr Class mtg MS BBB practice starts 6pm Booster Club mtg	Noon BPA mtg	Noon FFA mtg 4pm HS BB w/ Three Forks (H), BGG	Noon Sophomore class mtg 5:30pm HS GBB w/ Man. Christian (T) (girls only)	MS BBB at Sheridan tourney
FFA Fusion	Summit Noon Exec Student Co. mtg 6:30pm REG. BOARD MTG (MT rm)	(Helena) IC grading window opens Noon Student Co. mtg 4pm MS BBB w/ Man. Christian (T)	10:15am Spelling Bee (grs 4-8) Noon 8th gr class mtg	Noon Close-Up mtg 4pm MS BBB w/ Sheridan (H) 5:30pm HS BB w/ Lima (T), BG	Speech & Drama End 2nd qtr/1st sem	Meet, Townsend HS Robotics meet in Helena MS BBB at Harrison/WC tourney 2:30pm HS BB w/ Man. Christian (H), BGG
JrHI Robotics meet in Helena	Martin Luther King Day No School 6:15pm Trailblazers 4-H mtg (Inchrm)	Staff lunch mtg 4pm IC grading window closes 4pm MS BBB w/ Harrison/WC (T)	6pm Vigilante Electric member mtg (MT rm)	Noon Freshman class mtg 6pm Super Stars 4-H mtg (Inchrm)	Divisional Speech All-Star Honor 4pm HS BB w/ SV (T), BGG	Meet, Columbus Choir, Missoula MS BBB w/ WY tourney 2:30pm HS BB w/ WSS (H), BGG
	4pm MS BBB w/ Ennis (T)	4pm HS BB w/ Sheridan (H), BGG		Noon travel group mtg 4pm HS BB w/ Whitehall (H), BGG	State Speech & 5:30pm HS GBB w/ Broadwater (H)(girls only)	Drama, Choteau MS BBB TB tourney
	4:30pm HS BB w/ Dillon "C" (T)	4pm MS BBB w/ Whitehall (T)				

print-a-calendar.com

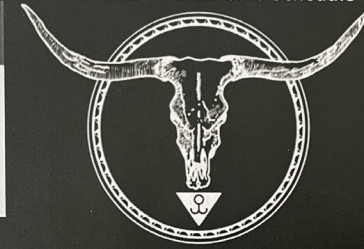
DILLON LIVESTOCK AUCTION

2023-24 Winter Sale Schedule

Eagle Valley Ranch Dispersal
December 14, 2023 | Noon

Dillon Livestock Auction, Dillon, MT
1,700 Head Sell—Sitz Angus Influence
Will start calving the end of February

Quality Commercial Angus
350 AI-Bred Bred Heifers
1,350 2-7 Year-Old Cows



CONTACT US

Barry McCoy (406) 660-1889
Colton Reynolds (406) 351-3906
Jill Anderson (406) 490-3263
Office (406) 683-2002
www.dillonlivestockauction.com

DECEMBER-23

7th All Class Cattle Sale
14th Special Bred Cow & All Class Cattle Sale
21st Special Feeder & All Class Cattle Sale
28th No Sale

JANUARY-24

4th Special Feeder & All Class Cattle Sale
11th Special Stock Cow & All Class Cattle Sale
18th Special Feeder & All Class Cattle Sale
25th All Class Cattle Sale

FEBRUARY-24

1st Special Stock Cow & All Class Cattle Sale
8th TBD
15th All Class Cattle Sale
22nd TBD
26th Circle L Angus Bull Sale
29th All Class Cattle Sale

JTS CONSTRUCTION LLC
TWIN BRIDGES, MT
406-925-0615
SPECIALIZING IN NEW HOME CONSTRUCTION AND QUALITY REMODEL AND REPAIR

KENWORTHY ELECTRIC INC.
P.O. Box 56
Sheridan, MT.
Dan Kenworthy (406) 842-5865 PH
Cell: 696-4100 (406) 842-7373 FAX
kenworthyelectric.com

Resolute Roots REALTY
Dawn Marie Buttrey
Broker/Owner
406-600-4802
ResoluteRoots406@gmail.com

NOVICH INSURANCE
novich@montanainurance.net
P: (406)684-5264 / F: (406)684-5701
PO Box 394 / 104 W 4th Ave - Twin Bridges, MT 59754
Home - Auto - Farm/Ranch - Business - Work Comp

SPC CONSTRUCTION LLC
Sean Phillips, General Contractor
New Homes, Additions, Log Structures, Rustic Styles, Chinking, Consulting
Home: 406-684-5509 Cell: 406-596-9403

ENNIS HOME FURNISHINGS
MATTRESSES, APPLIANCES, FURNITURE, ELECTRONICS
ennishomefurnishings.com Office: 406-882-3250 120 W Williams St
order@ennishomefurnishings.com Fax: 406-882-3231 Ennis, MT 59729

HANDYMAN TICE
Corey Theis 720-732-6506
PO Box 42 Cptice@yahoo.com
Sheridan, MT 59749 Free Estimates
Carpentry Flooring Drywall Sprinkler Systems Automotive Repair

SUDOKU PUZZLE

		2		6	8	7		
3	8	9			2	4		
			3					5
	7			4				1
	4	5	6		1			3
			2	5	9			
		4						
	1	8			4			
7	9							

ANSWERS FROM LAST ISSUE

1	3	8	5	4	9	2	7	6
5	2	6	3	1	7	8	9	4
4	9	7	6	8	2	5	3	1
9	8	4	7	5	3	1	6	2
2	7	1	8	6	4	3	5	9
3	6	5	2	9	1	7	4	8
8	5	2	9	7	6	4	1	3
7	1	9	4	3	8	6	2	5
6	4	3	1	2	5	9	8	7



Meet Sunny Harmon

THE CABINET STOP

CABINETS & COUNTER TOPS

Locally owned and operated.
Serving SW Montana.
Offering free 3D layout and quote.
No job too big or small!



For more information call
Sunny Harmon at: 406-925-0647
Jordan Harmon at: 406-925-0615
Gary Caprara at: 406-580-1574



HARSHBARGER LAW FIRM
www.harshbargerlawfirm.com

Lori A. Harshbarger, Attorney
Kylee Gibson, Attorney
Tai Goldin, Of Council
204 S. Main Street
P.O. Box 445
Twin Bridges, MT 59754

Phone: (406) 684-5001
Fax: (406) 684-5116

ALLHANDS AUTO CLINIC, LLC
3565 Hwy 287
SHERIDAN, MT 59749
406-842-7155
FULL SERVICE DIAGNOSTIC AND REPAIR CLINIC
M-F 7:30AM to 5:00PM
ROBERT ALLHANDS, OWNER 406-596-0502
BRADLEY ALLHANDS, OWNER 406-596-5049

Alder Creek Coffee Roasters
117 North Main Unit D
Sheridan, MT
www.aldercreekcoffeeco.com
Hours - 7 a.m. to 3 p.m.

ROCKIN S BUSINESS SERVICES LLC
PO Box 156 Sheridan MT 59749
406-682-7769 406-842-7778
Cell: 406-581-3818 Fax: 406-281-7242
Melody@rockinstax.com WWW.Rockinstax.com

Community Events
January 2024

Sun	Mon	Tues	Wed	Thurs	Fri	Sat
	1	2	3 Twin Bridges Helping Hand Food Pantry 10am-3pm	4	5	6
7 Brunch & Bingo – Virginia City Elks Lodge 10am	8	9	10 Twin Bridges Helping Hand Food Pantry 10am-3pm	11	12	13
14 Brunch & Bingo – Virginia City Elks Lodge 10am	15 Martin Luther King Jr Day	16	17 Twin Bridges Helping Hand Food Pantry 10am-3pm	18	19	20
21 Brunch & Bingo – Virginia City Elks Lodge 10am	22	23	24 Twin Bridges Helping Hand Food Pantry 10am-3pm	25	26	27
28 Brunch & Bingo – Virginia City Elks Lodge 10am	29	30	31 Twin Bridges Helping Hand Food Pantry 10am-3pm			



Nicholette Picken
BROKER®
(406)698-0853
nicholette.picken@gmail.com



How to Save the Sale of Your Home

When you sell your home, things can go smoothly or go wrong, and which way it goes depends largely on how well you prepare for the transaction and respond to glitches that may occur along the way.

Your Berkshire Hathaway HomeServices network professional can help you determine the right asking price to sell your home the fastest and for the most money. If you list your home too high, you'll find that homebuyers become more critical and demanding. If your homebuyer feels good about the purchase, they're more likely to be reasonable with you.

Some homebuyers may not be well prepared enough to buy a home, so it's prudent for you to insist that only homebuyers who're pre-approved by a lender or can prove cash assets be allowed inside your home. Ask to see the lender's letter of pre-approval before you sign a contract.

During the home inspection, homebuyers may fear that the home needs too much work. If there are repairs or replacements to be done, offer to take care of them immediately or be willing to negotiate on price.

Your agent will monitor each step in the transaction to make sure all parties perform their roles, from good faith deposits, to appraisals, to title searches, on time and in a professional manner. If you've put your home in pristine condition and listed it at fair market value, you'll prevent many problems from occurring. A reasonable homebuyer won't walk away from a well-kept home at the right price.



Nichollette Picken
BROKER®
406.698.0853
nichollette.picken@gmail.com

CONTACT:

✉ NICHOLETTE.PICKEN@GMAIL.COM
☎ 406-698-0853
♡ WWW.BHHSMT.COM