

15TH ANNUAL KEN STEINER CARSHOW



SEPTEMBER
9TH

MAIN STREET

Sheridan
Montana

REGISTRATION
7AM-10AM
AWARDS 2PM
TOP 10
KID'S CHOICE
PROCEEDS ARE USED
TO FUND
SCHOLARSHIPS TO
TRADE SCHOOLS

Call Kali with questions
406-660-1107

FOOD VENDORS, SNOW CONES, FACE PAINTING, LIVE MUSIC,
COLD BEER AND COOL CARS! COME CHECK IT OUT!

TB Auto Parts



104 N. Main ST
PO Box 434
Twin Bridges, MT 59754

Phone: 406-684-5739
Fax: 406-684-5377
tb_auto@yahoo.com

Monday - Friday
8 am to 5 pm
Saturday
9 am to 12 pm

KENWORTHY ELECTRIC INC.
P.O. Box 56
Sheridan, MT.
Dan Kenworthy (406) 842-5865 PH
Cell: 596-4100 (406) 842-7373 FAX
kenworthyelectric.com

THE SHACK
TWIN BRIDGES, MONTANA
Pizza..Burritos..Beer..Sandwiches..Burgers..Salad Bar..16 Flavors of Ice Cream
301 N. Main 406-684-5050
NEW HOURS:
We will be closed Sunday and Monday - Open Tues-Sat -11am-8pm
Call 406-684-5050 for Daily Specials

FIREWOOD BANK OF THE RUBY VALLEY VOLUNTEERS NEEDED!

Neighbors Helping Neighbors



A JOB FOR EVERY
VOLUNTEER,
AT ANY SKILL LEVEL

CUT - SPLIT - STACK

FOR MORE
INFORMATION
CONTACT

406-842-3392

A LOCAL CHARITY



**Tobacco Root
Mountains Care
Center**
Phone: (406) 842-5600
Fax: (406) 842-5419

326 Madison
P.O. Box 308
Sheridan, MT 59749



**GRAHAM
DRILLING**
SHERIDAN, MT
Water Well Drilling,
Pump Sales
Installation,
Service &
Repairs.
Phone: (406) 842-5214
GRAHAMDRILLING.
COM

P's Clothes Closet & More
Located above the Twin Bridges Library
OPEN HOURS
MONDAY 10AM - 2PM
WEDNESDAY 9AM - 2PM
FRIDAY 10AM - 2PM
SATURDAY 10AM - 2PM
ALL items are FREE to the community! Mens, womens,
and childrens clothing, toys, household items, sheets,
towels, etc. Donations are greatly appreciated and can
be dropped off during open hours or by appointment by
calling P @ (406) 600-2983

**3 RIVERS
COMMUNICATIONS**
PHONE INTERNET
406-467-2535
800-796-4567
3rivers.net

**PERFORMANCE FAB
WORK**
ANDREW BRAACH
CUSTOM WELDING
CNC PLASMA CUTTING
SIGNS
MOBILE REPAIR
AUTOMOTIVE REPAIR
CUSTOMIZATION
DIFFERENTIAL REBUILD
406-498-0471
P.O. BOX 393
TWIN BRIDGES, MT 59754
PERFORMANCEFABWORK@GMAIL.COM

**BERKSHIRE HATHAWAY
HomeServices**
Montana Properties
Frank Colwell
Broker
32 years serving
Montana
Real Estate Needs
406.596.1076

HANDYMAN TICE
Corey Theis 720-732-6506
PO Box 42 Cptice@yahoo.com
Sheridan, MT 59749 Free Estimates
Carpentry Flooring Drywall Sprinkler Systems Automotive Repair

SEPTEMBER 2023 - 1ST ISSUE

RUBY VALLEY NUGGET

the *Elling House*
ARTS & HUMANITIES CENTER
presents

COWBOY POETRY

comes to
Virginia City!



Anyone interested
in reciting,
please call
406-843-5454
or 843-5508
before Sept 16!

Come hear the sad (and not so sad)
old (and not so old) cowboys recite*

SATURDAY AT 7PM

Sept 23th

ADMISSION BY DONATION

404 E. IDAHO ST VIRGINIA CITY, MONTANA
406.843.5454 406.843.5507 WWW.ELLINGHOUSE.ORG

*apologies to Chris Wall for
messing with his song,
"Silver Hair and Silver Wings"

**MADISON COUNTY
HEATING & COOLING**
RESIDENTIAL &
COMMERCIAL
HEATING &
AIR CONDITIONING
406-221-6677

**DUSTING DAISY
HOUSEKEEPING**
My Services Include
Cleaning Bathrooms
Cleaning Kitchens
Dusting & Vacuuming
Mia Babcock
Home
406-287-3075
Cell
406-451-6886
\$35.00 per hour

**MONTANA
LAND & LUXURY**
610 N Montana Street - Dillon, MT 59725
Office: 406-683-3635
Cell: 406-660-2440
Jessie Broksle
Licensed
Montana Realtor

**ENNIS
HOME
FURNISHINGS**
MATTRESSES, APPLIANCES, FURNITURE, ELECTRONICS
ennishomefurnishings.com Office: 406-882-3250 120 W Williams St
order@ennishomefurnishings.com Fax: 406-882-3231 Ennis, MT 59729

McLeod Mercantile
"Your locally, family owned fuel distributor"
2 convenience store locations
Narisia & Sheridan
Delivering fuel in Madison & Jefferson counties
Main office: 685-3379
Sheridan store: 842-5478
Norris store: 685-3361



PUBLISHED BY BEACON BUSINESS CENTER ~ 406-842-7488

DESIGNED BY JOETTA WETZSTEON - CONTACT: RUBYVALLEYNUGGET@GMAIL.COM - WWW.BEACONBUSINESSCTR.COM

AUTHORIZED FEDEX & UPS SHIPPING CENTER SUPPLIES

HOME DECOR - TOYS - CRAFTS - PUZZLES - OFFICE SUPPLIES - COPY - FAX - GRAPHIC DESIGN - AND MORE...

THE RUBY VALLEY NUGGET CAN BE ALSO FOUND ONLINE AT www.beaconbusinessctr.com

REMINISCENCES BY JAMES DUNCAN, SR

The following information was written by James Duncan and read by Mrs. Duncan (Jeannette) at a meeting of the Sheridan Woman's Club in March of 1925.

To write a sketch of my trip across the plains from Missouri river to Virginia City, Mont., after a lapse of more than 60 years is rather a difficult matter and I will only try to give a few of the more important incidents of the perilous trip to the new Eldorado of the Rockies and what is now the Treasure state of the union. I was 16 years old when we outfitted at Leavenworth, Kas., about the first of May 1864. Our party was composed of my father and mother, my brother Tom, sister Sarah and myself and a man by the name of James Singer. We had two yoke of oxen and one yoke of cows for each wagon. (God bless the cows, for we worked them all day and milked them at night and morning). There were four or five other wagons in the train. We started together through Kansas, which was quite well settled for about 150 miles to Marysville, the last town on the Blue River. Some of the wagons in our party left us and went on to Colorado. We traveled until we reached the South



James Duncan sitting in front with family - L to R - Hazel, Charley, Dan, Christina, Jim, Jeannette (mother) Ruby, George, (child) Tom

Platte in Nebraska and struck the Indian country, where we overtook several wagons that were waiting to form a train of about 30 wagons. We elected R.O. Hickman captain, who in later years, surrounded by his interesting family in Virginia City, where he had permanently located, was one of the influential men of the county and territory, in business and social life. He served as county treasurer and was elected the first state treasurer after Montana was admitted into the Union of States November 8, 1889. The Hickman bridge was named in his honor. The Thompson-Hickman library in Virginia City is a living monument to his memory. Gill Wheat, George Pitcher and Mr. and Mrs. Hind and others were also in the party. As the south Platte River was rising very fast it was decided to cross the north side, thus eliminating a 50-mile drive to Julesburg, farther up the river. The decision proved a wise one. When the first team forded the river, the water came up to the hubs. By the time the last team and wagon had crossed the water came halfway up the wagon bed. When we got opposite Julesburg there were 500 wagons waiting to get across. They were compelled to wait for one month before they could get across. We left the South Platte and went up Vale creek across the divide, on the North Platte, which was considered a very dangerous country because of the Indians. While there had been one train attacked, one man killed an several wounded, we did not get into any trouble with the hostile Indians, but after arriving at Laramie I saw the wounded men after crossing the North Platte side. One man was struck with an arrow and part of his hand was taken off. I have forgotten the distance of the number of days we traveled from Julesburg to Fort Laramie. The North Platte was a very nice stream, clear and swift, also had a fine bridge. There were several soldiers at Fort Laramie. After leaving Laramie we traveled about seven miles to the bridge cut-off, leaving only a calf trail, where we found many wagons waiting for a large train to follow Jim Bridger to Alder gulch. He was the first and ours the second train. After two days were joined by a number of others. Among the number were A. Maynard, M. Bowers and C. Bowers, who settled in the Madison Valley. We hired a guide. He styled himself Rocky Mountain Babe and we paid him \$5 per wagon for his service. The name as guide was all the qualifications he possessed, as he knew practically nothing about the country. When we reached the Big Horn country were found a high and rolling prairie. As there was no wood for a fire the children were sent out to gather buffalo chips for a fire. We found the river very high at the Big Horn, where those in charge demanded \$5 a wagon to move them over. As our finances were getting low our captain decided to look around and try to find a suitable fording place and found one down the stream. Though deep and dangerous, we crossed over safely the next day. The men were in the water all day to guide the teams and driver to shore. The next morning my father was stricken with pneumonia, but we had a very competent physician, Doctor Sherwood, who soon had the patient on the road to recovery and we moved on in a few days. Dr. Sherwood practiced in Virginia City for a while after arriving there. We traveled down the Big Horn for about 50 miles, when we laid over one day and celebrated the Fourth of July. I set my fish pole on the bank of the stream. The next morning, I found a mud turtle on my hook, so we had turtle soup for a Fourth of July dinner, which sure tasted good. We left the next day followed a grand stream, where we camped a day in preparations for a long drive to the Shoshone country, 35 miles distance without water, which we made by dark. In crossing the river my wagon met with an accident. In fording up the stream we took no precautions to have someone on the lower side to keep the cattle up stream. Father was with me in the front of the wagon when nearing the other side of the stream the cattle suddenly turned and went down the stream. The wheels of the wagon came off and went downstream with the cattle, leaving the wagon box with mother, Sarah and myself floating downstream. Father leaped from the wagon to the back of the oxen train to save them. There were several people on the bank who came to our rescue. Those were trying times. Among those who saved our lives were W. A. Maynard, Gil Wheat and George Pitcher and others in the train. Those were times that tried men's souls and bound us in closer fellowship. The next day we camped at Clark's Fork. There were about 300 Indians there. The tribe was very civil and seemed glad to see us. There were several large streams which we crossed on in safety. The Bolder, Rosebud and Yellowstone, which crosses near where Livingston now stand. We passed old Jim Bridger the next day camping on the site of Bozeman. Gil Wheat killed a deer, the antlers in their natural state were the most beautiful things we had ever seen. The train arrived in Virginia City July 21, 1864. Of all the members of the at train only Mr. Maynard and myself are left to tell the story of that memorable journey. I received my early education in the schools of Kansas. After coming to Montana, I attended school in Junction for one-half day. The teacher in charge had looked too often at the wine cup and left his school in charge of myself while he went out to get another intoxicating drink. Thus, my school days ended. I am enjoying my declining years in comfortable home in Sheridan with my good wife.

RUBY VALLEY HAPPENINGS

15TH ANNUAL KEN STEINER MEMORIAL CAR SHOW - September 9th - Come close out your summer with us at our 15th Annual car show! We'll have food, live music, and Ruby Valley Brew will have several delicious selections on tap. Registration 8-10AM 50/50 drawing Poker Walk to business on Main Street-winner gets cash prize. The Sheridan Public Library will be hosting their Pie and Ice Cream Social. Proceeds from car show will go to a senior planning on attending a trade school. - See Flyer

THE FRIENDS OF THE SHERIDAN LIBRARY ICE CREAM SOCIAL - Saturday September 9th at 10 am- \$8 -Featuring pie and hand-made ice cream from the Virginia City Creamery. - 10 cent kid cones - Benefiting the Friends of the Library

VALLEY ASSEMBLY CHURCH - Valley Kids (age 4 through 6th grade) @ Valley Assembly Church every Wednesday beginning September 13th. After school 4pm to 6pm. 114 N Main St. Sheridan. Contact Pastor Terry @ 842-5845 for more details. FYI: Grief Share in on Monday Nights 7pm at Valley Assembly Church 114 N Main St. not at 3 Rivers Worship Center. It's a non denominational series; the location changes with each new group

SHERIDAN FARMERS MARKET & MUSIC- July 6th through September 14th- Every Thursday from 5:30 to 7:30 pm - Main Street Park in Sheridan

COMMUNITY NIGHT OF HOPE - September 10th - 6 pm at Madison County Fairgrounds Pavilion Building.

BREWERY -2- BREWERY AUTO TOUR - September 10th from 1-6 - See Flyer

STEVE ROSE AND FRIENDS COMMUNITY CONCERT AT JACKSONS GARDEN - September 10th at 5:30 pm - See Flyer

GRACE COMMUNITY FELLOWSHIP - Returning from Cowboy Services to Church Barn in Laurin Sept 10th. Good Old Ways, Friday Oct 6th at 6 p.m. Canning. Free Event -Harvest Party - Friday Oct 27th. 6:00 to 8:00 pm. For more info 406-842-5915.

Community Fellowship, Laurin. For more info 406-842-5915. 4 COURSE PRIX FIXE POP UP DINNER - September 22nd - 3-6pm at Candlelight Cafe - Sheridan - Call/Text Sarah to make reservations- 406-570-7857 - See Flyer

MONTANA PICTURE GALLERY - "Outlaws by Day, Angels by Night" September 23rd - 3-6pm - Virginia City, MT - See Flyer

COWBOY POETRY - September 23rd at 7 pm - At The Elling House - See Flyer

GOLDEN GRAVEL GRINDER & VIRGINIA CITY BIKE FEST - September 23rd - Virginia City - See Flyer on back page

LAND STEWARDSHIP WORKSHOP FOR SMALL ACREAGES - Tuesday October 3rd - 3-5 pm - at Alder Fire Hall

WICKED WONDERLAND - Shine Studio Dance The Magic Fundraiser - 7th of October - 3-11 pm - Costume Contest- Escape Room - Axe Throwing - Carnival Games-Concessions-Mickey Trick Or Treat - And More! \$10- Kids \$15- Age 15+ - \$50 Family

WILDFLOWER MUSIC ACADEMY - Mondays-10 am (Toddler Class up to age 5) Wednesdays - 5:45 to 6:45 - Children's Chorus (Age 8+) Thursdays - 5:45 to 6:30 - Youth Group Ukulele (Age 5+) Private Piano Lessons Available As Schedule Permits - Call or Text Jaeleen Munns - 406-465-5934 Country Roots - 117 N Main St Unit A - Sheridan, MT

P'S CLOTHES & MORE: Located above the Twin Bridges Library. Hours: Monday: 10-2 Wednesday: 9-2 Friday: 10-2 Saturday: 10-2 - All items are FREE to the community. Call P at 406-600-2983 to donate or for questions.

LOST CABIN BAR: Monday: Open Pool Table 5-7 - Tuesday: Music Trivia 6:30 - 8 - Wednesday: Whiskey Wednesday (Discount flights and tasters) - Thursday: First Thursday of Month Ladies Night - Friday: Red (Remember Everyone Deployed) Friday. Come in or call for details - Every Monday through Friday Happy Hour 5-6 - Check our FB page for weekend specials @lostcabinbar

PUBLIC LIBRARY EVENTS:

SHERIDAN - Newspaper History Group - Tuesday mornings @ 9 AM. Knitting Group - Thursdays @ 2 PM

CAREGIVER SUPPORT GROUP - First and third Tuesdays at 6 pm For more information call 406-842-7981.

TWIN BRIDGES - Thank you for everyone who filled out our survey! We are always working to make our library fit the needs of our community. Our five winners of the \$20 in Twin Bucks are: Anna Ingram, Rachele Parsons, Betty Humbert, Lela Wendt, and Sheila Burke. Congratulations! Check in at the library for information about our summer reading program schedule. It looks to be a lot of fun! Don't forget Lego Club...There will be no meeting in May, but will pick up again in June!

TWIN BRIDGES HELPING HANDS: Twin Bridges-MT Helping Hand Food Pantry, we aim to End Hunger in Montana. We have moved to 208 1/2 S. Main St. Wednesday's. 10am to 3pm. Call for appointment any other day or time. We are here for you Madison County and neighboring towns. Pantry is open every Wednesday 11-2 or call for an appointment. Have on Hand canned fruits, vegetables, soups, sauces, jams, jellies, more. Boxed or bags of rice, beans, dinner helpers, pasta, dry milk, some meat. Toiletries. Adult pads/pull ups. Laundry items. Cleaning supplies. Dog, Cat food and Litter. If you don't see what you would like us to carry, please let us know. 596-1978 & 233-9616

RUBY VALLEY FOOD PANTRY: Food is distributed on Saturday mornings from 10-12 @ 206 S. Main in Sheridan, MT -between gas station and post office.

3 RIVERS WORSHIP CENTER: GRIEF SUPPORT GROUP - WEEKLY - FOR MORE INFORMATION CONTACT - 406-381-6677 Worship is what we are all about and we would love to have you join us. Come as you are and be blessed. Every Sunday @ 10:30 am @ 3648 MT-287. Family friendly. Weekly Grief Support Group - Saturdays at 10 am and Mondays at 6 PM - for more information call 406-381-6677

If you have a event you would like us to help you promote, please let us know.
www.rubyvalleynugget@gmail.com

DEADLINE FOR SUBMISSIONS TO THE RUBY VALLEY NUGGET HAS CHANGED TO MONDAYS!

Spiffy Biffy Portable Toilets Inc.



Gary & Heather Caprara

PHONE: 406-596-0593
406-580-1574

spiffybiffyportables@gmail.com

Banks Industrial Services LLC

Excavation, Water/Sewer, Hauling, Welding/Portable, Equipment Rentals
Equipment Repair, Pump Repair, Used Equipment Sales

David Banks

BISLLC@hotmail.com
406-596-6049
406-684-5128

5 Rogers Road Silver
Star, MT 59751



**HARSHBARGER
LAW FIRM**

www.harshbargerlawfirm.com

Lori A. Harshbarger, Attorney
Kylee Gibson, Attorney
Hilary O. Betson, Attorney
Tai Goldin, Of Counsel





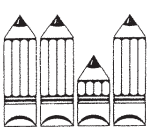
204 S. Main Street
P.O. Box 445
Twin Bridges, MT 59754

Phone: (406) 684-5001
Fax: (406) 684-5116

2022 has brought some exciting changes to our business! We have relocated our office to Twin Bridges. We look forward to helping you with your legal matters at our new location, by phone or via Zoom.

TWIN BRIDGES PUBLIC SCHOOLS

September 2023

Sun	Mon	Tue	Wed	Thu	Fri	Sat
					7pm HS FB w/ Noxon (T)	
	3 No School - Labor Day	4 Homecoming 4pm MS VB w/ Sheridan (T) 6pm Booster Club mtg 7pm Powder Puff FB	5 5:30pm BBQ  GO FALCONS! 6:30pm Kangaroo Ct	6 Week 4pm MS VB w/ Ennis (T) 2:30pm Power Buff VB & Pep Rally	7 1pm Homecoming Parade 4pm HS VB w/ Granite 4pm MS FB w/ WY (H) 7pm HS FB w/ Lincoln (H)	8 MS VB at Harrison/WC Gardiner (H)
	10 4pm JV FB Triangular at Shields Valley	11 3pm MS VB w/ Whitehall (H) 4pm HS VB w/ Whitehall/Har/WC (H) 7pm REG BOARD MTG (MT rm)	12 8:30am Paint the TB	13 4pm MS FB w/ Sheridan (H) 5pm HS VB w/ SV (T) 6pm Super Stars 4-H mtg (Inchrm)	14 	15 2:30pm MS VB w/ WSS (H) 4pm HS VB w/ WSS (H)
	17	18 4pm HS VB w/ Sheridan (T) 4pm MS VB w/ Ennis (H)	19	20 4pm MS FB w/ Boulder (H) 4pm MS VB w/ Harr/WC (H) 6pm Family Night w/ Montana PBS	21 4pm HS VB w/ WY (T)	22 HS VB at Sheridan Trny MS VB w/ Man. Christian (T) 1pm HS FB w/ Lima (T)
	24 No School - PIR Day 6pm MS FB w/ Boulder (T)	25 4pm MS VB w/ Whitehall (T)	26 	27	28 2:30pm MS VB w/ Sheridan (H) 1pm HS VB w/ SV (H) 7pm HS FB w/ Alberton (T)	29 HS VB at Man. Christian Trny MS VB at Sheridan Trny

print-a-calendar.com



NOVICH INSURANCE

novich@montanainurance.net

P: (406)684-5264 / F: (406)684-5701

PO Box 394 / 104 W 4th Ave - Twin Bridges, MT 59754

Home - Auto - Farm/Ranch - Business - Work Comp



BERKSHIRE HATHAWAY MONTANA PROPERTIES
HOMESERVICES

MIRANDA WHEELER, REALTOR
406.640.1655
miranda.wheeler@bhhsmt.com



SPC CONSTRUCTION LLC

Sean Phillips, General Contractor

New Homes, Additions, Log Structures,
Rustic Styles, Chinking, Consulting

Home: 406-684-5509 Cell: 406-596-9403

RENEGADE ELECTRIC



Adam Davis

Dereck Short

406.596.5281

renegadeelectric406@gmail.com

COMMUNITY NIGHT OF HOPE

"Building Up
The Body Of Believers"
(Hebrews 10:19-25)

With Special Guest Speaker
Steve Bartkowski

Retired NFL Quarterback
1975 First Round Draft Pick

Whitehall
Silver Star
Dillon
Twin Bridges
Sheridan



Ennis
Virginia City
Nevada City
Alder
Laurin

From Football to Faith

Sunday September 10th - 6:00 pm

**Madison County Fairgrounds
Pavilion Building**



WHETHER YOU ARE
BUYING OR SELLING, WE'LL
WORK HARD FOR YOU.

Nobody in the world sells more real estate than RE/MAX.¹
RE/MAX is the most productive real estate network in the world.¹
RE/MAX agents have the experience to get the job done in today's market.
RE/MAX Associates average more sales than other real estate agents.
RE/MAX: The #1 name in real estate and brand awareness, and the RE/MAX balloon is recognized all over the world.²
When you join RE/MAX you're receiving the benefit of billions of dollars of advertising that have made RE/MAX the real estate leader it is today.
Millions of buyers and sellers visit remax.com for their real estate needs.
remax.com shows all of the listings in thousands of cities and towns. Each year, RE/MAX agents help hundreds of thousands of families buy or sell a home.

¹As measured by residential transaction sales.
²Source: MMR Strategy Group study of unaided awareness.

RE/MAX MOUNTAIN PROPERTY

LIST WITH ME!
Ann Rhine, REALTOR®
(406) 920-0263
arhine.REMAXmtnprop@gmail.com

Serving the:
Ruby, Beaverhead & Jefferson River Valleys!



**HOME PARK
ASSISTED LIVING**

406-842-5133

homeparkassistedliving.com

504 Ray Lane
Sheridan, MT



109 S. MAIN ST.
TWIN BRIDGES, MT
406-684-5482
COLDEST BEER IN TOWN

ODYSSEY
DEPENDABLE COMPUTER REPAIR

PC, MAC AND SERVER REPAIR,
IT SUPPORT, BUSINESS
SECURITY AND CAMERAS
FOR HOME OR RANCH

WWW.COMPUTERSMT.COM
(406) 992-4093

FOR ALL YOUR CONSTRUCTION, HARDWARE AND FARM/RANCH

NEEDS!!!
IMOC
BUILDING SUPPLIES
SHERIDAN, MONTANA
406.842.5643

LENDER HARDWARE FEEDS LAWN GARDEN FARM/RANCH
WWW.IMOCBUILDINGSUPPLIES.COM



RUBY VALLEY BREW
REMAIN UNTAMED

WE TIP OUR GLASS
TO THE WILDER ONES

111 S. MAIN - SHERIDAN, MT - 842-5977

GROUP GRIEF SUPPORT

Help and encouragement after the death of a Spouse, child, family member, or friend.



WEEKLY SUPPORT MEETINGS!
MONDAY NIGHTS AT 7PM
STARTING JULY 31ST
AT THE VALLEY ASSEMBLY
FOR MORE INFORMATION
CONTACT 406-381-6677

Beginning September 11
FALL CLASS SCHEDULE

Wildflower Music Academy

MONDAYS
10 AM LET'S MAKE MUSIC
(TODDLER CLASS-UP TO AGE 5)

WEDNESDAYS
5:45-6:45 CHILDREN'S CHORUS (AGES 8+)

THURSDAYS
5:45-6:30 YOUTH GROUP UKULELE
(AGE 5+)

PRIVATE PIANO LESSONS AVAILABLE AS SCHEDULE PERMITS. PLEASE CALL FOR OPENINGS

ALL CLASSES WILL TAKE PLACE AT
 117 N MAIN ST UNIT A SHERIDAN, MT (COUNTRY ROOTS)
 CALL OR TEXT NOW TO RESERVE YOUR SPOT!
 JAELEEN MUNNS 406.465.5934

LAST ISSUE ANSWERS

S	H	O	E	F	E	V	E	R	S	H	O	D					
N	O	U	N	O	L	I	V	E	T	Y	R	O					
I	N	T	E	G	R	A	T	E	D	O	D	E	S				
T	E	E	E	A	T	E	N	M	O	R	S	E					
S	Y	R	I	N	G	E	S	A	I	G	A						
				C	U	E		P	O	R	T	E	N	D	S		
S	A	T	E	S			D	A	N	C	E		G	O	O		
C	R	U	D			R	I	N	G	S		B	E	R	M		
A	I	R		T	E	S	T	S		B	L	A	M	E			
M	A	N	T	R	A	P	S		C	O	O						
				C	H	A	R	R		S	A	R	C	A	S	M	
S	T	O	R	M			O	P	E	R	A		W	E	E		
L	U	A	U					O	V	E	R	E	X	P	A	N	D
A	N	T	S					N	E	R	V	E		U	R	S	A
W	E	S	T					E	S	T	E	R		P	E	E	L

ACROSS

- Ice a cake
- Ticket part you keep
- Banquet
- Not upper
- Wife of Zeus
- Mid-month days
- Drama set to classical music
- Not closed
- Knights
- Walker
- Bay
- Hurried
- Is melodramatic
- Mildew
- Cobbler's tool
- Hurry on foot
- Dogfish
- Beams
- Fragrance
- Alike
- Food provider
- Rock
- Mend
- Ascend
- Can
- Decay
- French for "Head"
- End
- Regrets
- Baking appliance
- Unrequited
- Not early
- Chinese dynasty
- Cognizant
- Lyric poems
- Border
- A fruit of the gourd family
- Crimsons
- Marsh plant
- Squeeze

CROSSWORD PUZZLE

1	2	3	4	5		6	7	8	9		10	11	12	13	
14						15					16				
17						18					19				
20						21					22				
					23					24	25				
26	27	28	29		30				31						
32					33			34		35		36	37	38	
39					40			41	42						
43						44	45					46			
					47		48		49				50		
51	52	53					54			55					
56						57	58					59	60	61	62
63						64				65					
66						67				68					
69						70						71			

DOWN

- Epic fail
- Lariat
- Was indebted to
- Arid
- Garbage
- Inshore
- In a lukewarm way
- Fertilizer component
- Streamer
- Discomfit
- Blockhead
- Audacity
- SSS
- Coronet
- Be necessary
- A body of matter
- Leave out
- Luxury car
- Elegance
- Foraged
- A Great Lake
- Bird home
- Tall woody plant
- Luau souvenirs
- Initial wagers
- Set up
- Spay
- Sorrow
- Avoid
- Doled
- Wetland
- Connecting point
- Pitcher
- Rattling breath
- Cupid's Greek counterpart
- Lairs

For Sale

Large Cooler has compressor needs to be connected
 Make offer
 Piano upright
 Set of dressers mans and woman's
 Smaller dressers and beds
 Call to see
 406 479 1375

KINNEY CLEANING SERVICE



CHIMNEY - VENTS - WINDOWS
 DRYER VENT CLEANING - DUCT CLEANING
 ENJOY CLEANER AIR!
GARY KINNEY
 406-702-5372
 CELL: 406-596-7003
 P.O. BOX 305
 VIRGINIA CITY, MT 59755

HAVE ANY TALENTS YOU'D LIKE TO SHARE WITH THE COMMUNITY?

(Ukulele, drawing, ect)

Opportunities to teach are found within Sheridan's Adult Education.

For more information:

Lindsay Bodda

sheridanadulted@gmail.com

708-743-7999

Riverside Park has an exciting new addition of a kids zip line, thanks to volunteers and the Twin Bridges Park and Recreation District.

Much thanks is due to Roger Hutchinson of Main Street Market and Davey Banks of Banks Industrial Services, LLC for many hours of volunteered time installing the zip line.

We would also like to thank Jeffrey Mills of King's Motel for improvements on the large baseball diamond and installing new boards on the small diamond bleachers that were partially donated by Mountain Building Center.

Thank You FOR ALL YOU DO!

Without the help of community volunteers and donations we wouldn't be able to stretch funds far enough to maintain our beautiful park and continue to make improvements.

So please offer a "thank you" to these volunteers and everyone who helps take care of Riverside Park.

WE ARE HIRING

PART TIME

ALDER EAGLETS
CHILDCARE

- WE ARE OPEN MONDAY-THURSDAY FROM 7:30-5:30.
- FLEXIBLE SCHEDULE
- PAID TRAININGS
- COMPETITIVE PAY
- FUN & FRIENDLY WORK ENVIRONMENT
- GROWTH OPPORTUNITIES

Contact:
 Pam Birkeland
 pbirkeland@madisoncountymt.gov



HUGE SELECTION OF PUZZLES!
New Shipment at BEACON BUSINESS CENTER



Local Artist Stephano Sutherlin
 Wood Art Puzzles,
 Park Puzzles, Contour Puzzles
 & So Much More!

203 S. MAIN - SHERIDAN, MT

SHERIDAN FARMERS MARKET & LIVE MUSIC
 JULY 6th - SEPTEMBER 14th
 EVERY THURSDAY | 5:30PM to 7:30PM
 Main Street Park Sheridan
 Live music, locally grown produce & Montana Made products.
 If you are interested in being a vendor, please contact Janet Marsh at 406-596-1304

Thank you to Jim Kennedy of Trailsend Ranch for his support!

QUIT LINE
 1-800-QUIT-NOW
 Get 8 weeks of FREE patches, gum or lozenges SHIPPED STRAIGHT TO YOUR DOOR!

BANGTAIL CONSTRUCTION
 CUSTOM HOME BUILDERS

We currently have openings for new build clients. Give us a call to discuss how we can make your dream project a reality!
 406-223-5053

Land Stewardship Workshop for Small Acreages
 Tuesday, October 3rd, 2023
 3pm-5pm
 Alder Fire Hall
 28 Judy Lane, Alder, MT, 59749

USDA Natural Resources Conservation Service
 MONTANA STATE UNIVERSITY
 MADISON COUNTY COMMISSION DISTRICT

Please RSVP by taking this survey: <https://tinyurl.com/56yax4eh>
 Or contact us at Sudha@madisoncd.org or (406) 682-3181

Montana Medical Savings Accounts

Contribute up to \$4,500 annually, and enjoy tax savings on your Montana tax return. Federally insured safety!

HighPeaksFCU.com

Sheridan 406-842-5372
 Dillon 406-683-4373

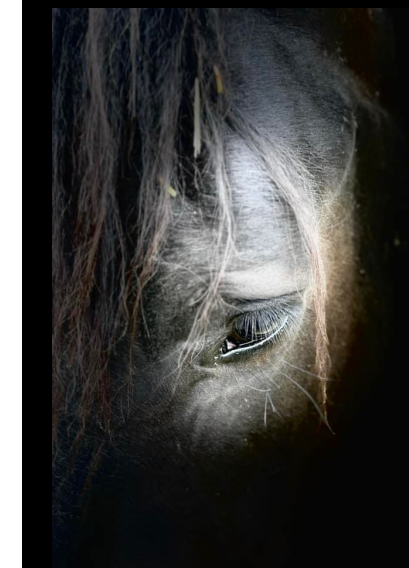


Consult your tax advisor. Federally insured by NCUA.

MONTANA PICTURE GALLERY
 Est. 1864
 Virginia City, Montana

GRAND ART OPENING & CLOSING SEASON LAST HURRAH!

"Outlaws by Day, Angels by Night"



Western and Historical Photography
 By Shiloh Clover
 A.L. Adams

Original Leather Art
 By Rio Milord

Saturday, Sept. 23, 2023
 3-6 pm
 Munchies and Libations!

Montana Picture Gallery
 310 W. Wallace St
 Virginia City, Montana

WORD PUZZLE

Types of Drink

S	C	V	A	O	C	O	C	D	D	Y	P	R	E
Y	E	C	E	P	O	R	C	E	E	I	C	V	F
I	S	P	E	P	F	R	U	C	D	H	E	A	K
V	A	N	I	L	L	A	E	S	E	C	L	T	I
B	D	E	C	I	T	I	M	R	S	O	E	A	A
S	M	H	H	T	E	E	R	E	C	R	M	M	I
O	A	I	O	A	E	Y	Y	B	A	S	O	P	T
U	R	I	L	T	E	A	H	R	N	R	N	E	A
R	E	C	F	K	D	R	E	T	A	T	A	S	S
A	E	O	P	U	N	E	V	E	S	A	D	O	T
O	A	F	D	R	P	E	P	P	E	R	E	D	Y
M	E	F	I	C	A	E	A	H	E	R	B	A	L
A	P	E	S	T	R	A	W	B	E	R	R	Y	P
E	A	E	E	A	E	D	T	O	W	A	T	E	R

- MILK
- PEPSI
- SOUR
- DR PEPPER
- COCOA
- ICED
- LEMONADE
- STRAWBERRY
- CHERRY
- COFFEE
- WATER
- SODA
- HERBAL
- TEA
- TASTY
- SEVEN-UP
- COLA
- HOT
- VANILLA
- DIET

RE/MAX MOUNTAIN PROPERTY

PROPERTIES WANTED!

Residential, River Front Property,
 Farms, Ranches, & Land
 Dillon, Twin Bridges, Silver Star, Whitehall,
 Sheridan, Alder & Virginia City

LIST WITH ME!
 Ann Rhine, REALTOR®
 (406) 920-0263
 arhine.REMAXmtnprop@gmail.com

Serving the...
Ruby, Beaverhead & Jefferson River Valleys!



Ruby Valley Campground & Convenience Store
 In Alder Is Now Open
 • Propane Services
 • Hot Coffee
 • Basic Essentials
 • Fishing Equipment
 • Campsites Available
 8 AM - 7 PM - All Week
 406-842-5677

MOUNTAIN BUILDING CENTER
 TWIN BRIDGES, MT
 406-842-5677

DIAMOND KOTE Building Products
 Rollex
 TRAEGER

Alder Creek Coffee Roasters
 117 North Main Unit D
 Sheridan, MT
 www.aldercreekcoffee.com
 Hours - 7 a.m. to 3 p.m.

Madison Valley BANK
 24 Hour ATM Locations:
 Harrison - Ennis - Virginia City
 Sheridan - Boulder - Montana City
 Bozeman - West Yellowstone
 Ennis | Boulder | Montana City
 Bozeman | West Yellowstone
 www.madisonvalleybank.com

OPEN 7 DAYS A WEEK
 8 A.M. - 9 P.M.
BLUE ANCHOR BAR & GRILL
 DAILY SPECIALS
 NIGHTLY SPECIALS
 TWIN BRIDGES MT.
 406-684-5655
 CONTACT
 596-7636 OR 539-4238



Madison County Nursing Homes Foundation, in support of the Tobacco Root Mountains Care Center in Sheridan and the Madison Valley Manor in Ennis, wishes you health, happiness and peace during this holiday season and throughout the coming year. Thank you for your ongoing support.

Board of Directors

Charity Fechter, President - Melinda Merrill, Vice President
 Joanne Galiger - Mary Ragsdale - Paul Kramer - Paul Marsh
 Sammi Christensen - INA Accounting, Ancillary Services

"How far you go in life depends on your being tender with the young, compassionate with the aged, sympathetic with the striving and tolerant of the weak and strong, because someday in your life you will have been all of these."
 - George Washington Carver

THE FRIENDS OF THE SHERIDAN LIBRARY
 invite you to an
Ice Cream Social
 at the Ken Steiner Memorial Car Show

Saturday, September 9 from 10am to 1pm at the Main St. Park

~\$8- benefiting the Friends of the Library

Featuring Pie & Hand-made Ice Cream from The Virginia City Creamery

100 Kid Cones!

Ruby Valley Food Pantry

Open Saturdays 10-12 am
 206 S. Main Street, Sheridan
 Green building next to the Post Office



Neighbors helping neighbors

Scan the QR Code to donate

TWIN BRIDGES MT FARMER'S MARKET

SATURDAYS, 9AM-1PM
 JUNE - SEPTEMBER
 MAIN STREET CITY PARK

CONTACT
 COREE (406) 596-1978
 JEN (406) 233-9616



The River Road Project with

STEVE ROSE & FRIENDS

A Free Community Concert at Jackson's Garden



10 SEPT 2023

Jackson's Garden
 Musics Starts at 5:30PM
 Bring a picnic & Lawn Chairs



Gary T. Caprara
 DESIGN - INSTALLATION - SALES
 (406) 580-1574 - FAX (406) 458-0138
 lonemountain70@yahoo.com
 www.crestwoodinc.com www.canyoncreek.com

PRAETORIAN

Praetorian Services and Weed Management



Zach Hall
 (406) 596-0245
 praetorian_guard63@yahoo.com

ALLHANDS AUTO CLINIC, LLC

3565 Hwy 287 SHERIDAN, MT 59749
406-842-7155
 FULL SERVICE DIAGNOSTIC AND REPAIR CLINIC
 M-F 7:30AM TO 5:00PM
 ROBERT ALLHANDS, OWNER 406-596-0502
 BRADLEY ALLHANDS, OWNER 406-596-5040

Ruby Valley Sheds

DANIEL & LEONA LEE
 179 JUDY LANE - ALDER, MT
 CELL: 406-217-2131
 HOME: 406-842-5206

SUDOKU PUZZLE

4	6		7				1
				8		3	4
	7				8		
1	2	5					8
6						5	
		1	2		9		
			3	5			
9							3
	1		4				

ANSWERS FROM LAST ISSUE

2	4	9	5	7	3	8	6	1
5	6	7	4	8	1	9	3	2
3	1	8	2	6	9	7	4	5
1	9	5	3	4	7	2	8	6
6	7	3	8	2	5	1	9	4
4	8	2	9	1	6	3	5	7
7	3	4	1	5	8	6	2	9
8	2	1	6	9	4	5	7	3
9	5	6	7	3	2	4	1	8



Dawn Marie Buttrey
 Broker/Owner
 406-600-4802
 ResoluteRoots406@gmail.com



Opportunity Bank OF MONTANA
 OPPORTUNITYBANK.COM



CONSTRUCTION LLC TWIN BRIDGES, MT
406-925-0615
 SPECIALIZING IN NEW HOME CONSTRUCTION AND QUALITY REMODEL AND REPAIR

presented by the Virginia City Preservation Alliance



BREWERY -2- BREWERY AUTO TOUR

Virginia City - Ruby Town - Laurin - Sheridan

Sunday, September 10, 2023 1-6pm

Join us for the 2nd year of fun and history! We've put together a very special tour of historic sites that attendees will drive their own vehicles from location to location.

Registration is limited to first 25 vehicles due to parking restrictions at Robbers Roost. Preregistration is encouraged, day of event registration may not be available (see below for registration information).

TOUR SCHEDULE

12:30pm BREWERY FOLLIES, VIRGINIA CITY
 Gather in the in parking area for the tour

1pm H.S. GILBERT BREWERY, VIRGINIA CITY
 The oldest brewery building in Montana

2pm RUBY TOWN, ALDER
 History of the largest mining operation in Alder Gulch and the former Ruby Town. Tour the historic gold refining building generously being opened to the public by the Gilman family

3:30pm ROBBERS ROOST & LINDERMAN CABIN, LAURIN
 Learn the story of the historic 1863 Daly's Cabin and stage coach stop plus the 1897 Linderman Cabin

5pm RUBY VALLEY BREW (FKA MAVERICK'S BAR) & JENSEN MARKET, SHERIDAN
 Learn about Maverick Mary and her colorful local history

The \$25.00 registration fee per person includes a token for a glass of locally brewed beer at Ruby Valley Brew (must be 21 or older). Since we're limited to 25 vehicles, we're encouraging multiple attendees per vehicle.

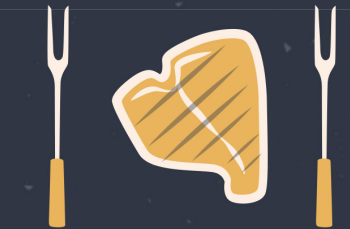
Tickets are available online at www.virginiacitypreservationalliance.com or at the Ruby Valley Brew



Mike & Laura Geary, Owners

270 Tuke Lane - Twin Bridges, Montana
 Office: 406-684-5960
 Mike's Cell: 406-459-2030 Laura's Cell: 406-459-5582
www.hwllodge.com hwllodgent@gmail.com

BITTERROOT SUPPER CLUB PRESENTS



4 COURSE PRIX FIXE POP UP DINNER
FRIDAY, SEPT. 22
5 - 8PM

Quality Food & Wine!

RESERVATIONS HIGHLY RECOMMENDED
 CALL/TEXT CHEF SARAH TO MAKE RESERVATIONS
 406-570-7857

LOCATION:
 Candle Light Cafe, 105 S. Main St, Sheridan MT

Prix Fixe Menu: \$45
 1st Course: Heirloom Tomato Bruchetta on Local Artisan Bread
 2nd Course: Chopped Romaine w/creamy Gorgonzola Dressing
 3rd Course: Beef Tenderloin w/Mash Potatoes & Roasted Zucchini
 4th Course: Lemon Tart
 Wine available by the glass.
 Please note: Menu subject to slight changes.
 Check website for updates.

www.bitterrootsupperclub.com



Meet
Sunny Harmon

THE CABINET STOP
CABINETS & COUNTER TOPS

Locally owned and operated.
 Serving SW Montana.
 Offering free 3D layout and quote.
 No job too big or small!



For more information call
Sunny Harmon at: 406-925-0647
Jordan Harmon at: 406-925-0613
Gary Caprara at: 406-580-1574

**BERKSHIRE
HATHAWAY**
HOMESERVICES

MONTANA
PROPERTIES

Community Events
September 2023

Sun	Mon	Tues	Wed	Thurs	Fri	Sat
					1st	2 Twin Bridges Clinic Fundraiser at The Round Barn - 6pm
3	4	5 Twin Bridges Homecoming Week 5 th -8 th 	6 Twin Bridges Food Pantry 10am-3pm	7 Sheridan Cruise- In on Main <u>6-8pm</u> Sheridan Farmers Market 5:30-7:30pm	8	9 Ken Steiner Memorial Car Show 9am in Sheridan
10 Community Night of Hope-Speaker: Steve Bartkowski @ Mad Cou Fairgrounds 6pm	11	12	13 Twin Bridges Food Pantry 10am-3pm	14 Sheridan Cruise- In on Main <u>6-8pm</u> Sheridan Farmers Market 5:30-7:30pm	15	16
17	18 Sheridan Homecoming Week 18 th -23 rd 	19	20 Twin Bridges Food Pantry 10am-3pm	21 Sheridan Cruise- In on Main <u>6-8pm</u> Sheridan Farmers Market 5:30-7:30pm	22 	23
24	25	26	27 Twin Bridges Food Pantry 10am-3pm	28	29	30



Nicholette Picken
BROKER®
(406)698-0853
nicholette.picken@gmail.com

COMMUNITY NIGHT OF HOPE

“Building Up
The Body Of Believers”
(Hebrews 10:19-25)

With Special Guest Speaker
Steve Bartkowski

Retired NFL Quarterback
1975 First Round Draft Pick



Whitehall
Silver Star
Dillon
Twin Bridges
Sheridan

Ennis
Virginia City
Nevada City
Alder
Laurin

From Football to Faith

Sunday September 10th - 6:00 pm

**Madison County Fairgrounds
Pavilion Building**