

# 1ST ANNUAL Sheridan Days DUCK RACES

**RACE ONE \$100.00 per duck**  
for a chance at a up to \$5,000 dollar pay out.  
Selling 100 ducks

**RACE TWO \$20.00 per duck**  
for a chance at up to \$1,000, \$500 or \$250  
dollar pay out for 1st, 2nd & 3rd places.  
Selling 300 ducks

ALL PROCEEDS WILL GO TOWARDS NEW TOWN PARK EQUIPMENT

LIMITED DUCKS AVAILABLE  
BUY BUY BUY

WHILE WE HAVE THEM!  
**HOW TO GET TICKETS**

Katie Holden, Kaylie Theis, Pete Rossiter,  
Sydney Mailey, Britani Allhands  
Facebook

Front Porch Traditions

Send Checks to SCCF @ P.O. Box 435 Sheridan, MT

RACE 5:00 PM SATURDAY JULY29  
@ RAY SILVE MEMORIAL BASEBALL PARK  
DURING SHERIDAN DAYS

**P's Clothes Closet & More**  
OPEN HOURS  
MONDAY 10AM - 2PM  
WEDNESDAY 9AM - 2PM  
FRIDAY 10AM - 2PM  
SATURDAY 10AM - 2PM

Located above the Twin Bridges Library

ALL items are FREE to the community! Mens, womens, and childrens clothing, toys, household items, sheets, towels, etc. Donations are greatly appreciated and can be dropped off during open hours or by appointment

**RUBY VALLEY BREW**  
REMAIN UNTAMED

WE TIP OUR GLASS TO THE WILDER ONES

111 S. MAIN - SHERIDAN, MT - 842-5977

**HAY GIRL HAY RAFFLE**

2023 SEASON 1ST CUTTING  
4 DRAWINGS OF 5 TON LOTS!

CHECK LOCAL BUSINESSES TO PURCHASE TICKETS AND THE CORNHOLE TOURNAMENT ON APRIL 15TH AT 1 PM

PROCEEDS GO TO TWIN BRIDGES BASEBALL!  
KEEP BASEBALL IN TWIN BRIDGES!

1 ticket \$20  
5 tickets \$70  
10 tickets \$100

Drawing to be held at last home senior game.

TICKETS OR QUESTIONS CALL TRAVIS 546-1479

Check out Twin Bridges Baseball on Facebook for updates

**Resolute Roots REALTY**

Dawn Marie Buttrey  
Broker/Owner  
406-600-4802  
ResoluteRoots406@gmail.com

**KINNEY CLEANING SERVICE**

CHIMNEY - VENTS - WINDOWS  
DRYER VENT CLEANING - DUCT CLEANING  
ENJOY CLEANER AIR!

GARY KINNEY  
406-702-5372  
CELL: 406-596-7003  
P.O. BOX 305  
VIRGINIA CITY, MT 59755

**KENWORTHY ELECTRIC INC.**

P.O. Box 56  
Sheridan, MT.

Dan Kenworthy (406) 842-5865 PH  
Cell: 596-4100 (406) 842-7373 FAX  
kenworthyelectric.com

**PERFORMANCE FAB WORK**  
ANDREW BRAACH

CUSTOM WELDING  
CNC PLASMA CUTTING  
SIGNS  
MOBILE REPAIR  
AUTOMOTIVE REPAIR  
CUSTOMIZATION  
DIFFERENTIAL REBUILD

406-498-0471  
P.O. BOX 393  
TWIN BRIDGES, MT 59754  
PERFORMANCEFABWORK@GMAIL.COM

## RUBY VALLEY NUGGET

# CINCO DE MAYO Festival



FRIDAY MAY 05<sup>TH</sup>, 2023  
6:00 PM  
RAY SILVE MEMORIAL BASEBALL PARK

\*LIVE MUSIC \* TACO & NACHO BAR \* BEER GARDENS \*  
CELEBRATION WITH NEIGHBORS

**LOST CABIN BAR**

109 S. MAIN ST.  
TWIN BRIDGES, MT  
406-684-5482  
COLDEST BEER IN TOWN

Scan Me!

**MADISON COUNTY HEATING & COOLING**  
EST. 2019  
ALDER, MONTANA

Residential & Commercial Heating & Air Conditioning  
406-221-6677

**Banks Industrial Services LLC**

Excavation, Water/Sewer, Hauling, Welding/Portable, Equipment Rentals  
Equipment Repair, Pump Repair, Used Equipment Sales

David Banks  
BISLLC@hotmail.com  
406-596-6049  
406-684-5128

5 Rogers Road Silver Star, MT 59751

**JTS CONSTRUCTION LLC**  
TWIN BRIDGES, MT  
406-925-0615

SPECIALIZING IN NEW HOME CONSTRUCTION AND QUALITY REMODEL AND REPAIR

**THE SHACK**  
TWIN BRIDGES, MONTANA

Pizza..Burritos..Beer..Sandwiches..Burgers..Salad Bar..16 Flavors of Ice Cream

301 N. Main 406-684-5050

WINTER HOURS:  
Tuesdays through Sunday ~ 11 a.m. - 8 p.m.  
Call 406-684-5050 for Daily Specials

**BERKSHIRE HATHAWAY HOMESERVICES** | MONTANA PROPERTIES

MIRANDA WHEELER, REALTOR  
406.640.1655  
miranda.wheeler@bhhsmt.com

**A & E Lawn Care**  
(406) 683 6734  
Lawn maintenance,  
Tree pruning/removal  
Servicing the Dillon, Twin Bridges,  
Sheridan area.

**MOUNTAIN BUILDING CENTER**  
TWIN BRIDGES, MT  
406-684-5567

DIAMOND KOTE Building Products  
TRAEGER Rollex

# PONY MONTANA

A miner by the name of Smith McComsey, nicknamed "Pony" because of his diminutive size, prospected northeast from Alder Gulch. Smith fought in the civil war, he was a private in Company H of the 15th Regiment of the Iowa Volunteer Infantry. He was listed on his military record as a farmer when he enlisted at the age of 18 on Nov. 22, 1861, mustered on Dec. 13, 1861, and was discharged for disability on Dec. 20, 1862 in Yokena, Mississippi. His military record shows him at 5 foot 2-1/2 inches so hence his diminutive size from where his nickname 'Pony' was derived. Mr. McComsey staked a claim on the creek in 1867 and then left for a year and returned in 1868 to continue prospecting his claim where a small mining camp known as Pony Gulch was established. Placers were discovered in the district in the early 1870s and lode mining began in 1874.

About two miles above the present town of Pony, George Moreland located the Crevice and Strawberry lodes, the latter of which lay in a patch of wild berries. The quartz deposit was considered the mother lode of the placer ground of the district. At a depth of fourteen feet Moreland uncovered a lead, ten feet of which contained free gold worth from

\$20.00 to \$100.00 a ton. Several other mines were located in the district and a mill was erected at the Crevice mine. Lode mines would bring a stability to the district that placer camps lacked. The Boss Tweed was located in 1875 by Albert Mason, Thomas Carmin, Alex Lefler, William Robson and Albert Dinnoek. The Clipper was staked out by W.V. Ryan, Jesse Barker, and W. H. Metcalf. The Clipper, Belle and Boss Tweed properties were later known as the Boss Tweed group. The Garnet, Eva May and White Pine mines also became active at this time. The Pony Gold Mining Company was held by such Montana noteworthies as ex-governor Samuel T. Hauser, and Anton M. Holter of Helena. The company bought into several properties owned by Elling and Morris, including the Strawberry, the Boss Tweed, and Clipper. The operation of the mines was then modernized using compressors and air drills. Due to mismanagement, the mines operated under the new company for only a short time.

At one time Pony had a daily train service of its own and was 16 miles distant from two great Transcontinental railroad lines of the Northern Pacific and the Chicago, Milwaukee & Puget Sound Railroad at Sappington junction. Pony had an efficient municipal government, an organized fire department, well kept streets and many public improvements.

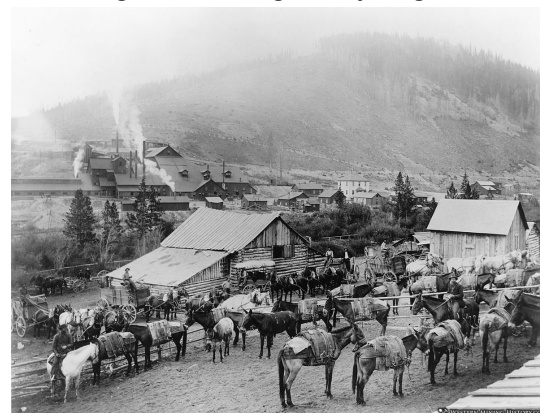
A better location for a permanent town was found between Old Pony and North Willow Creeks and by June of 1876, the new town of Pony was said to have a hotel, blacksmith shop, and several miner's cabins. Spring of 1877 brought a second stampede of miners to the district and by the end of the year five more mills were in operation with a combined total of 56 stamps. Over 1,000 men moved into the district to prospect, mine and work the mills. Sixteen months later the town contained three stores, two blacksmith shops, three hotels, a post office, three saloons, two livery stables and a population of 250 living in 80 houses. By 1895 the town had swollen to a population of about 500 with school enrollment of 108. The cause for the growth can be found in the six quartz mills and a sawmill in its immediate vicinity. The district also raised and expended the largest amount of school money of any district in the county and the largest school fund of that time. It had a high school on the accredited list and graduates were admitted to any of the state colleges or institution with out further examination. The two story brick school had a heating plant and was equipped with laboratories, library and staffed five teachers and one principal. There was also a free public library, three churches each fully owned by Presbyterian, Episcopal and Catholics. A state bank with a capital of \$50,000 occupied a fine brick building of its own and rented portion of it for professional offices. It was fitted with electric lights, steam heat, hot and cold water and all modern conveniences. The citizens Telephone company was a local organization and owned the local exchange in connection with the Rocky Mountain Bell system. They furnished long distance communication in all direction for many ranches and principal mines. The United States Forest Service maintained a line across the range to Sheridan, connecting Potosi Spring Hotel with the Pony exchange. Telegraph service was furnished direct by Northern Pacific Railway company at the Pony Station.

There was a good sized public hall and several orchestra organizations. Business men incorporated and furnished a hotel. Hospital service was operated by a local physician who skillfully provided surgical operations. Pony also boasted two large mercantile stores, several confectionery stores, a drug store, hardware and also a furniture store. There was a weekly newspaper office, a lawyer, a United States Commissioner office, several notaries offices and mining offices. For your traveling needs there was a couple of blacksmiths, wheelwrights, an auto garage, harness store, mining supply store, coal and lumber yard, a liver stable, assay office and chemical laboratory. For your food needs there was a meat market, two restaurants, three thirst parlors and a well equipped creamery. There were two electric power stations for mining operations and one of which furnished electric lights to the town. There were also beautiful houses that dotted around this town. When new strikes were reported in Glendale, Philipsburg and other locations, Pony emptied out almost overnight. By 1878 the population dwindled to a few hundred. A number of historic buildings from Pony's boom era remain in the old town today. Despite the lull in active mining, interest remained high and several large companies bought Pony properties. Henry Elling and William W. Morris, two leading citizens of Virginia City bought the Boss Tweed-Clipper mines in 1880 from which \$5,000,000 was later recovered. In 1882, Morris bought the Strawberry, Willow Creek and Ned mines. In 1883, Henry Elling erected a stone 20-stamp mill. In 1884 Morris bought half interest in the mill, which thereafter was known as the Elling-Morris stone mill. This mill ran to capacity on ore from the Boss Tweed and Keystone mines. No ore which ran less than \$25.00 a ton was handled. The district remained an active mining area until the 1930s. This district, together with Potosi, Mammoth, and Bismark districts a short distance to the south and west, yielded a total of \$6,430,2336, mainly in gold but also in appreciable amounts of silver, copper, and lead. Pony is cared for by the Pony Homecoming Club. The Club was established in 1961 to provide a sense of community for Pony, Harrison, Norris and surrounding areas. They hold annual fundraisers to help in their mission to preserve the historic buildings they are responsible for and to support, enrich and enhance the Pony and surrounding communities. Because of their hard work and dedication visitors can still see a number of historic

building from Pony's boom era and is still a sight to see.



Pony Bank in the early 1900's



Pony in the 1890's

# RUBY VALLEY HAPPENINGS

**ART AT THE LIBRARY - April 14th and 28th and May 12th and 26th at 2:30 pm at the Sheridan Library - See Ad**

**SAVE THE DATE RUBY VALLEY CONSERVATION DISTRICTS ANNUAL BANQUET - April 22nd at the Round Barn in Twin Bridges**

**ELK COUNTRY FUNDRAISER - April 29th - Round Barn - Doors Open at 4 - See Ad for more information**

**CINCO DE MAYO FESTIVAL - May 05th at 6 pm at the Ray Silve Memorial Baseball Park - see ad**

**VIRGINIA CITY CHAMBER'S DINNER AND AUCTION - May 20th - registration at 5:30 - Dinner at 6:30 pm - see ad**

**RUBY VALLEY POOL: Are you or someone you know looking for a summer job? We are accepting applications and holding interviews next week! We offer competitive wages, opportunity for a tan and flexible schedules. Applications can be found on our website [www.rubyvalleypool.com](http://www.rubyvalleypool.com) Please email completed applications to [swimsheridan@gmail.com](mailto:swimsheridan@gmail.com)**

**P'S CLOTHES & MORE: Located above the Twin Bridges Library. Hours: Monday: 10-2 Wednesday: 9-2 Friday: 10-2 Saturday: 10-2 - All items are FREE to the community. Call P at 406-600-2983 to donate or for questions.**

**ZUMBA! 6:30 pm every Monday and Wednesdays above the Twin Bridges Fire Hall in Twin Bridges.**

**LOST CABIN BAR: Monday: Open Pool Table 5-7 - Tuesday: Music Trivia 6:30 - 8 - Wednesday: Whiskey Wednesday (Discount flights and tasters) - Thursday: First Thursday of Month Ladies Night - Friday: Red (Remember Everyone Deployed) Friday. Come in or call for details - Every Monday through Friday Happy Hour 5-6 - Check our FB page for weekend specials @lostcabinbar**

**PUBLIC LIBRARY EVENTS: SHERIDAN - Newspaper History Group - Tuesday mornings @ 9 AM. Knitting Group - Thursdays @ 2 PM. CAREGIVER SUPPORT GROUP - First and third Tuesdays at 6 pm For more information call 406-842-7981.**

**| TWIN BRIDGES - April 23rd-29th is National Library Week. Come to the library that week, fill out a customer satisfaction survey, and be entered in a drawing to win one of five \$20 gift certificates to a local business! News about our summer program will be coming soon, so stay tuned, and celebrate your local library! HYPERTENSION CLINIC - Free blood pressure management workshop - Every Tuesday from March 7th to April 25th from 4-5 pm - Lego club, happening the 3rd Thursday of the month from 3:45-4:30. Need some help in the wait for warmer weather? We have some new to us DVDs of classic movies, and new book releases. There is always a jigsaw puzzle going in the back! Did you know the largest puzzle for sale has 60,000 pieces? Now that's a puzzle! | VIRGINIA CITY - Thompson Hickman - 10:30 a.m. Library Story and craft time.**

**TWIN BRIDGES HELPING HANDS: Twin Bridges-MT Helping Hand Food Pantry, we aim to End Hunger in Montana. We have moved to 208 1/2 S. Main St. Wednesday's. 10am to 3pm. Call for appointment any other day or time. We are here for you Madison County and neighboring towns. Pantry is open every Wednesday 11-2 or call for an appointment. Have on Hand canned fruits, vegetables, soups, sauces, jams, jellies, more. Boxed or bags of rice, beans, dinner helpers, pasta, dry milk, some meat. Toiletries. Adult pads/pull ups. Laundry items. Cleaning supplies. Dog, Cat food and Litter. If you don't see what you would like us to carry, please let us know. 596-1978 & 233-9616**

**RUBY VALLEY FOOD PANTRY: Food is distributed on Saturday mornings from 10-12 @ 206 S. Main in Sheridan, MT -between gas station and post office.**

**3 RIVERS WORSHIP CENTER: Worship is what we are all about and we would love to have you join us. Come as you are and be blessed. Every BSunday @ 10:30 am @ 3648 MT-287. Family friendly. Weekly Grief Support Group - Saturdays at 10 am and Mondays at 6 PM - for more information call 406-381-6677**

**CAREGIVER SUPPORT GROUP: First and third Tuesdays at 6PM at the Sheridan Library - For more information call 406-842-5770**

**If you have a event you would like us to help you promote, please let us know.  
[www.rubyvalleynugget@gmail.com](mailto:www.rubyvalleynugget@gmail.com)**

**EH ENNIS HOME FURNISHINGS**  
 MATTRESSES, APPLIANCES, FURNITURE, ELECTRONICS  
 ennishomefurnishings.com | Office: 406-682-3250 | 120 W Williams St  
 order@ennishomefurnishings.com | Fax: 406-682-3231 | Ennis, MT 59729

FOR ALL YOUR CONSTRUCTION HARDWARE AND FARM RANCH NEEDS!!!!  
**IMOC BUILDING SUPPLIES**  
 SHERIDAN, MONTANA  
 406.842.5643  
 LUMBER - HARDWARE - FEEDS - LAWN/GARDEN - FARM/RANCH  
 WWW.IMOCBUILDINGSUPPLIES.COM

**Trails End Land Company**  
 Jim Kaatz  
 Broker/Owner  
 PO Box 645  
 101 S. Main Street Sheridan, MT 59749  
 Phone: 406-842-5960  
 Cell: 406-596-1060  
 Email: vigilant.jk@gmail.com

**ODYSSEY**  
 DEPENDABLE COMPUTER REPAIR  
 PC, MAC AND SERVER REPAIR,  
 IT SUPPORT, BUSINESS SECURITY AND CAMERAS FOR HOME OR RANCH  
 WWW.COMPUTERSMT.COM  
 (406) 992-4093

MONTANA TOBACCO  
**QUIT LINE**  
 1-800-QUIT-NOW  
 Get 8 weeks of FREE patches, gum or lozenges SHIPPED STRAIGHT TO YOUR DOOR!

**Madison Valley BANK**  
 24 Hour ATM Locations:  
 Harrison • Ennis • Virginia City  
 Sheridan • Boulder • Montana City  
 Bozeman • West Yellowstone  
 Since 1965  
 Ennis | Boulder | Montana City  
 Bozeman | West Yellowstone  
 www.madisonvalleybank.com

**HARSHBARGER LAW FIRM**  
 www.harshbargerlawfirm.com  
 Lori A. Harshbarger, Attorney  
 Kylee Gibson, Attorney  
 Hilary O. Betson, Attorney  
 Tai Goldin, Of Counsel  
 204 S. Main Street  
 P.O. Box 445  
 Twin Bridges, MT 59754  
 Phone: (406) 684-5001  
 Fax: (406) 684-5116  
 2022 has brought some exciting changes to our business! We have relocated our office to Twin Bridges. We look forward to helping you with your legal matters at our new location, by phone or via Zoom.

**ROCKIN S BUSINESS SERVICES LLC**  
 PO Box 156 Sheridan MT 59749  
 406-682-7769 406-842-7778  
 Cell: 406-581-3818 Fax: 406-281-7242  
 Melody@rockinstax.com WWW. Rockinstax.com

**Tobacco Root Mountains Care Center**  
 Phone: (406) 842-5600  
 Fax: (406) 842-5419  
 326 Madison  
 P.O. Box 308  
 Sheridan, MT 59749

**SHERIDAN ELEMENTARY JUMPSTART KINDERGARTEN ROUND-UP**

**May 4<sup>th</sup> at 5:30 pm**  
 In the elementary school lunchroom  
**JUMPSTART KINDERGARTEN**  
 Eligibility Requirements - 4 years old by 9/10/2023  
 \* Two attendance options (choose one)  
 Half Day (8-12:30 pm) or Full Day (8-3:45pm)  
**KINDERGARTEN**  
 Eligibility Requirements - 5 years old by 9/10/2023

- TOUR THE ELEMENTARY SCHOOL
- MEET OUR JUMPSTART KINDERGARTEN TEACHER
- MEET OUR PRINCIPAL
- ENROLLMENT PACKETS AVAILABLE

If you are unable to attend or would like more information, contact the elementary school office 842-5302.



**3 RIVERS COMMUNICATIONS**  
 Internet Phone  
 406-467-2535  
 800-796-4567  
 3rivers.net

Ruby Valley Conservation District's  
**2023 Annual Banquet**  
**April 22nd At The Round Barn Twin Bridges**  
 Live Music From The Ruby Valley Boys and Barbwire!  
 Catering By The Blue Anchor!  
 5 PM Cocktails; 6 PM Dinner; 6:30 PM Raffle Prizes; Dancing to Follow  
 Tickets Are Available If You Search "RVCD Annual Banquet" On EventBrite.com  
 Dinner Tickets \$40; For dancing only, \$10 tickets sold at the door starting at 8 PM.

This Event is Made Possible by Generous Contributions From Our Sponsors:  
 Rubystone Resources, Morse Land Company LLC, PIVOTS PLUS, Sandru Ranch, Opportunity Bank OF MONTANA, RUBY HABITAT FOUNDATION, Sheridan Liquor & Fine Wine, ROWE EXCAVATION, JAL JENSEN TURNER ENTERPRISES, INC., GEM ANGUS, FRONTIER EARTHWORKS, RESOLUTE ROOTS REALTY, NOVICH INSURANCE AGENCY

**Opportunity Bank OF MONTANA**  
 OPPORTUNITYBANK.COM

**NOVICH INSURANCE**  
 novich@montanainurance.net  
 P: (406) 684-5264 / F: (406) 684-5701  
 PO Box 394 / 104 W 4th Ave - Twin Bridges, MT 59754  
 Home - Auto - Farm/Ranch - Business - Work Comp

Add some **COLOR** to life  
**ART at the Library**  
 Second Fridays OPEN STUDIO  
 Bring whatever you're working on - Work and Socialize!  
 2:30 PM  
 Mar 10, 25  
 Apr 14, 28  
 May 12, 26  
 at the Sheridan Library  
 109 E Hamilton St  
 Last Fridays ART CLUB  
 Show-and-Tell, Demo, and Practice - Times!

**HANDYMAN TICE**  
 Corey Theis -720-732-6506  
 PO Box 42 Cptice30@yahoo.com  
 Sheridan, MT 59749 Free Estimates  
 Carpentry, Flooring, Drywall, Sprinkler Systems, Automotive Repair

**LMCH Construction & Building Materials**  
 your home, from the outside in  
 Gary T. Caprara  
 DESIGN - INSTALLATION - SALES  
 (406) 580-1574 - FAX (406) 458-0138  
 lonemountain70@yahoo.com  
 www.crestwoodinc.com www.canyoncreek.com

**HEALING WATERS Lodge**  
 TWIN BRIDGES, MONTANA  
 Mike & Laura Geary, Owners  
 270 Tuke Lane - Twin Bridges, Montana  
 Office: 406-684-5960  
 Mike's Cell: 406-459-2030 Laura's Cell: 406-459-5582  
 www.hwllodge.com hwllodgemt@gmail.com

**ALDER SCHOOL**  
 2023-2024 School Year  
**Running Start Kindergarten & Kindergarten Round-Up!**  
 Thursday, May 4th  
 2:30-3:30 @ Alder School  
 Running Start- must be 4 by Sept. 10th  
 Kindergarten- must be 5 by Sept. 10th  
 \* PLEASE BRING BIRTH CERTIFICATES AND IMMUNIZATION RECORDS.  
 CONTACT:  
 SAVANNAH ROSSITER- (406) 865-0416  
 SKIELA EGGERS- (406) 531-0084



**HOME PARK ASSISTED LIVING**  
504 Ray Lane • Sheridan, MT 59749  
Phone (406) 842-5133 • Fax (406) 842-5651

**EMPLOYMENT OPPORTUNITIES**

**PERSONAL CARE ASSISTANTS WANTED  
(SIGN ON BONUS)**

We are currently seeking compassionate, dedicated and fun-loving individuals to join our team as a full-time and part-time Personal Care Assistant (PCA). We have multiple shifts available for full or part-time work, including daytime, evening, weekday and weekend shifts, with overnight opportunities available. Apply today and pick the schedule that works best for you!

\*We offer a sign-on bonus, competitive wages along with benefits packages for qualifying employees.

\*\*Home Park ALF maintains a drug-free work environment and offers of employment are contingent upon successfully completing and passing a background check.

Please apply at Home Park Assisted Living  
**Call Jason @ 406-980-1117**

**GRIEF SUPPORT GROUP**

Help and encouragement after the death of a spouse, child, family member, or friend.



**WEEKLY GRIEF SUPPORT GROUP**

When: Saturday - 10 AM  
Monday - 6 PM

For Information Contact: 406-381-6677

Where: 3 RIVERS WORSHIP CENTER  
3648 MT HWY 287  
Sheridan, MT 59749



**NOT EVERYONE TRAPPED BY ALCOHOL IS AN ALCOHOLIC**

Families and friends are suffering too.

Do you worry about how much someone drinks?

Al-Anon and Alateen can help.



1-888-4AL-ANON • AL-ANON.ORG

**FIREWOOD BANK OF THE RUBY VALLEY**  
**VOLUNTEERS NEEDED!**  
**HELP OUT YOUR COMMUNITY**



**CUT - SPLIT - STACK FIREWOOD**

FOR MORE INFORMATION CONTACT  
842-7392

**Are you or someone you know looking for a summer job?**

Ruby Valley Swimming Pool is now hiring for the 2023 swim season.  
Must be 15 years old.

We offer competitive wages, opportunity for a tan and flexible schedules.

Applications can be found on our website  
[www.rubyvalleypool.com](http://www.rubyvalleypool.com)

Please email completed applications to  
[swimsheridan@gmail.com](mailto:swimsheridan@gmail.com)

**FULL TIME SUMMER JOB**  
May 20th to October 20th 2023  
**Weed Sprayer/ATV-UTV Mechanic**  
\$16 to \$20 an hour  
depending on experience  
Must pass a drug test and  
be able to drive to Twin Bridges  
To apply please call 406-596-3475

**LAST ISSUE ANSWERS**

L	A	M	B		B	A	D		S	C	U	M		
A	R	E	A		C	O	D	E	C		S	O	R	I
R	U	S	T		R	A	D	A	R		E	M	I	T
D	I	S	T		R	E	S	S	F	U	L	P	A	T
					L	E	A			M	A	L	L	
	B	R	E	A	T	H		O	B	T	A	I	N	
A	L	E		R	E	A	L	M		H	U	M	A	N
P	O	T	S		D	R	A	I	N		D	E	M	O
T	A	I	N		E	N	T	E	R		N	E	T	
T	R	O	O	P	S		S	P	O	R	T	S		
	E	W	E	R				T	W	O				
A	I	M		D	I	S	T	R	U	S	T	F	U	L
U	R	E	A		M	O	R	O	N		A	L	S	O
T	O	N	G		E	D	I	L	E		T	E	E	S
O	N	T	O		A	P	E			E	A	S	E	

**ACROSS**

- Remove, as a hat
- Curve
- Expensive fur
- Type of fruit
- Puncture
- Permit
- Lengthens
- Not tight
- Lawful
- Gangue
- Wailing
- Painkiller
- Consumed
- Consumes
- Ease up
- Explosive
- Shed
- Death notice
- Overact
- Dogfish
- Female chickens
- 18-wheeler
- Divulge
- Paintings
- Pale
- Back up
- Redeemer
- Annoy continually
- A shoulder firearm
- Artificial waterway
- 3-wheeled vehicles
- In the air
- Being
- Eager
- End of life
- Assess
- Rice wine

**CROSSWORD PUZZLE**

1	2	3	4		5	6	7	8		9	10	11	12	13	
14					15					16					
17					18					19					
20						21			22						
			23		24										
25	26	27						28				29	30	31	
32								33				34			
35						36	37					38			
39						40				41	42				
43					44					45					
					46				47						
	48	49									50		51	52	53
54								55			56				
57								58					59		
60										61				62	

**DOWN**

- |                          |                                  |                    |
|--------------------------|----------------------------------|--------------------|
| 1. Competition or combat | 26. Serious                      | 52. Onion relative |
| 2. Look at flirtatiously | 27. Sharp end                    | 53. Slave          |
| 3. Whip                  | 29. Home run (baseball)          | 54. Bounder        |
| 4. Contenders            | 30. Assumed name                 | 56. C              |
| 5. Revelation response   | 31. Not fresh                    |                    |
| 6. Damaged by decay      | 33. Dress                        |                    |
| 7. Not dirty             | 34. Nonconformists               |                    |
| 8. Undecided             | 37. Reverend                     |                    |
| 9. Containing salt       | 42. All                          |                    |
| 10. Beside               | 44. Fortune                      |                    |
| 11. Online journal       | 45. Put up a struggle            |                    |
| 12. Euphemism for death  | 46. Open window problem          |                    |
| 13. Female sheep         | 47. Contrariwise                 |                    |
| 18. Dirty look           | 48. Healthy                      |                    |
| 22. Litterbug            | 49. Dwarf buffalo                |                    |
| 24. Inorganic substances | 51. Wingless bloodsucking insect |                    |
| 25. Hawaiian greeting    |                                  |                    |

# BEACON BUSINESS CENTER

Printing - Copy - Graphic Design - UPS & FedEx Shipping Outlet  
Office Supplies - Puzzles - Toys & More!

LET US DO YOUR PRINTING  
& MAKE IT EASY FOR YOU  
EMAIL US YOUR FILES & WE WILL HAVE IT  
READY WHEN YOU NEED IT

20% off  
All Home Decor  
And Greeting Cards

Scan Me!



BEACON BUSINESS CENTER  
beaconbus@gmail.com - www.beaconbusinessctr.com  
203 S. Main - Sheridan, MT  
406-842-7488

## WORD PUZZLE

### Human Bones

E	L	S	M	R	A	D	I	U	S	I	F	H	Z
S	V	E	A	L	A	Y	C	O	C	Y	X	E	
N	U	P	L	S	T	H	A	M	A	T	E	M	A
S	U	A	L	U	E	I	A	L	R	Z	C	A	T
H	S	T	E	R	M	S	C	L	U	S	T	N	U
A	C	S	U	E	P	C	B	A	M	T	R	D	U
A	L	S	S	M	O	A	T	S	E	A	A	I	A
L	A	T	L	U	R	P	A	R	F	L	P	B	I
L	V	E	L	H	A	H	L	A	A	U	E	L	B
E	I	R	D	E	L	O	I	T	L	S	Z	E	I
T	C	N	U	T	O	I	D	A	U	L	I	T	T
A	L	U	A	R	A	D	P	T	B	M	U	U	S
P	E	M	O	L	L	H	R	E	I	A	M	U	T
E	S	I	S	U	L	N	A	M	F	P	A	E	E

MANDIBLE  
RADIUS  
METATARSAL  
FEMUR  
SCAPHOID  
TALUS  
STAPES  
HAMATE  
TRAPEZIUM  
TIBIA  
PATELLA  
TEMPORAL  
ULNA  
CLAVICLE  
COCCYX  
STERNUM  
MALLEUS  
HUMERUS  
FIBULA

Do you care for someone with dementia, disability or chronic illness?  
*You Are Not Alone!*  
**CAREGIVER SUPPORT GROUP**  
First and Third Tuesdays at 6pm  
at the Sheridan Library  
109 East Hamilton St, Sheridan  
406-842-5770  
The Caregiver Support Group provides emotional, educational and social support for the caregivers, family and friends of individuals with dementia, disability, or chronic illness.

HOME PARK  
ASSISTED LIVING  
842-5133  
homeparkassistedliving.com  
504 RAY LANE  
SHERIDAN, MONTANA

Alder Creek  
Coffee Roasters  
117 North Main Unit D  
Sheridan, MT  
www.aldercreekcoffee.com  
Hours - 7 a.m. to 3 p.m.

Spiffy Biffy Portable Toilets Inc.  
Gary & Heather Caprara  
PHONE: 406-596-0593  
406-580-1574  
spiffybiffyportables@gmail.com

McLeod Mercantile  
"Your locally, family owned fuel distributor"  
2 convenience store locations  
Norris & Sheridan  
Delivering fuel in Madison & Jefferson counties  
Main office: 685-3379  
Sheridan store: 842-5478  
Norris store: 685-3361

## Picturing a new kitchen?



A Home Equity Line of Credit  
is the affordable way to get things done.  
And our friendly team makes it easy.

# HighPeaksFCU.com

Sheridan 406-842-5372 Dillon 406-683-4373



Loans subject to approval. NMLS #695851 Federally insured by NCUA. HPF-0994.1



### Sheridan Schools Needs Your Help!

Do you or anyone you know have the following that you would be willing to rent?

- A current rental property
- Unoccupied property
- Extra room in your home
- A 2nd vacation home in use only part of the year
- Property or housing you'd be willing to donate

Due to teacher shortages it's difficult to find applicants for teaching positions. Lack of available, affordable housing exacerbates this problem. Fortunately we live in a community that comes together to solve problems!

We are asking for help gathering potential housing options for teachers. Even if you have something that would only be available for a portion of the year we would appreciate you reaching out. We are currently in an information gathering phase. Compensation would be offered for lodging and any donations may be tax deductible.

Please call Jason at (406) 596-3119 THANK YOU!

## Ruby Valley Food Pantry

Open Saturdays 10-12 am  
206 S. Main Street, Sheridan  
Green building next to the Post Office

Neighbors helping neighbors



Scan the QR Code to donate

OPEN 7 DAYS A WEEK  
8 A.M. - 9 P.M.  
DAILY SPECIALS  
NIGHTLY SPECIALS  
TWIN BRIDGES MT..  
406-684-5655  
CONTACT  
596-7636 OR 539-4238

You're invited to the  
**Virginia City Chamber's**  
Annual  
**Dinner & Auction**  
Silent Live & Dessert Auction

## Sat, May 20th

Registration at 5:30pm • Dinner at 6:30pm

**Wells Fargo Steakhouse & Eatery**  
**Virginia City**

The Annual Chamber Dinner & Auction is a guaranteed enjoyable evening. The atmosphere created by the fine dinner & the excitement of the auction is one you don't want to miss, so join us and experience one of the best events of the year!

**AUCTION IS OPEN TO THE PUBLIC!**

Dinner reservations open April 20, 2022 and must be paid in ADVANCE of the event.




**Dinner tickets: \$50**

RESERVATIONS FOR DINNER ARE REQUIRED | 8 PEOPLE PER TABLE

An annual fundraiser for the VC Area Chamber of Commerce

FOR DINNER RESERVATIONS, CALL 406-570-0254 OR ONLINE AT WWW.VIRGINIACITY.COM

TWIN BRIDGES PUBLIC SCHOOLS May 2023

Sun	Mon	Tue	Wed	Thu	Fri	Sat
	Staff lunch mtg	1 Noon sophomore class mtg 1pm Top 8 Track Meet (Anaconda) 6pm Booster Club mtg	2 AP Language Test Noon BPA mtg	3 7/8th gr field trip to Hamilton/Big Hole Battlefield Pre-ACT Testing Noon FFA mtg	4 Cinco de Mayo State Music Community Service Day Noon Jr class mtg FFA Taco Cook Out!	5 Festival, Missoula 10am HS track Meet in Missoula MS Track Meet in Deer Lodge
7  Teacher Appreciation May 8 - 12	8 Madison Co. MS Track Meet (Dillon) Noon Exec. Student Co. mtg 5:30pm Travel Group 2023 mtg (library)	9 MS track meet in Anaconda 3/4th gr field trip to Bannack 2nd gr field trip to Raben Ranch Noon Student Council mtg 7pm REG. BOARD MTG (MT rm)	10 Noon 8th gr class mtg	11 5th & 6th gr field trip to Hardin Noon Close-Up mtg 7pm Am Legion mtg (MT rm) 7pm HS Spring Concert (MP gym) 5:30 Travel Group 2025 Mtg (library)	12 District Track in	13 Bozeman (Gallatin HS)
14  Mother's Day	15 8th gr class trip to Yellowstone Noon Sr class mtg 7pm Trailblazers 4-H mtg (lunchrm)	16 Staff lunch mtg	17 1/2/3rd gr field trip to Museum of the Rockies Noon Safety cmtee mtg 3:10pm Falcon Buddies	18 Noon Freshman class mtg 6:30pm Elem./MS Spring Concert	19 Divisional Track	20 In Missoula
21 2pm HS Graduation (main gym)	22 6pm 8th gr Promotion (MP gym)	23	24 10am K-6 Bikes for Books Awards (MP gym)	25 Last Day of School! End 4th qtr/2nd sem	26 State Track Meet	27 in Laurel
28 Memorial Day	29	30	31	 Read This Summer		

print-a-calendar.com

May 2023

Sunday	Monday	Tuesday	Wednesday	Thursday	Friday	Saturday
30	5/1	2 Middle School Track @ Butte - Track @ Anaconda - Top 8 - 12	3 7-12 portfolio day in all classes 10:30a Spanish to Dillon	4	5	6 Middle School Track @ Deer Lc Track @ Dillon TBA 10a Sheridan Bike Rodeo
7	8	9 Board Meeting 7p Sheridan School Board Mee	10	11	12 County Training in the Element	13 Track @ DISTRICT - Galatin HS
14 11:30a Mothers Day	15 AWARDS BANQUET 6 PM - Spr	16 Senior Portfolios Senior Portfolios 8 - 12 PM	17 Senior Portfolios 8 - 12 PM 9a Jr. & Sr. in library	18 JSK - 11 Portfolios	19 Track @ Divisionals - Missoula Big Sky - 10:00 AM	20
21	22 STUDENT COUNCIL CAMPAIGN WEEK	23 Senior Semester Test	24 5-12 Concert - Elem 6PM Senior Semester Test	25 JSK - 4 Elem Concert - Elem 6P Seniors last day	26 Memorial Day Break	27 6:30a Track @ STATE - Laurel - TBA
28 Memorial Day Break Senior Graduation 1:00 PM	29	30 Elementary Fun Day STUDENT COUNCIL ELECTIONS	31 SEMESTER TESTS	6/1 9a Kindergarten Promotion 6:30p 8th grade Promotion	2 HAVE SCHOOL LAST DAY OF SCHOOL	3 Spanish trip

May June

Su	Mo	Tu	We	Th	Fr	Sa	Su	Mo	Tu	We	Th	Fr	Sa
1	2	3	4	5	6		1	2	3	4	5	6	7
7	8	9	10	11	12	13	8	9	10	11	12	13	14
14	15	16	17	18	19	20	15	16	17	18	19	20	21
21	22	23	24	25	26	27	22	23	24	25	26	27	28
28	29	30	31				29	30					

**Ruby Valley Sheds**  
DANIEL & LEONA LEE  
179 JUDY LANE - ALDER, MT  
CELL: 406-217-2131  
HOME: 406-842-5206

**ALLHANDS AUTO CLINIC, LLC**  
3565 Hwy 287  
SHERIDAN, MT 59749  
**406-842-7155**  
FULL SERVICE DIAGNOSTIC AND REPAIR CLINIC  
M-F 7:30AM TO 5:00PM  
ROBERT ALLHANDS, OWNER 406-596-0502  
BRADLEY ALLHANDS, OWNER 406-596-5040

**SPC CONSTRUCTION LLC**  
Sean Phillips, General Contractor  
New Homes, Additions, Log Structures,  
Rustic Styles, Chinking, Consulting  
Home: 406-684-5509 Cell: 406-596-9403

**THE CABINET STOP**  
CABINETS & COUNTER TOPS  
Locally owned and operated.  
Serving SW Montana.  
Offering free 3D layout and quote.  
No job too big or small!

Meet Sunny Harmon

For more information call  
Sunny Harmon at: 406-925-0647  
Jordan Harmon at: 406-925-0615  
Gary Caprara at: 406-580-1574

**Alison's Pantry**  
CAROL & CANDY WILCOX  
819 MIDDLE ROAD  
TWIN BRIDGES, MT 59754  
CAROL - 684-5142  
CANDY - 599-5609

**TB Auto Parts**  
104 N MAIN ST.  
PO BOX 434  
TWIN BRIDGES, MT 59754  
PHONE: 406-684-5739  
FAX: 406-684-5377  
tb\_auto@yahoo.com

**Virginia City Elks Lodge #390**  
**Poker Tourney**  
Saturday, May 6, 2023  
1 PM

Prizes  
1st \$1000 \* 2nd \$550  
3rd \$350 \* 4th \$200  
Prizes based on number of 36 players

Buy in \$125 \* \$3000 in Chips  
Unlimited Rebuys (1st 1.5 hrs) \$50 \* \$3000 in Chips  
Add-on (one time only - end of 3rd round) \$25 \* \$1500 in Chips  
Players must be under \$500 in chips to rebuy.

AT Virginia City Elks Lodge #390

\*\*Door Prizes\*\*  
\*\*Dinner\*\*

**Registration Information**

- \*\*My Business would like to be a Sponsor ... \$100
- \*\*My Business would like to be a Sponsor & Participate as a Player... \$225
- \*\*My Business would like to make a Food/Prize Donation  
Contact Tanya Engle @ 406-660-1559
- \*\*My Business would like to make a Food/Prize Donation & Participate as a Player ...\$125
- \*\*I would like to participate as a Player ...\$125

Based on your selection - Please CALL or TEXT to Register by Midnight May 1st, -- Early registration for drawing for a free entry fee.  
Payment required at the door.  
No credit cards.  
CALL OR TEXT TANYA ENGLE @ 406-660-1559

**BERKSHIRE HATHAWAY**  
HomeServices  
Montana Properties  
Frank Colwell  
Broker  
32 years serving Montana  
Real Estate Needs

**GRAHAM DRILLING**  
SHERIDAN, MT

Water Well Drilling,  
Pump Sales  
Installation, Service & Repairs.  
Phone: (406) 842-5214  
GRAHAMDRILLING.COM

**SUDOKU PUZZLE**

2	4		7			
		7			9 3 2	
	1 8				7	
1						6
6	3	2	1 9 4			
8			3			
3 4		8	2			
2	6					
9		7				

**ANSWERS FROM LAST ISSUE**

9	7	8	1	3	4	6	2	5
1	3	6	8	5	2	7	4	9
4	5	2	9	7	6	1	3	8
6	2	7	4	9	8	3	5	1
8	4	5	7	1	3	9	6	2
3	9	1	2	6	5	8	7	4
7	8	4	3	2	9	5	1	6
2	6	3	5	8	1	4	9	7
5	1	9	6	4	7	2	8	3



## EMERGENCY SERVICES EXERCISE AT SHERIDAN SCHOOL ON MAY 12TH

On May 12th, Madison County Sheriff's Office & Emergency Management will be conducting an emergency exercise in collaboration with numerous emergency personnel. The exercise is designed to test our preparedness and response in the event of an emergency.

During the exercise, you may notice an increased presence of emergency vehicles and personnel in the vicinity of the school.

Please be assured that **this is only a drill** and there is no cause for alarm.

**Please do not call 911.**

We apologize for any inconvenience that this may cause.

Thank you for your cooperation and understanding.

QUESTIONS: JENNIFER MARTENS W/ EMERGENCY MANAGEMENT  
406-970-5950 OR 406-843-4253



BERKSHIRE HATHAWAY  
HomeServices  
Montana Properties

## Community Events

### April/May 2023

Sun	Mon	Tues	Wed	Thurs	Fri	Sat
		<b>April 18<sup>th</sup></b> Music Trivia @ Lu's Lost Cabin Bar in Twin Bridges 7pm Dart night @ RV Brew 6pm	19 Ruby Valley Brew – Trivia Night 6:00pm Twin Bridges Food Pantry 10am-3pm next to Library	20 Vitalant Blood Drive @ TBHS MT Room – 2pm	21 Line Dancing @ the Vault (Lost Cabin) in TB 5:30pm	22 Conservation District Banquet @ Red Round Barn TB – 6pm
23		25 Music Trivia @ Lu's Lost Cabin Bar in Twin Bridges 7pm Dart night @ RV Brew 6pm	26 Ruby Valley Brew – Trivia Night 6:00pm Twin Bridges Food Pantry 10am-3pm next to Library	27 Paint & Sip @ Blue Anchor Bar in TB - 6pm	28 Line Dancing @ the Vault (Lost Cabin) in TB 5:30pm	29 Rocky Mountain Elk Foundation Banquet @ Red Round Barn
30	<b>May 1st</b> 	2 Music Trivia @ Lu's Lost Cabin Bar in Twin Bridges 7pm Dart night @ RV Brew 6pm	3 Ruby Valley Brew – Trivia Night 6:00pm Twin Bridges Food Pantry 10am-3pm next to Library	4 	5 Line Dancing @ the Vault (Lost Cabin) in TB 5:30pm	6 Virginia City Elks Lodge Poker Tournament
7	8	9 Music Trivia @ Lu's Lost Cabin Bar in Twin Bridges 7pm Dart night @ RV Brew 6pm	10 Ruby Valley Brew – Trivia Night 6:00pm Twin Bridges Food Pantry 10am-3pm next to Library	11	12 Line Dancing @ the Vault (Lost Cabin) in TB 5:30pm	13
14	15	16 Music Trivia @ Lu's Lost Cabin Bar in Twin Bridges 7pm Dart night @ RV Brew 6pm	17 Ruby Valley Brew – Trivia Night 6:00pm Twin Bridges Food Pantry 10am-3pm next to Library	18	19 Line Dancing @ the Vault (Lost Cabin) in TB 5:30pm	20



Nicholette Picken  
BROKER®  
406.698.0853  
nicholette.picken@gmail.com