

Vigilante Elk Foundation Big Game Banquet



ELK COUNTRY FUNDRAISER

April 29th, 2023
Doors open at 4:00 PM
at the Round Barn, Twin Bridges

Get your tickets before they sell out!
Contact Leesa at (310) 780-0319
<https://events.rmef.org/shop/vigilante>



OPEN HOURS

MONDAY 10AM - 2PM
WEDNESDAY 9AM - 2PM
FRIDAY 10AM - 2PM
SATURDAY 10AM - 2PM

ALL items are FREE to the community! Mens, womens, and childrens clothing, toys, household items, sheets, towels, etc. Donations are greatly appreciated and can be dropped off during open hours or by appointment by calling P @ (406) 600-2983

Banks Industrial Services LLC

Excavation, Water/Sewer, Hauling, Welding/Portable, Equipment Rentals
Equipment Repair, Pump Repair, Used Equipment Sales

David Banks
BISLLC@hotmail.com 5 Rogers Road Silver Star, MT 59751
406-596-6049
406-684-5128



CONSTRUCTION LLC
TWIN BRIDGES, MT

406-925-0615

SPECIALIZING IN NEW HOME CONSTRUCTION
AND QUALITY REMODEL AND REPAIR



WE TIP OUR GLASS
TO THE WILDER ONES

111 S. MAIN - SHERIDAN, MT - 842-5977



PC, MAC AND SERVER REPAIR,
IT SUPPORT, BUSINESS
SECURITY AND CAMERAS
FOR HOME OR RANCH

WWW.COMPUTERSMT.COM
(406) 992-4093



Dawn Marie Buttrey

Broker/Owner
406-600-4802
ResoluteRoots406@gmail.com



CHIMNEY - VENTS - WINDOWS
DRYER VENT CLEANING - DUCT CLEANING
ENJOY CLEANER AIR!

GARY KINNEY
406-702-5372
CELL: 406-596-7003
P.O. BOX 305
VIRGINIA CITY, MT 59755



Dan Kenworthy (406) 842-5866 PH
Cell: 596-4100 (406) 842-7373 FAX
kenworthyelectric.com



PERFORMANCE FAB
WORX
ANDREW BRAACH

CUSTOM WELDING
CNC PLASMA CUTTING
SIGNS
MOBILE REPAIR
AUTOMOTIVE REPAIR
CUSTOMIZATION
DIFFERENTIAL REBUILD

406-498-0471
P.O. BOX 393
TWIN BRIDGES, MT 59754
PERFORMANCEFABWORX@GMAIL.COM

APRIL 2023 ~ 1ST ISSUE OF THE MONTH

RUBY VALLEY NUGGET

the Elling House
ARTS & HUMANITIES CENTER
presents
Chautauqua



Come to The 2023 Annual Elling House Chautauqua!
A unique American experience.

The Elling House Arts and Humanities Center invites you to attend this year's winter Chautauqua on the third Saturday of April (15th).

The monthly event begins at 6:30pm with a meet and greet. Performances will start at 7:30pm and end at 9:00pm.

Come, enjoy a fun evening of entertainment, intellectual or spiritual growth, and local culture.

We are located at 404 East Idaho Street, Virginia City, Montana.

Participants can present one or two songs, or a 5-minute reading.

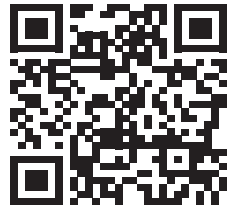
Those wishing to be on stage should contact Toni James at (406) 843-5454 or email ranksmerc@yahoo.com

to reserve their place in the spotlight.



109 S. MAIN ST.
TWIN BRIDGES, MT
406-684-5482
COLDEST BEER IN TOWN

Scan Me!



Residential &
Commercial
Heating &
Air Conditioning

406-221-6677



SATURDAY, APRIL 8, 2023 @ 6 PM
VIRGINIA CITY ELKS LODGE

Bring your friends, family and a cake!

DJ!!! 50/50 raffle!!!

Door prizes, cake auction.
Come support our local fire
department and volunteers

NEED MORE INFO? CALL 843-5454



Internet Phone

406-467-2535
800-796-4567

3rivers.net



Tobacco Root
Mountains Care
Center

Phone: (406) 842-5600
Fax: (406) 842-5419

326 Madison
P.O. Box 308
Sheridan, MT 59749

THE SHACK
TWIN BRIDGES, MONTANA
Pizza..Burritos..Beer..Sandwiches..Burgers..Salad Bar..16 Flavors of Ice Cream

301 N. Main 406-684-5050

WINTER HOURS:
Tuesdays through Sunday ~ 11 a.m. - 8 p.m.
Call 406-684-5050 for Daily Specials

MONTANA PROPERTIES
HOMESERVICES

MIRANDA WHEELER, REALTOR
406.640.1655
miranda.wheeler@bhhsmt.com

ROCKIN S
BUSINESS SERVICES LLC
PO Box 156 Sheridan MT 59749
406-682-7769 406-842-7778
Cell: 406-581-3818 Fax: 406-281-7242
Melody@rockinstax.com WWW. Rockinstax.com

MOUNTAIN BUILDING CENTER
TWIN BRIDGES, MT
406-684-5050

DIAMOND KOTE Building Products
Traeger
Rolltex
Hardwall



PUBLISHED BY BEACON BUSINESS CENTER ~ 406-842-7488

DESIGNED BY JOETTA WETZSTEON - CONTACT: RUBYVALLEYNUGGET@GMAIL.COM - WWW.BEACONBUSINESSCTR.COM

AUTHORIZED FEDEX & UPS SHIPPING CENTER SUPPLIES

HOME DECOR - TOYS - CRAFTS - PUZZLES - OFFICE SUPPLIES - COPY - FAX - GRAPHIC DESIGN - AND MORE..

OLD SHERIDAN HOSPITAL



Dr. John H. Miller, 1898

There is a beautiful fishing lodge, located between Twin Bridges and Sheridan at the end of Tuke Lane, that has gone through many changes since 1893. It started as an idea in the early 1890's that became the local hospital because of the hard work and fundraising efforts from the Sheridan residents. They built it not only to establish a hospital in Sheridan, but to keep a Virginia City practicing Doctor in the area, a Dr. John H. Miller. The Miller family goes back before the Revolutionary War. The Battle of Antietam, as described in "Battles of the Civil War" was fought on the Miller farm. John H. Miller's father graduated from Jefferson Medical College in Philadelphia. Although married three times, he had only one son who he named John Hancock Miller, born in 1869. His mother, the former Anne Leland, died shortly after his birth. His father, also named John Miller, moved the baby and a nurse to Independence, Missouri, where little John was raised by his aunt and older sister. John H. would move later from Missouri to Colorado, always with a nurse and tutor. He graduated from the University of Denver and from there entered the Jefferson Medical College, graduating in 1889. As soon as he received his M. D. degree, he married Sarah Haviland. Her father, Joseph Haviland, was the brother of Theodore Haviland, the china manufacturer in France. John and his father both lived in Helena in the fall of 1889 where they operated a Doctors office in Last

Chance Gulch. The two Dr. Millers, senior and junior, decided to leave Helena and go to Madison County, the elder to Ennis and the younger to Virginia City in the early 1890's. The townspeople of Sheridan saw an opportunity to build a future in healthcare for the area. They asked if Dr. Miller would start a practice in Sheridan, but he refused to stay and practice unless he had a hospital to work in. In 1893 the beautiful state of the art hospital for it's time was finished. It had an official Doctors office, a fully equipped surgery room with a glass top operating table, Oxygen and compressed air equipment installed as well as a hot air apparatus for rheumatism, seven private rooms with enameled iron beds for overnight patients, a kitchen, and a modern functioning bathroom.

After returning from New York City where he had gone to specialize in surgery post graduate-course In the New York Postgraduate college and hospital, John H. Miller was handed the deed to the building. He moved from Virginia City to Sheridan in that year, where he would be nicknamed "Doc" Miller, and practiced medicine until his untimely death, May 21, 1901. at the age of 32.

The red brick hospital structure then passed through a number of private owners, including a term as an antique store, until its was to be moved in the early 1980's. At that time George Cox who was a stonemason and retired Methodist minister bought the building for \$1500. Being a stonemason by trade, Cox understood the value of the bricks used in the old hospital's construction. Shortly after the purchase, a visit from his brother, Jim Cox, would change the future of the old Sheridan Hospital. Jim and his wife, Sarah, had dreamed of living in a refurbished or remodeled old building. George had the answer and sold the structure to Jim. With this sale Jim and George would start the journey from Main Street Sheridan to Tuke Lane.

It would take two days to move it to its present location. The project would start with moving the building off its foundation and the brick and plaster was taken off to prepare for the trip behind a semi down Water Street. "The house was wider than the space between two fences," George Cox was reported saying. They used chain saws to cut the protruding windows on the sides. To top that off, the stop signs had to be taken down at the railroad tracks, again, because the house was too wide. The Mill Creek Bridge at the Four Corners also had was temporarily widened to allow for the semi and cargo to pass. The safe arrival of the structure to its present location was only the beginning of a four and a half year labor of love. George and Jim "worked from a brown grocery sack" to plan the interior. By dropping the ceiling by two feet, laying out the floor plan with 2X4s, and working on it as a fill-in job, George enlisted the help of his entire family, starting with his wife, Doris, to complete the house for Jim and Sarah. That undertaking included moving a total of 84 tons of stone from around the Ruby Valley to finish both the interior and some of the landscaping. The kitchen was then moved separately to join the main structure. A three-story garage was moved from the Rebish Ranch in Dillon. Walnut and cherry plugs for the floor were brought in from Jim and George's childhood farm in Van, Pennsylvania. To add character to the dickering and bartering so much a part of that old building's past, the payments received for helping George Cox move that gutted hospital were 2 weaner pigs and a Hereford heifer. It is now part of a Fishing Lodge and has a name that is perfect for what it once was, Healing Waters.



Old Sheridan Hospital when it sat on Main Street

RUBY VALLEY HAPPENINGS

CAKE WALK - April 8th at 6pm - Virginia City Elks Lodge - call 406-843-5454 for more information or see ad

JVFNRA BANQUET - April 14th - Doors Open at 6 pm - At the Madison County Fairgrounds Pavilion in Twin Bridges, MT - See Ad

ELLING HOUSE: 2023 Annual Eling House Chautauqua - April 15th - 6:30 - For more information call Toni James at 406-843-5454
MONTANA CONVERSATIONS "MONTANA'S POET LAUREATE" WITH MARK GIBBONS - APRIL 21ST AT 7 PM. SEE AD

ART AT THE LIBRARY - April 14th and 28th and May 12th and 26th at 2:30 pm at the Sheridan Library - See Ad

SAVE THE DATE RUBY VALLEY CONSERVATION DISTRICTS ANNUAL BANQUET - April 22nd at the Round Barn in Twin Bridges

ELK COUNTRY FUNDRAISER - April 29th - Round Barn - Doors Open at 4 - See Ad for more information

RUBY VALLEY POOL: Are you or someone you know looking for a summer job? We are accepting applications and holding interviews next week! We offer competitive wages, opportunity for a tan and flexible schedules. Applications can be found on our website www.rubyvalleypool.com Please email completed applications to swimsheridan@gmail.com

EASTER EGG HUNTS - TWIN BRIDGES - APRIL 10TH AT 2 PM AT THE BASEBALL FIELDS - SHERIDAN - Easter Sunday 2-4 pm Library Park

RUBY VALLEY CONSERVATION DISTRICT ANNUAL BANQUET- Saturday April 22nd at the Round Barn.

TWIN SPIRITS YOGA: Yoga schedule for the first week of 2023 - Monday 6:00 P.M. - Tuesday 8:30 A.M. - Thursday 8:30
All levels welcome, bring a friend! Offering pranassage and private classes

P'S CLOTHES & MORE: Located above the Twin Bridges Library. Hours: Monday: 10-2 Wednesday: 9-2 Friday: 10-2 Saturday: 10-2 - All items are FREE to the community. Call P at 406-600-2983 to donate or for questions.

ZUMBA! 6:30 pm every Monday and Wednesdays above the Twin Bridges Fire Hall in Twin Bridges.

LOST CABIN BAR: Monday: Open Pool Table 5-7 - Tuesday: Music Trivia 6:30 - 8 - Wednesday: Whiskey Wednesday (Discount flights and tasters) - Thursday: First Thursday of Month Ladies Night - Friday: Red (Remember Everyone Deployed) Friday. Come in or call for details - Every Monday through Friday Happy Hour 5-6 - Check our FB page for weekend specials @lostcabinbar

PUBLIC LIBRARY EVENTS: SHERIDAN - Newspaper History Group - Tuesday mornings @ 9 AM. Knitting Group - Thursdays @ 2 PM. CAREGIVER SUPPORT GROUP - First and third Tuesdays at 6 pm For more information call 406-842-7981.
| TWIN BRIDGES - March is National Reading month! Join us for some fun by going to readaloud.org and join the 21 day read aloud challenge! Download a chart or pick one up at the library, read aloud 15 minutes every day for 21 days, track it on a chart, and turn it in to the library. The top 4 winners completing the whole 21 days will win a prize! Lego club was well attended, and we look forward to seeing you in March! HYPERTENSION CLINIC - Free blood pressure management workshop - Every Tuesday from March 7th to April 25th from 4-5 pm - Lego club, happening the 3rd Thursday of the month from 3:45-4:30. Need some help in the wait for warmer weather? We have some new to us DVDs of classic movies, and new book releases. There is always a jigsaw puzzle going in the back! Did you know the largest puzzle for sale has 60,000 pieces? Now that's a puzzle! | VIRGINIA CITY - Thompson Hickman - 10:30 a.m. Library Story and craft time.

TWIN BRIDGES HELPING HANDS: Twin Bridges-MT Helping Hand Food Pantry, we aim to End Hunger in Montana. We have moved to 208 1/2 S. Main St. Wednesday's. 10am to 3pm. Call for appointment any other day or time. We are here for you Madison County and neighboring towns. Pantry is open every Wednesday 11-2 or call for an appointment. Have on Hand canned fruits, vegetables, soups, sauces, jams, jellies, more. Boxed or bags of rice, beans, dinner helpers, pasta, dry milk, some meat. Toiletries. Adult pads/pull ups. Laundry items. Cleaning supplies. Dog, Cat food and Litter. If you don't see what you would like us to carry, please let us know. 596-1978 & 233-9616

RUBY VALLEY FOOD PANTRY: Food is distributed on Saturday mornings from 10-12 @ 206 S. Main in Sheridan, MT -between gas station and post office.

3 RIVERS WORSHIP CENTER: Worship is what we are all about and we would love to have you join us. Come as you are and be blessed. Every BSunday @ 10:30 am @ 3648 MT-287. Family friendly. Weekly Grief Support Group - Saturdays at 10 am and Mondays at 6 PM - for more information call 406-381-6677

CAREGIVER SUPPORT GROUP: First and third Tuesdays at 6PM at the Sheridan Library - For more information call 406-842-5770

If you have a event you would like us to help you promote, please let us know.
www.rubyvalleynugget@gmail.com

EH ENNIS HOME FURNISHINGS
 MATTRESSES, APPLIANCES, FURNITURE, ELECTRONICS

ennishomefurnishings.com | Office: 406-882-3250 | 120 W Williams St
 order@ennishomefurnishings.com | Fax: 406-882-3231 | Ennis, MT 59729

FOR ALL YOUR CONSTRUCTION, HARDWARE AND FARM, RANCH NEEDS!!!

IMOC BUILDING SUPPLIES
 SHERIDAN, MONTANA
 406.842.5643

LUMBER - HARDWARE - FEEDS - LAWN/GARDEN - FARM/RANCH
 WWW.IMOCBUILDINGSUPPLIES.COM

Trails End Land Company
 Jim Kaatz
 Broker/Owner
 PO Box 645
 101 S. Main Street Sheridan, MT 59749
 Phone: 406-842-5960
 Cell: 406-596-1060
 Email: vigilant.jk@gmail.com

MONTANA TOBACCO
QUIT LINE
 1-800-QUIT-NOW

Get 8 weeks of FREE patches, gum or lozenges
 SHIPPED STRAIGHT TO YOUR DOOR!

Madison Valley BANK
 24 Hour ATM Locations:
 Harrison • Ennis • Virginia City
 Sheridan • Boulder • Montana City
 Bozeman • West Yellowstone

Since 1965
 Ennis | Boulder | Montana City
 Bozeman | West Yellowstone
 www.madisonvalleybank.com

HARSHBARGER LAW FIRM
 www.harshbargerlawfirm.com

Lori A. Harshbarger, Attorney
 Kylee Gibson, Attorney
 Hilary O. Betson, Attorney
 Tai Goldin, Of Counsel

204 S. Main Street
 P.O. Box 445
 Twin Bridges, MT 59754

Phone: (406) 684-5001
 Fax: (406) 684-5116

2022 has brought some exciting changes to our business! We have relocated our office to Twin Bridges. We look forward to helping you with your legal matters at our new location, by phone or via Zoom.

SAVE THE DATE
 RUBY VALLEY CONSERVATION DISTRICTS

ANNUAL BANQUET
 SATURDAY
 APRIL 22

THE ROUND BARN
 AT
 TWIN BRIDGES

Add some **COLOR** to life

ART at the Library

Second Fridays OPEN STUDIO
 Bring whatever you're working on - Work and Socialize!
 2:30 PM

at the Sheridan Library
 109 E Hamilton St

Last Fridays ART CLUB
 Show-and-Tell, Demo, and Practice Times

VIRGINIA CITY LIP SYNC CONTEST

SATURDAY, APRIL 29 • PIONEER BAR • 8 PM TO 10 PM (OR UNTIL IT'S OVER!)

You're sure to have a super good time performing (or watching) the live show that people are calling "THE EVENT OF THE CENTURY!" and "THE BEST NIGHT OF MY LIFE!" If you don't want to compete, just come cheer on the contestants and vote for your favorite! The more the merrier to get our contestants fired up!

- Contestants may enter as a single person or a duo.
- Come prepared to perform to two songs (we'll have two rounds!).
- Contest entrance fee \$15 solo/\$20 duo (includes spot reservation and audio file).
- First come, first serve! **Only 12 contestants!**
- CASH PRIZE FOR JUDGE'S CHOICE
- JUDGES' CHOICE AND PEOPLE'S CHOICE!

TO REGISTER, CALL: 406-570-0254 OR INFO@VIRGINIACITY.COM

Sponsored by the Virginia City Chamber of Commerce and the Pioneer Bar

HAY GIRL HAY RAFFLE

**2023 SEASON 1ST CUTTING
 4 DRAWINGS OF 5 TON LOTS!**

CHECK LOCAL BUSINESSES TO PURCHASE TICKETS AND THE CORNHOLE TOURNAMENT ON APRIL 15TH AT 1 PM
**PROCEEDS GO TO TWIN BRIDGES BASEBALL!
 KEEP BASEBALL IN TWIN BRIDGES!**

1 ticket \$20
 5 tickets \$70
 10 tickets \$100

TICKETS OR QUESTIONS
CALL TRAVIS 546-1479

Drawing to be held at last home senior game..

Check out Twin Bridges Baseball on Facebook for updates

HANDYMAN TICE

Corey Tice 720-732-6506
 PO Box 42 Cptice30@yahoo.com
 Sheridan MT 59749 Free Estimates

Carpentry, Flooring, Drywall, Sprinkler Systems, Automotive Repair

LMCH Construction & Building Materials
 your home, from the outside in

Gary T. Caprara
 DESIGN - INSTALLATION - SALES
 (406) 580-1574 - FAX (406) 458-0138
 lonemountain70@yahoo.com
 www.crestwoodinc.com www.canyoncreek.com

HEALING WATERS Lodge
 TWIN BRIDGES, MONTANA

Mike & Laura Geary, Owners

270 Tuke Lane - Twin Bridges, Montana
 Office: 406-684-5960
 Mike's Cell: 406-459-2030 Laura's Cell: 406-459-5582
 www.hwllodge.com hwllodgemt@gmail.com

Scan Me!

OPEN 7 DAYS A WEEK
 8 A.M. - 9 P.M.

BLUE ANCHOR BAR & GRILL

DAILY SPECIALS
 NIGHTLY SPECIALS

TWIN BRIDGES MT...
 406-684-5655

CONTACT
 596-7636 OR 539-4238

HOME PARK ASSISTED LIVING
 504 Ray Lane • Sheridan, MT 59749
 Phone (406) 842-5133 • Fax (406) 842-5651

EMPLOYMENT OPPORTUNITIES
PERSONAL CARE ASSISTANTS WANTED
 (SIGN ON BONUS)

We are currently seeking compassionate, dedicated and fun-loving individuals to join our team as a full-time and part-time Personal Care Assistant (PCA). We have multiple shifts available for full or part-time work, including daytime, evening, weekday and weekend shifts, with overnight opportunities available. Apply today and pick the schedule that works best for you!

*We offer a sign-on bonus, competitive wages along with benefits packages for qualifying employees.

**Home Park ALF maintains a drug-free work environment and offers of employment are contingent upon successfully completing and passing a background check.

Please apply at Home Park Assisted Living
Call Jason @ 406-980-1117

GRIEF SUPPORT GROUP

Help and encouragement after the death of a spouse, child, family member, or friend.



WEEKLY GRIEF SUPPORT GROUP

When: Saturday - 10 AM
 Monday - 6 PM

For Information Contact: 406-381-6677

Where: 3 RIVERS WORSHIP CENTER
 3648 MT HWY 287
 Sheridan, MT 59749

NOT EVERYONE TRAPPED BY ALCOHOL IS AN ALCOHOLIC

Families and friends are suffering too.

Do you worry about how much someone drinks?

Al-Anon and Alateen can help.

Al-Anon Family Groups
 Help and hope for families and friends of alcoholics

1-888-4AL-ANON • AL-ANON.ORG

Ruby Valley Food Pantry

Open Saturdays 10-12 am

206 S. Main Street, Sheridan

Green building next to the Post Office



Neighbors helping neighbors

Scan the QR Code to donate

FULL TIME SUMMER JOB
 May 20th to October 20th 2023
Weed Sprayer/ATV-UTV Mechanic
 \$16 to \$20 an hour
 depending on experience
 Must pass a drug test and
 be able to drive to Twin Bridges
 To apply please call 406-596-3475

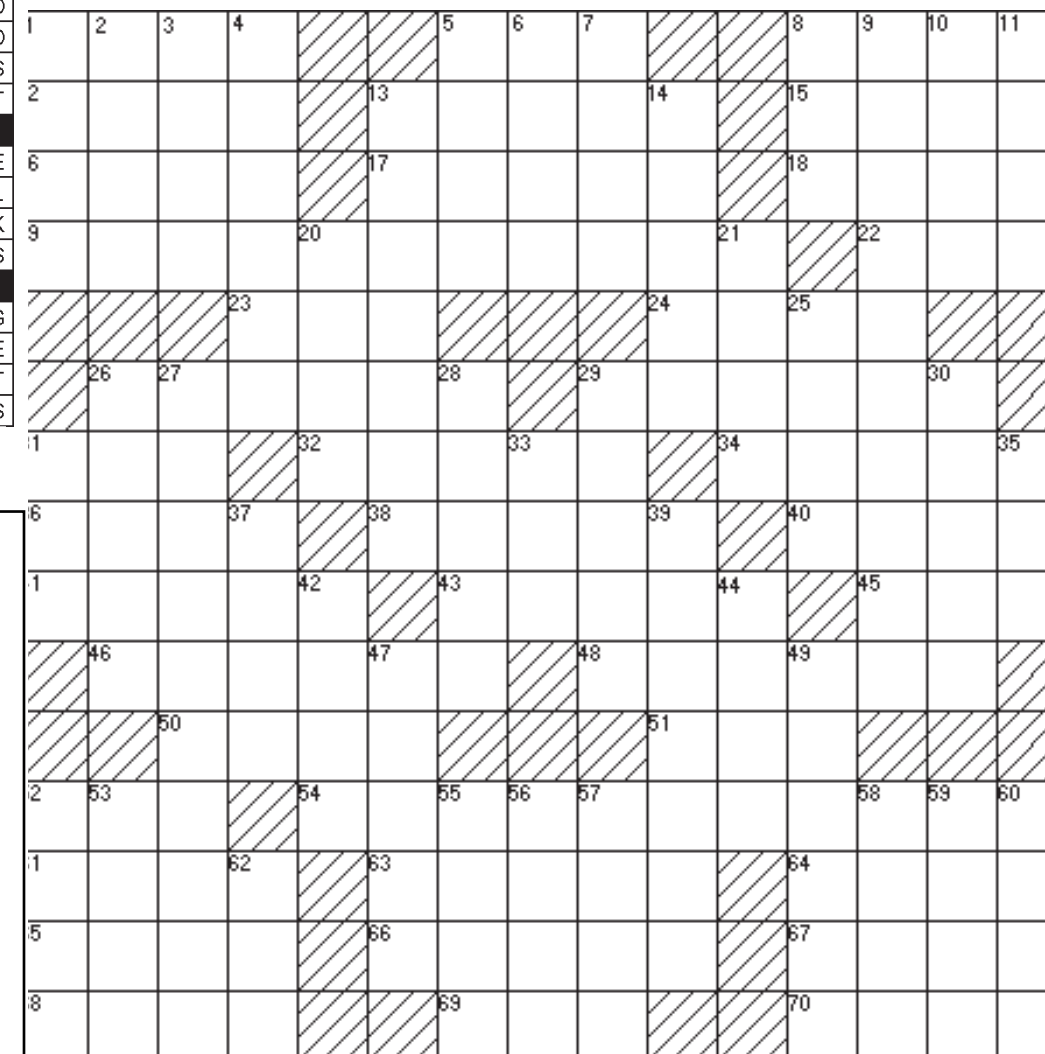
LAST ISSUE ANSWERS

B	L	A	S	T	I	N	N	S	R	E	A	R	
E	A	T	E	R	N	E	A	T	E	R	G	O	
A	D	O	R	E	S	T	I	R	T	O	R	O	
D	E	P	E	N	D	A	B	L	E	I	D	E	S
M	O	S	S	N	I	L	S	E	E				
E	R	N	E	C	A	L	M	E	M	O	T	E	
S	C	A	R	L	E	T	A	R	S	E	N	A	L
H	A	P	P	Y	E	S	S	E	N	E	C	K	
E	R	E	A	T	E	T	S	K	S				
S	C	O	N	E	S	D	I	V	E				
L	O	F	T	C	O	N	C	E	R	N	I	N	G
A	N	T	I	A	R	E	A	A	E	R	I	E	
T	E	E	N	P	A	S	T	S	T	I	N	T	
E	S	N	E	E	L	S	E	E	S	S	E	S	

ACROSS

1. Young sheep
5. Not good
8. Lowlife
12. District
13. Digital compression device
15. Fern clusters
16. Corrode
17. Radiolocation
18. Broadcast
19. Troubling
22. Tap
23. Grassland
24. Shopping center
26. Slight breeze
29. Acquire
31. Beer
32. Domain
34. Not animal
36. Flower holders
38. Exhaust
40. Audition tape
41. Sully
43. Go in
45. Mesh
46. Soldiers
48. Athletic competitions
50. Pitcher
51. One plus one
52. Aspiration
54. Cynical
61. Fertilizer component
63. Fool
64. As well as
65. Chinese dynasty
66. Ancient Roman magistrate
67. T T T
68. Be aware of
69. Type of primate
70. Lack of difficulty
70. Otherwise
71. S S S

CROSSWORD PUZZLE



DOWN

- | | | |
|--------------------|---------------------------|----------------------------------|
| 1. Animal fat | 26. Swell | 53. Weightlifters pump this |
| 2. African sheep | 27. Post-employment years | 55. Fizzy drink |
| 3. Clutter | 28. Rabbits | 56. Voyage |
| 4. Fight | 29. Leaves out | 57. Part portrayed |
| 5. Snakes | 30. What we are called | 58. Wingless bloodsucking insect |
| 6. Combines | 31. Appropriate | 59. Applications |
| 7. Unable to hear | 33. Local Area Network | 60. Fail to win |
| 8. South southeast | 35. Excluding | 62. Earlier |
| 9. Praise | 37. Frozen precipitation | |
| 10. Murres | 39. Most distant planet | |
| 11. Baseball glove | 42. Pigeon-___ | |
| 13. Made | 44. Seating sections | |
| 14. Fragment | 47. Choice | |
| 20. Backside | 49. Spin | |
| 21. Strip of wood | 52. Car | |
| 25. Extol | | |



BEACON BUSINESS CENTER

Printing - Copy - Graphic Design - UPS & FedEx Shipping Outlet
Office Supplies - Puzzles - Toys & More!

LET US DO YOUR PRINTING
& MAKE IT EASY FOR YOU
EMAIL US YOUR FILES & WE WILL HAVE IT
READY WHEN YOU NEED IT

20% off
All Home Decor
And Greeting Cards

Scan Me!



BEACON BUSINESS CENTER
beaconbus@gmail.com - www.beaconbusinessctr.com
203 S. Main - Sheridan, MT
406-842-7488

WORD PUZZLE

Herbs & Spices

G	C	R	R	N	S	A	L	L	S	P	I	C	E
P	A	A	A	S	T	A	R	A	N	I	S	E	T
A	Y	F	E	N	N	E	L	T	I	N	S	R	A
P	E	C	R	G	R	T	E	S	U	M	A	N	R
R	N	L	N	O	C	N	E	I	A	L	E	B	R
I	N	O	L	E	S	I	Y	E	G	L	E	A	A
K	E	V	R	R	M	E	N	O	C	L	T	Y	G
A	P	E	E	L	N	Y	M	N	D	I	L	L	O
C	E	S	G	I	A	U	H	A	A	G	R	E	N
I	P	E	N	S	D	O	T	T	R	M	N	A	I
A	P	E	I	A	G	A	E	M	I	Y	O	F	M
N	E	L	G	B	O	N	A	G	E	R	O	N	U
G	R	U	M	C	N	C	M	S	A	G	E	O	C
R	O	L	Y	I	L	T	U	R	M	E	R	I	C

SALT
GINGER
SAGE
PAPRIKA
OREGANO
ROSEMARY
BASIL
CAYENNE PEPPER
DILL
CUMIN
BAY LEAF
TURMERIC
CLOVES
FENNEL
ALLSPICE
STAR ANISE
TARRAGON
NUTMEG
CINNAMON
THYME

Do you care for someone with dementia, disability or chronic illness?
You Are Not Alone!

CAREGIVER SUPPORT GROUP
First and Third Tuesdays at 6pm
at the Sheridan Library
109 East Hamilton St, Sheridan
406-842-5770

The Caregiver Support Group provides emotional, educational and social support for the caregivers, family and friends of individuals with dementia, disability, or chronic illness.

**HOME PARK
ASSISTED LIVING**

842-5133
homeparkassistedliving.com
504 RAY LANE
SHERIDAN, MONTANA

**Alder Creek
Coffee Roasters**

117 North Main Unit D
Sheridan, MT
www.aldercreekcoffeeco.com
Hours - 7 a.m. to 3 p.m.

McLeod Mercantile

"Your locally, family owned fuel distributor"

2 convenience store locations
Noria & Sheridan
Delivering fuel in Madison & Jefferson counties
Main office: 685-3379
Sheridan store: 842-5478
Norris store: 685-3361

Picturing a new kitchen?



A Home Equity Line of Credit
is the affordable way to get things done.
And our friendly team makes it easy.

HighPeaksFCU.com

Sheridan 406-842-5372 Dillon 406-683-4373



Loans subject to approval. NMLS #695851 Federally insured by NCUA. HPF-0994.1

NOVICH INSURANCE

novich@montanainurance.net
P: (406)684-5264 / F: (406)684-5701
PO Box 394 / 104 W 4th Ave - Twin Bridges, MT 59754
Home - Auto - Farm/Ranch - Business - Work Comp

**Opportunity Bank
OF MONTANA**

FDIC OPPORTUNITYBANK.COM

Spiffy Biffy Portable Toilets Inc.

Gary & Heather Caprara
PHONE: 406-596-0593
406-580-1574
spiffybiffyportables@gmail.com

Ramblin' Rose Drill Team

Recruiting for the 2023 season

Join by May 1, 2023

First practice: April 6

"We strive to teach, promote and encourage good horsemanship and sportsmanship, in and out of the arena."



Dillon, MT

Requirements:

- Open to all ages- parents written consent for riders under 18
- No drill team experience necessary
- Must be able and confident to control your horse at all gaits, and the ability to neck rein
- Must commit to practice every Monday and Thursday from 6:30pm to dark and ALL performances
- No stallions, mules, or ponies
- Must be able to haul to and from practice

B-bending, R-rating, A-accuracy, T-timing, T-teamwork

For more information, please contact:

Lyndee Fogel
(406) 925-1718

Amy Rieber
(720) 530-6994

Kim Guinnane
(406) 925-9955



Your 2022 MTSDTA Champions look forward to seeing you this season!

Virginia City Elks Lodge #390 Poker Tourney

Saturday, May 6, 2023
1 PM

AT
Virginia City
Elks Lodge
#390

Prizes
1st \$1000 * 2nd \$550
3rd \$350 * 4th \$200
Prizes based on
number of 36 players

Door Prizes
Dinner

Buy in \$125 * \$3000 in Chips
Unlimited Rebuys (1st 1.5 hrs) \$50 * \$3000 in Chips
Add-on (one time only - end of 3rd round) \$25 * \$1500 in Chips
Players must be under \$500 in chips to rebuy.

Registration Information

- **My Business would like to be a Sponsor ... \$100
- **My Business would like to be a Sponsor & Participate as a Player... \$225
- **My Business would like to make a Food/Prize Donation
Contact Tanya Engle @ 406-660-1559
- **My Business would like to make a Food/Prize Donation & Participate as a Player ... \$125
- **I would like to participate as a Player ... \$125

Based on your selection - Please CALL or TEXT to Register by Midnight May 1st, -- Early registration for drawing for a free entry fee.
Payment required at the door.
No credit cards.
CALL OR TEXT TANYA ENGLE @ 406-660-1559

Sun	Mon	Tue	Wed	Thu	Fri	Sat
1 						
2	3 Spring Pictures, all classes & organizations & spring sports Staff lunch mtg 6pm Bowhunters Ed classes start	4 SBACTES Noon Sophomore class mtg 6pm Booster club mtg HS Track Meet in East Helena	5 SBACTES Noon BPA mtg	6 Senior Class MS Track Meet at Man. Christian Noon FFA mtg 3:45pm Tech Talk	7 No School - Easter Vacation	8 Idaho Falls 6pm Bowhunters Ed class
9 Easter 	10 No School - Easter Vacation	11 ACT Testing for Juniors Noon Student Council mtg 7pm REG BOARD MTG (MT rm)	12 9am HS Track Meet in Corvallis I Love This Life Assembly Noon 8th gr class mtg	13 Noon Close-Up mtg 3:45pm Tech Talk 7pm Am. Legion mtg (MT rm)	14 9am Child Find Clinic	15 10am HS Track Meet in Belgrade
16 	17 Directed Evacuation Drill Noon Sr. Class mtg 7pm Trailblazers 4-H mtg (Inchrm)	18 SBACTES Staff lunch mtg	19 Noon Safety cmtee mtg Fun Run (track) BPA Wednesday Night Live (MP gym)	20 MS Track Meet (tba) Noon Freshman class mtg 2pm Vitalant Blood Drive (MT rm) 3:45pm Tech Talk FFA Spring Banquet	21 4th qtr mid-term District Music STEM Career Day	22 Earth Day Festival (Anaconda) HS Track Meet in Laurel
23 	24 ASVAB Testing (tentative) Madison Co. MS Track Meet (Dillon)	25 BPA Nation Top 10 Track Meet in Missoula	26 Falcon Buddies 2:10pm	27 MT Tech rep here 3:45pm Tech Talk	28 HS Track Meet in Butte	29
30 BPA Nat'l Convention (Anaheim CA)						

Sheridan School Events March/April 2023

Sun	Mon	Tue	Wed	Thu	Fri	Sat
26	27	28	29	30	31 day	1 April Fool's Day
2	3 Montana State Science Fair	4	5	6	7 Donkey Basketball Elem. Gym - 5 to 10 pm	8 Easter Break
9 Easter Break	10	11 Board Meeting	12	13	14	15
16	17 Missoula Childrens Theater in the Sheridan High School Gym	18 Missoula Childrens Theater in the Sheridan High School Gym	19 Missoula Childrens Theater in the Sheridan High School Gym	20 Missoula Childrens Theater in the Sheridan High School Gym	21 Missoula Childrens Theater in the Sheridan High School Gym	22 Missoula Childrens Theater in the Sheridan High School Gym
23 Close-Up to DC	24 Close-Up to Washington DC	25 Close-Up to Washington DC	26 Close-Up to Washington DC	27 Close-Up to Washington DC	28 Close-Up to Washington DC	29 Close-Up to Washington DC
30						

Ruby Valley Sheds
DANIEL & LEONA LEE
 179 JUDY LANE - ALDER, MT
 CELL: 406-217-2131
 HOME: 406-842-5206

ALLHANDS AUTO CLINIC, LLC
 3565 Hwy 287
 SHERIDAN, MT 59749
406-842-7155
 FULL SERVICE DIAGNOSTIC AND REPAIR CLINIC
 M-F 7:30AM TO 5:00PM
ROBERT ALLHANDS, OWNER 406-596-0502 BRADLEY ALLHANDS, OWNER 406-596-5040

SPC CONSTRUCTION LLC
 Sean Phillips, General Contractor
 New Homes, Additions, Log Structures, Rustic Styles, Chinking, Consulting
 Home: 406-684-5509 Cell: 406-596-9403

THE CABINET STOP
CABINETS & COUNTER TOPS
 Locally owned and operated.
 Serving SW Montana.
 Offering free 3D layout and quote.
 No job too big or small!

Meet **Sunny Harmon**

For more information call
Sunny Harmon at: 406-925-0647
Jordan Harmon at: 406-925-0615
Gary Caprara at: 406-580-1574

Alison's Pantry
CAROL & CANDY WILCOX
 819 MIDDLE ROAD
 TWIN BRIDGES, MT 59754
 CAROL - 684-5142
 CANDY - 599-5609

TB Auto Parts
 104 N MAIN ST.
 PO BOX 434
 TWIN BRIDGES, MT 59754
 PHONE: 406-684-5739
 FAX: 406-684-5377
 tb_auto@yahoo.com

JVFNRA BANQUET
 Sponsored by the Jefferson Valley Friends of NRA
Friday, April 14, 2023
 Doors Open @ 6:00pm at the
Madison County Fairgrounds Pavilion
 Twin Bridges, MT
 Prime Rib Dinner catered by Steve Jenkins
Dinner Tickets \$40.00 or
"Big Shooter Tickets" \$140.00
 (Odds are 1 in 10 you will WIN A GUN!) Fun Game
 Get your tickets early. This Event Sells Out!!!
 Pre-Event Tickets 1 for \$20 or a book of 6 for \$100 (these are not sold at the banquet)
 \$130 worth of Raffle Game Tickets for \$100*
 (limited time offer) Game Called "Locked & Loaded"
 Door Prize, Games, Raffles, Live Auction!
 For Event Tickets & Pre-Event Tickets Contact:
 Ron Howser (406) 565-0099 Patty Howser (406) 490-9738 Bill Gillespie (406) 491-2918
 Farley Hicks (406) 491-6150 Colton Howser (406) 498-4033 Sam Howser (406) 498-3735
 Easton Jones (320) 260-3805 Caine Ciriniconi (406) 792-5627
 Michelle McCormick (307) 431-5968 Wendy Forman (406) 498-7173

BERKSHIRE HATHAWAY
 HomeServices
 Montana Properties
Frank Colwell
 Broker
 32 years serving
 Montana
 Real Estate
 Needs

SUDOKU PUZZLE

					6		
			5	2			9
						3	8
		4	9		3	5	
			7		3		
			2			8	7
		4			9		6
2	3						9
5	9	6	4				8

GRAHAM DRILLING
 SHERIDAN, MT
 Water Well Drilling,
 Pump Sales
 Installation, Service &
 Repairs.
 Phone: (406) 842-5214
 GRAHAMDRILLING.COM

ANSWERS FROM LAST ISSUE

6	2	4	7	5	8	9	1	3
9	3	7	6	2	1	8	4	5
5	1	8	3	9	4	7	6	2
1	9	6	4	3	5	2	8	7
8	5	3	2	1	7	4	9	6
7	4	2	9	8	6	3	5	1
4	7	9	5	6	3	1	2	8
3	8	5	1	4	2	6	7	9
2	6	1	8	7	9	5	3	4

MADISON-JEFFERSON
COUNTY 4-H

CLOVERBUD DAY

For young 4-H members,
Cloverbuds, and interested youth.
Come learn about 4-H
opportunities and projects through
interactive booths and games.



18 USC 707

APRIL 30
1-3 PM
Madison County
Fairgrounds



18 USC 707

Scan the QR Code to RSVP for
snacks and 4-H swag
Contact Abigail Curtis for more
information
mt4habigail@gmail.com



Twin Bridges Baseball

CORNHOLE Tournament

FULLY LOADED TACOS SIXGUN SALLIES COFFEE

\$20 PER TEAM SATURDAY 15 APRIL

All proceeds go to Twin Bridges Summer Baseball League to work on fields, add training equipment & upgrade existing equipment!

**HELP US KEEP BASEBALL IN TWIN BRIDGES
MADISON COUNTY FAIRGROUNDS**
TOURNAMENT STARTS AT 1 PM
OUTSIDE WEATHER PERMITTING OR IN THE JEFFERS BUILDING

RAFFLE TICKETS AVAILABLE FOR PURCHASE FOR \$500 GUN VOUCHER RW OUTDOORS, \$1200 WINSTON FLY ROD WINSTON ROD COMPANY & \$800 TRACER CRILL WALTER'S ACE HARDWARE DRAWING HELD AT LAST SENIOR GAME

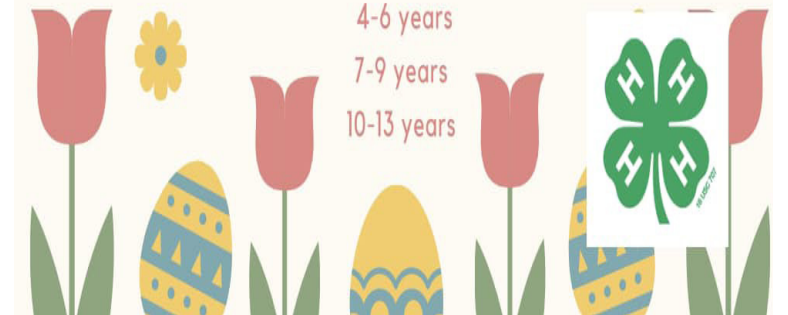
Text or call Jeffrey Mills at 419-606-1421 for early sign up

TRAILBLAZERS, RUBYROOTS, SUPER-STARS AND
STARBUSTERS 4-H CLUBS PRESENT TO YOU...

EASTER EGG HUNT
APRIL 10 ~ 2:00 P.M.
TWIN BRIDGES BASEBALL FIELDS

Celebrate the Easter season
hunting for eggs! Bring your own bags.
It'll be a hopping good time! Age groups:

- 0-3 years
- 4-6 years
- 7-9 years
- 10-13 years



Velma Almont

EASTER FESTIVAL

GAMES, PRIZES, FUN FOR THE WHOLE FAMILY

LIBRARY | EASTER SUNDAY
PARK | 2-4 P.M.

SHERIDAN, MONTANA

**HAVE AN EVENT?
LET US HELP YOU
PUT THE WORD
OUT!**
EMAIL A PDF OR JPG OF
YOUR FLYER OR POSTER
TO PUT INTO THE

RUBY VALLEY NUGGET

→ rubyvalleynugget@gmail.com ←
A design team is on hand to create
event flyer's, posters, invites and more!
Come see us at
203 S. Main in Sheridan, MT
or call 406-842-7488
for more information.

BEACON BUSINESS CENTER
www.beaconbusinessctr.com - beaconbus@gmail.com



BERKSHIRE HATHAWAY
HomeServices
Montana Properties

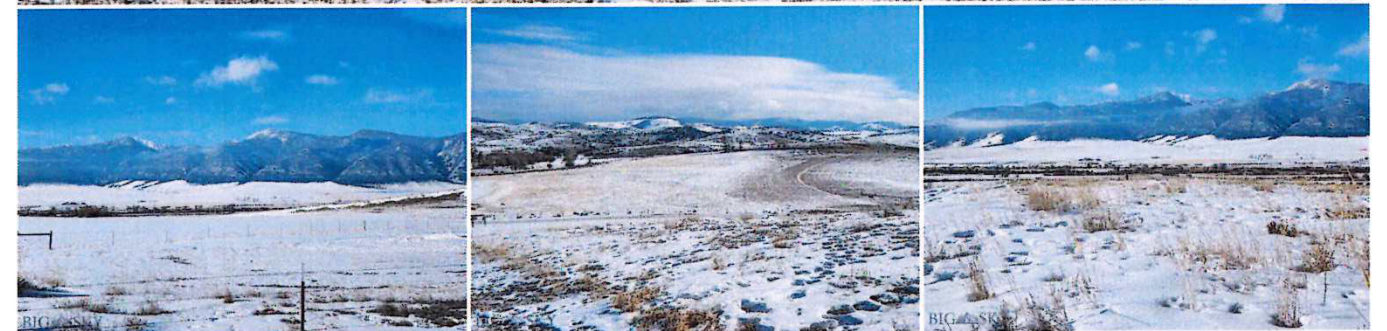
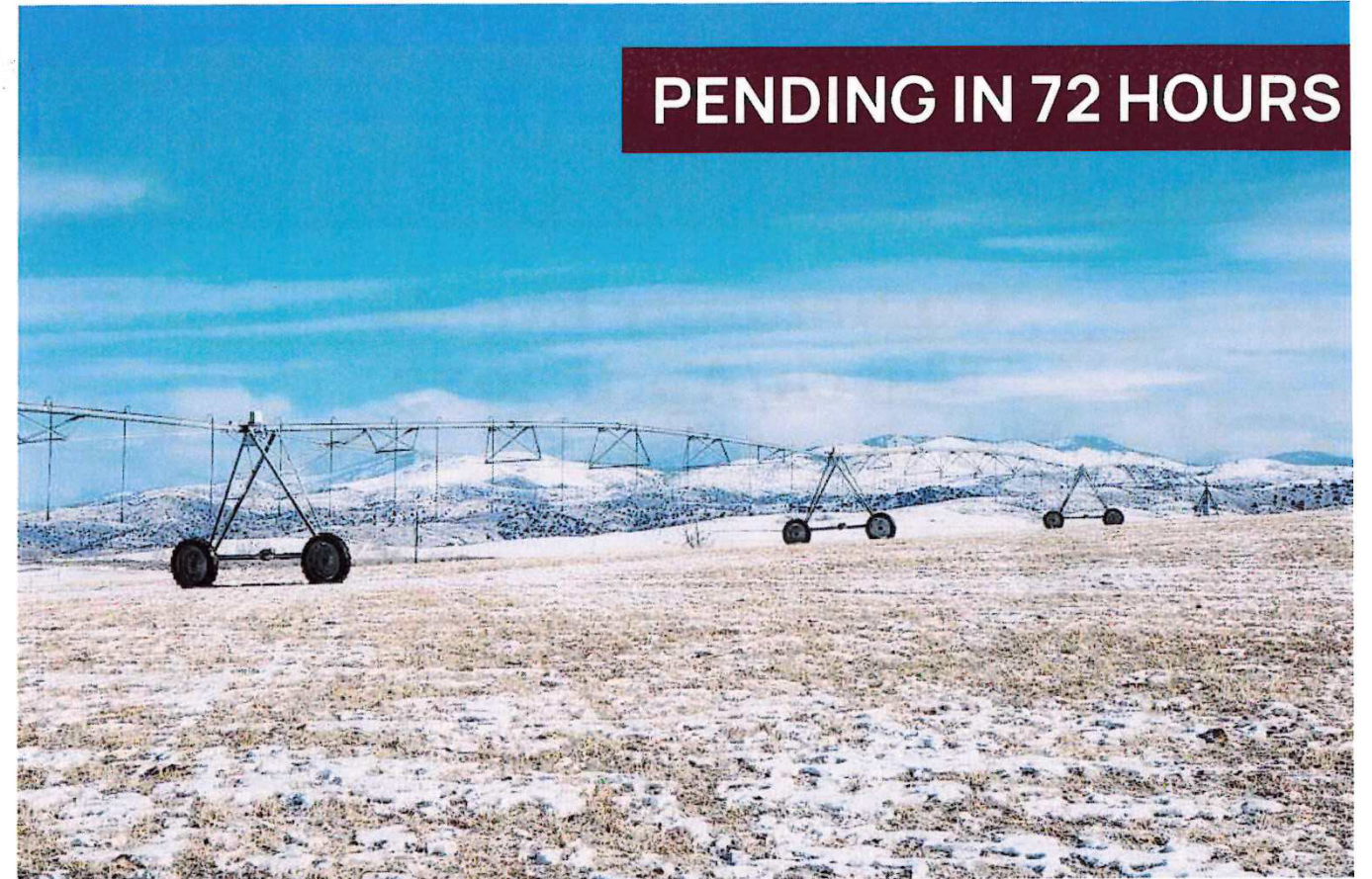
Community Events March/April 2023

Sun	Mon	Tues	Wed	Thurs	Fri	Sat
		MAR 21st Music Trivia @ Lu's Lost Cabin Bar in Twin Bridges 7pm Dart night @ RV Brew 6pm	22 Ruby Valley Brew – Trivia <u>Night 6:00pm</u> Twin Bridges Food Pantry 10am-3pm next to Library	23	24 Line Dancing @ the Vault (Lost Cabin) in TB 5:30pm	25 CASINO NIGHT @ Blue Anchor Bar 6pm
26 Brunch & Bingo @ VC Elks Lodge 10am	27	28 Music Trivia @ Lu's Lost Cabin Bar in Twin Bridges 7pm Dart night @ RV Brew 6pm	29 Ruby Valley Brew – Trivia <u>Night 6:00pm</u> Twin Bridges Food Pantry 10am-3pm next to Library	30	31 Line Dancing @ the Vault (Lost Cabin) in TB 5:30pm	APRIL 1st Spring Art/Craft Fair @ Sheridan Senior Center 9am-3pm
2 	3	4 Music Trivia @ Lu's Lost Cabin Bar in Twin Bridges 7pm Dart night @ RV Brew 6pm	5 Ruby Valley Brew – Trivia <u>Night 6:00pm</u> Twin Bridges Food Pantry 10am-3pm next to Library	6	7 Line Dancing @ the Vault (Lost Cabin) in TB 5:30pm	8
9  Easter Sunday!	10	11 Music Trivia @ Lu's Lost Cabin Bar in Twin Bridges 7pm Dart night @ RV Brew 6pm	12 Ruby Valley Brew – Trivia <u>Night 6:00pm</u> Twin Bridges Food Pantry 10am-3pm next to Library	13	14 Line Dancing @ the Vault (Lost Cabin) in TB 5:30pm	15 Cornhole Tournament Mad Cou Fairgrounds 1pm
16	17	18 Music Trivia @ Lu's Lost Cabin Bar in Twin Bridges 7pm Dart night @ RV Brew 6pm	19 Ruby Valley Brew – Trivia <u>Night 6:00pm</u> Twin Bridges Food Pantry 10am-3pm next to Library	20 Vitalant Blood Drive – MT Room, TBHS @ 2pm	21 Line Dancing @ the Vault (Lost Cabin) in TB 5:30pm	22



Nicholette Picken
BROKER®
406.698.0853
nicholette.picken@gmail.com

PENDING IN 72 HOURS



2700 MT Hwy 287, Sheridan

148.640± ACRES | \$1,495,000

Located approximately 6 miles south of Sheridan and just under 4 miles north of Alder, this 148± acre property lies in the heart of the Ruby Valley and enjoys 360 degrees of picturesque mountain views. The acreage has been historically used for irrigated crop production and pasture. Irrigation water is provided by Ruby River Water Users Association and Vigilante Canal Users Association, 175 acre feet. Three pivots irrigate approximately 131± acres.

**BERKSHIRE
HATHAWAY**
HOMESERVICES
MONTANA PROPERTIES

118 S. Main St. Sheridan, MT 59749
©2023 BHH Affiliates, LLC. Real Estate Brokerage Services are offered through the network member franchisees of BHH Affiliates, LLC. Most franchisees are independently owned and operated. Berkshire Hathaway HomeServices and the Berkshire Hathaway HomeServices symbol are registered service marks of Columbia Insurance Company, a Berkshire Hathaway affiliate. Information not verified or guaranteed. If your property is currently listed with a Broker, this is not intended as a solicitation. Equal Housing Opportunity.



NICHOLETTE PICKEN
Broker
406.698.0853